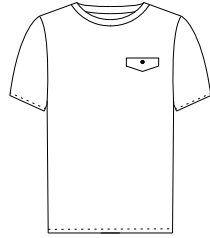
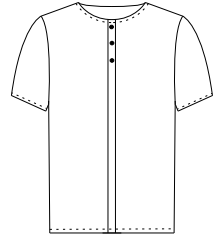


BILLIE



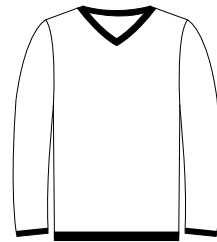
version a



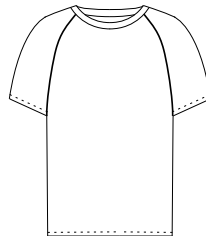
version b



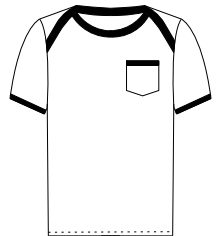
WWW.ZONEN09.COM



version c



version d



version e

BILLIE IN CM

SIZE CHART + WHAT YOU NEED

Fabric width 110 cm / 140 cm

Choose a firm stretch fabric. This is easier to handle.

SIZE	LENGTH	HIP	CHEST	SHORT SLEEVES	LONG SLEEVES
80 – 1y	80 cm	52 cm	52 cm	50 cm / 45 cm	80 cm / 65 cm
86 – 1.5y	86 cm	54 cm	53 cm	50 cm / 45 cm	80 cm / 65 cm
92 – 2y	92 cm	56 cm	54 cm	55 cm / 50 cm	85 cm / 70 cm
98 – 3y	98 cm	58 cm	55 cm	55 cm / 50 cm	85 cm / 70 cm
104 – 4y	104 cm	60 cm	56 cm	65 cm / 55 cm	95 cm / 80 cm
110 – 5y	110 cm	62 cm	58 cm	65 cm / 55 cm	95 cm / 80 cm
116 – 6y	116 cm	64 cm	60 cm	75 cm / 65 cm	105 cm / 90 cm
122 – 7y	122 cm	66 cm	62 cm	75 cm / 65 cm	105 cm / 90 cm
128 – 8y	128 cm	68 cm	64 cm	85 cm / 75 cm	115 cm / 100 cm
134 – 9y	134 cm	70 cm	66 cm	85 cm / 75 cm	115 cm / 100 cm
140 – 10y	140 cm	72 cm	68 cm	85 cm / 75 cm	115 cm / 115 cm
146 – 11y	146 cm	75 cm	70 cm	90 cm / 80 cm	120 cm / 120 cm
152 – 12y	152 cm	78 cm	72 cm	90 cm / 80 cm	125 cm / 125 cm
158 – 13y	158 cm	81 cm	76 cm	95 cm / 80 cm	130 cm / 130 cm
164 – 14y	164 cm	84 cm	80 cm	100 cm / 85 cm	135 cm / 135 cm
170 – 15y	170 cm	87 cm	84 cm	100 cm / 100 cm	140 cm / 140 cm
176 – 16y	176 cm	90 cm	88 cm	110 cm / 110 cm	145 cm / 145 cm

- / Machine needles that are fit for the chosen fabric
- / Coordinating thread
- / Ribbing (finishing option)
- / Elastic bias tape (finishing option)
- / 1 to 4 buttons of 1 to 2 cm diameter (with fake button placket and pocket flap)
- / Elastic piping (optional with raglan sleeves)
- / Stay tape (optional)

BILLIE IN INCHES AND YARDS SIZE CHART + WHAT YOU NEED

Fabric width 43"/55"

Choose a firm stretch fabric. This is easier to handle.

SIZE	LENGTH	HIP	CHEST	SHORT SLEEVES	LONG SLEEVES
80 – 1y	31 ½"	20 ½"	20 ½"	½ yd / ½ yd	¾ yd / ¾ yd
86 – 1.5y	34"	21 ½"	21"	½ yd / ½ yd	¾ yd / ¾ yd
92 – 2y	36"	22"	21 ½"	⅝ yd / ½ yd	1 yd / ¾ yd
98 – 3y	38 ½"	23"	21 ½"	⅝ yd / ½ yd	1 yd / ¾ yd
104 – 4y	41"	23 ½"	22"	¾ yd / ⅝ yd	1 yd / ¾ yd
110 – 5y	43 ½"	24 ½"	23"	¾ yd / ⅝ yd	1 yd / ¾ yd
116 – 6y	45 ½"	25"	23 ½"	¾ yd / ⅝ yd	1 ⅛ yd / 1 yd
122 – 7y	48"	26"	24 ½"	¾ yd / ⅝ yd	1 ⅛ yd / 1 yd
128 – 8y	50 ½"	27"	25"	1 yd / ¾ yd	1 ¼ yd / 1 ⅛ yd
134 – 9y	53"	27 ½"	26"	1 yd / ¾ yd	1 ¼ yd / 1 ⅛ yd
140 – 10y	55"	28 ½"	27"	1 yd / ¾ yd	1 ¼ yd / 1 ¼ yd
146 – 11y	57 ½"	29 ½"	27 ½"	1 yd / ¾ yd	1 ⅜ yd / 1 ⅜ yd
152 – 12y	60"	30 ½"	28 ½"	1 yd / ¾ yd	1 ⅜ yd / 1 ⅜ yd
158 – 13y	62"	32"	30"	1 yd / ¾ yd	1 ½ yd / 1 ½ yd
164 – 14y	64 ½"	33"	31 ½"	1 ⅛ yd / 1 yd	1 ½ yd / 1 ½ yd
170 – 15y	67"	34 ½"	33"	1 ⅛ yd / 1 ⅛ yd	1 ½ yd / 1 ½ yd
176 – 16y	69 ½"	35 ½"	34 ½"	1 ¼ yd / 1 ¼ yd	1 ⅝ yd / 1 ⅝ yd

- / Machine needles that are fit for the chosen fabric
- / Coordinating thread
- / Ribbing (finishing option)
- / Elastic bias tape (finishing option)
- / 1 to 4 buttons of 1 to 2 cm diameter (with fake button placket and pocket flap)
- / Elastic piping (optional with raglan sleeves)
- / Stay tape (optional)