

## Applications

Industrial Machinery  
Robotics  
Commercial Wiring  
Low Voltage Control System  
Solar Industry

## Specifications

### Mechanical

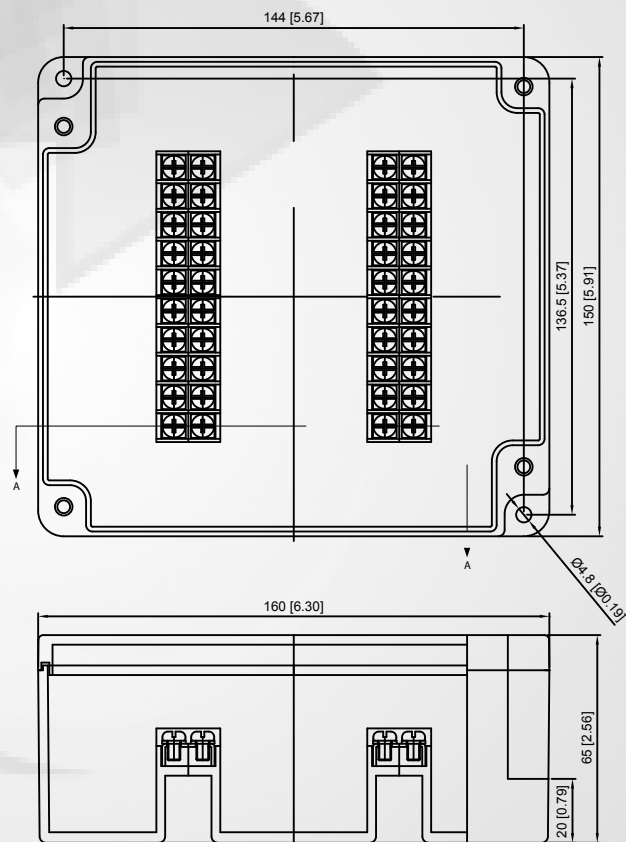
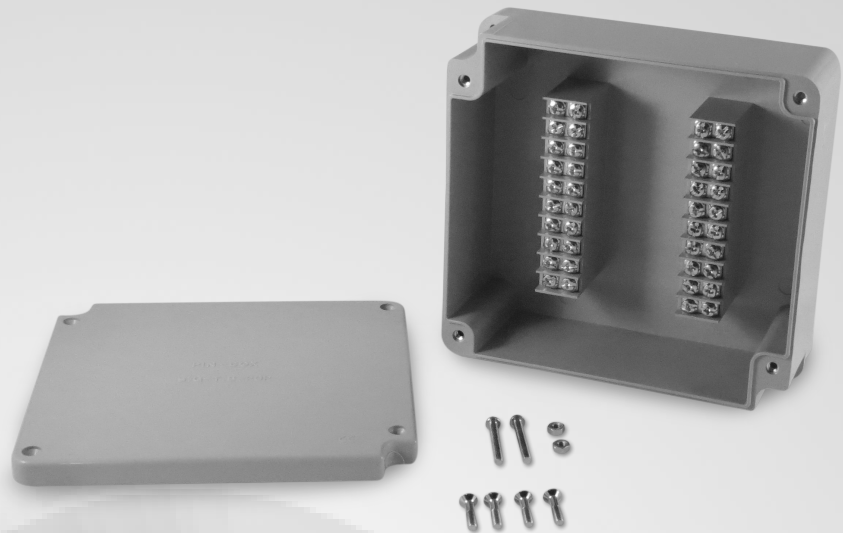
Length: 6.299 in (160 mm)  
Width: 5.905 in (150 mm)  
Height: 2.559 in (65 mm)  
Weight: 1.05 lb (479 g)  
Material: ABS Base & Cover  
Connection Capacity:  
14 - 20 AWG(0.5 - 2.5mm<sup>2</sup>)  
Wire Entry: Center Marks for Drilling  
Entry Opening: 13/16 in (20mm)  
Trade Size: 1/2 NPT  
Neoprene Gasket In Cover  
Mounting Hardware:  
(2) PH - M4 x 30 with Hex Nut

### Electrical

Input Current: 15 Amperes  
Rated Frequency: 60 Hz  
Rated Input Voltage: 120 Volts  
#6 Screw Terminal  
Terminations: 40 / Circuits: 20

### Safety

Certifying Agency: TUV-SUD  
Countries: Canada, USA  
Standards: UL 508A  
Ingress protection: IP65\*  
\*When IP65 or Higher Rated Cable Gland is used



SECTION A - A  
SHOWN WITH COVER

## Compatible Accessory



SG-BB-15 (Blue)