



Use Zone: 113' x 50'



ADA Access: Yes



Age Group: 2-12

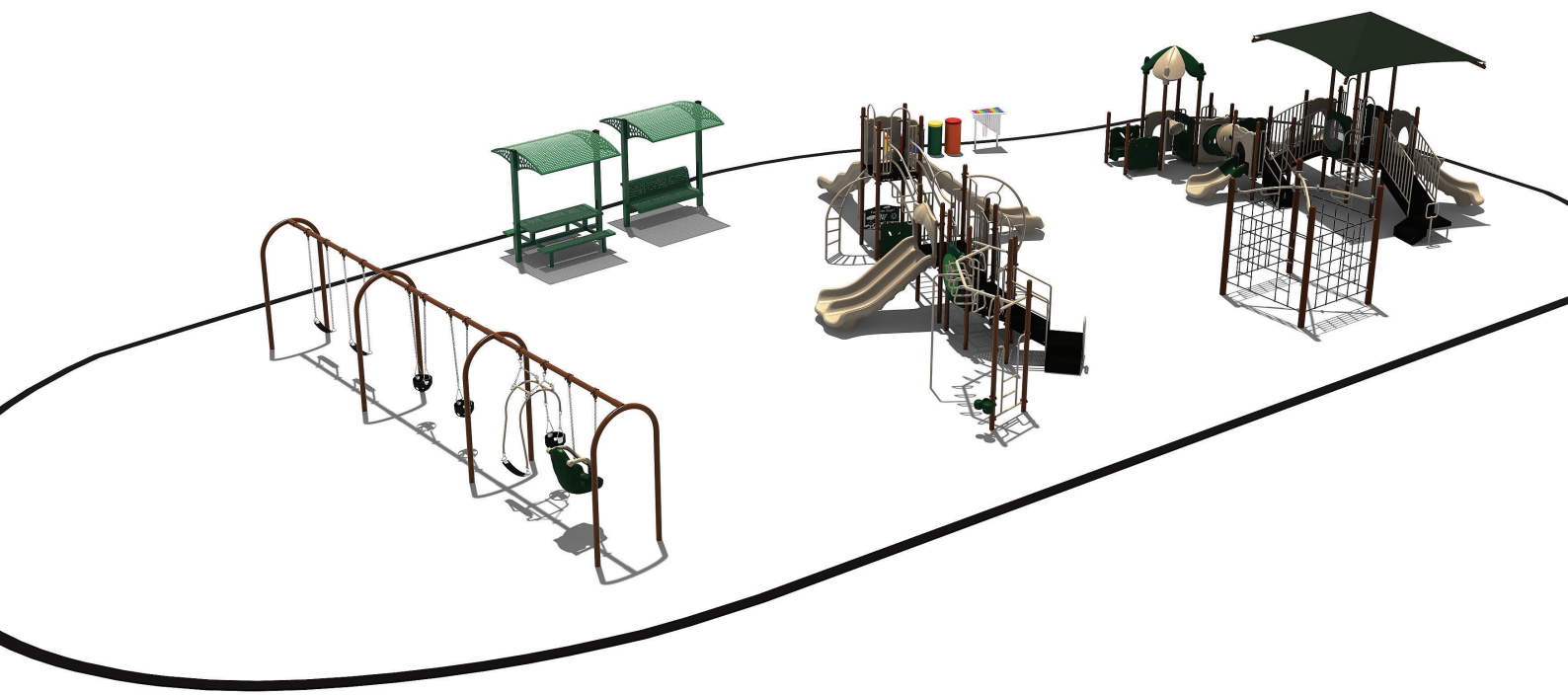


Occupancy: 42-46



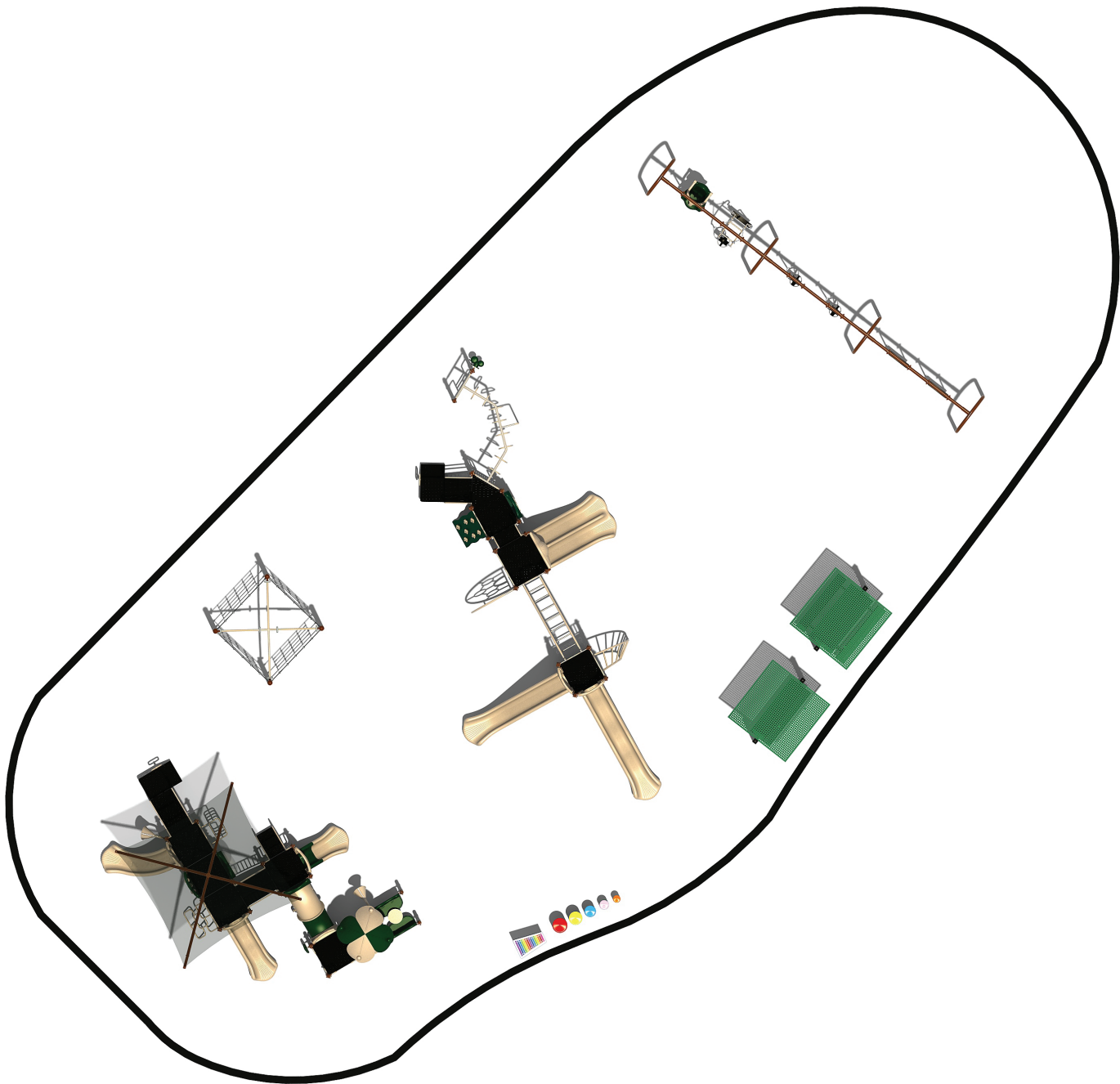
Free Shipping!

COMPONENTS: Transfer Station / Talk Tube / Right Turn Slide / Tic-Tac-Toe Panel / Hopscotch Climber / Wave Slide / Inclined Arch Bridge / Rain Wheel / Store Panel / Four Leaf Roof / Bench Panel / PE Table / Talk Tube / Safety Panel / Inclined Crawl Tunnel / Sectional Straight Slide / Stair / Window Panel / Loop Climber / Shade Roof

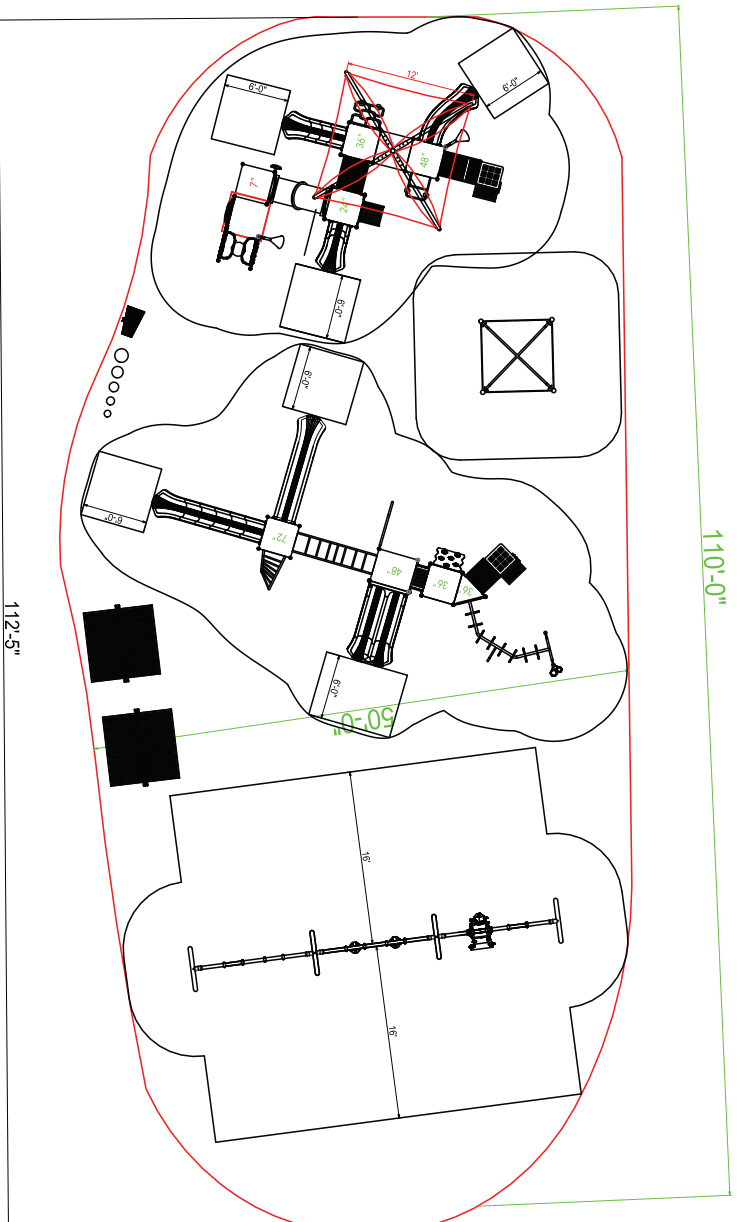








Top View Detail



Compliance:
 This play structure has been designed to meet the safety requirements established in:
 - 2010 ADA Standard
 - ASTM F1487
 - CPSC Pub #325
 when the play structure is installed over a properly maintained surfacing material which is in compliance with:
 - ASTM F1292
 - ASTM F1951
 and is appropriate for the highest designated play surface of the structure.

Drawing No: KP-22021 KP-22027
 ASF-350803 FS-20641
 Date: 01/12/2022
 Scale: To Fit

Structure Size: 21'-8" x 24'-1" x 14'-3"
 Recommended Use Zone: 112'-5" X 50'-0"
 Surface Area: 5650 Sq Ft

HDPG: 4'
 Age Group: 2-5
 Capacity: 42-46
 Weight: 8790 lbs

Creative Recreational Systems, Inc

