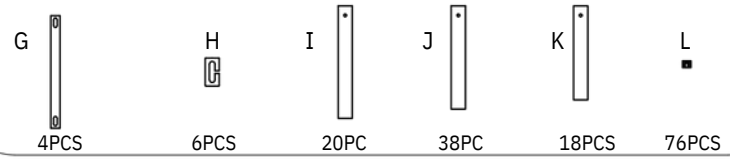
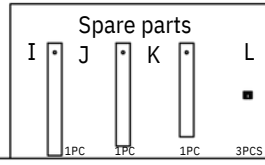
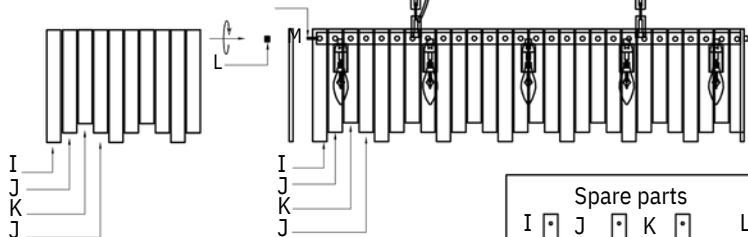
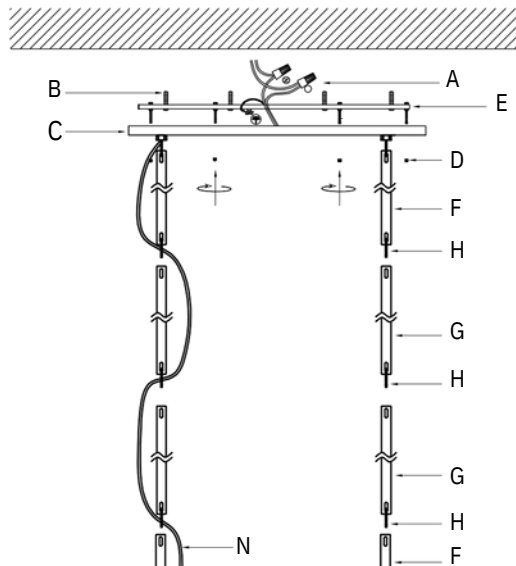




E12

warm light recommended  
Bulb(Not Included)



## Assembly Instructions

WE RECOMMEND INSTALLATION OF THIS LIGHTING FIXTURE BE DONE BY A LICENSED ELECTRICIAN.  
WARNING \*\*\* SWITCH OFF THE MAIN ELECTRICAL SUPPLY FROM THE MAIN FUSE BOX/CIRCUIT BREAKER BEFORE INSTALLATION.

1. Carefully remove all parts from the box
2. Remove the mounting bracket (E) from the rectangular base (C) by loosening the screws (D)
3. According to the height you need and use the part (G) / (H) to link the part (F) and put the cables through the holes on the part (H) till the rectangular base (C) at the same time.
4. INSURE THE ELECTRICITY SUPPLY IS TURNED OFF
5. Affix the mounting bracket (E) on the outlet box with the screws (B)
6. Hold the lamp body and wrap both safety cable with nipples (A), push the cable into the outlet box.
7. Attach the rectangular base (C) to the mounting bracket (B) and secure with screws (D)
8. Install the bulbs (NOT INCLUDING) on the sockets
9. Install the alabaster pieces (I)(J)(K) (NOTE: (I)(J)(K)(J) in a group) group by group in the right places according to the illustration and secure them with screw nuts (L).
10. If the fluorite piece is a little leaned when hanging on the lamp body, please flip the other side and it won't leaned
11. Installation is complete, turn on power at fuse or circuit breaker.

\*\*\*Clean with a dry, soft cloth only. Use no harsh abrasives or chemical agents\*\*\*

