

Improved quality, low cost

Introducing the tec 806-12, which will replace the tec 805-12 glue gun. The new tec 806-12 strikes a similar balance of quality, reliability and affordability as the class-leading 805-12, while boasting some useful additional features. These include a soft-grip handle to improve comfort, a more efficient eco melt chamber design for faster and easier adhesive application, a power cord increased in length from 2m to 3m, and protective mouldings around the on/off switch to prevent accidental operation.

Even easier to use

With an improved heater housing, the tec 806-12 is easier to use for longer. It has been designed to ensure optimum safety and user-comfort with a new soft-feel grip, and features an adjustable trigger, which means that alterations can be made to suit different hand sizes, or to achieve different outputs per trigger pull. It also includes a sturdy base, so it can be stood up between uses with no risk of the glue melting back. Plus, the 806-12 has been modelled with a narrow profile to aid visibility and ensure that adhesive can be accurately applied. It also has an easy-to-clean nozzle shroud, so any dried glue can be wiped off to keep your gun in good condition.

Fast warm-up

The tec 806-12 has a fast heat up time of only 2-3 minutes from cold, so is ready for use almost immediately. It is fitted with an illuminated on/off switch, which now features a new moulding to shield it, preventing it from being turned on or off by accident. The tec 806-12 can also operate on any voltage from 110V to 240V due to its PTC self-regulating heater, offering users even more flexibility. The tec 806-12 meets worldwide electrical standards and is covered by a 12 month warranty.



The soft-grip handle and new heater housing make the tec 806 comfortable to use and easier to operate

Takes the full range of tecbond high performance 12mm (1/2") adhesives

Scan for the tec 806 video!



tec 806

Low cost medium size industrial 12mm (1/2") glue gun, eco melt chamber design for low power consumption, robust & easy to use. Medium output, 3 minute warm-up time & illuminated on/off switch.

Melt rate	1.8kg (4lbs)/hr
Glue size	12mm (1/2") glue stick, or 15mm (5/8") glue stick
Voltage	110-240V
Wattage	25W (250W)
Heater	PTC
Temp Control	Self-regulating heater
Hotmelt gun °C (°F)	195°C (380°F)
Lowmelt gun °C (°F)	N/A
Power cable	3m (10 ft)
Weight	450g (16oz)
Packaging	PET blister (10 per ctn)

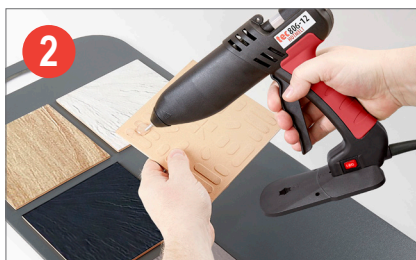
Don't forget!
The tec 805-12 is still available as a low-temperature option (130°C, 265°F), and as a 15mm (5/8") model

Ideal for... a range of industrial applications, from crafting and floristry through to woodworking and product assembly



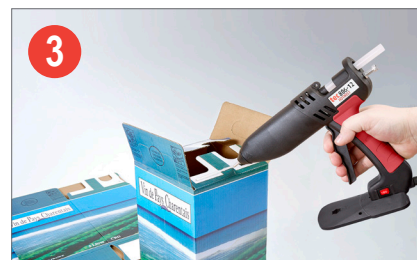
Woodworking

The tec 806-12 can be used for a range of woodworking applications, with a good output and smooth operation.



Product assembly

It is ideal for product assembly too, and the slim profile of the 806 means that the adhesive can be accurately applied.



Packaging

Robust and reliable, the tec 806 is also ideal for a range of carton closing and packaging applications.