

# Tec 3500

Tough, temperature adjustable 43mm applicator

**power**  
adhesives

**Introducing the Tec 3500, 43mm hot melt applicator - the ultimate solution for your high-output, precision bonding needs.**

Replacing the popular Tec 3400, the Tec 3500's internal heater housing has undergone a full reconstruction to make it more energy efficient, with better heat transfer than older-style heater housing, resulting in a faster warm-up. This, in combination with the new improved feed mechanism and metal trigger, speeds up the entire application process and increases overall output compared to the Tec 3400.

Additional improvements to the Tec 3500 include an on/off switch to reduce energy consumption and the risk of glue meltback, and a more comfortable moulded rubber handle to reduce operator fatigue over extended periods of use. An additional wire stand option is available upon request.



## Features and Benefits

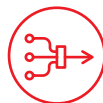
- **New Heater Housing** – Lower mass housing decreases energy waste and increases warm-up speed.
- **Plug-in Modules** – Ensure a more accurate delivery of specific temperatures.
- **Robust Feed Mechanism** – Quicker pick-up and strength resulting in higher adhesive output.
- **On/Off Switch Addition** – Decreases energy consumption and minimizes glue meltback.
- **Improved Rubber Handle** – New handle over-mould for more comfortable grip and easier operation.
- **Tough Metal Trigger** – More robust, shatter-proof trigger, better suited to industrial environments.



**Accurate temperature control**



**More robust design**



**More efficient operation**

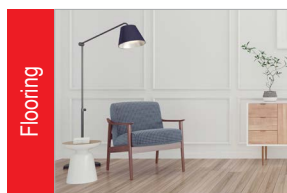


**Better suited to industry**

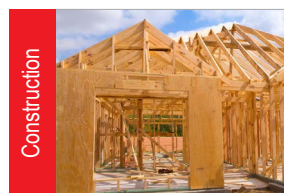
## Tec 3500 markets & applications



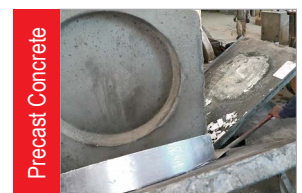
Packaging



Flooring



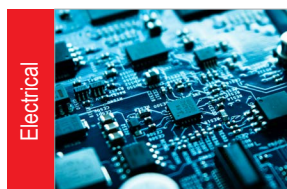
Construction



Precast Concrete



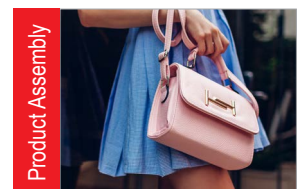
Foundry



Electrical



Woodworking & Carpentry



Product Assembly