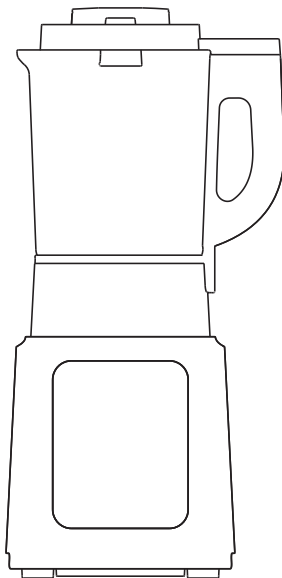


BLENDER



USER MANUAL MJ-PB13E101

CONTENT

IMPORTANT SAFEGUARDS.....	1
Technical Data.....	4
General Description.....	4
Instructions for Use.....	5
Care and Cleaning.....	12
Abnormality Analysis and Handling.....	13

IMPORTANT NOTE: Please read the manual carefully before operating your product. Retain it for future reference.

IMPORTANT SAFEGUARDS

1. Read carefully and save all the instructions provided with this appliance.
2. Always use your appliance from a power outlet of the voltage (A.C. only) marked on the appliance.
3. This appliance is designed for domestic use only.
4. Do not pull on the connection cord, but rather on the plug, to separate the appliance from the mains.
5. Do not use outdoor.
6. Do not leave the appliance unattended when it is switched on, as this may be a source of danger.
7. Stand the appliance on a table or flat surface.
8. If the supply cord is damaged, it must be replaced by the manufacturer, its service agent or similarly qualified persons in order to avoid a hazard.
9. Avoid touching the moving parts.
10. There is a potential injury from misuse. Please handle it with care.
11. Ensure the control dial is in the off '0' position before plugging-in.
12. Always disconnect the appliance from the supply if it is left unattended and before assembling, disassembling or cleaning.
13. Do not use your appliance with an extension

cord unless this cord has been checked and tested by a qualified technician or service person.

14. Do not use an appliance for any purpose other than its intended use.
15. Do not place an appliance on or near a hot gas flame, electric element or on a heated oven. Do not place on top of any other appliance.
16. Do not let the power cord of an appliance hang over the edge of a table or bench top or touch any hot surface.
17. Do not operate any electrical appliance with a damaged cord or after the appliance has been dropped or damaged in any manner.
18. Do not immerse the appliance in water or any other liquid.
19. Be careful when handling the sharp cutting blades, emptying the bowl and during cleaning.
20. If the appliance is overfilled, boiling water may be ejected.
21. This appliance shall not be used by children. Keep the appliance and its cord out of reach of children.
22. This appliance can be used by persons with reduced physical, sensory or mental capabilities or lack of experience and knowledge if they have been given supervision or instruction concerning use of the appliance in a safe way and understand

the hazards involved.

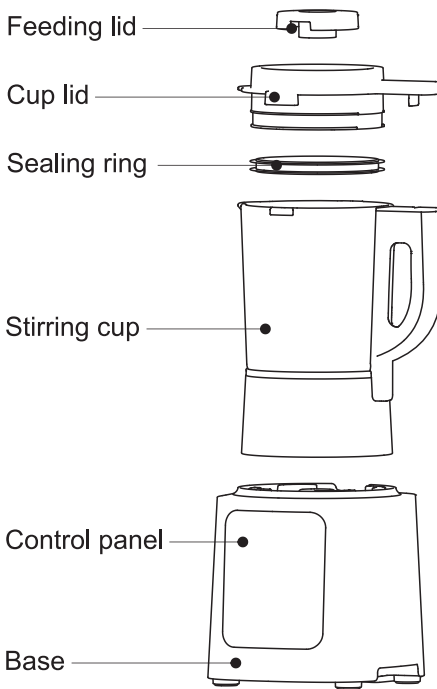
23. Children shall not play with the appliance. Cleaning and user maintenance shall not be made by children without supervision.
24. The appliance is only to be used with the stand provided.
25. Children should be supervised to ensure that they do not play with the appliance.
26. The heating element surface is subject to residual heat after use.
27. Household use only.
28. Switch off the appliance and disconnect from supply before changing accessories or approaching parts that move in use.
29. Be careful if hot liquid is poured into the food processor or blender as it can be ejected out of the appliance due to a sudden steaming.
30. Avoid spillage on the connector.

SAVE THESE INSTRUCTIONS

TECHNICAL DATA

Product name	Model	Voltage	Frequency	Heating power	Blender Rated Power
Blender	MJ-PB13E101	220-240V~	50Hz	800W	1000W

GENERAL DESCRIPTION



Accessories:



Measuring cup



Grinder(Optional, purchased separately)

The above figure is the product diagram for reference purpose. Please refer to the actual product in the packaging.

Instructions for Use

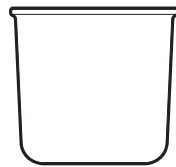
Cautions before use

- This product is best worked below 2,000 meters above sea level, used at higher altitude may cause uncooked food, overflow and food burnt issues.
- Before turning on the power, make sure that the mixing cup, cup lid, and feeding lid are installed in place. If the soft rubber coaster on the main unit is warped, please flatten it before use.
- When the appliance is powered up, it is strictly forbidden to reach hands or sharp hard objects into the stirring cup to avoid injury or damage to the appliance.
- Please put food into the cup before starting. Never start working without food in it.
- When cleaning, please rinse the inside of the stirring cup with water and wipe dry; the blade is very sharp, please be careful when leaning to avoid injury.
- The outer case may be cleaned with a wringed cloth. To prevent leakage or damage to the equipment, do not immerse the machine into water or other liquids, do not wash directly under running water or other liquids.
- Do not use abrasive detergents or corrosive liquids (such as gasoline or acetone) to clean products.
- When using the non-warming functions, you may open the feeding lid to add the materials or ingredients during the operation (Strictly do not open the feeding lid when using warming functions to prevent from burning).
- The ingredients need to be pitted for making fruit and vegetable drinks.
- Before making food, wash the ingredients and cut them into pieces with a side length of no more than 5cm.
- It is forbidden to whip or grind dry goods and hard Chinese medicinal herbs (such as stone swallows, stone lotus seeds, stone magnets, etc.).
- Do not put ingredients and liquids above 80°C for whipping.
- The amount of ingredients in the recipe is prepared according to the standard water level, so users should also adjust the total amount of ingredients based on the amount of water and food types. The amount should not exceed 1,400mL when heating (the maximum capacity of soybean milk and rice cereal should not exceed 1,200mL), and that should be no more than 1,750mL for cold drinks, otherwise it will lead to overflow or burnt cooker.
- Do not use this appliance to directly heat milk, soy milk, cold rice paste and other viscous liquids; otherwise it will cause “burnt cooker” and other burning situations, resulting in odour.
- To make porridge, paste, soup, etc., you must select the corresponding buttons, otherwise they may taste bad or be undercooked, which will even cause overflow or burnt cooker in severe cases.
- In order to ensure food grinding effect and taste (dry corn, red bean, mung bean, barley and other dry led ingredients) when using porridge and paste function, please use hot water to soak for 4 hours before mixing.
- Do not add seasonings like granulated sugar and brown sugar to the cup during the preparation, in order to prevent the seasonings from sticking to the bottom of the stirring cup when heated.
- While making heated food, please do not put rags, sealing covers etc., on the lid of the cup to prevent overflow due to difficulties in steam exhaustion. Moreover, please be careful of the vapor and hot water splashed once the liquid in the mixing cup boils.

- When the food boils after heating for a while (the countdown starts), do not terminate the program. If the operation is terminated by mistake, do not select the heating function again so as to avoid overflow / burnt cooker due to repeated boiling of hot food. Please change the ingredients and select functions, or use the pot to cook and then use the custom mode to break the food.

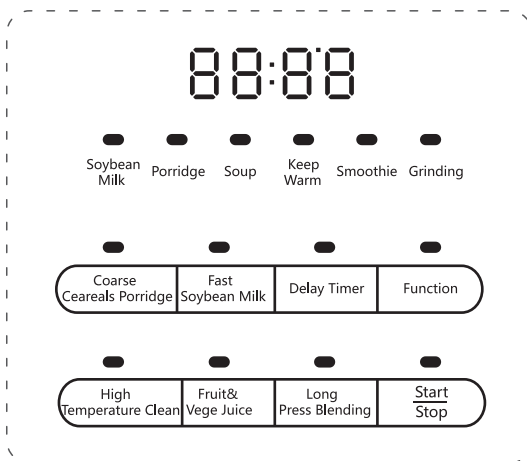
Measuring cup instruction

When making rice cereal/porridge/soybean milk, use 1 cup of soybeans or 3/4~1 cup of rice with about 1,200mL water. The concentration can be adjusted by increasing or decreasing the amount of water according to personal taste.



Buttons operation instruction

Control panel



General functions:

Function names	Operation method
<u>Start</u> Stop	After setting the product work mode, touch the "Start/Stop" button , and the product enters the work state. Touch the "Start/Stop" button while working, the product stop working.
Function	Touch the "Function" button, and the "Soybean Milk" function light turns on. Touch the "Function" button again to turn on the next function light and stop after the required function.

Custom function:

Function names	Operation method
Long Press Blending	After adding ingredients, press and hold the "Long Press Blending" button to start blending. Release the button and blending stops.
Delay Timer	After selecting the function, touch the "Delay Timer" button, then continue to touch the "Delay Timer" button to adjust the time to make the food and touch the "Start/Stop" button to start. Note: Delay timer applies to the heating function.

Heating function:

Function names	Operation method
Coarse Cereals Porridge	Add ingredients, select the function, and then touch the "Start/Stop" button to enter the working state. The food needs to be boiled first, then whipped and boiled for a long time. Note: 1. In the Soup mode, food will not be broken but it will lead to few food detritus by slight stirring. 2. Dry corn, red beans, mung beans, barley and other hard and dry ingredients need to be soaked in hot water for 4 hours in advance.
Fast Soybean Milk	
Soybean Milk	
Porridge	
Soup	
Keep Warm	After adding an appropriate amount of water, select the "Keep Warm" function. Touch the "Start/Stop" button, the cup starts working with slight agitation. And the water temperature in the mixing cup will be maintained at about 55°C for nearly 6 hours.
High Temperature Clean	Used to help clean the hot cup. After adding 1,000mL water (the amount of water can be adjusted appropriately), select the "High Temperature Clean" function. Touch the "Start/Stop" button to start work. And when the countdown ends the work is completed. Note: "High Temperature Clean" is only applicable to the standard hot cup. If the fruit drinking cup is placed, it won't heat in the "High Temperature Clean" mode; if the blender cup is placed, do not activate the function.

Non-heating function:

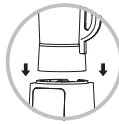
Function names	Operation method
Fruit & Vege Juice	Add ingredients, select the function, and then touch the "Start/Stop" button to enter the working state. Note: For grinding dry goods and medicinal herbs, please use stainless steel blender cups or quite blender cups instead of hot cups.
Smoothie	
Grinding	

Intelligent altitude identification

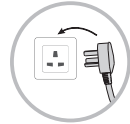
To fully ensure the effect of the preparation of the ingredients, prior to the operation of the appliance, or the appliance is moved to a region with a large change in altitude, firstly do the following steps below:



Add water (do not add any ingredients) to 1.0L ~ 1.2L lines.



Place the stirring cup and lid in place and place it on the base.



Connect the power.



Within 30 seconds of electrifying, press and hold the "Fast Soybean Milk" and "Delay Timer" keys at the same time for 3 seconds to enter the intelligent altitude recognition mode.



After the setting is completed, blending will last for a short time, and the display screen will show "88:88" in a circle, and the blender will heat until the water boils.



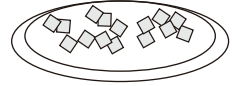
The display shows "88:88" while the "beep" tone is issued; the altitude self-adapting program is completed. Please disconnect the power supply.

Note:

1. The appliance is adapted to the water temperature and the elevation and voltage where it is located automatically in real-time manner during the operation; the functional preparation procedures are adjusted to the best condition to ensure the full release of food nutrients and to prevent altitude and voltage changes which lead to raw materials, overflow, burnt base and other problems.
2. The boiling water process may generate large amount of vapour, please be careful to prevent scalding.
3. After completing the intelligent altitude identification, the appliance has been adjusted to the best production process in local environment and keeps running in such state.

Usage

1. Cut the ingredients into blocks no more than 5 centimetres long. (Meat cut into strips and remove tendon.)



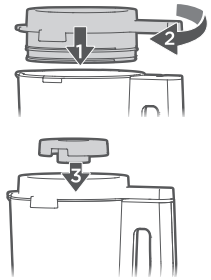
-
2. Use the measuring cup to get the right amount of ingredients according to the recipe, pour it into the mixing cup, and add the right amount of water.



Note:

Adjust the amount of water according to recipes ratio.

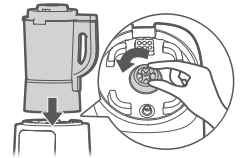
-
3. Stagger the buckles on both sides of the cup lid to align the cup lugs, press the cup lid into the mixing cup, then turn the lid clockwise to buckle the mixing cup, and finally screw the feeding lid onto the cup lid.



Note:

- The lid sealing ring cannot be missing.
- The mixing cup has an open lid protection device. If the lid is not rotated in place, the product will not work. The display flashes "----".

-
4. Put the mixing cup properly on the base, plug in the power cord, and when the power is turned on, the product will beep and the display lights up.



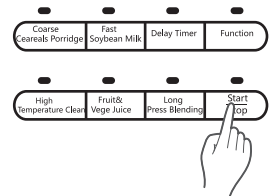
Note:

If the mixing cup cannot be placed flat on the base, please slightly rotate the angle of the connector on the base, and then place the mixing cup on the base again.

-
5. Select functions according to your needs. Touch the "Start/Stop" button, the product starts to work.

Note:

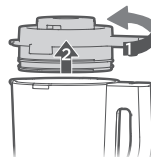
- During the operation, the motor may have intermittent speed actions which is normal.
- There is a waiting time after the heating function is activated. When the water reaches a certain temperature, it will enter the countdown.



6. After the work is completed, you will hear the warning sound of “di di...” . Unplug the power cord, remove the stirring cup and , open the cup lid.

Note:

To prevent burning, be aware of the hot steam when opening the cup lid.



7. Pour out the liquid and add seasoning according to personal preference.

Note:

Do not rush to pour out the liquid to prevent liquid spillage.



Recipes

Name	Ingredients and methods of preparation
Oat and barley paste	<p>Ingredients: 24g barley, 24g oats, 24g soybeans, 24g red dates (with pits removed), 12g pine nuts, 12g flax seeds</p> <p>Method: Wash all the ingredients and put them into the hot cup, add 1,000mL water (can be increased or decreased according to taste). Select the "Coarse Ceareals Porridge" function, touch the "Start/Stop" button, and wait for the paste to be completed.</p>
Soybean milk	<p>Ingredients: 85g soybeans</p> <p>Method: Wash all the ingredients and put them into the hot cup, add water to the 1,000mL mark (can be increased or decreased according to taste). Select the "Fast Soybean Milk" function, touch the "Start/Stop" button, and wait for the drink to be completed.</p>
Soybean milk with walnut and oat	<p>Ingredients: 50g dried soybeans, 20g raw oats and 15g walnut kernels (approximate one piece)</p> <p>Method: Wash all the ingredients, put them into the hot cup and add 1,000mL water (can be increased or decreased according to taste). Select the "Soybean Milk" function, touch the "Start/Stop" button, and wait for the drink to be completed.</p>
Nutritious porridge	<p>Ingredients: 50g rice</p> <p>Method: Wash the rice and put it into the hot cup, add 1,000mL water (can be increased or decreased according to taste). Select the "Porridge" function, touch the "Start/Stop" button, and wait for the porridge to be completed.</p>

Name	Ingredients and methods of preparation
Ribs soup	<p>Ingredients: Half of a corn (about 200g), 200g ribs, 200g carrots, 5 slices of ginger and salt added according to personal preference</p> <p>Method: Cut the washed ribs and carrots into pieces and corns into 6 sections and put them into the hot cup, then add about 700mL water (can be increased or decreased according to taste). Next, select the "Soup" function, and touch the "Start/Stop" button and wait for the food to be completed.</p>
Mango Smoothie	<p>Ingredients: 400g mangos, 250mL yogurt, 200g ice cubes</p> <p>Method: Wash, peel, core, and dice the mangos and put them into the hot cup, then add yogurt and ice cubes. Select the "Smoothie" function, touch the "Start/Stop" button, and wait for the smoothie to be completed.</p>
Red bean barley flour	<p>Ingredients: 50g red beans and barley (baked and dehydrated, fried), 10g dried red dates</p> <p>Method: Dry and fry 50g red beans and 50g barley, and add 10g dried red dates into the stainless steel blender cup. Select the "Grinding" function, touch the "Start/Stop" button, and wait for the drink to be completed.</p> <p>Reminder: Stainless steel blender cup is an extra accessory and needs to be bought additionally.</p>
Banana and apple juice	<p>Ingredients: 1 spoonful of honey, 100g milk, 1 banana, 120g apples (about half of an apple) (recommended to add ice cubes: 3 pieces, for better taste)</p> <p>Method: Wash the apples and remove the seeds, and then cut them into pieces no more than 5cm; Cut the banana into 6 pieces. Then put the ingredients into the hot cup, and pour 100g milk and 1 spoonful of honey. Select the "Fruit & Vege Juice" function, touch the "Start/Stop" button, and wait for the juice to be completed.</p> <p>Reminder: Apples are easy to oxidize and change color, so please drink as soon as possible.</p>
Carrot milk	<p>Ingredients: 700g carrots, 1000g milk</p> <p>Method: Wash and dice the carrots and put them into the hot cup, then add milk. Press and hold the "Long Press Blending" button for 1 minute, or select the "Fruit & Vege Juice" function and touch the "Start/Stop" button, and wait for the juice to be completed.</p>

Care and Cleaning

Cleaning

- After the juice is poured out of the mixing cup, add clean water immediately and use the "High Temperature Clean" function or press the "Long Press Blending" button several times to clean the cup.
- Disconnect the power supply. The outer case may be cleaned with a wringed cloth. To prevent leakage or damage to the equipment, do not immerse the machine into water or other liquids, do not wash directly under running water or other liquids.
- When cleaning, please rinse the inside of the stirring cup with water and wipe dry; the blade is very sharp, please be careful when leaning to avoid injury.
- After using, it's necessary to clean the cup lid, sealing ring, etc., as soon as possible to avoid staining after being placed for a long time. If some parts are stained with food, try adding a few drops of cooking oil to wipe before rinsing.
- Rinse the parts with water and then dry it thoroughly.
- Be careful of burning by overheating; please clean up the stirring cup after cooling.
- When the residue in the drum is dry and difficult to remove add the appropriate amount of water for soaking, wait for 0.5 to 1 hour for softening, and then clean it up and wipe dry.
- The electricity conducted components such as product base, stirring cup, power cord, etc cannot be immersed into water and other liquids.
- If the bottom of the stainless steel heating plate is not cleaned up for several times, light brown dirt will be accumulated on its bottom. At this time, soak the plate with water for a long time, and use a slightly harder cloth to dip white vinegar and wipe it along the bottom texture in rotation.
- Do not directly wash the base and the bottom of the stirring cup under running water.
- Do not place the appliance, power cord, and packaging accessories under the sun.

Maintenance

- For prolonged storage, keep it in a dry and ventilated place to prevent the motor from moisture and affecting normal usage.

Abnormality Analysis and Handling

Abnormality Handling

- If anomalies occur, such as: abnormal noise, smell, smoke, etc., cut off the power immediately and stop using it.
- If the blender cup does not work: Please check whether the power supply is well connected, whether the switch is turned on, and whether the mixing cup and the cup lid are in place.
- If the product still cannot work after checks mentioned above, please consult the designated repair centre for maintenance.

Troubleshooting and analysis

Abnormal situation	Analysis of Possible Causes	Countermeasure
Spill over	Too much or too little Ingredients	Put the amount of ingredients according to the instruction manual
	Too much or too little water	Please add water to appropriate water level
	Wrong selection of function	Select the function according to the instruction manual
	Appliance breakdown	Send to local after-sales service centre for maintenance
	The cup lid with spill-proof function is not fully covered in placed	Please ensure that the cup lid is in placed and the signal is reliably connected
Burnt ingredients	Too much Ingredients	Put the amount of ingredients according to the instruction manual
	Placed wrong ingredients	Do not put in flour and ingredients that can seriously burned at the bottom
	Too little water	Please add water to appropriate water level
	The bottom of the cup is not washed clean	Please wash it clean before use
	Wrong selection of function	Select the function according to the instruction manual
	Appliance breakdown	Send to local after-sales service centre for maintenance

Abnormal situation	Analysis of Possible Causes	Countermeasure
Ingredients cannot be broken into pieces	Too much or too little Ingredients	Please follow recipes
	Too much or too little water	Please add water to appropriate water level
	Wrong selection of function	Select the function according to the instruction manual
	Appliance breakdown	Send to local after-sales service centre for maintenance
At the end of the work, the ingredients are not hot	Wrong selection of function gear. Under this function gear, food is only heated without whipping	Select the function according to the instruction manual
	Appliance breakdown	Send to local after-sales service centre for maintenance
Work noise	Motor stirring sound	Normal phenomenon
	Product break-in period	Occasional noise is a normal phenomenon
	Abnormal sound, motor anomaly	Send to local after-sales service centre for maintenance
Display "----"	The cup lid is not installed in place	Reinstall the lid
	Appliance breakdown	Send to local after-sales service centre for maintenance
The screen is not display	The power cord is not plugged in	Check the power cord and ensure it is plugged in
	Appliance breakdown	Send to local after-sales service centre for maintenance
	The cup is not in place	Refill the cup
Button no response	The machine cannot be operated while it is working	Normal phenomenon
	The panel has water, affecting the level of sensitivity	Wipe dry the panel
	Appliance breakdown	Send to local after-sales service centre for maintenance
The screen is on, but machine not working	Start/Stop button not pressed	Reselect the function and press the Start/Stop button
	No water in the cup to protect overheating	Please add water to the correct water level, restart after cooling it
	A tweet alarm occurred while working	Unplug the power first, reconnect and follow the normal working steps be operated
	Appliance breakdown	Send to local after-sales service centre for maintenance

Malfunction display

Reminder:

If alarm sounds appear during the production process, and letters and numbers appear in the display at the same time. Please take measures in according to the below table.

Code	Analysis of Possible Causes	Countermeasure
E1	<ul style="list-style-type: none"> • Water seepage in the machine base, it mainly happens in the docking part of machine base and cup, and in the circuit board, etc. • Water seepage in machine base 	<p>Replace the mixing cup and confirm whether it is the cup malfunction or the base malfunction. If confirms it is a base malfunction, please proceed as follows:</p> <ul style="list-style-type: none"> • The watermarks inside the machine air-dries naturally, prevent water seepage • If the malfunction is irreparable, please send to the after-sales service outlet for repair
E2	<ul style="list-style-type: none"> • The cup is not docked in place with the base • Circuit board malfunction, machine internal wiring malfunction 	
C3	<ul style="list-style-type: none"> • Circuit board malfunction, machine internal wiring malfunction • The cup is not docked in place with the base • Water seepage in machine base • The internal wiring of the machine base loosening or disconnecting • The circuit board malfunctions • Thermostat high temperature protection 	<ul style="list-style-type: none"> • Heating excessive amount of ingredients, causes the food to become burnt, high-temperature alarm, clean up the ingredients in the cup, and re-start the process according to the ingredients quantity in the instructions • The watermarks inside the machine air-dries naturally, prevent water seepage • If the malfunction is irreparable, please send to the after-sales service outlet for repair
E0	<ul style="list-style-type: none"> • Circuit board malfunction • Water inside the machine 	<ul style="list-style-type: none"> • The watermarks inside the machine air-dries naturally, prevent water seepage • If the malfunction is irreparable, please send to the after-sales service outlet for repair