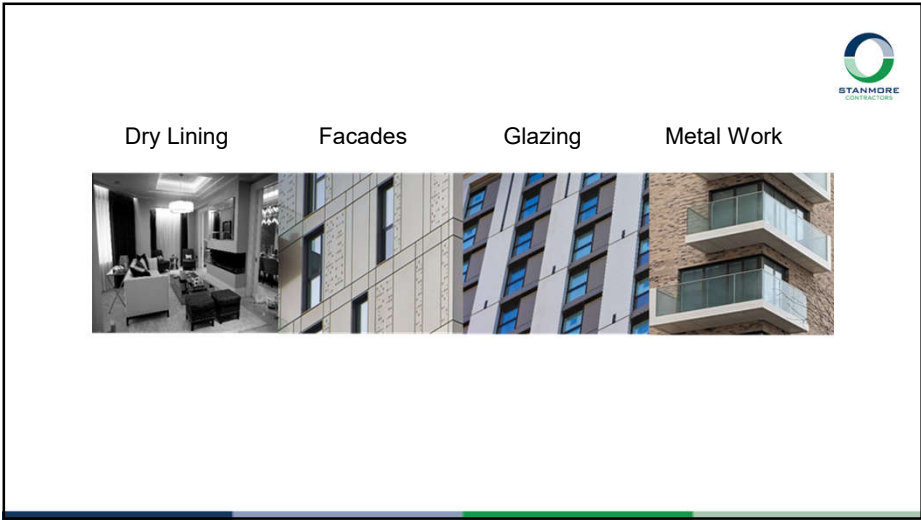
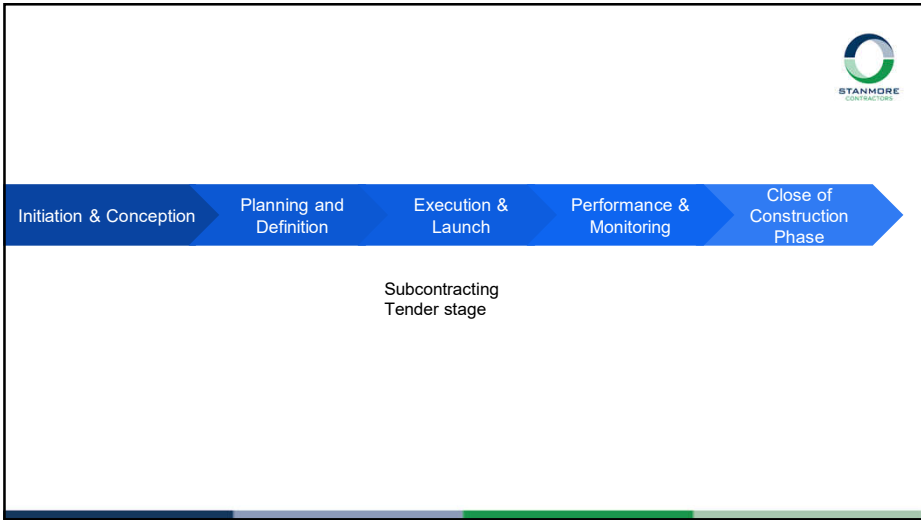




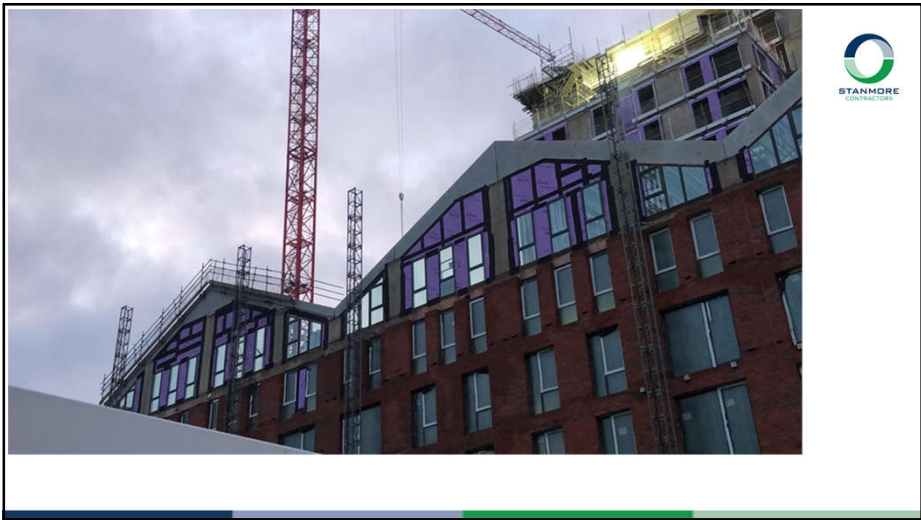
1



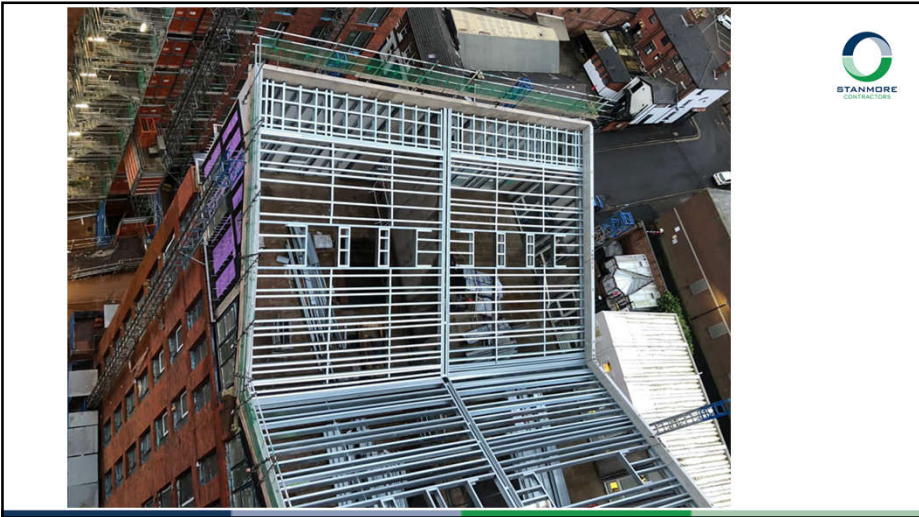
2



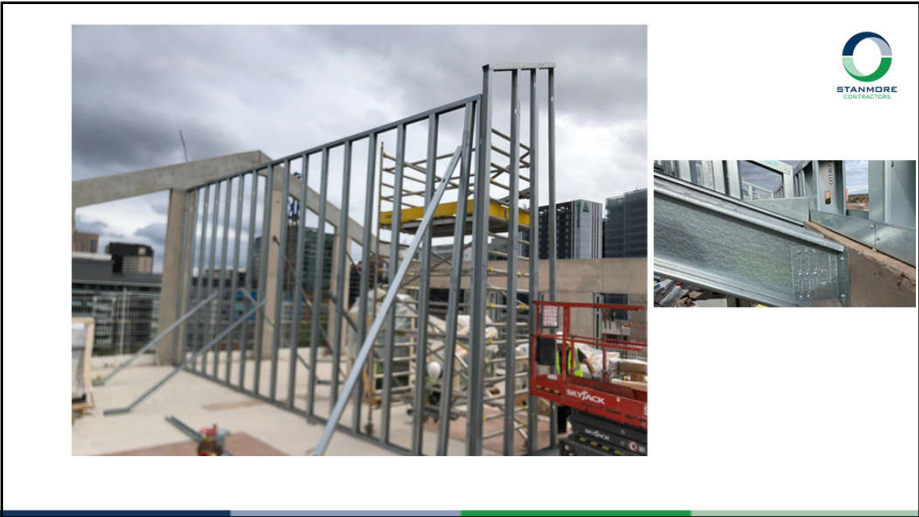
3



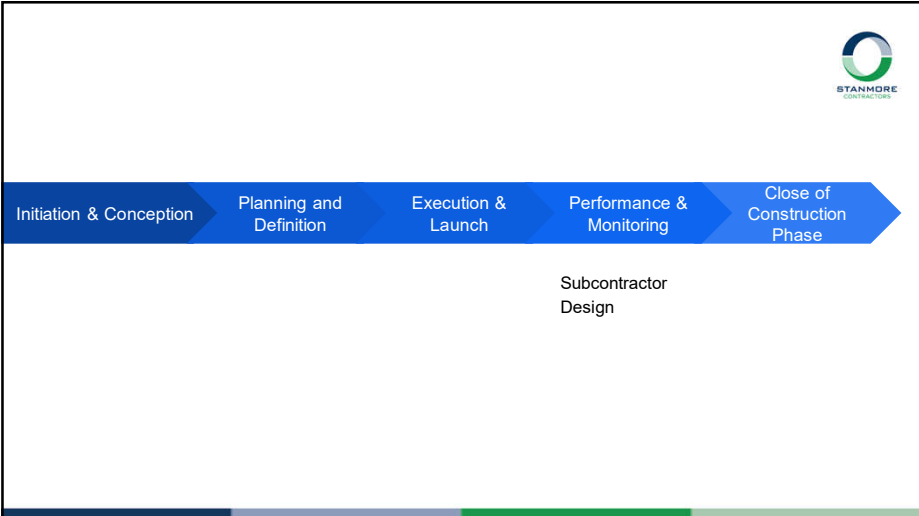
4



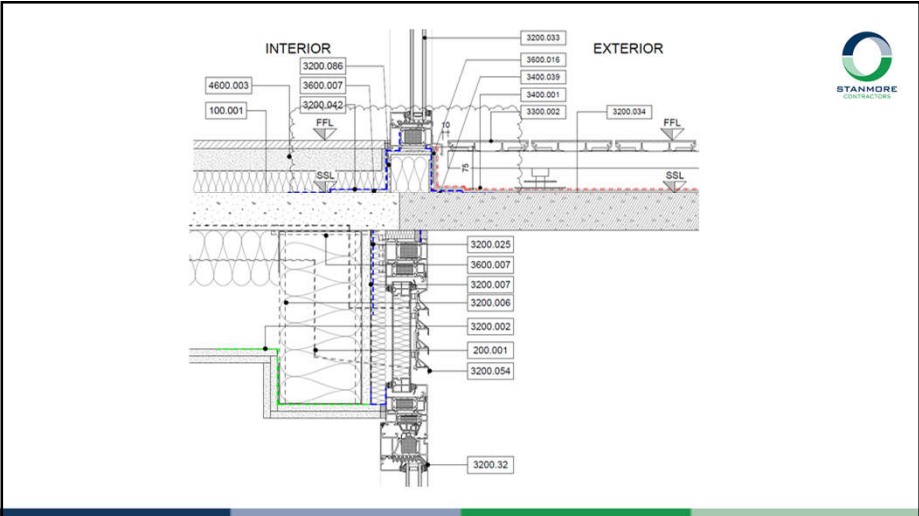
5



6



7



8

- Compatibility and application of products

Images of the Adhesion Test



Summary

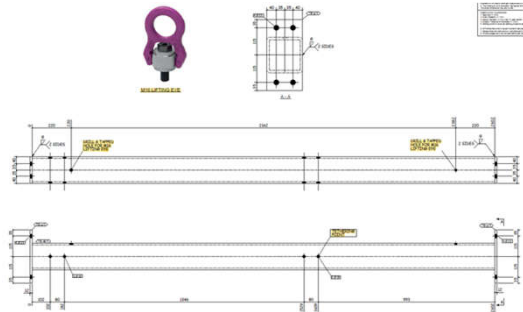
Test B - Satisfactory adhesion was achieved to the face of the Powder Coated Aluminium Profile sample when tested in conjunction with Sika Hyflex 250 Concrete Grey primed with Sika Aktivator 205. Satisfactory adhesion was also seen on the un-primed face of the Powder Coated Aluminium Profile sample with Sika Hyflex 250 Concrete Grey.

Test C - Satisfactory adhesion was achieved to the face of the Powder Coated Aluminium Profile sample when tested in conjunction with Sika Hyflex 250 Concrete Grey primed with Sika Aktivator 205. Satisfactory adhesion was also seen on the un-primed face of the Powder Coated Aluminium Profile sample with Sika Hyflex 250 Concrete Grey.

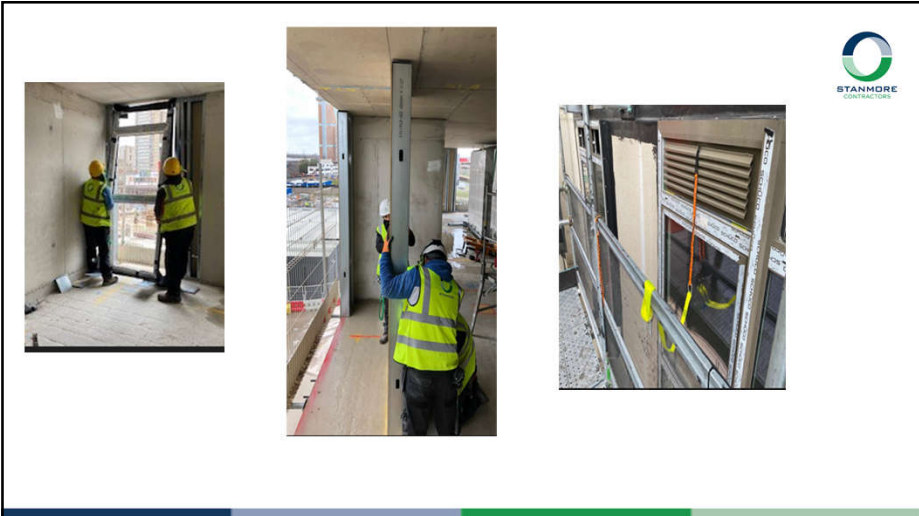


9

- Handling and installation considerations



10



11

- Fixing considerations

ALUMINIUM CLADDING - 7 Types					
TYPE NUMBER	TYPE REFERENCE	FIXING TYPE	DESCRIPTION	APPLICATION	APPLICATION DESCRIPTION
1	F2	EJOT J78 3.8.3 X 30	6.3MM DIAMETER STAINLESS STEEL SELF DRILLING SCREW - FIXES INTO ALUM/STEEL SECTIONS OF 2-3MM THICK	ALUMINIUM CLADDING	ALUMINIUM SOFFIT SUPPORT TO 3MM MAX ALUMINIUM / STEEL
2	F3	EJOT J76 6.5.5 X 35	6.3MM DIAMETER STAINLESS STEEL SELF DRILLING SCREW WITH 32MM EPDM WASHER - FIXES INTO ALUM/STEEL SECTIONS OF 1.2-3MM THICK WITH CLAMPING THICKNESS OF 2-3MM	ALUMINIUM CLADDING	ALUMINIUM PROFILE TO 3MM THICK ALUMINIUM / STEEL
3	F4	EJOT J73 FR 2H 6.3 X 25 S12	6.3 MM DIAMETER STAINLESS STEEL SELF DRILLING SCREW - WITH 32MM EPDM WASHER, 28MM LENGTH	ALUMINIUM CLADDING	COPING PROFILE TO TOPHAT SUPPORT BRACKET
3	F5	MAINLINE S 0 X 12 X 14 - 6.0 - 8.0 (ALMG S)	3MM DOME HEAD ALUMINIUM/STAINLESS STEEL RIVET COLOUR MATCHED TO PVC PROFILE WITH A GSP	ALUMINIUM CLADDING	ALUMINIUM SOFFIT PANEL TO 3MM ALUMINIUM SUPPORT FRAME
3	F6	MAINLINE S 0 X 12 X 14 - 6.0 - 8.0 (ALMG S)	3MM DOME HEAD ALUMINIUM/STAINLESS STEEL RIVET COLOUR MATCHED TO PVC PROFILE WITH A GSP	ALUMINIUM CLADDING	ALUMINIUM FLASHING TO FLASHING SUPPORT BRACKET
4	F7	MAINLINE SWL502/5 5.5 X 35	LOW PROFILE STAINLESS STEEL 5.5MM DIAMETER TEK SCREW AS PER GENIUS FRAME TESTING DOCUMENTATION	ALUMINIUM CLADDING	15MM ALUMINIUM RAINSCREEN CLADDING PANEL SUPPORT CLIP TO 20MM HEADING VERTICAL RAIL
4	F8	MAINLINE SWL502/5 5.5 X 35	LOW PROFILE STAINLESS STEEL 5.5MM DIAMETER TEK SCREW AS PER GENIUS FRAME TESTING DOCUMENTATION	ALUMINIUM CLADDING	ALUMINIUM RAINSCREEN CLADDING PANEL HEAD FIXING INTO VERTICAL LIT RAIL
4	F9	MAINLINE SWL502/5 5.5 X 35 S12	5.5MM LOW PROFILE DOME HEAD STAINLESS STEEL SELF DRILLING SCREW WITH 32MM EPDM WASHER, 30MM LENGTH COLOUR MATCHED TO FLASHING	ALUMINIUM CLADDING	ALUMINIUM FLASHING TO WINDOW FRAME
5	F11	EJOT J73 6.5.5 X 30 S14	5.5MM DIAMETER STAINLESS STEEL SELF DRILLING SCREW WITH 32MM EPDM WASHER, 30MM LENGTH FOR 3MM CLAMPING	ALUMINIUM CLADDING	COPING SUPPORT TOPHAT BRACKET TO 3MM ALUMINIUM SUPPORT ANGLE
6	F69	NVELOPE 04/04S/5 SK22	5.5MM DIAMETER STAINLESS STEEL SELF DRILLING SCREW SPECIFICALLY SPECIFIED	ALUMINIUM CLADDING	NVELOPE HELPING HAND SYSTEM VERTICAL RAIL FIXING TO VERTICAL ALUMINIUM RAIL
7	F70	EJOT J74 FR 4.5 X 19	STAINLESS STEEL SELF DRILLING SCREW	ALUMINIUM CLADDING	ALUMINIUM SOFFIT FLASHING @ JULIET BALCONY
8	F71	MAINLINE SWSH/SW3/44S 5.5 X 65 X 14-A4	5.5MM DIAMETER STAINLESS STEEL LOW PROFILE 65MM LENGTH FIXINGS TO CLAMP SOFFIT C CHANNEL @ 300MM	ALUMINIUM CLADDING	ALUMINIUM SOFFIT FLASHING @ JULIET BALCONY



12

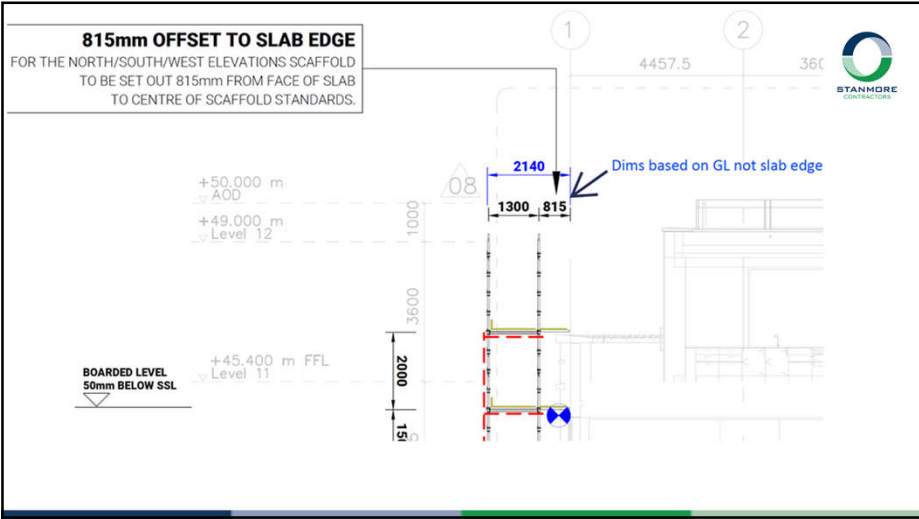


13

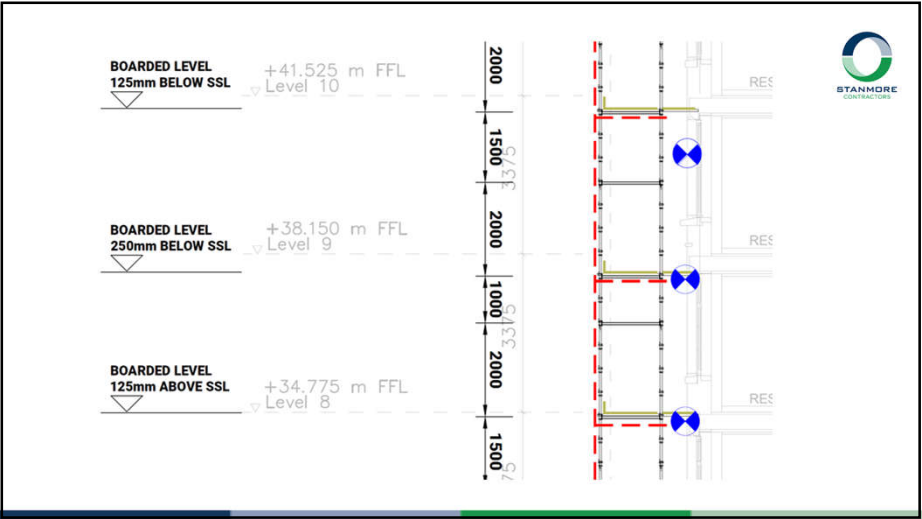
14

15

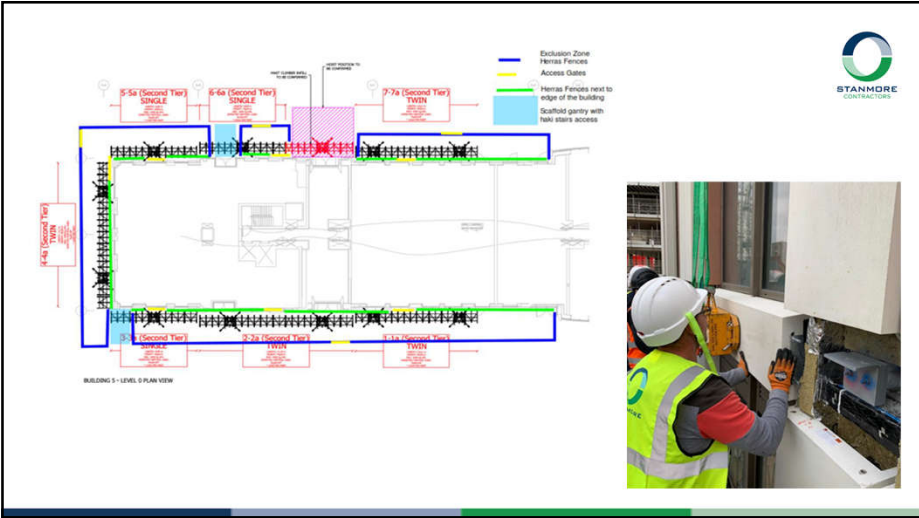
16



17



18





19





20

GRC Install Challenges



21


QR Code - Unloading & Distribution



Picture showing proprietary tethering equipment allowed when working on leading edge.

22

Glass Installation





23

Challenges:



- Regulation Changes
- Compliance Requirements
- Traceability of Products & Services
- Competency of Operatives & Staff
- Third Party Accredited Install Services (IFC)
- Compliance with ISO standards and Information Management Systems

Steps taken to tackle these challenges:



Stanmore Quality Recording System  
(SQRS)


24



Have the below Sections

- Technical Library
- Products Library
- Passive Fire Protection
- Internal Training Slides

Data is continually added to these sections as we go..




*Stanmore Quality Recording System*

**The System lets you**

- Prepare Quality Documents
- Prepare Quality Check Lists
- Record Quality Evidence (by taking photos/videos)
- Download and Email Reports (if needed)
- Record Short Trainings (TBTs)
- Request Pull Tests
- More functionalities being added as we go..

25



Initiation & Conception

Planning and Definition

Execution & Launch


Performance & Monitoring

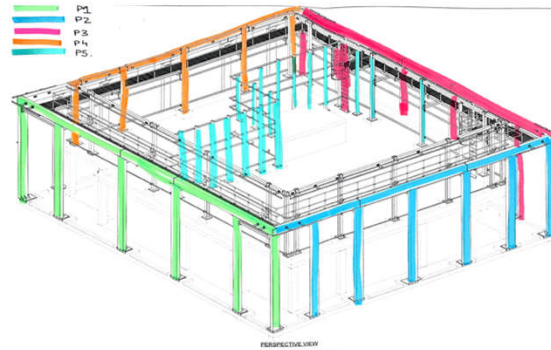
Close of Construction Phase

Subcontracting engagement

Subcontracting Tender stage


26

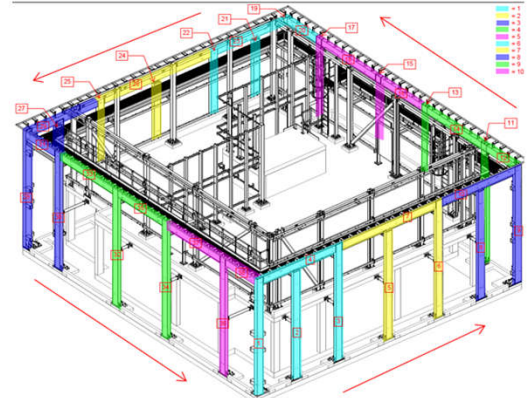




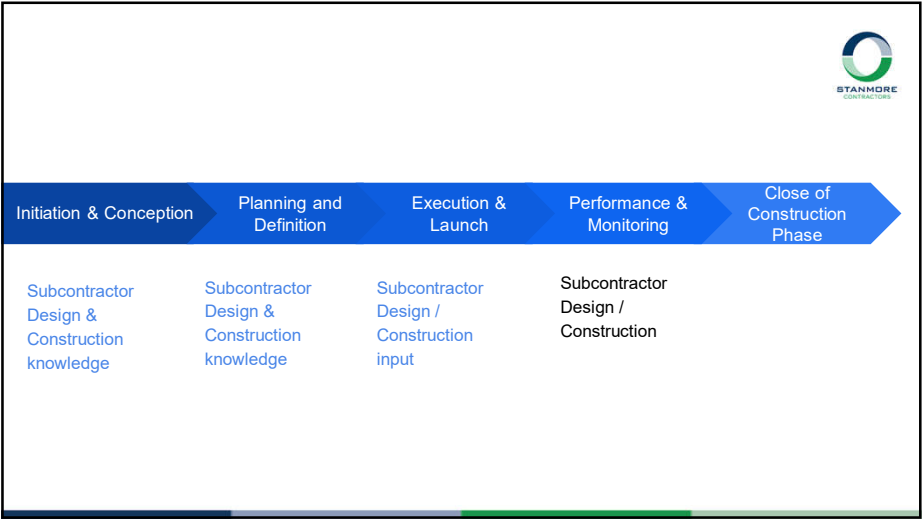
PERSPECTIVE VIEW

27

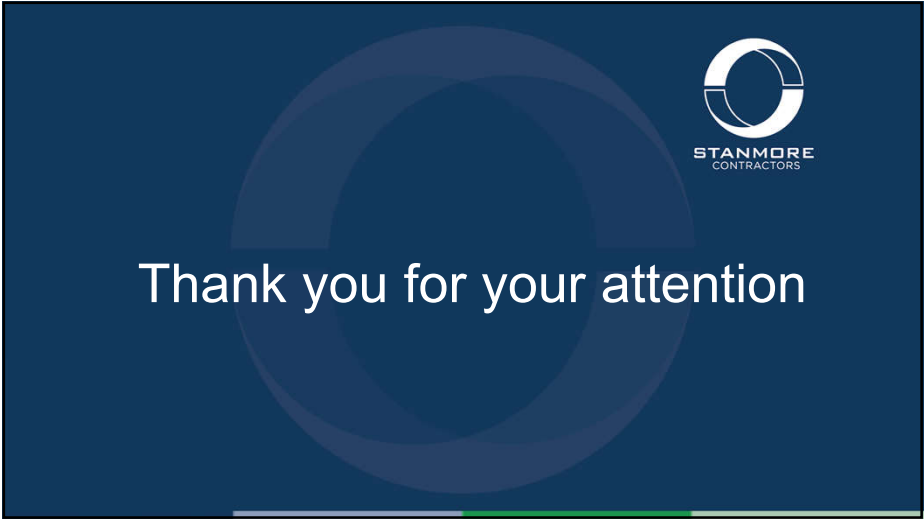




28



29



30