



Collaborative Reporting for Safer Structures

Neil Gibbins QFSM FIFireE HonFstructE-
Fire lead- CROSS-UK

www.cross-safety.org

1

Overview

- CROSS purpose and aims
- The confidential reporting process, what can be reported and the benefits
- The safety information CROSS provides and where to find it

www.cross-safety.org

2

About CROSS



CROSS

COLLABORATIVE REPORTING
FOR SAFER STRUCTURES



3

CROSS scheme timeline

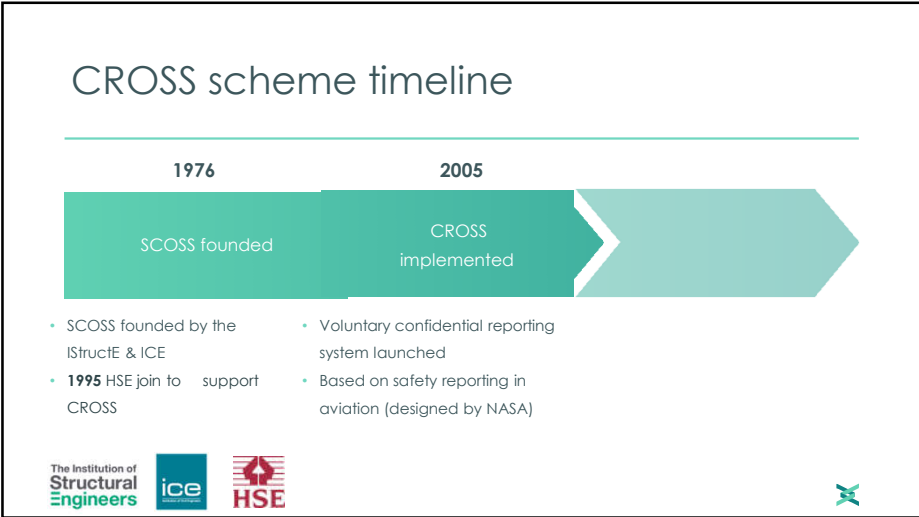
1976

SCOSS founded

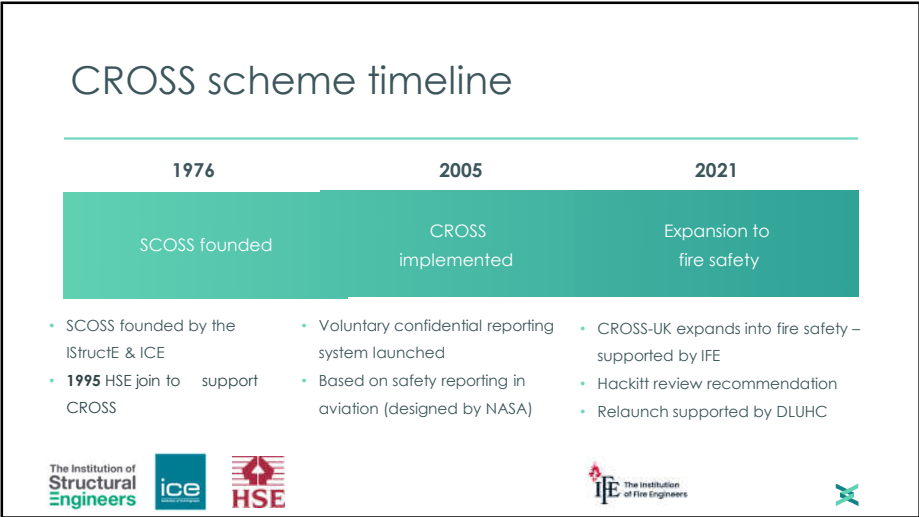
- SCOSS founded by the IStructE & ICE
- 1995 HSE join to support CROSS



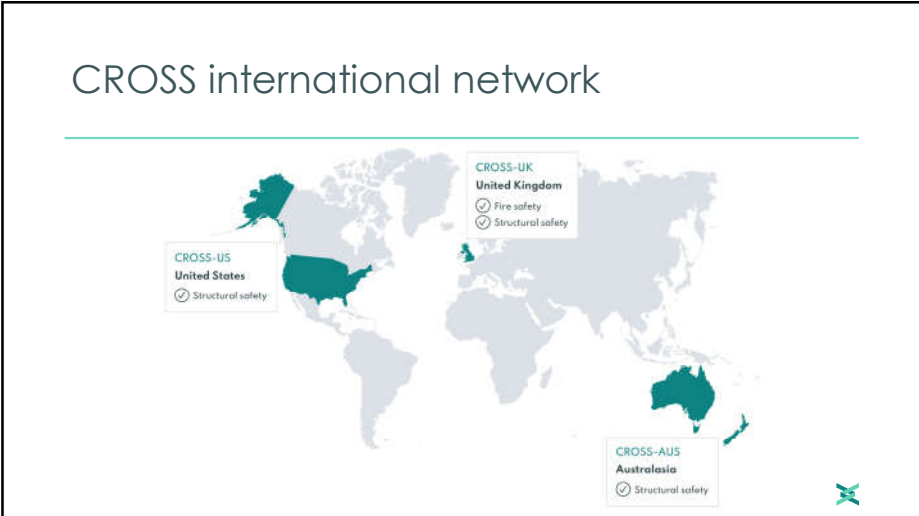
4



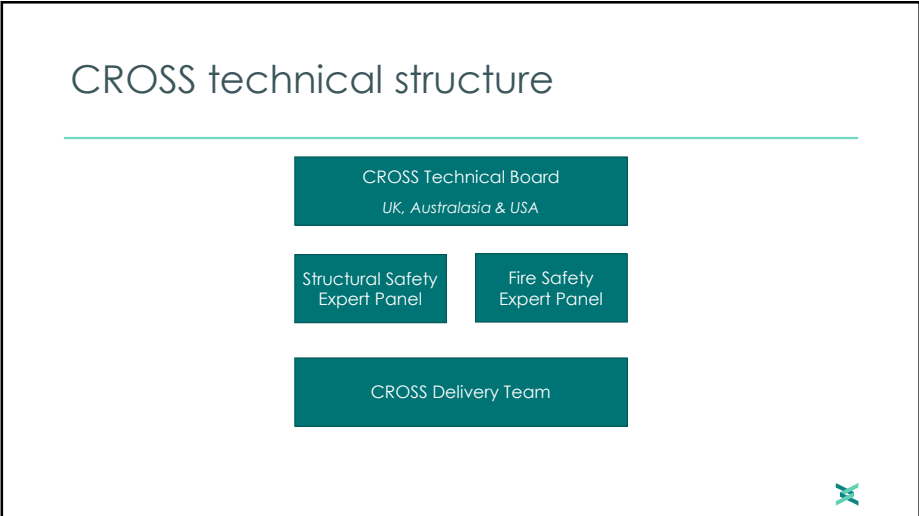
5



6



7



8

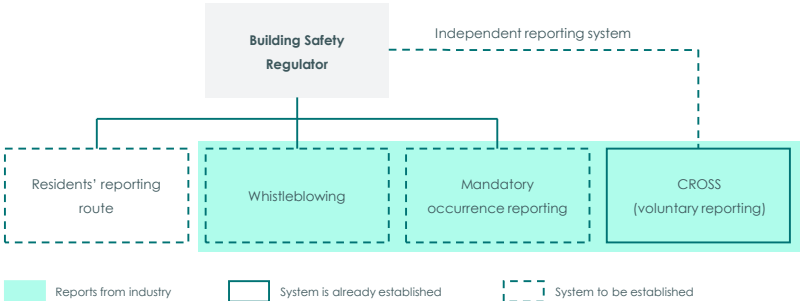
Expert Panel Members

Engineers	Legal	Transport	Regulators & Government
<ul style="list-style-type: none">Civil & structuralFireBlast & resilienceForensic / expert witnessNuclear	<ul style="list-style-type: none">Insurance & warrantyLawyer	<ul style="list-style-type: none">National HighwaysNetwork Rail	<ul style="list-style-type: none">DLUHCBuilding ControlHSE
	Contractors	Fire & Rescue Officer	Early careers members
	Products & Testing		



9

Overview of safety reporting systems



10

The reporting process – how and what to report



11

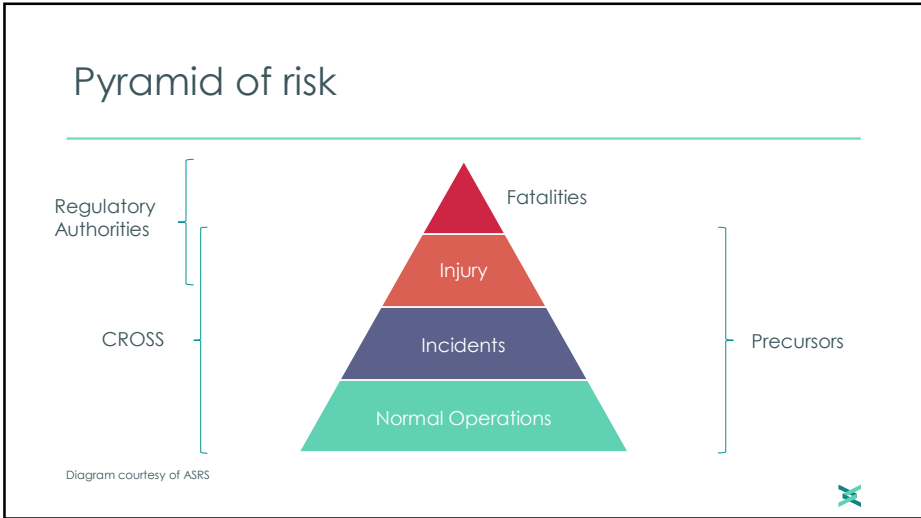
How the reporting process works



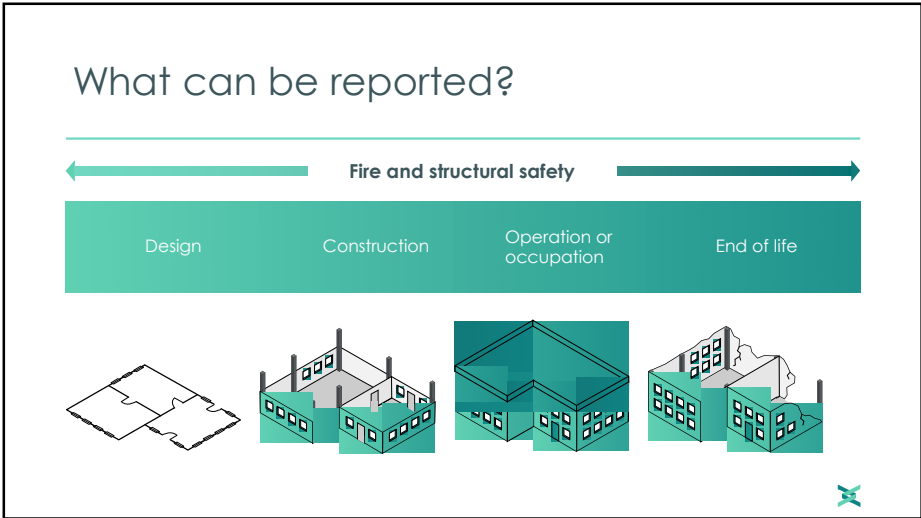
- Key principles:**
- Confidential & secure
 - Simple & transparent
 - Easy to access
 - Expert insight



12



13



14



15



16

Benefits of safety reporting

For individuals

- Continuous learning and development
- Improve your knowledge of safety
- Keep up to date with emerging safety issues
- Find out more about best practice
- Keep your colleagues and peers updated



www.cross-safety.org



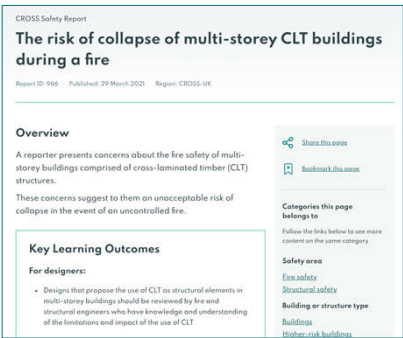
17

Where to find reports



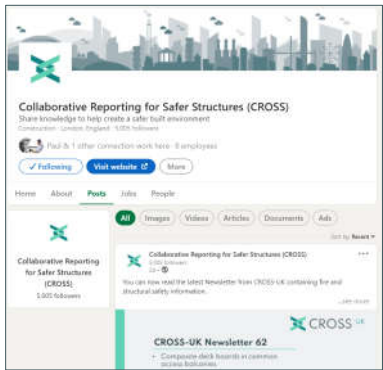
18

Website



19

Social media



20

Email

Overview

CROSS-UK Newsletter 62 has been published and includes expert comment on fire and structural safety reports.

[View Newsletter](#)

Newsletter content

[Composite deck boards in common access balconies](#)

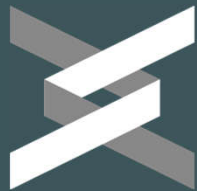
A reporter informs CROSS that decking boards formed of a composite material contributed to external fire development in a block of flats and rendered the means of escape and firefighting access unusable.

CROSS Safety Report Report ID: 1048



21

The safety information CROSS shares



CROSS

COLLABORATIVE REPORTING
FOR SAFER STRUCTURES



22

Safety information we provide

CROSS Safety Reports



CROSS Safety Alerts



CROSS Feature Articles



CROSS Theme Pages



Third party content



23

CROSS Safety Reports

CROSS Safety Report

Temporary movement joint in slabs not installed correctly

Report ID: 998 Published: 29 March 2021 Region: CROSS-UK

Overview

Doors in temporary movement joints for a slab were not installed correctly, impacting the structural behaviour.

Key Learning Outcomes

For civil and structural design engineers:

- If possible, attend site and inspect the installation of safety critical components such as shear connectors to ensure they are installed as per the design intent
- If you are unable to attend site, ask the contractor for site photos of the installation of these components

[Like this report](#)

[Bookmark this page](#)

Categories this page belongs to:

Follow the links below to see more content on the same category:

Safety areas

Structural safety

Building or structure type



24

CROSS Safety Alerts

CROSS Safety Alert

Safety issues associated with balconies

Region: CROSS-UK, CROSS-AUS, CROSS-US Published: 17 February 2022



Share this page

Bookmark this page

Categories this page belongs to:

Follow the links below to see more content on the same category:

Safety area:

- Fire safety
- Structural safety

Building or structure type:

- Buildings
- Elements & systems
- Materials

25

CROSS Feature Articles

CROSS Feature Article

Cross-laminated timber (CLT) in multi-storey buildings

Region: CROSS-UK Published: 3 August 2021

The **CROSS-UK Fire Safety Expert Panel** share their views about the interpretation and application of the Building Act 1984 with regards to the use of cross-laminated timber (CLT) in multi-storey buildings.

In **report 366**, the reporter presented concerns about the fire safety of multi-storey buildings comprised of CLT. CROSS has subsequently received additional comments on this report which have highlighted the associated need for improved understanding of both the low and related technical matters by architects and engineers.

One commentator noted that many architects and engineers currently believe that compliance with the Approved Documents can be assumed to guarantee compliance with Building Regulations. This observation aligns with the findings of Dame Judith Hackitt's **Independent Review of Building Regulations and Fire Safety** – that 'The cumulative impact of the Approved Documents changes an outcome-based system of regulation to one that is often referred to as **rules to be memorised**' (Paragraph 1.26).

Share this page

Bookmark this page

Categories this page belongs to:

Follow the links below to see more content on the same category:

Safety area:

- Fire safety

Building or structure type:

- Buildings
- Reinforced buildings

26

CROSS Theme Pages

CROSS Theme Page

Safety of structures in the climate emergency

Region: CROSS-UK, CROSS-AUS, CROSS-US



Share this page

Bookmark this page

Categories this page belongs to:

Follow the links below to see more content on the same category:

Safety area:

- Fire safety
- Structural safety

Design:

- Sustainability

Content type:

27

Third party content

Third party content

Reinforced autoclaved aerated concrete in roofing in schools

Publisher: Department for Education Published: 30 February 2021

Overview

This document is for building owners to help them:

- identify the presence of reinforced autoclaved aerated concrete (RAAC)
- check whether any further investigation or action is needed

[Read this guidance \(website link\)](#)

Share this page

Bookmark this page

Categories this page belongs to:

Follow the links below to see more content on the same category:

Safety area:

28

Fire in multi-storey car parks

CROSS Safety Alert



Fire on separate levels. Image courtesy of Liverpool Fire and Rescue Services (MFRS).



Disintegration of floor slab. Image courtesy of MFRS.



29

Safety issues associated with balconies

CROSS Safety Alert



Older stone balconies



Fire on timber balconies in London



30

The risk of collapse of multi-storey CLT buildings during a fire

CROSS Safety Report

Overview

A reporter presents concerns about the fire safety of multi-storey buildings comprised of cross-laminated timber (CLT) structures.

These concerns suggest to them an unacceptable risk of collapse in the event of an uncontrolled fire.



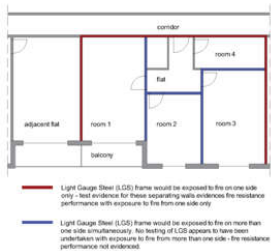
31

Fire protection to light gauge steel frame walls

CROSS Safety Report

Overview

A disagreement between fire engineers and manufacturers on testing for the loadbearing performance of light gauge steel frame walls in case of fire has been reported.



32

Fire compartmentation detailing issues

CROSS Safety Report

Overview

Two reports have been received concerning fire compartmentation detailing issues; one on the incorrect installation of fire batts and the other on the incorrect use of intumescent material.



33

Water ingress to cross-laminated timber structural frame

CROSS Safety Report

Overview

In an eight-year-old building that included cross-laminated timber construction, it was found that water penetration had caused parts of the structure to rot. This was not apparent from external inspection.



34

Change of use to care home

CROSS Safety Report

Overview

A report has been received relating to the intended change of use of a large building. The reporter is concerned that there is an increase in the risk factors, while the protection levels remain unchanged.



35

Fire safety risks with lithium-ion batteries

CROSS Safety Report

Overview

A reporter has raised concerns regarding the increase in the use of lithium-ion batteries, along with their related hazards which currently remain unregulated.



36

Composite deck boards in common access balconies

CROSS Safety Report

Overview

A reporter informs CROSS that decking boards formed of a composite material contributed to external fire development in a block of flats and rendered the means of escape and firefighting access unusable.

The report relates to buildings where the access to flats is by means of an external walkway, often referred to as a common access balcony, common balcony, or a balcony/deck approach.



37

Cladding and decking certification

CROSS Safety Report

Overview

A report has been received about a supplier of cladding and decking materials that refuses to provide their potential clients with their products' Reaction to Fire Class.



38

Building Safety Act



CROSS

COLLABORATIVE REPORTING
FOR SAFER STRUCTURES

www.cross-safety.org



39

Building Safety Act (England) 2022

- Consequence of Grenfell fire
- New Building Safety Regulator based within HSE
- Systematic regulatory approach to prevent serious fires or structural failures
- Stringent requirements for buildings at least 18 metres in height or at least 7 storeys and contains at least 2 residential units.
- Make sure that new and existing buildings in England are;
 - designed and constructed to be safe and of a good standard, and
 - are operated and managed in a way that protects people from the spread of fire or structural failure



40

Safety cases

Safety case

- identify the hazards with the potential to cause harm
- assess how people will be harmed and how likely it is to happen
- make sure measures are in place that effectively reduce these risks and limit or mitigate the consequences
- **Hazard** - something with the potential to cause harm or damage
- **Risk** - is the likelihood that a person is harmed, or something is damaged in a certain way by a hazard



41

Safety case for an existing building



Image courtesy of Google Earth

- 12,500 HRBs
- What could go wrong?
- How could it go wrong?
- How significant the impact could be in terms of:
 - the spread of fire
 - structural failure
 - cascading events

42

Stay up-to-date with CROSS



CROSS
COLLABORATIVE REPORTING
FOR SAFER STRUCTURES

43

CROSS account – sign up

bit.ly/cross-account



44

CROSS account – preferences

Communication preferences

Opt-in to each CROSS region you would like to receive emails from. You can save any changes you make at the bottom of this page.

- ☒ CROSS-AUS (Australasia)
- ☒ CROSS-UK (United Kingdom)
- ☒ CROSS-US (United States)

Professional interests

Let us know your professional interests so that we can make the emails you receive from us more relevant to you. You can save any changes you make at the bottom of this page.

Safety area:

- ☒ Fire safety
- ☒ Structural safety

www.cross-safety.org

45

How to get involved

- Keep up to date with emerging safety issues
- Use the information on our website to make structures safer
- Encourage others to get involved with CROSS

www.cross-safety.org

46

Your report will make a difference

Submit a report! Share your experiences to help others and create a safer built environment

www.cross-safety.org/uk/submit-a-report-uk


www.cross-safety.org

47


Any questions?


Create a CROSS account

- Go to bit.ly/cross-account
- Fill in your details and set your email preferences



CROSS on social media

 **Twitter**
[@cross_safety](https://twitter.com/cross_safety)

 **LinkedIn**
Collaborative Reporting for Safer Structures (CROSS)

www.cross-safety.org

48