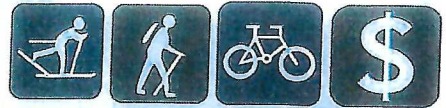


# Drummond Ski Trails



CHEQUAMEGON-NICOLET NATIONAL FOREST

WASHBURN RANGER DISTRICT

The Drummond Ski Trail is tucked in a northern hardwood forest with large inclusions of white pine. The majority of the trails are on gentle terrain. Some of the trails are managed as a part of the CAMBA Mountain Bike Trail System during the summer. The North Country National Scenic Trail traverses through this area with a portion being utilized as a part of the ski trail system in the winter. Please observe the posted allowed uses per season and other rules for the trails and associated facilities.

## Features

- 8.3 miles of groomed ski trails for classic cross-country skiing
- Parking area with a unisex restroom available
- Annual Forest User Pass, Interagency passes (ie. Senior, Military, Access, etc.) or daily user fee required for use of trails and facilities.
- Dogs are not allowed on groomed ski trails during the season.

## Location

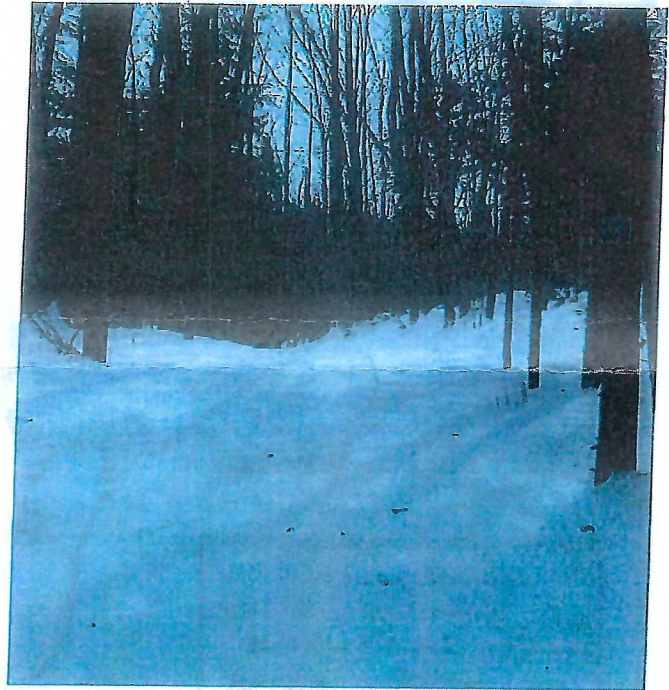
The Drummond Ski Trail is located south of Drummond, WI about one mile. From US HWY 63 in Drummond, go south on Lake Owen Scenic Drive (FR 213) about 1 mile. Turn left onto access road into parking area.

## Seasons

The ski trails are usually groomed when snow conditions warrant and grooming usually starts in December through mid-March. The best snow conditions are in January and February.

The sections of trail utilized as a part of the CAMBA Mountain Bike Trail System begins once the annual trail closure order is lifted in mid-May. This is dependent upon the conditions within the trail tread.

The North Country National Scenic Trail is open to hiking, skiing, and snowshoeing year round. Mountain bikes may use the trail once the trail closure order ends in mid-May.



*"Every mile is two in the winter."  
- George Herbert*

## Trail Descriptions

**Antler:** A .9 km trail that connects Jack Rabbit, Antler Chute, & Boulevard Trails. (Level: More Difficult)

**Antler Chute:** A .4 km connector trail that provides a short cut from the Antler Trail to the west side of the Jack Rabbit Trail. (Level: Easier)

**Boulevard:** This 3.1 km trails acts as the main connection to all the trails in this system. (Level: Easier)

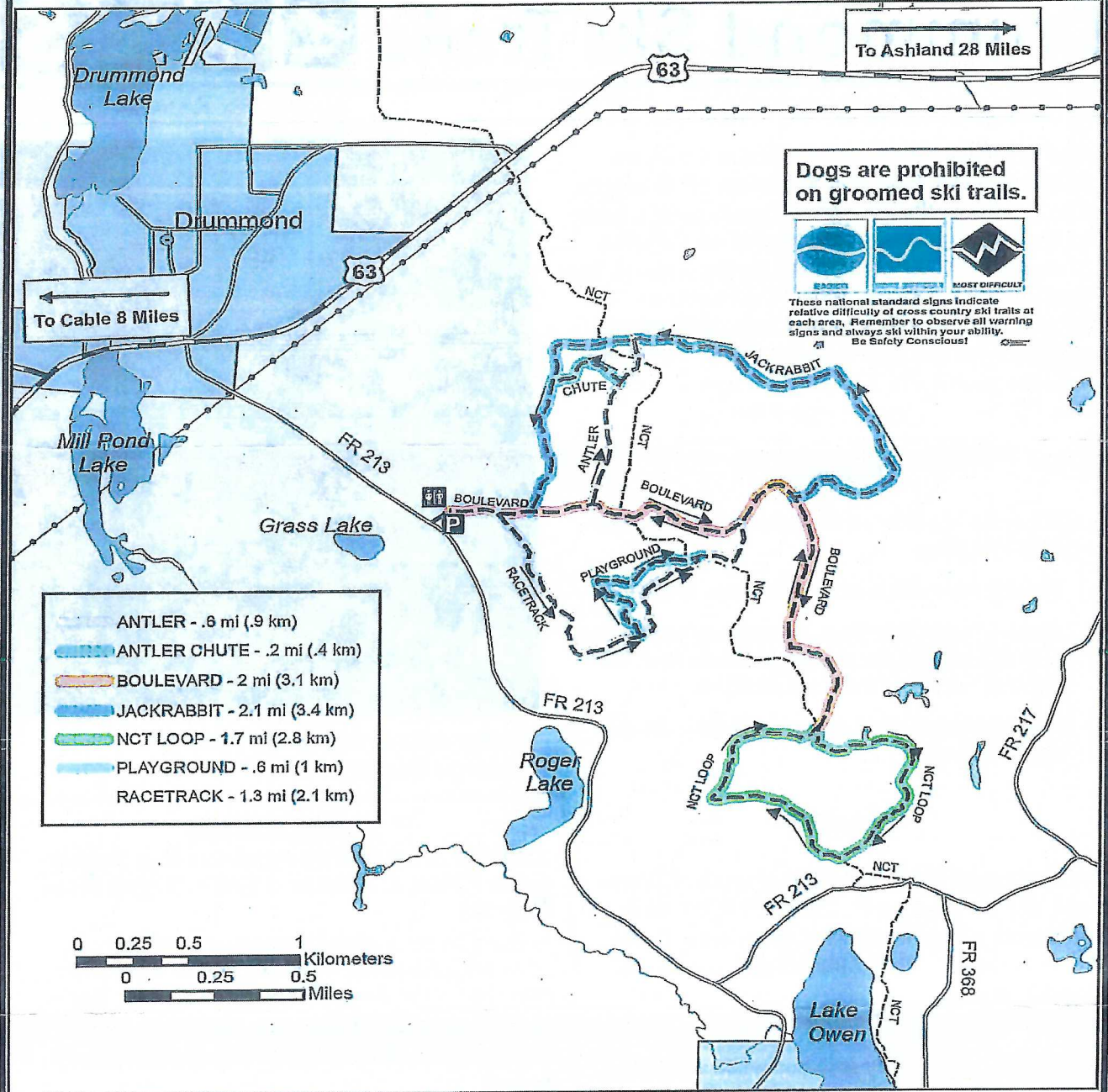
**Jack Rabbit:** A winding 3.4 km section of trail. (Level: Easier)

**NCT Loop:** This 2.8 km more uphill trail uses portions of the North Country Scenic Trail. There's a great vista at "Sally's Overlook". (Level: More Difficult)

**Playground:** This 1 km trail off of the Racetrack trail has more rolling terrain. (Level: More Difficult)

**Racetrack:** This 2.1 km trail has rolling terrain. (Level: More Difficult)

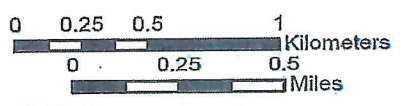
# Drummond Ski Trail



- ANTLER - .6 mi (.9 km)
- ANTLER CHUTE - .2 mi (.4 km)
- BOULEVARD - 2 mi (3.1 km)
- JACKRABBIT - 2.1 mi (3.4 km)
- NCT LOOP - 1.7 mi (2.8 km)
- PLAYGROUND - .6 mi (1 km)
- RACETRACK - 1.3 mi (2.1 km)

**Dogs are prohibited on groomed ski trails.**

These national standard signs indicate relative difficulty of cross country ski trails at each area. Remember to observe all warning signs and always ski within your ability. Be Safety Conscious!



- City
- U.S. Highway
- North Country Trail
- Lakes
- Parking
- Major Roads
- Powerline
- Restrooms
- Ski Trail
- Rivers & Streams

**Washburn Ranger District**  
 P.O. Box 578  
 Washburn, WI 54891

**Need more information?**  
 on the web at:  
[www.fs.usda.gov/cnnf](http://www.fs.usda.gov/cnnf)



USDA is an equal opportunity provider and employer

