

KUBOTA Texture Tools Earth In Detail



89mile

This earthy cement-like texture will add a cool blue-green tone with orange flecks to your images.



Before

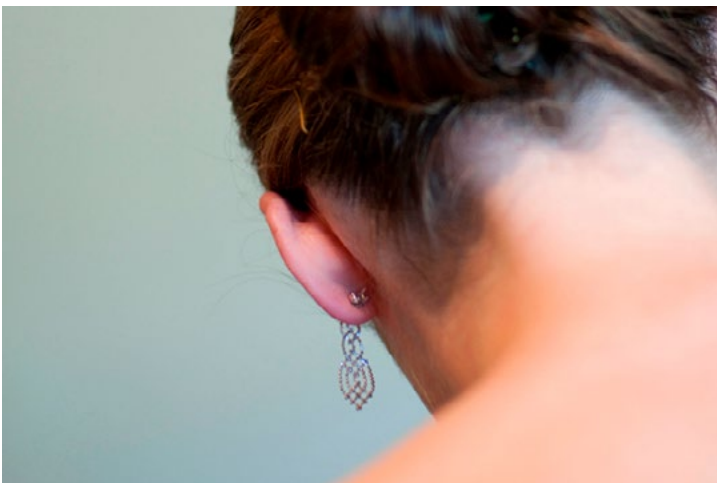


After



Achutupo

This light earthy texture is warm, smooth and subtle.



Before



After



Bambi

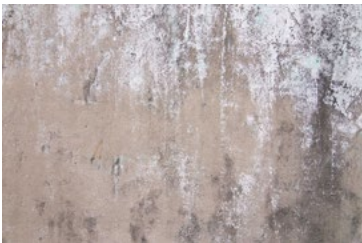
This cool earthy texture is cool with warm accents, modern, smooth and great for commercial or senior photography.



Before



After



Berba

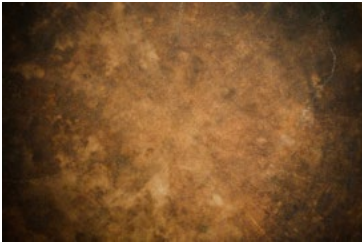
Cool, edgy earth texture with warm accents and heavy lines in the texture.



Before



After



Buj

This earth texture is very warm in the middle and darkens around the edges.



Before



After



Calm

Very cool earth texture in blue and white tones and lens flare from top left.



Before



After



CheapTP

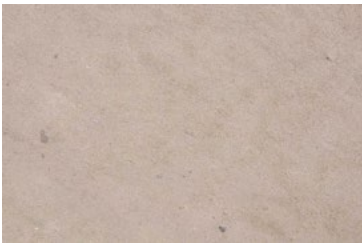
A warm earth texture that is light, smooth and classic.



Before



After



Colone

This like sand earth texture is simple, clean and warm in tone.



Before



After



Congo

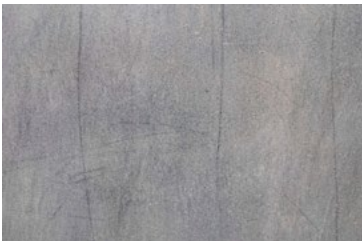
This heavy yet edgy earth texture is very warm and darkens around the edges.



Before



After



Crete

This earth texture is cool in tone and adds some hard scratches along with a strong texture.



Before



After



David

This heavy earth texture is cool in tone, with some warm brush strokes and rough letters.



Before



After



Dee

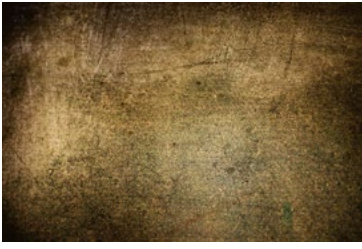
A very warm earth texture with hard scratches in vertical and circular patterns.



Before



After



DirtyShoe

This muddy toned heavy earth texture is warm with deep grooves and scratches.



Before



After



FincoBlaco

A very simple, clean earth texture will add cool tones and slight texture to your images.



Before



After



Gallium

This stone like earth texture is a mix of warm and cool tones with hard lines and slight cracking.



Before



After



Guabito

This cool, light earth texture is spotted with light and dark gray areas.



Before



After



Headlight

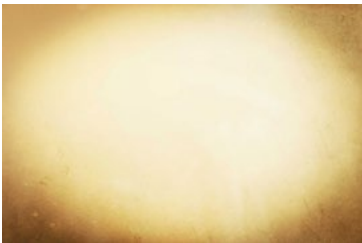
A smooth, light earth texture with cool tones and light scratches.



Before



After



Holgish

This lightly scratched earth texture has a warm glow with burnt edges to brighten the focal point of your shot.



Before



After



Holgisher

A very smooth earth texture with cool neutral tones.



Before



After



Horconcitos

A very rough earth texture that is cement like with heavy scratches and cool tones.



Before



After



Icanti

This cool toned earth texture is heavy with hard lines and depth.



Before



After



Juno



Before



After



Kigali



Before



After



Kivu



Before



After



Kusapin



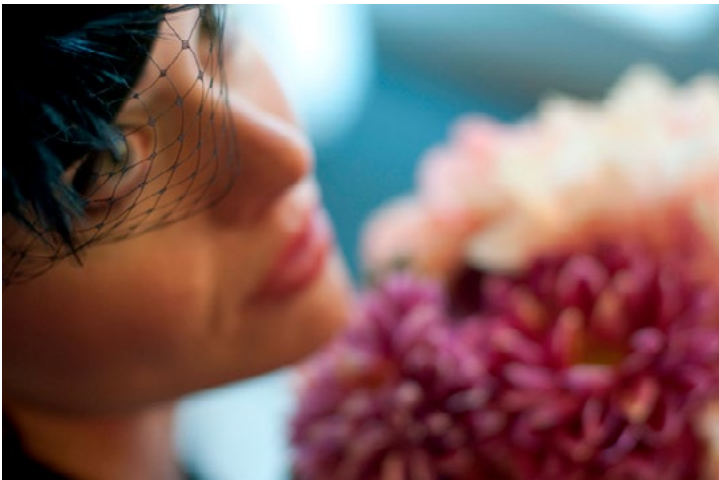
Before



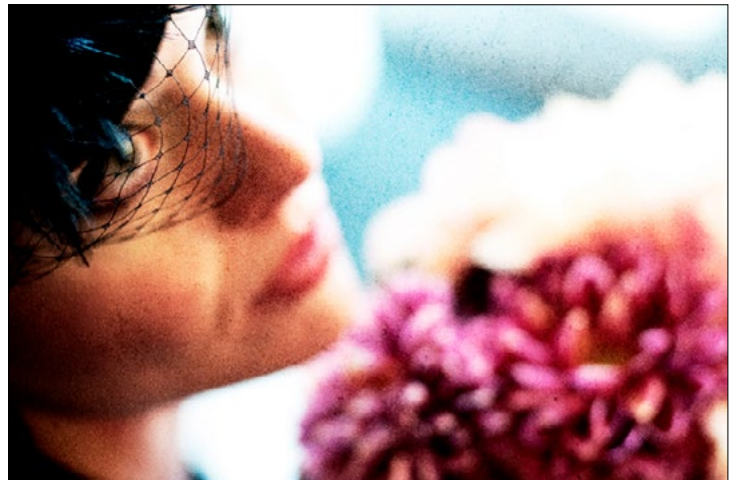
After



LaMata



Before



After



Matimba



Before



After



Morti



Before



After



Night



Before



After



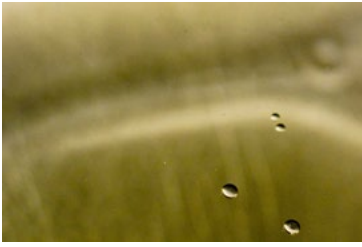
NuevaGorgona



Before



After



Olive



Before



After



Orangejuice



Before



After



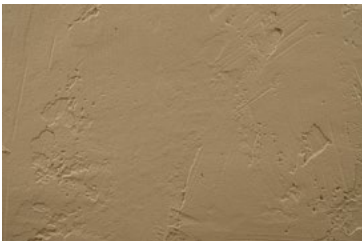
Parita



Before



After



Plastered



Before



After



Rio



Before



After



Sabanitas



Before



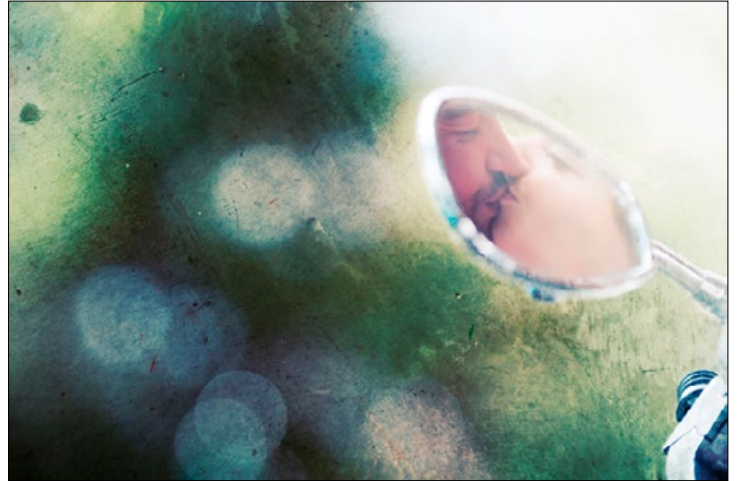
After



Satellite



Before



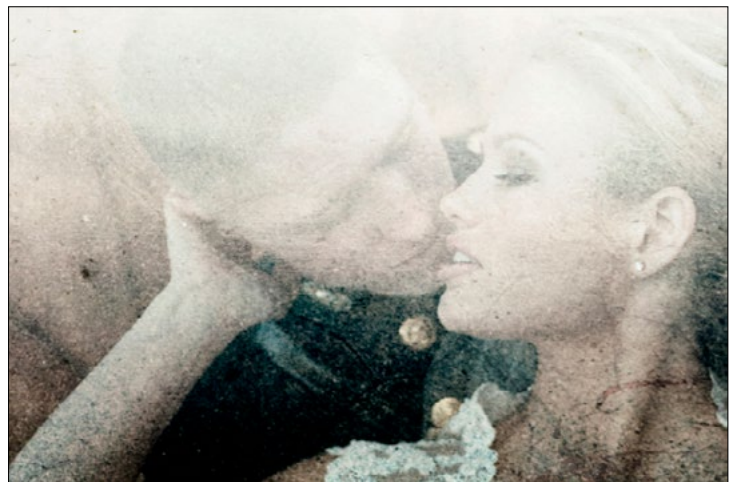
After



Shift



Before



After



Shotted



Before



After



Simmer



Before



After



Stan



Before



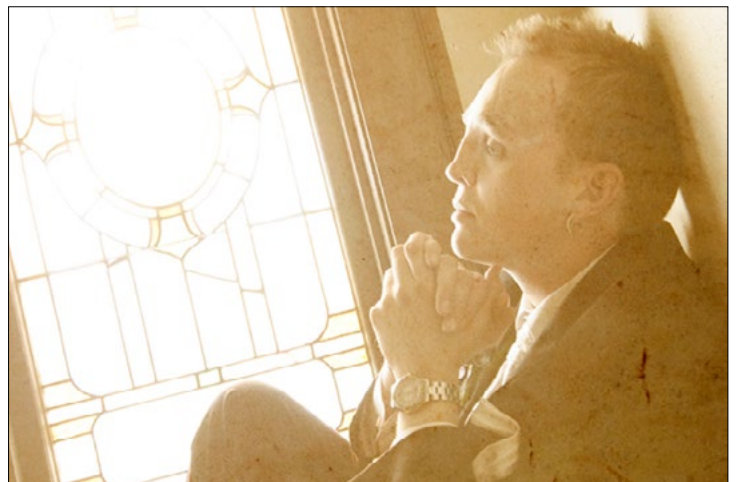
After



Tocumen



Before



After



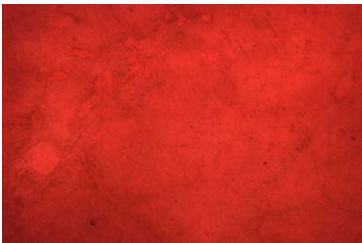
Ustupo



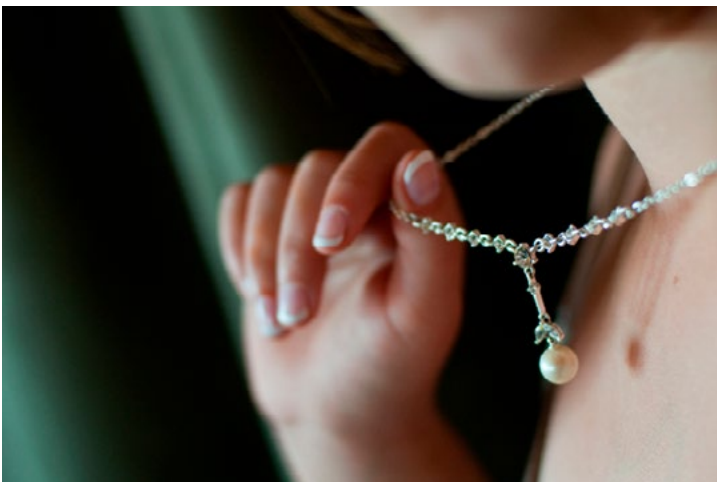
Before



After



Valentine



Before



After



Venitian



Before



After



Wash



Before



After



Watt



Before



After



Xray



Before



After



Yaviza



Before



After



Yetti



Before



After