

KUBOTA Artistic Tools V4 In Detail

Black & White Effects

BW Full Moon

A neutral B&W conversion that is full of snap and deep blacks. Try it, you'll like it!



Before



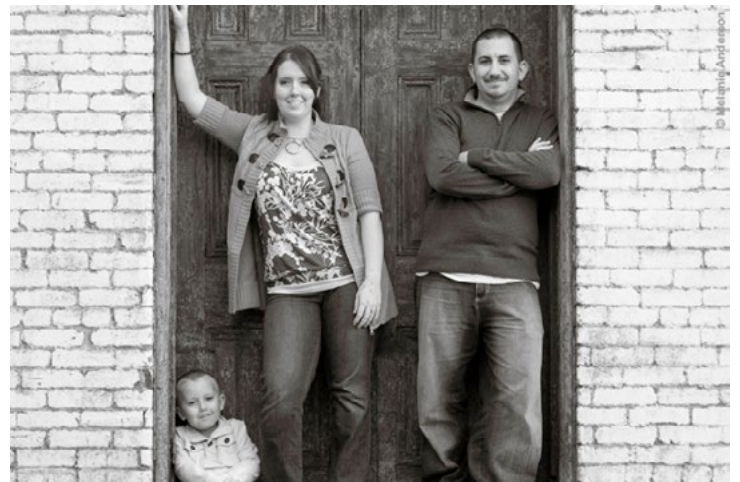
After

BW Interactor

A B&W conversion allowing fine tuning of the tonality of different colors prior to conversion. Click on the image on a color you want to adjust, and drag your mouse left or right to lighten or darken.



Before



After



Black & White Effects

BW Interactor The Edge

Similar to BW Interactor, but has an edgy boldness. Click on the image on a color you want to adjust, and drag your mouse left or right to lighten or darken.



Before



After

BW Interactor The Edge 50

A B&W conversion that will allow you to fine tune the tonality of different colors prior to conversion. Has an edgy boldness. Reduced intensity from the standard version.



Before



After



Black & White Effects

BW Modern

A B&W conversion with a slight infrared-ish feel. Neutral shadows.



Before



After

BW Modern Warm Deep

A great new B&W conversion with a slight infrared-ish feel and warm shadows.



Before



After



Black & White Effects

BW Modern with Edge

A B&W conversion with a slight infrared-ish feel AND an underlying edginess that gives it bite. Grrr.



Before



After

Fade To Black and White

Is it B&W? You decide. An ever so subtle hint of color makes you wonder...do your eyes deceive you? Look long and hard and contemplate the meaning of life.



Before



After



300esque

A warm, perpetual sunset and soft film grain.



Before



After

Ancient

Imagine a painting of an old renaissance castle, hundreds of years old. Try this on your fine art and landscape images. Maybe an old church in Italy?



Before



After



Bleacher

For those creamy skin tones that nearly blow out. Looks great on high-key backdrops. Keeps shadows and contrast.



Before



After

Blue Dawn

A risqué color palette. Cool in the shadows, warm in the mids, bold and punchy. Try it for a fashion edge or modern moodiness.



Before



After



Blue Dawn Leonidas

A risqué color palette. Cool in the shadows, warm in the mids, bold and punchy. Try it for a fashion edge or modern moodiness. More painterly feel, like the movie.



Before



After

China Doll

Porcelain like skin tones and overall midtone brightening.



Before



After



China Doll Smooth

Porcelain like skin tones and overall midtone brightening. Also adds soft smoothing - excellent for skin.



Before



After

Comic Relief

This is just for fun!



Before



After



Creamsickle

A lighter, soft and creamy effect. You just gotta try it. Non-staining formula.



Before



After

Dragon Princess

Bold and 3-dimensional like the original Enter the Dragon, but with a soft glowiness suitable for a Princess.



Before



After



Dragon Queen

Bold and 3-dimensional like the original Enter the Dragon, but with a soft glowiness suitable for a Queen.



Before



After

Edge Downer

A simple tool to darken the edges evenly in a rectangular shape. Different from an oval vignette.



Before



After



Enter the Dragon

Bam! An illuminant, three-dimensional, edgy, bold, and powerful round-house kick to the head. Use on images with lots of texture and detail, then stand back and feel the Dragon.



Before



After

Enter the Dragon - Old World Color

The bold 3-dimensionality of Enter the Dragon, but with an antique color palette. Gives your images a timeless feel with a modern edge.



Before



After



Enter the Dragon - Smooth Bold 1

3-dimensional and bold with a surreal smoothness to it. Almost a painterly feel, but not quite. Use it on daring people pictures to smooth skin.



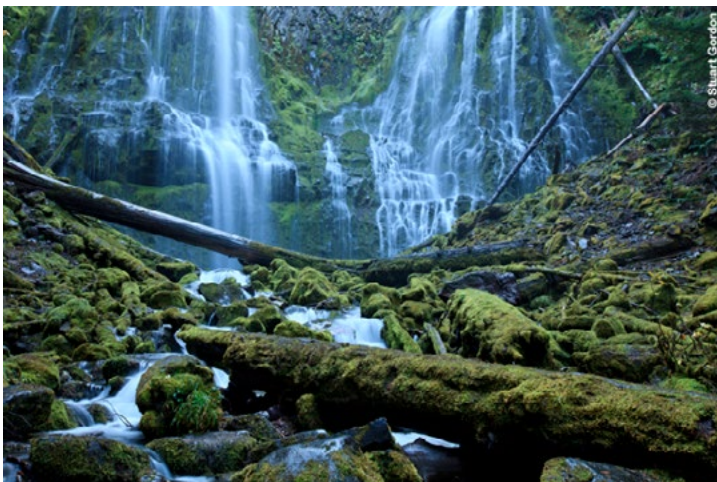
Before



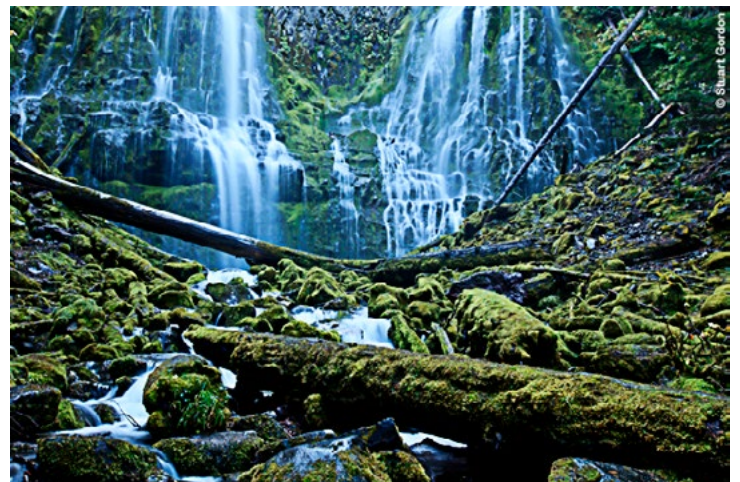
After

Enter the Dragon - Smooth Bold 2

3-dimensional and bold with a surreal smoothness to it. Almost a painterly feel, but not quite. Use it on daring people pictures to smooth skin. Stronger than 1.



Before



After



Enter the Dragons Lair

Like Enter the Dragon - but darker and more dramatic. Edges have vignette and texture. Bruce Lee would hide in here while fighting Chuck Norris. Bruce would win.



Before



After

Fudgesickle

Hard to explain, but rich, bold and soft at the same time. Shadows seem to become like rain clouds, but without the thunder and lightning.



Before



After



Icing

Smooth and slightly soft, with a gentle contrast punch. Zero calories too.



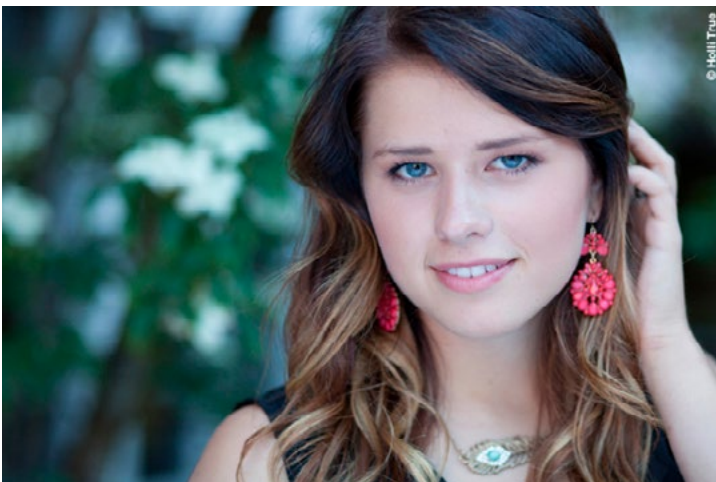
Before



After

KevKolor

A different color palette that is somewhat antique, yet bold at the same time.



Before



After



Krypto Glasses

Dramatic transformation. Bold vignette. Bold Color. Diffused edges. Like looking through your super hero helmet at a gothic city.



Before



After

MyEdge

A bolder version of The Edge. Make it yours.



Before



After



Patina

A very unique color palette that is impressionistic more than realistic. Use this when you are really searching for something out of the ordinary.



Before



After

PopSickle

Looking for a little pop? See your details come to life.



Before



After



PopSickle 2

A stronger variant of PopSickle. See your details REALLY come to life.



Before



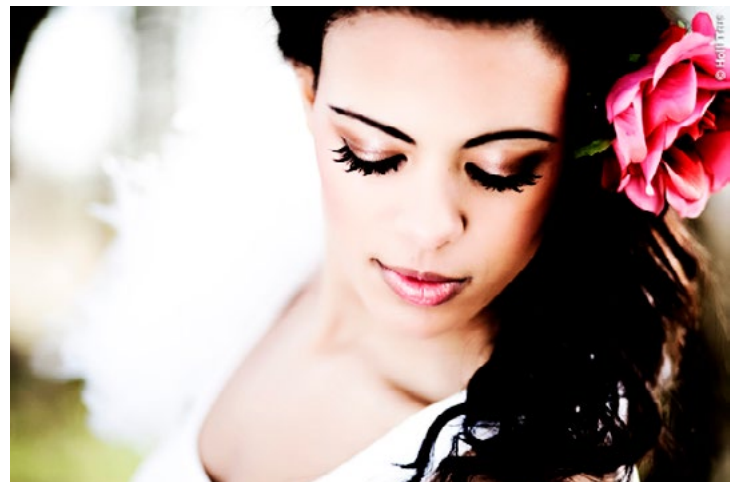
After

Prehistoric

Even older than the Ancient action, this is edgy and bold. Not for the faint at heart or those seeking normality. Look out for T. rex.



Before



After



Selective Focus

An interactive Action that emulates focus fading in then out. Will require closing the Action Dashboard to complete. Simply drag a line from sharp to blur.



Before



After

Sweeny Todd

Moody with the feel of walking through an old London town in winter. Faded color palette.



Before



After



TechyKolor

A color palette that reminds us of the old days. A film like quality that never goes out of style.



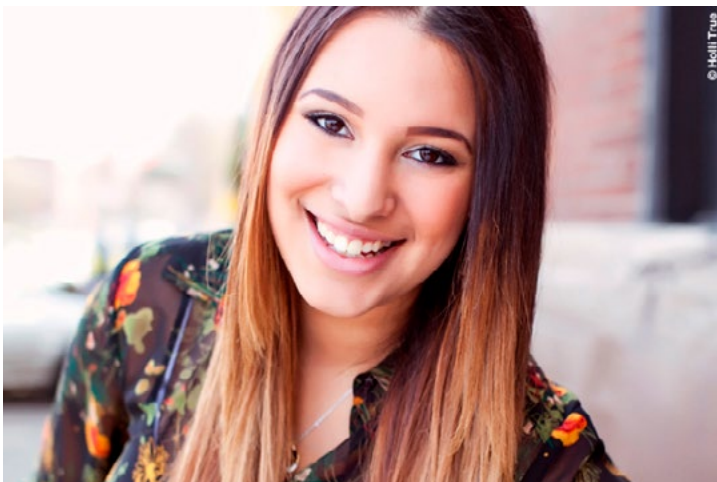
Before



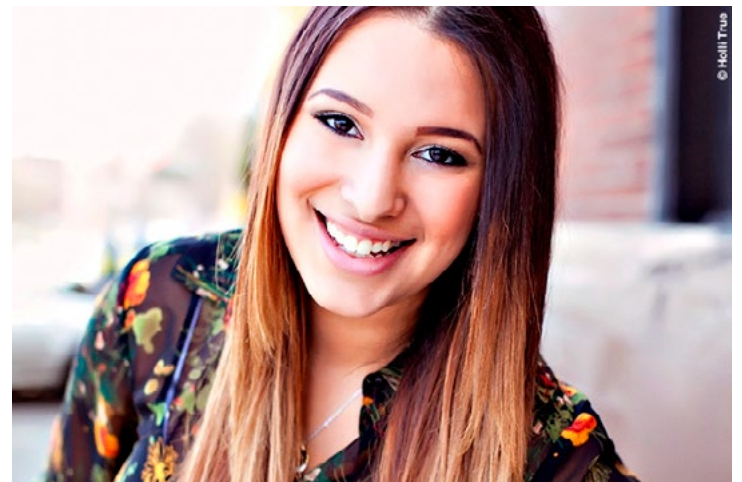
After

TheEdge

Enhances details and removes haziness from the image. You may find you like this as a starter Action for all your images.



Before



After



Try a Little Tenderness

Do you feel like you just need something soft and romantic? A little dreamy perhaps? Then try a little tenderness. Works on spouses especially well.



Before



After



Image Correction

Contrast Brush

Use it to paint contrast only to areas that need a little oomph. Try it on hair and important details of an image to make them more prominent.



Before



After

Dark Darkener

Paint over areas that need to be darker. Won't affect midtones and highlights. Great for eyeliner and those dark lines around the iris of the eye. What do you call those anyway?



Before



After



Image Correction

Highlight Enhancer

Use this when your highlights just aren't the highlight of your day. Paint where you want to make them shine.



Before



After

Highlight Rescue

This will help bring back highlights that are a bit gone. It won't put detail where there is none, so don't expect miracles - only magic.



Before



After



Image Correction

Interactive Color Luminizer

Allows you to interactively lighten or darken select color ranges in a color image. Inspired by Lightroom's cool Luminance adjustment.



Before



After

Luminizer

Take a deep breath! Opens the shadows and provides overall illumination. Affects primarily the midtones and shadows.



Before



After



Edges & Vignettes

Fibrous Edges

An edge texture that can add a more antique feel. Try it with a vignette for more drama.



Before



After

NEW Starburst Vignette Auto

Similar to our Starburst Vignette in V2, but this has more “points” for more internal image area and automatically sizes to the full border of your image.



Before



After



NEW StarBurst Vignette Interactive

Similar to our Starburst Vignette in V2, but this has more “points” for more internal image area. Allows you to adjust the shape.



Before



After

Pebbled Edges

An edge texture that can add a more antique feel. Try it with a vignette for more drama.



Before



After



Ragged Edges

An edge texture that can add a more antique feel. Try it with a vignette for more drama.



Before



After