

KUBOTA

Artistic Tools V3 In Detail

Black & White Effects

Black Satin BW 1

A new, rich black and white conversion that tends to lighten the skin tones. It also adds a rich warmth in the shadows for a unique tonal quality.



Before



After

Black Satin BW 2

A variation on the above with less contrast for more shadow and highlight detail.



Before



After



Black & White Effects

Black Satin BW 3

A variation on the above with a slightly different color toning and similar contrast to Black Satin BW 2.



Before



After

Black Satin BW 4

Same color toning as above but with less highlight contrast.



Before



After



Black & White Effects

Bronzed God 1

A bronze like toning - not quite sepia, but rich and flavorful.



Before



After

Bronzed God 2

Like the above, but with less overall contrast.



Before



After



Black & White Effects

Bronzed God 3

Like the above again, but even less overall contrast.



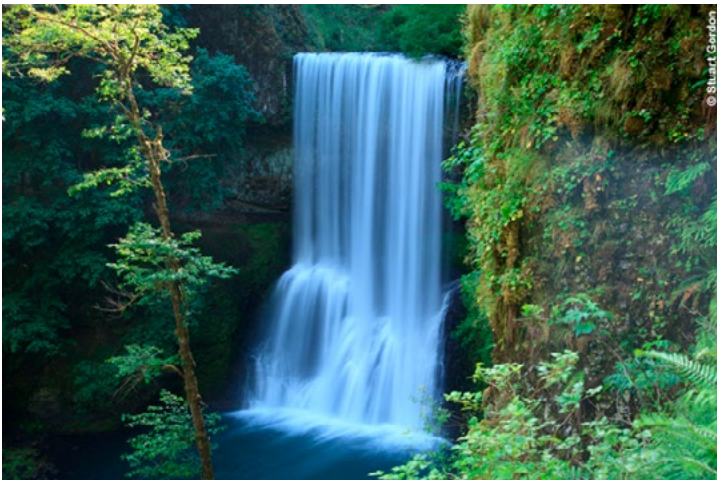
Before



After

Velveteen 48 and BW Satin

Combines Velveteen with the Black Satin BW look for a beautiful combo.



Before



After



Black & White Effects

Velveteen Sharper and BW Satin 2

Similar to the previous, but adds a separate layer above that restores some of the fine details at the expense of some of the soft feeling.



Before



After



Fashion Passion

For those that like cross-processed looks, but with less blue in the shadows and more pleasing skin tones than a traditional cross-processed effect.



Before



After

High Fidelity

Bright, intense, like golden sunshine. Edgy and vivid.



Before



After



High Fidelity Midlight

Like the above but opens up the shadows more.



Before



After

Hollywood Glow

Built after our popular Hollywood Intensity action in Artistic Tools V1. Hollywood Glow adds glowing softness to the original look. This bold coloring action is great for fashion looks and outdoor scenes. Don't forget you can fade the intensity of any action by simply reducing the opacity of it's layer set.



Before



After



Kiyoko Punch

A subtle, everyday type action that works great to enhance colors - especially blue skies. This was designed for a wedding client photographed in Hawaii and used on their complete set of images.



Before



After

Moulin Rouge

Punchy contrast and an old world color palette. Hints of oak and sandalwood with a smooth finish. Try with cheese.



Before



After



Moulin Rouge with Glow

As above but with a soft glow for more romance.



Before



After

Punch Lite

A light contrast and color enhancing tool that you may want to use everyday.



Before



After



Renaissance

A dramatic old world feel with more punch and contrast than Moulin Rouge.



Before



After

Rich Shadows

Sometimes you just want to richen things up a bit. This works primarily on the shadows, adding localized contrast and color boost. Great when an image feels hazy or lacking in overall contrast and richness.



Before



After



Super Heroine

High contrast, high key. Puts a soft wash on skin tones. Bold and sassy, like your favorite super heroine!



Before



After

Tea Stained

A soft, subtle color palette similar to what you might get from tea staining a print. All natural, no caffeine.



Before



After



The Look

Gentle enough to be used everyday, but adds that punch that makes images pop.



Before



After

The Look with Smooth

Same as The Look, but with skin smoothing as well.



Before



After



The Look 2

A variation on the color palette from The Look and more contrast.



Before



After

The Look 2 with Smooth

Same as The Look 2, but with skin smoothing as well.



Before



After



Velveteen 23

This is a rich color palette with shadows that diffuse over the highlights, similar to traditional darkroom diffusion where black netting is held under the enlarger lens. 23 indicates the intensity.



Before



After

Velveteen 23 Reduced

Same as Velveteen 23, but with reduced contrast.



Before



After



Velveteen 48

Stronger intensity of color than Velveteen 23.



Before



After

Velveteen 48 Reduced

Same as Velveteen 48, but with reduced contrast.



Before



After



Velveteen 65

Strong, bold, and moody.



Before



After

Velveteen Light

You may love it so much you want to use it everyday, so this is the basic version.



Before



After



Velveteen with Edge Dark

Similar to the other Velveteens, but adds an edge darkening for more drama, similar to a vignette but follows the frame edges more closely - not a circular vignetting pattern.



Before



After

Velveteen Adjuster

Simply sets you up on the proper layer to be able to reduce the opacity of the layer set so the effect can be fine tuned.



Before



After



Anime Soft

A unique, painterly look that simplifies the image and makes it look half painted, half photographic. This softer version has a more muted color palette.



Before



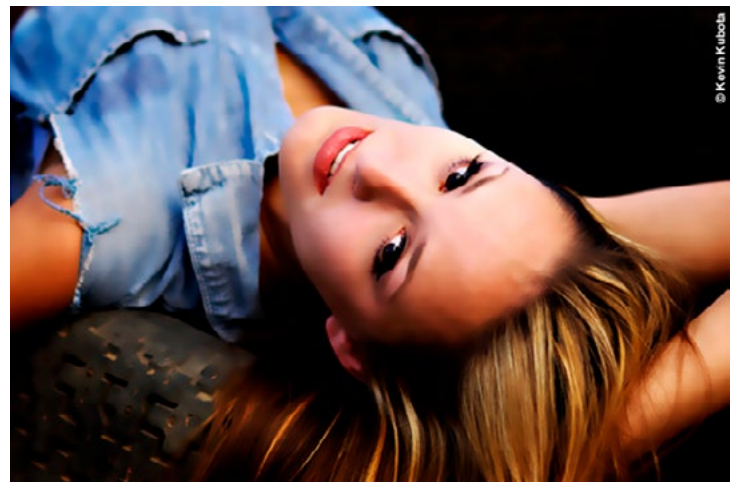
After

Anime Bold

A unique, painterly look that simplifies the image and makes it look half painted, half photographic. This bolder version has a more vivid color palette.



Before



After



Deep Forest

You want rich and moody? You got it. Only for the adventurous. Creates deep, rich colors and glowing shadows. Try this on your romantic portraits and scene setters.



Before



After

Glow Baby

Adds a beautiful, soft glow and enhances the color and contrast at the same time. Try this on children, graduates, or fashion images.



Before



After



Powder Soft

A nice overall softening with very little glow. Great for skin softening. Maintains contrast and clarity.



Before



After

Soft Wash

A bright, soft, high-key look. Try this with portraits on a white background for beautiful, modern looks.



Before



After



Wash Out

Very high key, contrasty. Get the over-exposed look without losing highlight detail.



© Alycia White

Before



© Alycia White

After



Image Correction

Dark Line Eraser

Use this to reduce the shadows under the eyes, for example. Requires the custom tool presets to be loaded. After running the action, start painting where you want to lighten. Painting over an area repeatedly will continue to lighten.



Before



After

Doll Face

A beautiful skin softening action. Does not add glowing. After running the action, paint over the skin to soften it. Paint repeatedly over the same area to increase the softening.



Before



After



Image Correction

Eye Color Enhancer

Bring the eyes to life! Simply run the action, then select a brush size that is just slightly smaller than the iris. Dab over it to bring out the color and make them shine.



Before



After

Simple Soft

A subtle everyday skin softener. Reduces the minor imperfections in skin. Does not glow.



Before



After



Image Correction

Skin Powder Genie

When you need cover girl smoothness, this is the ticket. It requires some manual painting, but it will set you all up. Simply run, then opt/alt-click on skin to sample the color. Then, start painting with large even strokes. Re-sample skin color as you move around to different tonal areas and continue to paint. The effect builds as you paint over the same area.



Before



After

Over X Helper Overall

This will help to restore highlight detail on a slightly over-exposed image. It also works well after using one of the other contrast enhancing actions when the highlights become too hot. Keep in mind that if highlight areas in the original image are severely over-exposed, nothing much can help that.



Before



After



Over X Helper Paint In

The same as above, but allows you to selectively paint over the areas where you want to restore highlights. Used when most of the image is fine, but certain areas need help.



Before



After



Image Borders

4x6 Blk Borders No Key

4x6 black border with no stroke.



Before



After

4x6 Blk Borders Wht Key

4x6 black border with a white stroke.



Before



After



Image Borders

4x6 Wht Borders Blk Key

4x6 white border with a black stroke



Before



After

4x6 Wht Borders No Key

4x6 white border with no stroke.



Before



After



Image Borders

5x7 Blk Borders Wht Key

5x7 black border with a white stroke.



Before



After

5x7 Blk Borders No Key

5x7 black border with no stroke.



Before



After



Image Borders

5x7 Wht Borders Blk Key

5x7 white border with a black stroke.



Before



After

5x7 Wht Borders No Key

5x7 white border with no stroke.



Before



After

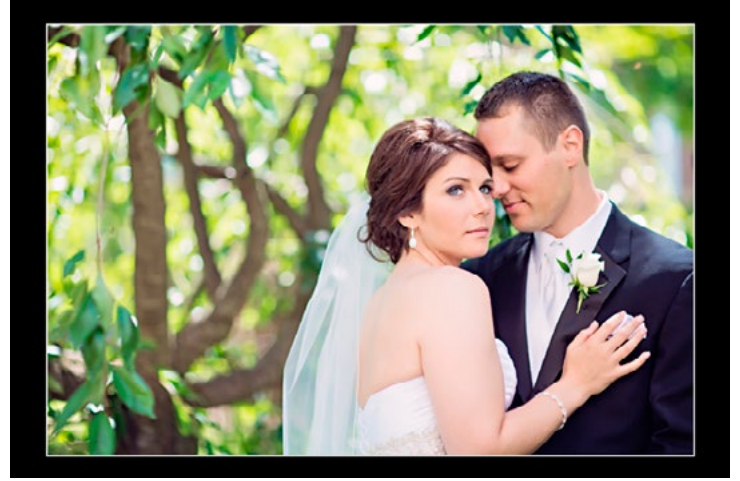


8x10 Blk Borders Wht Key

8x10 black border with a white stroke.



Before



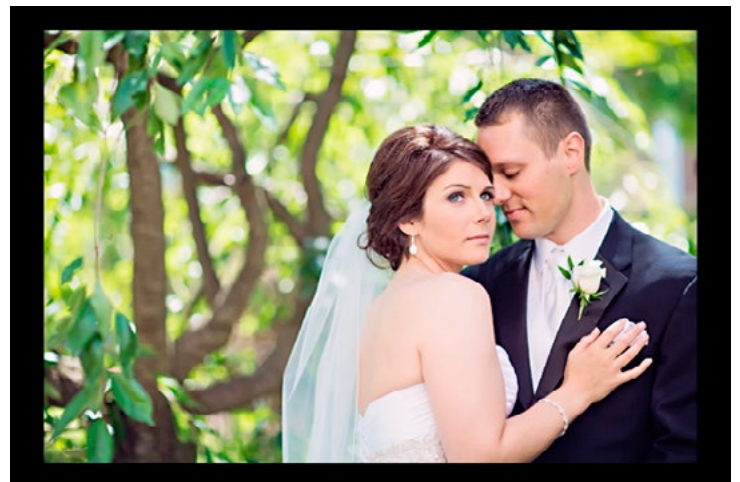
After

8x10 Blk Borders No Key

8x10 black border with no stroke.



Before



After



Image Borders

8x10 Wht Borders Blk Key

8x10 white border with a black stroke.



Before



After

8x10 Wht Borders No Key

8x10 white border with no stroke.



Before



After