

KUBOTA

Artistic Tools V2 In Detail

Black & White Effects

Deep Green

Green in the shadows.



Before



After

Deep Purple

Ahh, classic rock.



Before



After



Black & White Effects

Deep Red

Red in the shadows only.



Before



After

Hot Fudge 1

Yum. Love this. Nearly black and white, but with a richness that can only be compared to hot fudge.



Before



After



Black & White Effects

Hot Fudgier

When you really need a sugar fix. Warmer, fudgier.



Before



After

Hot Fudge with a Cherry

Not for the faint at heart, or those on a diet. This is similar to modern antique, but combines warm fudge tones with some enhanced color from the original color image.



Before



After



Black & White Effects

Mocha BW

Very close to a true black and white, but with deep rich shadows. Not noticeably brown, just rich.



Before



After

Modern Antique 1

Is it black and white, or is it color? It is a soft, lightly colored effect that gives an old, timeless feel to your image.



Before



After



Black & White Effects

Modern Antique 1 with Glow

Like Modern Antique 1, but with a romantic glow. Very old world feeling.



Before



After

Select A Toner

Overall monochromatic toning where you select any color you want on the fly.



Before



After



Black & White Effects

Shadow Select A Toner Heavier

More colorful version of above.



Before



After

Shadow Select A Toner Subtle

Similar to Select A Toner, but applies tone to the shadows primarily.



Before



After



Black & White Effects

Sing the Blues

Rich blue toning similar to Hot Fudge 1 — but in the shadows primarily. A very rich look.



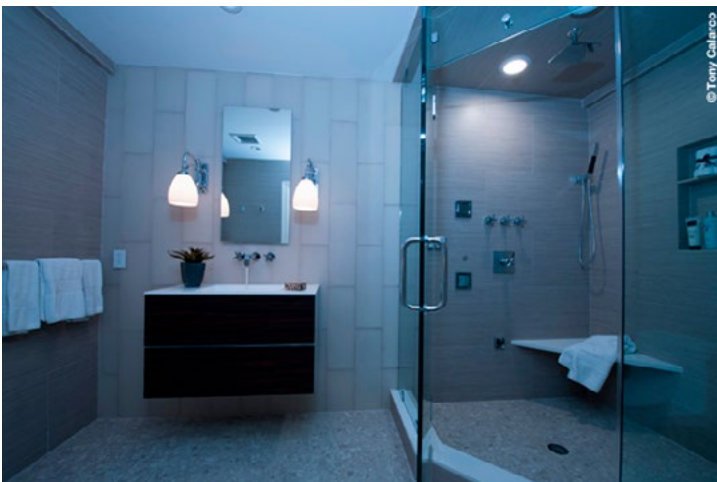
Before



After

Split Tone Blue and Warm

The opposite of the above — with blue in the shadows and warmth in the highlights.



Before



After



Black & White Effects

Split Tone Warm and Blue

Classic split toning with warmth in the shadows and cool blue in the highlights.



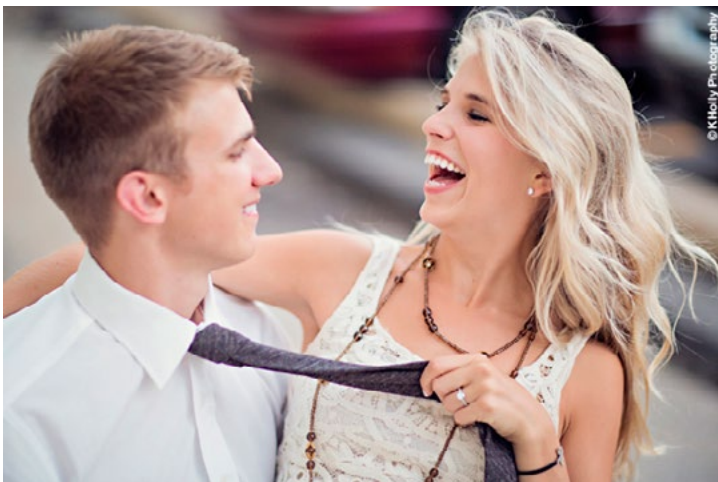
Before



After

The NEW BW

The closest thing to straight black and white you will find here. For those who want more of a traditional black and white look.



Before



After



Black & White Effects

The NEW BW Midbright

Same as The NEW BW, but with lightening in the midtones. Helps to brighten skin.



Before



After

ToneTime Blue 1

Cool blue monochromatic toning.



Before



After



Black & White Effects

ToneTime Blue 2

A more saturated blue toning.



Before



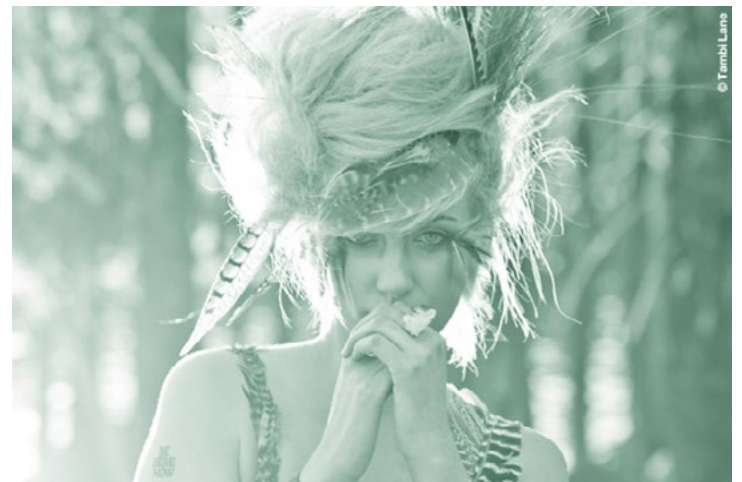
After

ToneTime Green 1

Green with envy?



Before



After



Black & White Effects

ToneTime Green 2

The color of money. Hey, what about doing a cool 4-up panel with each of the color tones — sorta Warhol-esque.



Before



After

ToneTime Red 1

You guessed it, red toning.



Before



After



Black & White Effects

ToneTime Red 2

More red.



Before



After



Daily Multi Vitamin

This is a subtle, but effective action for adding “Life” to everyday color images. Especially for digital images, it adds a localized contrast boost, overall color punch, and deepens blue skies. You may want to use it on all your images.



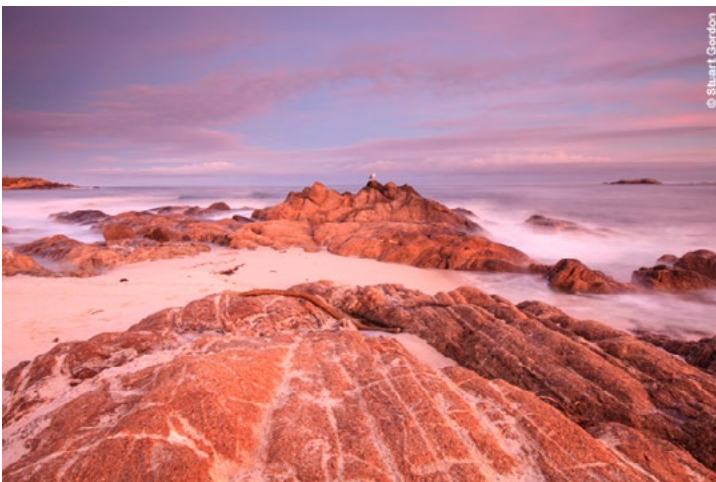
Before



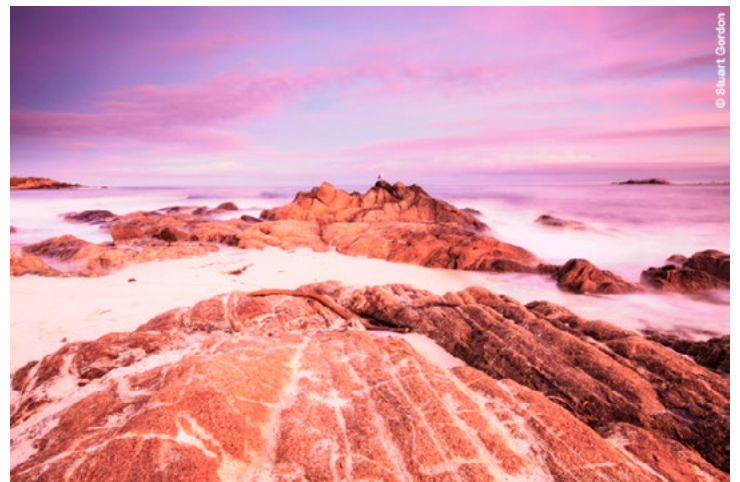
After

Hawaiian Punch

Bold, vivid, but no coconuts. This lively action will pop color and add a vivid tropical life to images. Try it on scenic images or environmental portraits.



Before



After



Lord of the Rings 2

This is the standard version of the Lord of the Rings actions. A classic, if I do say so myself.



Before



After

Lord of the Rings EVERYDAY

The Lord of the Rings series of actions is a popular creation that aims to mimic the deep, romantic feel of the movie. It adds color richness, a soft glowing effect, and contrast. This EVERYDAY version is light enough to use, well, everyday. A subtler version of the originals below.



Before



After



LOTR Return of the King

You want deep, rich, and mysterious? This is the king.



Before



After

LOTR Highlight Controller

Helps to reduce highlight burnout in LOTR actions. Although the soft, glowing highlights are part of the effect of the actions, sometimes the highlights might get too hot for your taste. Use this after running one of the LOTR actions to bring the highlights back down a bit.



Before



After



Radiance Landscape 1

One of our favorites for landscape or fine art images. Color boosting and vividness, without softening or glows.



Before



After

Radiance Landscape 2

A stronger version of the above.



Before



After



Radiant People

Based on our Radiance technique, this adds punch but is tuned to reduce over saturation of skin tones.



Before



After



Angel Glow

Ahh, the heavenly light glows the highlights only, to create an ethereal feel. Beautiful on brightly lit sunny days with lots of specular highlights.



Before



After

Edge Blur Modified

A cool effect with a gradual motion-like blur around the subject. It gently fades from clear at the subject center to blurred at the edges.



Before



After



Edge Blur More

A stronger version of the above.



Before



After

Edge Burner

Darkens just the edges evenly around the frame of the picture.



Before



After



StarBurst Vignette

This might sound cheesy, but really it is not. Sometimes you want the look of darkened edges via vignette, but don't want a predictable even circle shape. This creates a harder to detect star shape around the subject before darkening the edges. You cannot see the star shape in the final effect, but it is more natural looking than a circular vignette.



Before



After



8 Then 16 Then 8

This action will help to minimize or eliminate posterization problems in highly processed images. It is especially useful on JPG images, but also helpful to use on RAW files after they have had actions run on them. Use it as a final step just before sending an image to the lab or your printer.

Amazing Detail Finder

Help bring apparent sharpness back to your image. While nothing can create detail where there is none, this will create a darn good illusion of sharpness. After running the action, you will need to paint where you want the sharpness to appear. The effect builds up slowly, and can look edgy if taken too far. Paint a few strokes and look at it before painting more.



Before



After



Image Correction

Amazing Detail Finder 2

A stronger version of the above.



Before



After

Digital Fill Flash

Use it to lighten key areas of your image without washing out the shadows or blowing highlights. Simply run the action, then paint where you need light. Great for bringing attention to faces, lightening shadows on faces, or add depth to otherwise flatly lit images. You will wonder how you ever lived without it!



Before



After



Makeup Artist

Works only on skin tones. Creates a smooth, porcelain like skin texture.



Before



After

Mid Puller

Similar to mid bright, but slightly different. This one has a smoother tone transition from shadow to mids to highlight. It is hard to explain, so just try it!



Before



After



Image Correction

Midbright

Open up the midtones of an image without changing shadow or highlight information. Good to reveal mid-shadow detail or soften shadows around a face.



Before



After

Smarter Sharp with Edge Mask 1

Smarter Sharp makes a complex selection of the edges of your image first, thus allowing this cool sharpening tool to avoid enhancing noise and skin texture.



Before



After



Image Correction

Smokeless Burn

The opposite of Digital Fill, Smokeless Burn darkens areas where you paint. Great to add dramatic shadowing to sides of the face, minimizing unimportant details. Burn down edges of the photo to add depth and emphasis to the main subject.



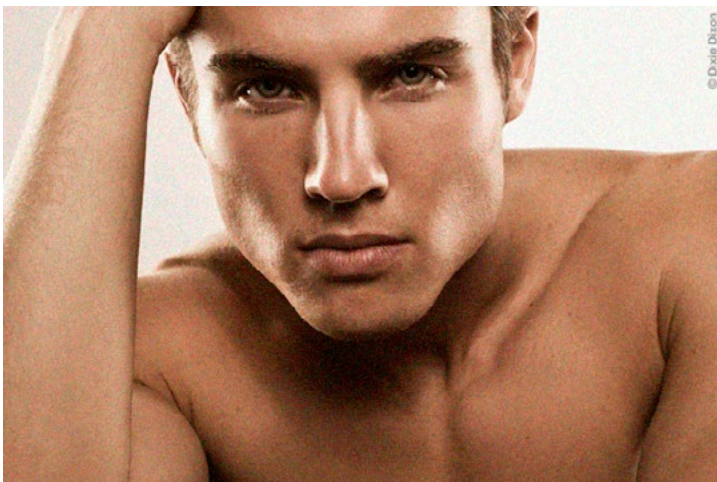
Before



After

Smoothen

Reduces noise and grain in an image. Smooths things out subtly overall.



Before

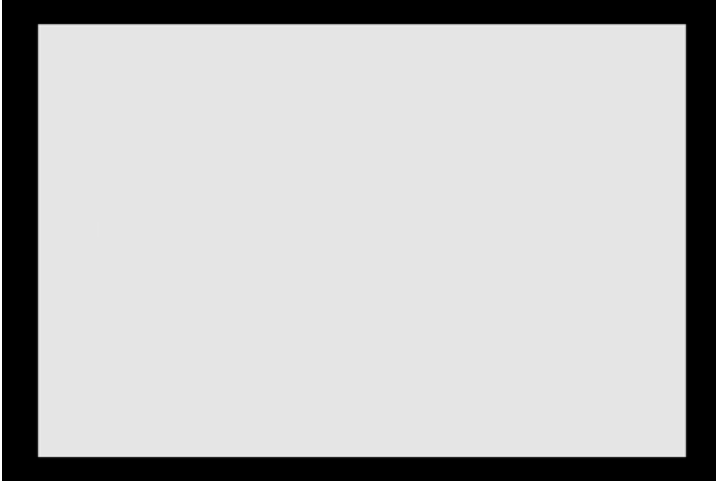


After



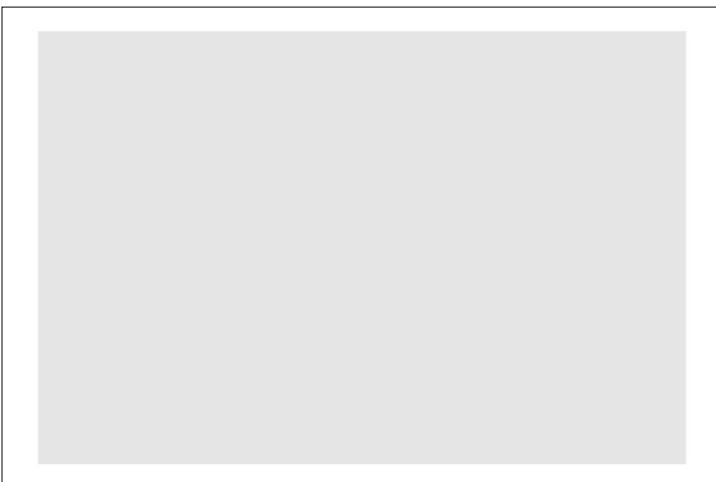
4x6 with Black Borders

Same, but with a black border.



4x6 with White Borders

Great for those who print proofs. Creates a 4x6 image at 300 dpi with a white border all around.





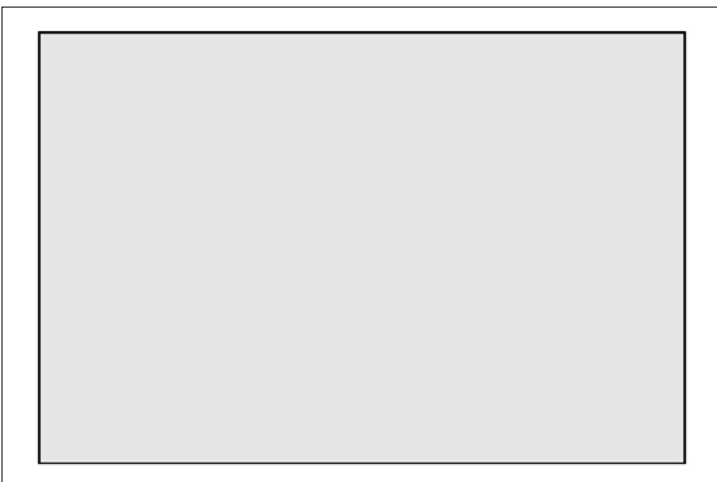
4x6 with Black Borders & White Keyline

Black borders and a thin white keyline around the image area.



4x6 with White Borders & Black Keyline

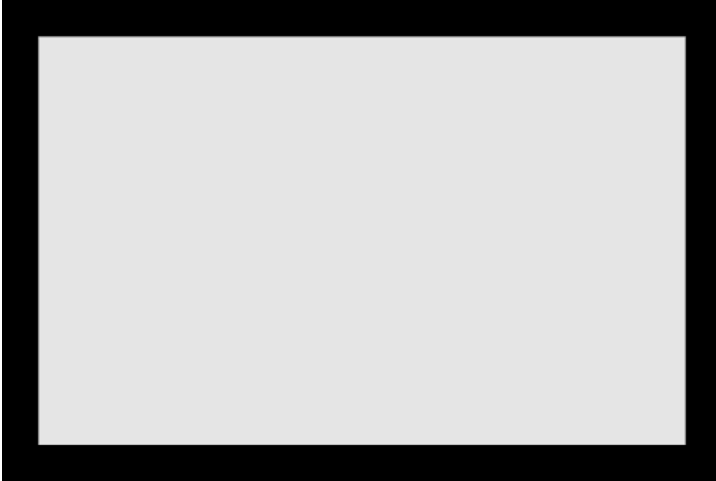
White borders and a thin black keyline around the image area.





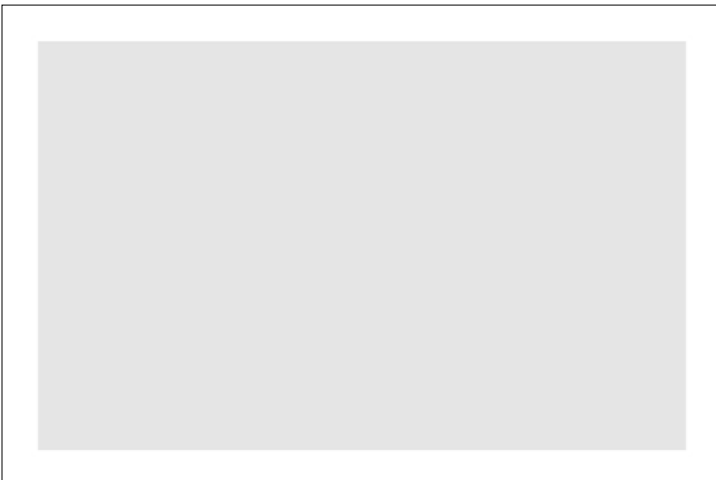
4x6 with EVEN Black Borders

Same as above with black borders.



4x6 with EVEN White Borders

Even borders all around. Note, however, that some cropping of the image on the long side is necessary to create even borders. It will crop automatically.





4x6 with EVEN Black Borders & White Keyline

You get the idea.



4x6 with EVEN White Borders & Black Keyline

Self-explanatory, don't ya think?

