

KUBOTA Artistic Tools V1 In Detail

Black & White Effects

BW 100 Red

Using the classic channel mixer formula. Light ethereal skin tones



Before



After

BW 100 Red Punchy

Using the classic channel mixer formula. Light ethereal skin tones. Added punch.



Before



After



Black & White Effects

BW Channel Mixer 70 20 10

Black and white conversion using a favorite and very secret formula.



Before



After

BW Channel Mixer 45 32 32

Black and white conversion using a favorite and very secret formula.



Before



After



Black & White Effects

BW Edgy

A fashion black and white look. More contrast, punch, and drama.



© Stuart Gordon

Before



© Stuart Gordon

After

BW Enriching Formula

Another formula to richen a black and white conversion.



© Vicki Traufer

Before



© Vicki Traufer

After



Black & White Effects

BW Film Filter Adjustment 2

A snappy B&W conversion with some grain.



Before



After

BW Glow Punchy

Similar to above but with more punch.



Before



After



Black & White Effects

BW GM Warm 1 and Snappy

One of our favorite B&W conversions. Slight warmth and punch.



Before



After

BW GM Warm 2 and Snappy

One of our favorite B&W conversions. More than version 1 in warmth and punch.



Before



After



Black & White Effects

BW InfraKey 1

Not exactly infrared, but a similarly enhanced black and white conversion.



Before



After

BW KK Secret Formula

Rich and dramatic, not for the conservative! Works nice where faces are well lit. Otherwise creates a feel of very dramatic lighting.



Before



After



Black & White Effects

BW KPZ Grainy Film

A high speed film effect with grain added.



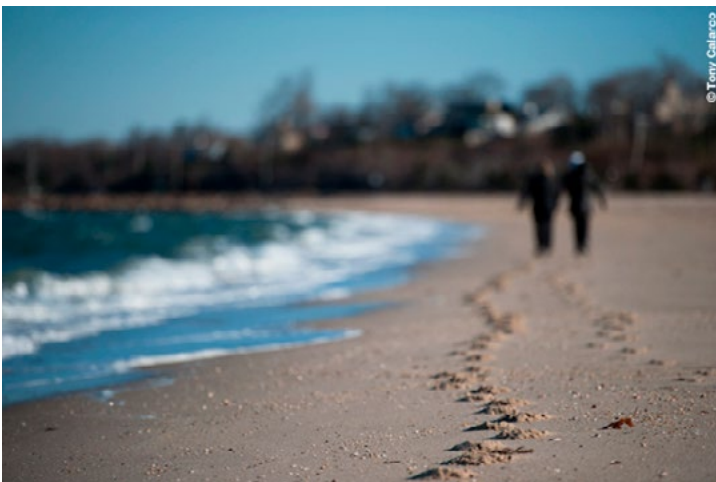
Before



After

BW KPZ 2 Gmap Grainy Film

High speed film effect using Gradient Mapping and grain added.



Before



After



Black & White Effects

BW Punchy Bump Grain ChaMix

A snappy B&W conversion with some grain.



Before



After

BW TastyGlow 2

Black and white with a glowing effect.



Before



After



Black & White Effects

BW via LAB

B&W conversion using the LAB color mode.



Before



After

BW via LAB with Color

Same as B&W via lab, but with the color layer added back for hand coloring effect.



Before



After



Black & White Effects

BW Warming Filter

Use this after a normal black and white conversion to add depth and slight warmth. Not enough color to be sepia, just a warmer, tastier black and white.



Before



After

Chocolate Syrup 1

Mmmmm, like a hot Mocha in the morning



Before



After



Black & White Effects

Chocolate Syrup 2

More, more, more!



Before



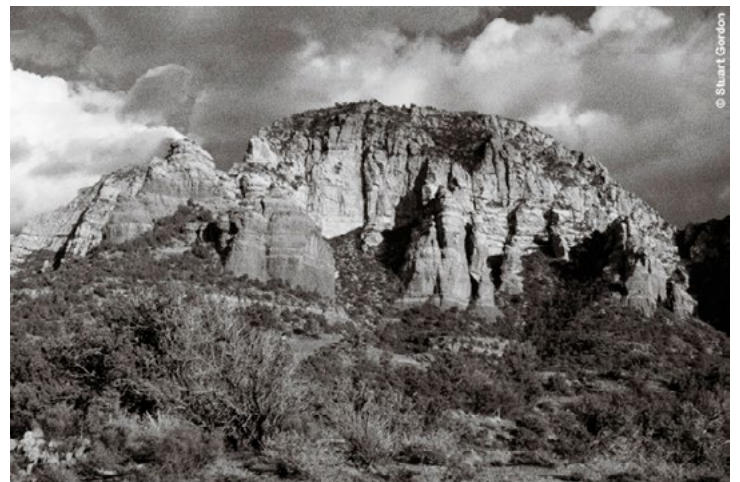
After

Grain 1 Slight

Film-like grain effect, Slight grain. Use after B&W effect



Before



After



Black & White Effects

Grain 2 More

Film-like grain effect. A bump more than slight grain. Use after B&W effect.



Before



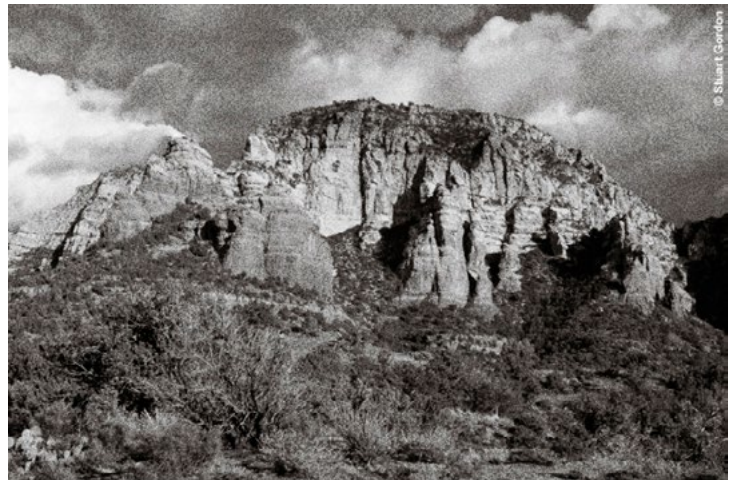
After

Grain 3 Heavier

Film-like grain effect. Mucho grain. Use after a B&W effect.



Before



After



Black & White Effects

Grain 4 Z Films

Film-like grain effect. Grain like the Z films. Use after a B&W effect.



Before



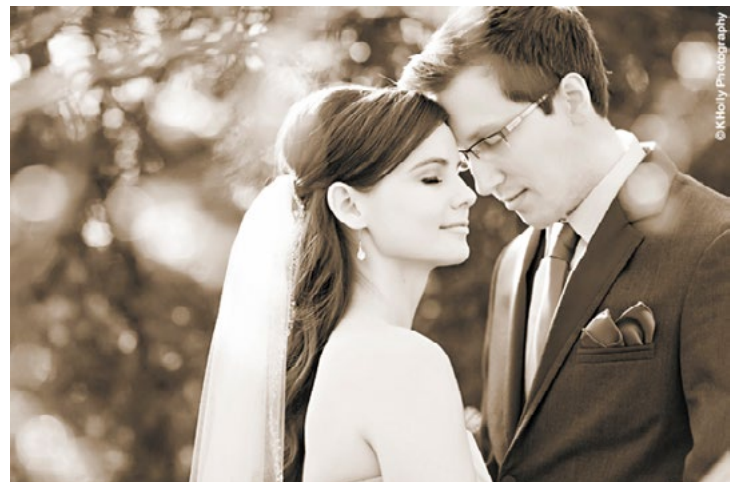
After

Sepia Deep Black 1

A sepia conversion that goes beyond the typical. Maintains true black in the deepest shadows and clean whites in the highlights. Avoids the muddy look of most sepia conversions. Rich and yummy.



Before



After



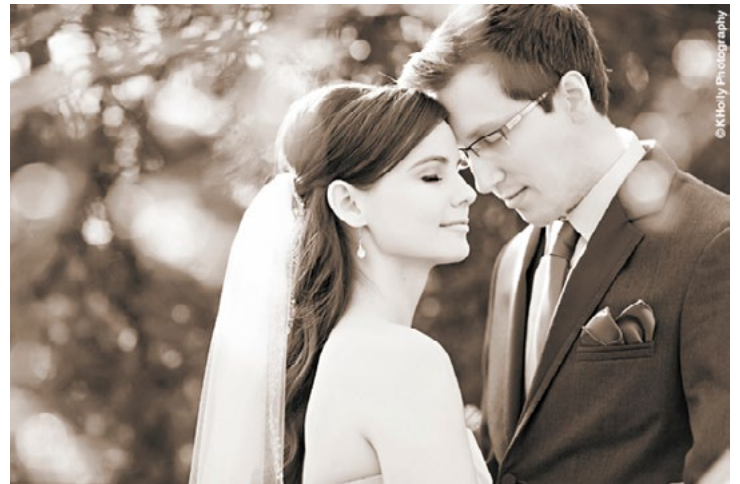
Black & White Effects

Sepia Deep Black 2

A tonal variation on the above.



Before



After

Sepia Deep Black 3

Another variation.



Before



After



Black & White Effects

Skin Cream 1

Run this BEFORE a B&W effect to brighten and smooth skin color. Works best on redder or ruddy skin tones. Not meant to be used on a color image.



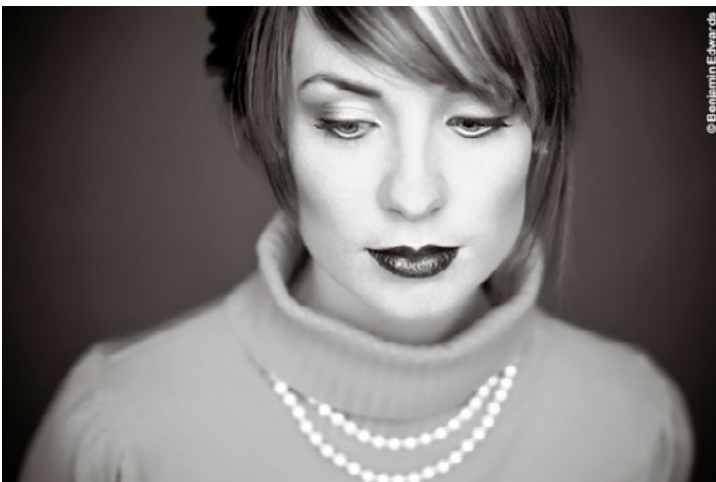
Before



After

Skin Cream 2

A more intense version of Skin Cream 1. Run this BEFORE a B&W effect to brighten and smooth skin color. Works best on redder or ruddy skin tones. Not meant to be used on a color image.



Before



After



Black & White Effects

Sub Grain Contrasty

Film-like grain effect. We've used proprietary techniques to give a more organic feel to images. Use after a B&W Action.



Before



After



Fuji snappit

Contrasty, enhanced color similar to Fuji's Velvia.



Before



After

Kev x-Process Combo

Variation on a classic fashion look: cross-processed film.



Before



After



KPD Hollywood Intensity

Nice color, deep and romantic, similar to Hollywood film technique of using black net over lens - but more color enhanced.



Before



After

Sunglow 2

A bright, sunny, glowing effect. Try it on outdoor natural light images with bright highlights.



Before



After



Color Effects

Sunglow 2 More

A softer version of above.



Before



After

x-Process I

Variation on a classic fashion look: cross-processed film.



Before



After



x-Process 2

Variation on a classic fashion look: cross-processed film.



Before



After



Kubota Darker GlowSoft

The above gives a beautiful romantic effect. Try other variations to see what you like best for each image.



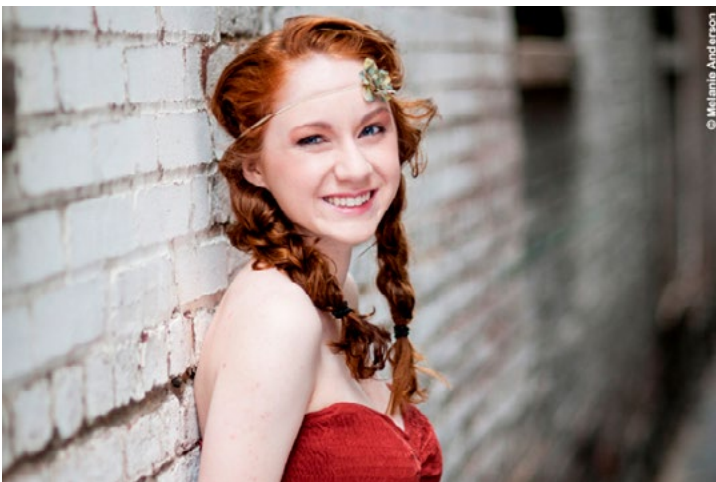
Before



After

Kubota Light GlowSoft

The above gives a beautiful romantic effect. Try other variations to see what you like best for each image.



Before



After



Kubota Light GlowSoft Highlights

The above gives a beautiful romantic effect. Try other variations to see what you like best for each image.



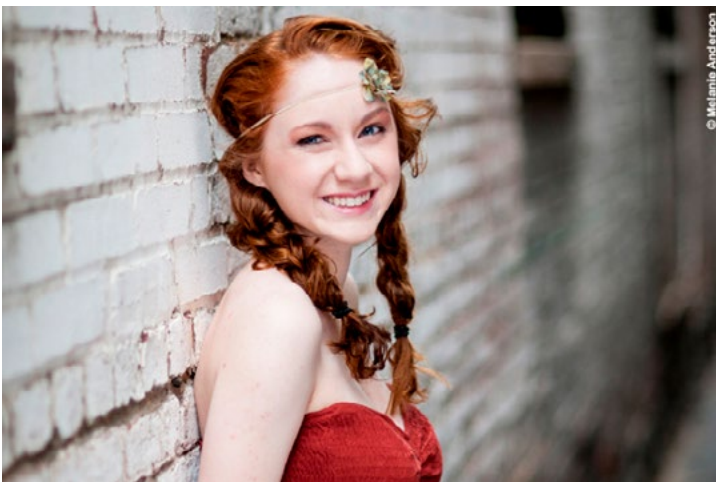
Before



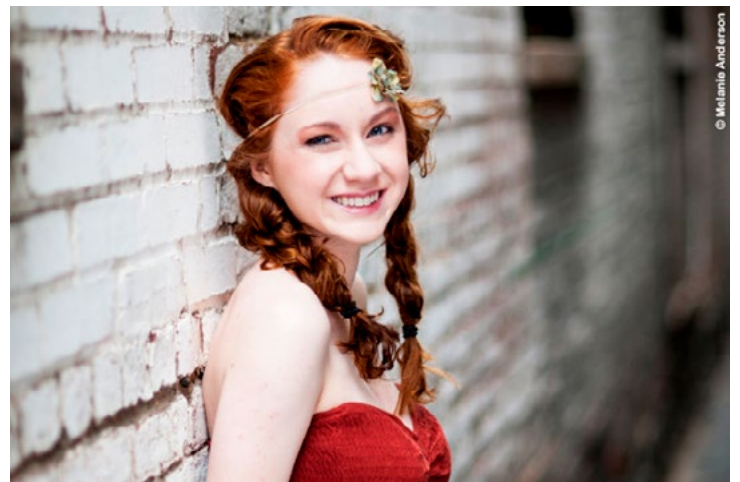
After

Kubota Light GlowSoft Vibrant

The above gives a beautiful romantic effect. Try other variations to see what you like best for each image.



Before



After



Vibrant Glow

Vibrant, radiant color and a subtle glow.



Before



After

Vignette

One of our most used actions. Simple but highly effective. Program an F key for this one!



Before



After



Image Correction

81K Warming

Simple but useful warming gel filters. Add a little mood to a cool image.



Before



After

82K Warming

Simple but useful warming gel filters. Add a little mood to a cool image.



Before



After



Image Correction

Backlight Compensation 1x

Raises the shadow values without affecting the highlights as much. Try it on backlit photos with slightly under-exposed foregrounds.



Before



After

Backlight Compensation 2x

Stronger version of above



Before



After



Tungsten to Daylight Filter

Improves images shot with the wrong white balance settings.



Before



After

Eyes and Teeth Enhance

Creates layers pre-set for retouching the eyes and teeth. Use for lightening eye whites & teeth and for removing red/yellow from eyes and teeth. Also use for an "eye-liner" effect to enhance lashes and eyebrows. Instructions will display when run.



Before



After



Image Correction

KPD Midbright

A very useful midtone brightener. Works surprisingly well on many images.



Before



After

Too Blue Tungsten Daylight 1

Improves images shot with the wrong white balance settings. Note, however, that each camera and each scene, and different settings will give different variations in the white balance error, so the action may need some tweaking for your particular images. It should get you in the ballpark though.



Before



After



Image Correction

Too Blue Tungsten Daylight 2

Improves images shot with the wrong white balance settings. Note, however, that each camera and each scene, and different settings will give different variations in the white balance error, so the action may need some tweaking for your particular images. It should get you in the ballpark though.



Before



After

Too Warm Daylight Tungsten 1

Improves images shot with the wrong white balance settings. Note, however, that each camera and each scene, and different settings will give different variations in the white balance error, so the action may need some tweaking for your particular images. It should get you in the ballpark though.



Before



After



Image Correction

Too Warm Daylight Tungsten 2

Improves images shot with the wrong white balance settings. Note, however, that each camera and each scene, and different settings will give different variations in the white balance error, so the action may need some tweaking for your particular images. It should get you in the ballpark though.



Before



After

VPS It

Lower contrast and color saturation for portraits.



Before



After