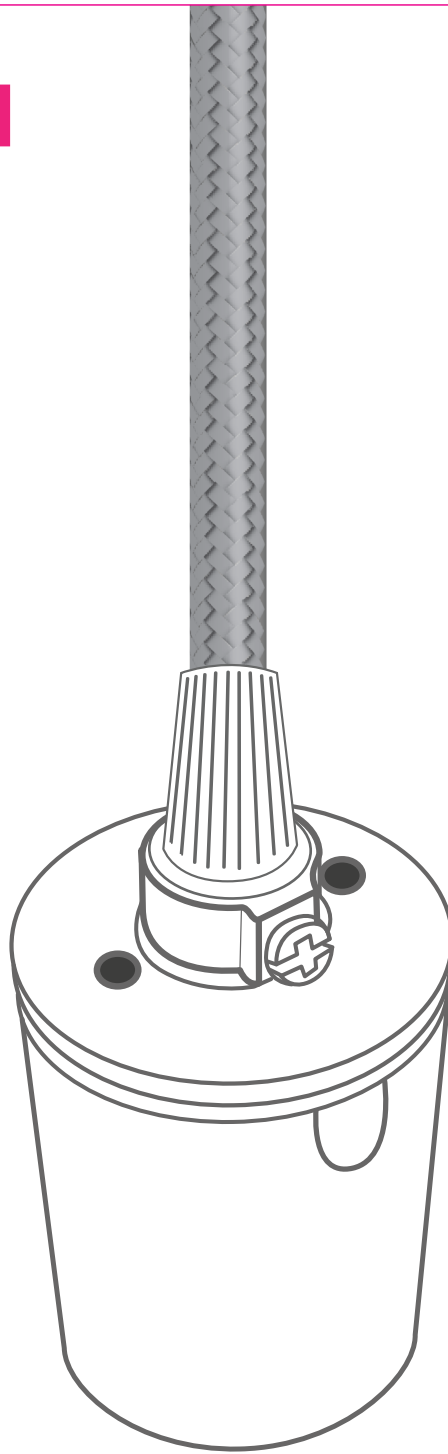


PORCELAIN SOCKET

DIY Assembly
Instructions

COLOR CORD COMPANY[®]

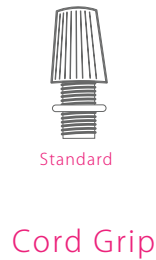
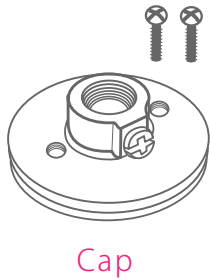


Check disclaimer on the last page prior to beginning assembly.

WIRE A SOCKET

Parts:

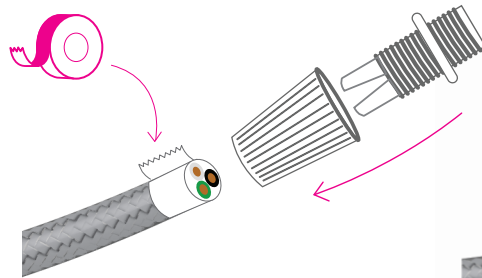
TOOLS:



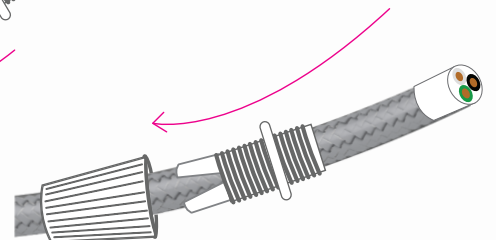
WARNING: THESE SOCKETS ARE SELF LOCKING! Do not assemble the sockets with the terminal plate inside before it is wired. The terminal is designed to lock the socket permanently.



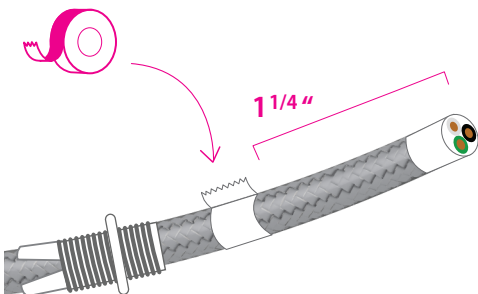
1. Grab the cord grip and untwist the cap.



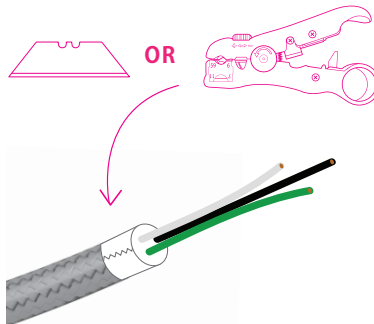
2. You might need to place tape around the end of the cord, so the cord grip and cap can slide over the cord easily. If the cap gets stuck, try spinning it clockwise while sliding it up the wire.



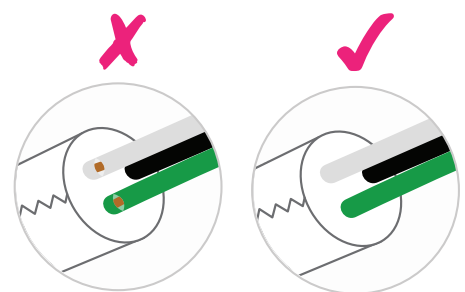
3. Insert one end of the cloth covered wire into the top hole of the cord grip's cap and then the cord grip. The cord grip's threaded end should face the end of the cord once inserted.



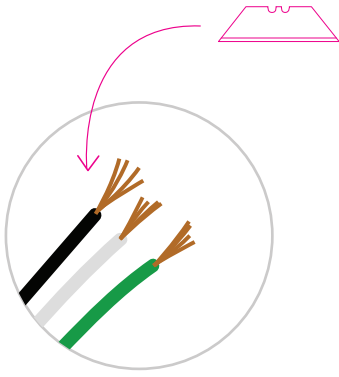
4. Measure 1 1/4" from the tip of the cloth covered wire, and wrap an inch of electric tape over the wire.



5. Over the mid section of the tape, strip the PVC housing to expose the 3 conductor wires with a blade or our **Color Cord 3000 stripping tool**.



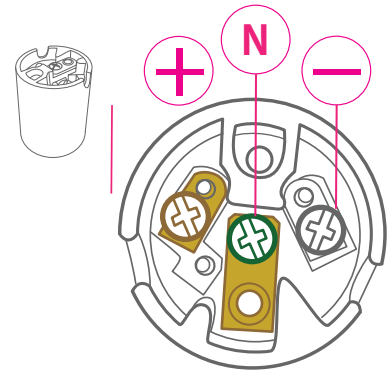
6. Make sure that there are no cuts on the conductor wires exposing the internal stranded copper wire.



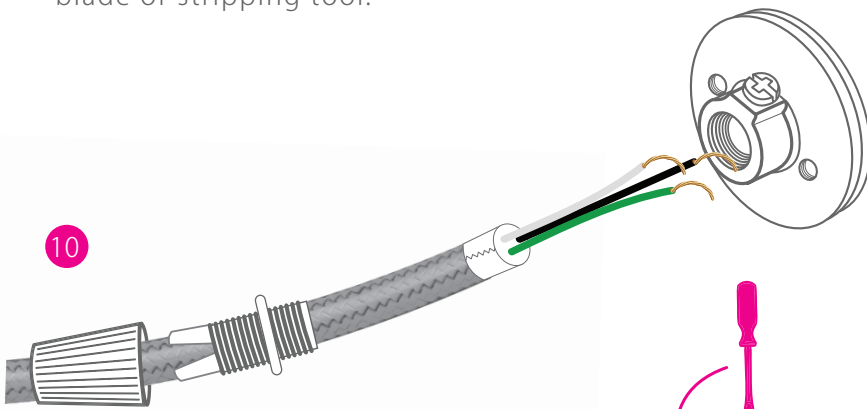
7. Strip one end of each wire to expose about 3/16" of the stranded copper wire with a blade or stripping tool.



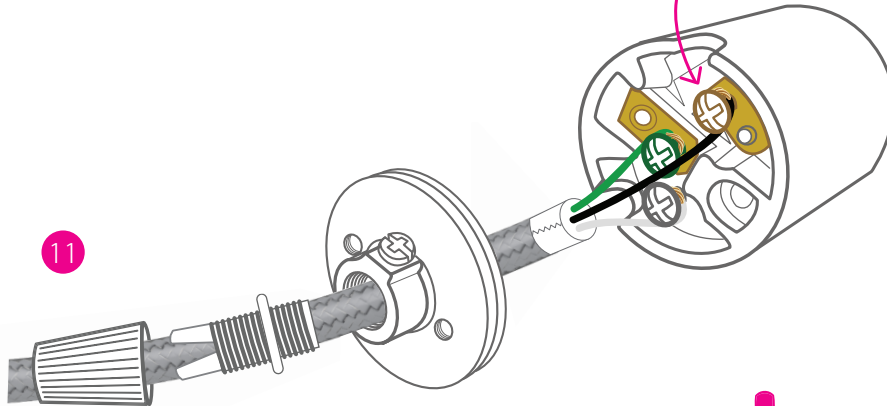
8. Using your fingers, twist the stranded wires together and bend them.



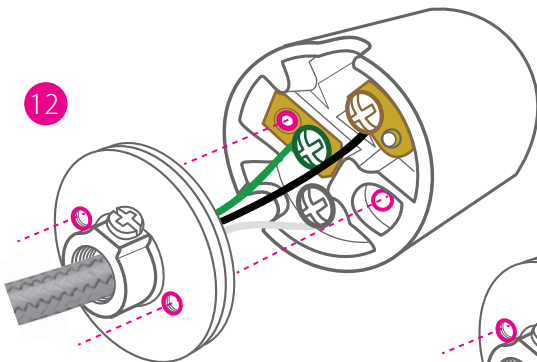
9. Locate the positive (brass), negative (silver) and ground (green) terminal screws of the top of the socket and unscrew to open them.



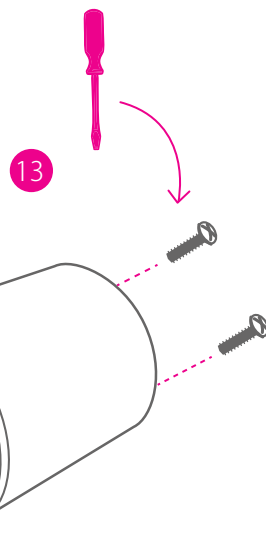
10. Insert the wires into the socket cap. Cap's threaded end should face the cord grip.



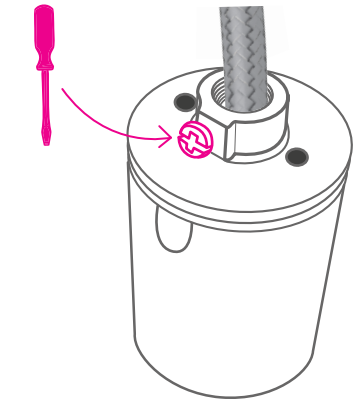
11. Wrap the stranded end of the positive (black) wire around the thread of the positive (brass) terminal screw of the socket, and tighten the screw to keep wire in place. Repeat steps to connect the ground (green) wire into the positive (green) terminal screw, and the negative (white) wire into the negative (silver) terminal screw.



12. Align the cap with the socket making sure the two cap holes for the screws are aligned with the two holes in the socket.



13. Place the two screws in the two holes inside the socket, and tighten until cap is secured. Remember to insert and tighten through the inside of the socket, and NOT from the top of the cap.



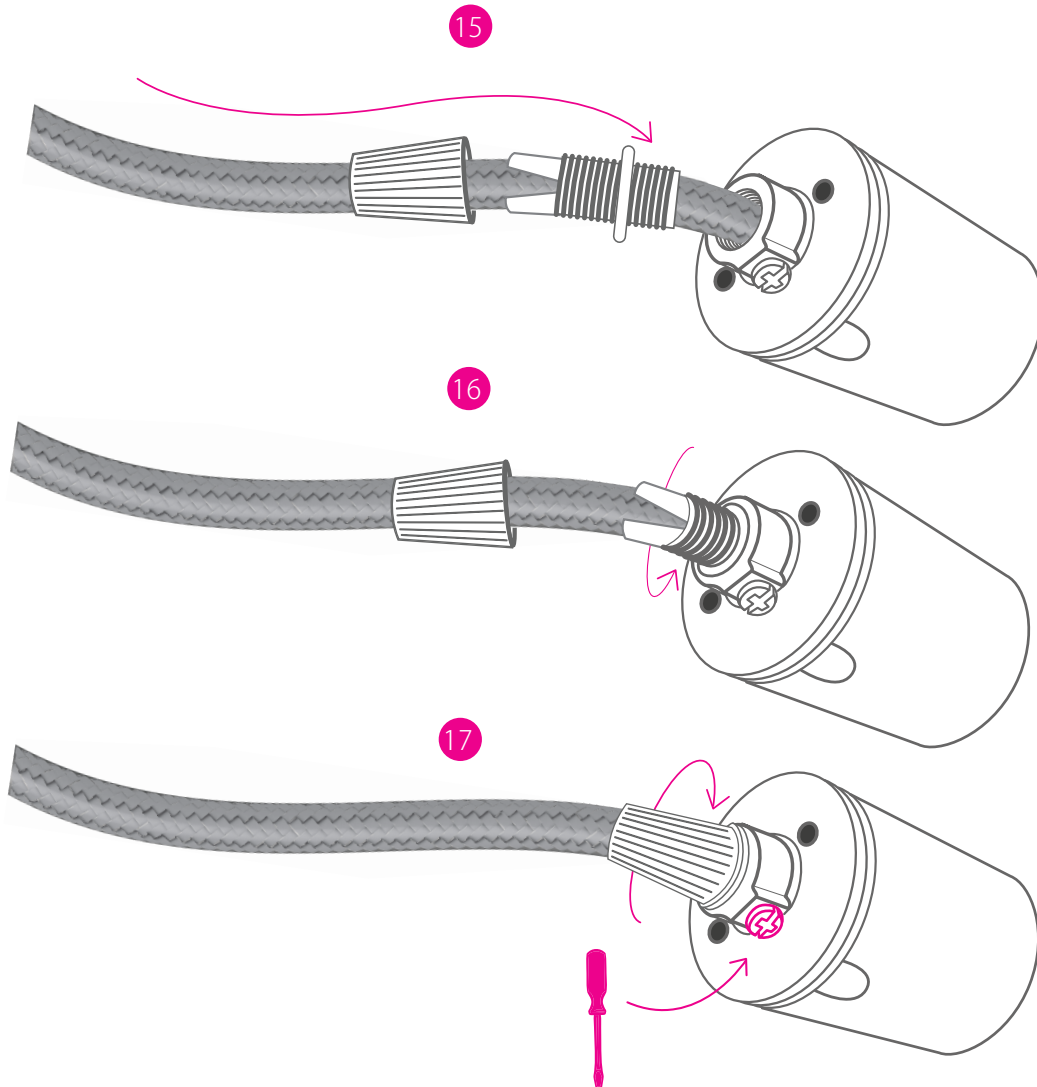
14. Loosen up the set screw on the socket cap before sliding the bottom half of the cord grip towards the cap.

15. Take caution when sliding the cord grip down the cord towards the socket so as not to snag the cloth covered wiring.

16. Twist the threaded bottom half of the cord grip into the socket, and then slide the cord grip's cap over it and twist it until it covers all the threads. The cord grip might be tight and will take some force to screw it into the threads. Don't be discouraged!

17. Once cord grip is in place, tighten the set screw in the cap.

ENJOY!



Educational, Tutorial and DIY Content Disclaimer

Educational, Tutorial and DIY Kit Content Disclaimer

All material covered on www.colorcord.com and associated social media and print assets is for informational purposes only. We take no responsibility for what you do with this knowledge. We can not be held responsible for any property or medical damages caused by items you read about on our website. We would advise you to check your local laws and consult professional electricians/contractors for any project involving electricity, construction or assembly.

The DIY and tutorial material taught throughout Color Cord Company's website and other assets is for informational purposes only. By taking any information or education material from Color Cord Company, you assume all risks for the material covered. You agree to indemnify, hold harmless, and defend The World Effect, LLC & Color Cord Company from any and all claims and damages as a result of any and all of the information covered.

By taking and/or using any informational resources from Color Cord Company, you agree that you will use this information in a safe and legal manner, consistent with all applicable laws, safety rules, and good common sense. You further agree that you will take such steps as may be reasonably necessary or required by applicable law to keep any information out of the hands of minors and untrained and/ or immature individuals.

You must accept that You and You Alone are Responsible for your safety and safety of others in any endeavor in which you engage. While the material on www.colorcord.com is provided in hopes that you build your own lighting, You are Responsible for verifying its accuracy and applicability to your project. You are Responsible for knowing your limitations of knowledge and experience. If you do any work with "main power" such as 120 or 240 VAC power wiring, you should consult a Licensed Electrician.

Some illustrative photos do not depict safety precautions or equipment, in order to show the project steps more clearly. These projects are not intended for use by children. Use of these instructions, kits, projects and suggestions is at your own risk. Color Cord Company and The World Effect, LLC disclaim all responsibility for any resulting damage, injury, or expense. It is your responsibility to make sure that your activities comply with applicable laws.

The World Effect, LLC | DBA: Color Cord Company

PO BOX 12496

Denver, CO 80212

1.800.409.1070