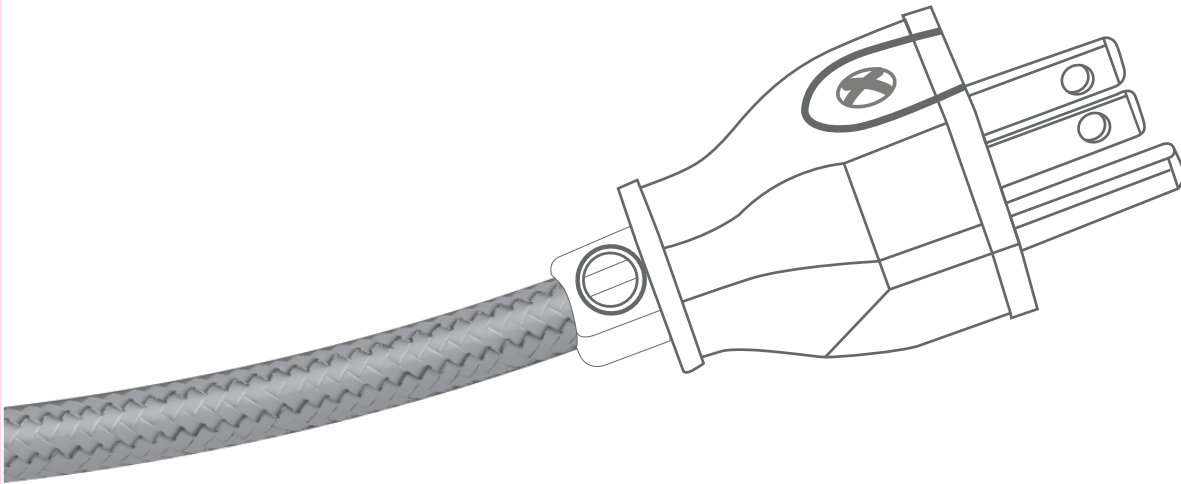


CORD PLUG END

3-prong plug

DIY Assembly Instructions

COLOR CORD COMPANY[®]



Check disclaimer on the last page prior to beginning assembly.

WIRE A 3 PRONG PLUG Parts:

TOOLS:



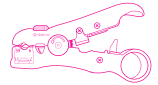
Blade



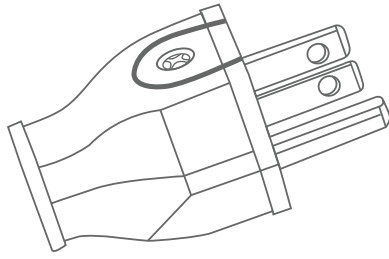
Screwdriver



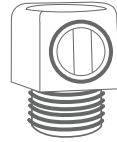
Electrical Tape



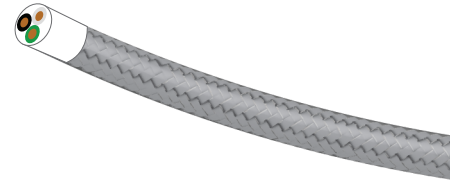
Color Cord 3000
stripping tool
NOT REQUIRED



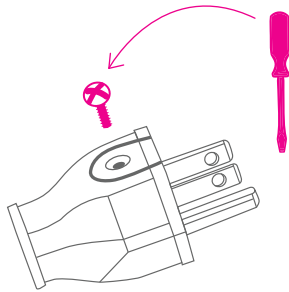
3 prong plug



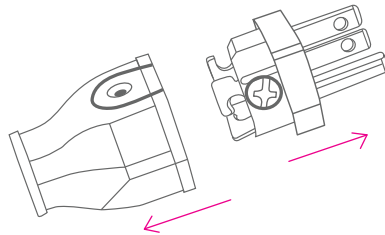
barrel cord grip



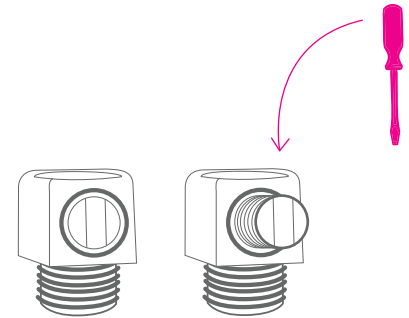
cloth covered
electrical wire
your choice of length.



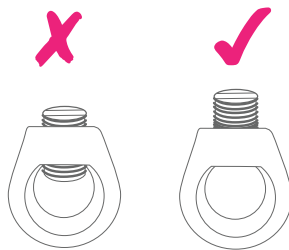
1. Remove the screw from the top of the plug.



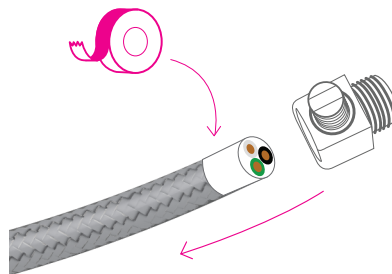
2. Pull on the prongs of the plug to release the plug from the shell.



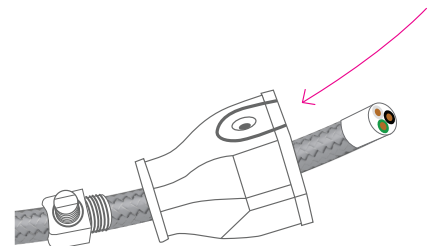
3. Loosen set screw on barrel cord grip.



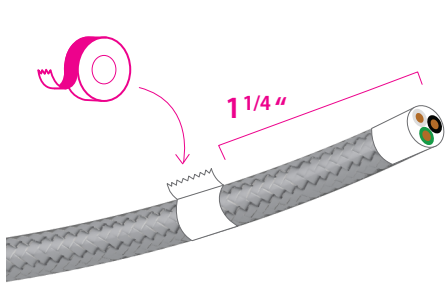
4. Look at the inside of the cord grip and make sure that the plastic screw is not covering any part of the opening.



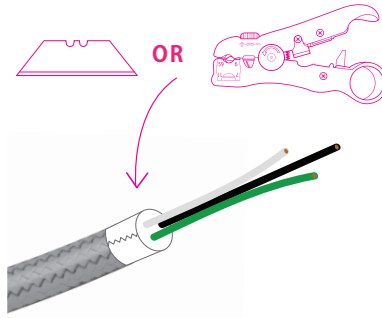
5. Insert one end of the wire into the cord grip's top opening. Cord grip's threaded end should face the end of the cord once inserted. You may need to wrap tape on the cord end for easy insertion.



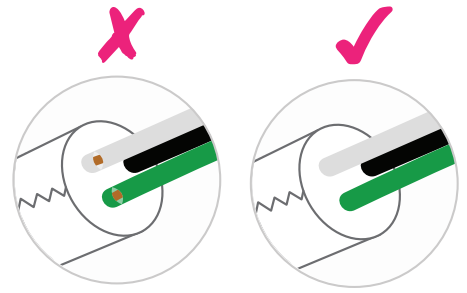
6. Insert the same end of the cord into the plug shell's small opening.



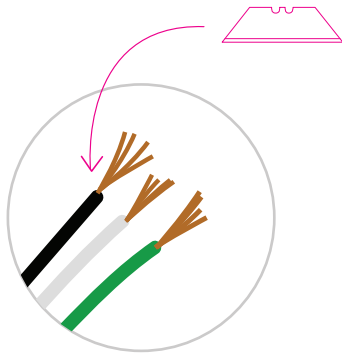
7. On that same cord end, Measure 1 1/4" from the tip of the cloth covered wire, and wrap an inch of electric tape over the wire.



8. Over the mid section of the tape, strip the PVC housing to expose the 3 conductor wires. We recommend the use of our **Color Cord 3000 stripping tool**.



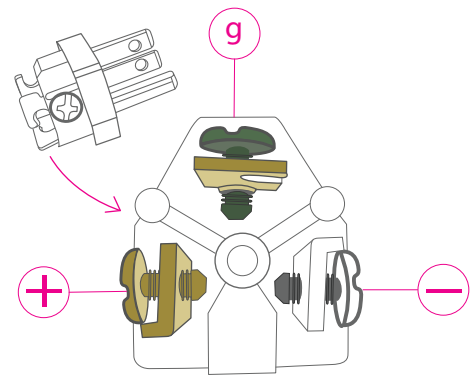
9. Make sure that there are no cuts on the conductor wires exposing the internal stranded copper wire.



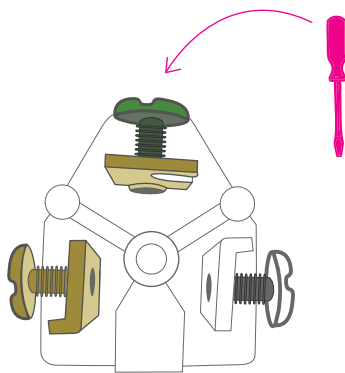
10. Strip one end of each wire to expose about 1/4" of the stranded copper wire.



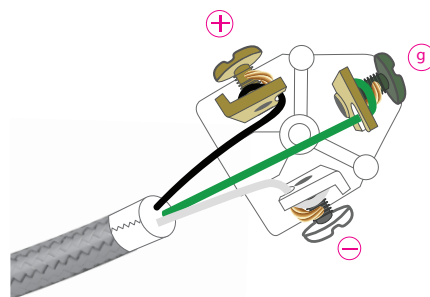
11. Using your fingers, twist the stranded wires together and bend them.



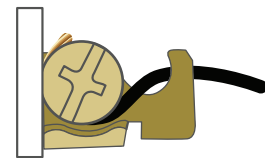
12. Locate the positive (brass), negative (silver) and ground (green) terminals on the back of the plug.



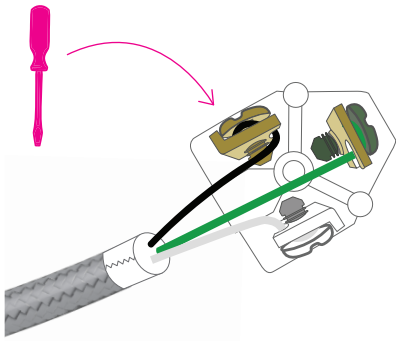
13. Loosen the 3 screws on the back of the plug to open the terminals.



14. Wrap the stranded copper wires on each matching terminal screw. The black wire (+) with the positive terminal, white wire (-) with the negative terminal and green wire with the ground terminal.



15. The stranded copper wire should be tucked in the terminal, covered by the screw's head.



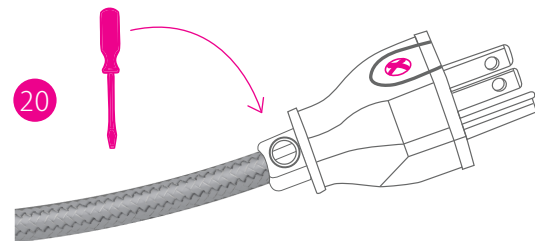
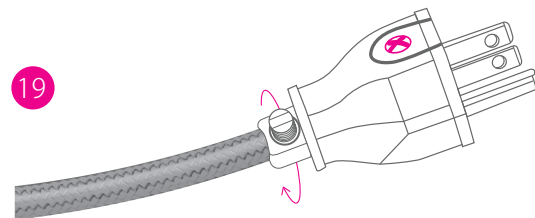
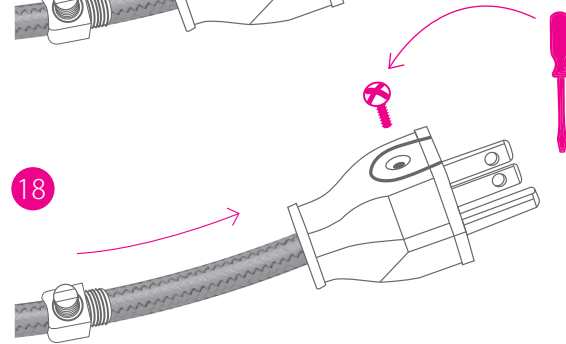
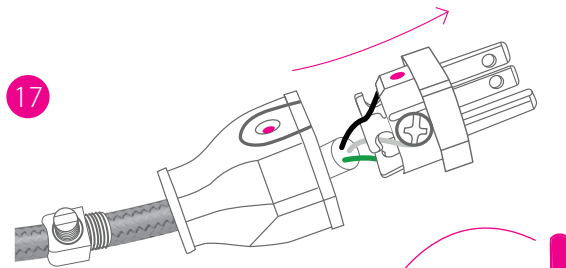
16. Tighten the screws of each terminal to secure the wire in place. Pull the wires to make sure the wires won't pull out of the terminals.

17. Pull the plug shell over the plug making sure that the screw hole on the cap aligns with the one on the plug.

18. Tighten the plug screw to secure the cap onto the plug. Bring the cord grip towards the plug and insert the threaded ends into the cap's opening.

19. Twist the cord grip until its tightly secured.

20. Tighten set screw on the cord grip.



ENJOY!

Educational, Tutorial and DIY Content Disclaimer

COLOR CORD COMPANY[®]

Educational, Tutorial and DIY Kit Content Disclaimer

All material covered on www.colorcord.com and associated social media and print assets is for informational purposes only. We take no responsibility for what you do with this knowledge. We can not be held responsible for any property or medical damages caused by items you read about on our website. We would advise you to check your local laws and consult professional electricians/contractors for any project involving electricity, construction or assembly.

The DIY and tutorial material taught throughout Color Cord Company's website and other assets is for informational purposes only. By taking any information or education material from Color Cord Company, you assume all risks for the material covered. You agree to indemnify, hold harmless, and defend The World Effect, LLC & Color Cord Company from any and all claims and damages as a result of any and all of the information covered.

By taking and/or using any informational resources from Color Cord Company, you agree that you will use this information in a safe and legal manner, consistent with all applicable laws, safety rules, and good common sense. You further agree that you will take such steps as may be reasonably necessary or required by applicable law to keep any information out of the hands of minors and untrained and/ or immature individuals.

You must accept that You and You Alone are Responsible for your safety and safety of others in any endeavor in which you engage. While the material on www.colorcord.com is provided in hopes that you build your own lighting, You are Responsible for verifying its accuracy and applicability to your project. You are Responsible for knowing your limitations of knowledge and experience. If you do any work with "main power" such as 120 or 240 VAC power wiring, you should consult a Licensed Electrician.

Some illustrative photos do not depict safety precautions or equipment, in order to show the project steps more clearly. These projects are not intended for use by children. Use of these instructions, kits, projects and suggestions is at your own risk. Color Cord Company and The World Effect, LLC disclaim all responsibility for any resulting damage, injury, or expense. It is your responsibility to make sure that your activities comply with applicable laws.

The World Effect, LLC | DBA: Color Cord Company

PO BOX 12496

Denver, CO 80212

1.800.409.1070