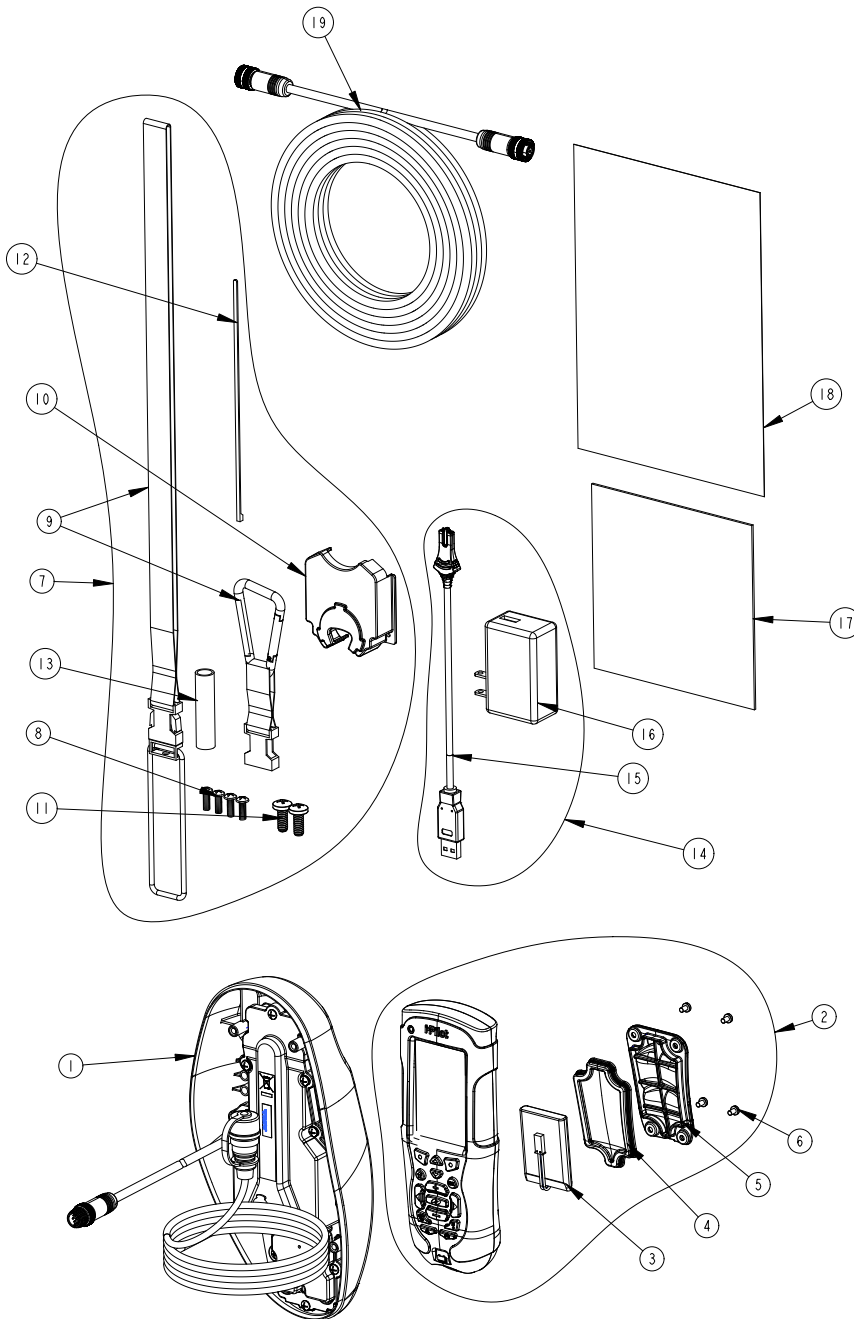




PARTS LIST VIEW POWERDRIVE V2 & RIPTIDE SP



ITEM #	PART NUMBER	DESCRIPTION	QTY
POWERDRIVE V2			
1	2990282	HEAD ASSY, V2, IP2	1
2	2994180	REMOTE ASSY, i-PILOT LINK	1
3	2370712	BATTERY, LIPO PACK	1
4	2374637	O-RING, BATTERY SEAL	1
5	2376421	DOOR, BATTERY	1
6	2383442	SCREW-3MM X .5 PPH MACHINE	4
7	2994908	BAG ASSY, i-PILOT LINK, V2	1
8	2372100	SCREW-#8-18 X 5/8 THD* (SS	4
9	2370817	LANYARD,RMT w/CARABINER	1
10	2376716	PLUG, STRAIN RELIEF V2/SP	1
11	2332104	SCREW-1/4-20 X 5/8 S/S	2
12	2376312	TIE WRAP,BLACK,UV RESIST. NYLON	5
13	2375403	HEATSHRK .375X2 ADHV LINED	4
14	2994909	BAG ASSY, i-PILOT LINK, POWER	1
15	2373241	CABLE, USB REMOTE CHARGER	1
16	2375900	ADAPTER, USB POWER PORT	1
17	2377156	MANUAL-CD, i-PILOT LINK	1
18	2377155	MANUAL QCK REF, i-PILOT LINK	1
19	490389-1	CABLE, ETH (M12-M-M12-F, 30'	1
RIPTIDE SP			
1	2990283	HEAD ASSY, SP, IP2	1
2	2994180	REMOTE ASSY, i-PILOT LINK	1
3	2370712	BATTERY, LIPO PACK	1
4	2374637	O-RING, BATTERY SEAL	1
5	2376421	DOOR, BATTERY	1
6	2383442	SCREW-3MM X .5 PPH MACHINE	4
7	2994908	BAG ASSY, i-PILOT LINK, V2	1
8	2372100	SCREW-#8-18 X 5/8 THD* (SS	4
9	2370817	LANYARD,RMT w/CARABINER	1
10	2376716	PLUG, STRAIN RELIEF V2/SP	1
11	2332104	SCREW-1/4-20 X 5/8 S/S	2
12	2376312	TIE WRAP,BLACK,UV RESIST. NYLON	5
13	2375403	HEATSHRK .375X2 ADHV LINED	4
14	2994909	BAG ASSY, i-PILOT LINK,POWER	1
15	2373241	CABLE, USB REMOTE CHARGER	1
16	2375900	ADAPTER, USB POWER PORT	1
17	2377156	MANUAL-CD, i-PILOT LINK	1
18	2377155	MANUAL QCK REF, i-PILOT LINK	1
19	490389-1	CABLE, ETH (M12-M-M12-F, 30'	1