

PARTS DIAGRAM & PARTS LIST

Item	Part #	Description	Quantity
202	2302255	GEAR & PINION,DR. HSG, STAGE 4	1
▲	9950433	TIE WRAP-4" BLACK(#21041)	1
206	2322031	TUBE-OUTPUT, SALTWATER	1
208	2322200	GEAR-OUTPUT	1
210	2378448	MAGNET-.187X.125 NCKL PLT(N/A)	4
212	2201510	COLLAR-DRIVE, OUTPUT TUBE	1
214	2321510	COLLAR-DRIVE,BOTTOM	1
216	2321704	WASHER-THRUST, STEERING	4
218	2321720	SHIM,O-RING	2
220	2324608	O-RING,224,PD PRO STR HSG	2
224	2327314	BUSHING, PRO STEERING SW	2
226	2327315	BUSHING,ALUMIN. SPACER ST	2
228	2324604	O-RING, CASE SEAL	1
230	2308601	BREATHER FILTER, DR.HOUSING	1
232	2206550	HOUSING, CONNECTOR WPJ	1
234	2323408	SCREW-#8-32 X 2.0 SHCS SS	7
236	2323410	SCREW-#8-32 X .75 SHCS SS	1
238	2202626	PIN-LATCH, SS	1
240	2322702	SPRING, LATCH PIN SS	2
242	2321702	WASHER-FLAT .375 NYLON	2
244	2263011	E-RING 3/8 DIA. SHAFT*	2
246	✘	HOUSING-STEERING, BTM, SW	1
248	2201910	BRACKET, TILT, SS	1
250	2208601	HOLDER-MAGNET w/CONFORMAL COAT	1
252	2207305	BUSHING, LATCH PIN	2
254	2201730	WASHER-FLAT, .56 ID NYLON	1
256	2201731	WASHER-FLAT, NYLON	1
258	2207310	BUSHING,STEERING HSG, PIVOT	2
260	2200100	KNOB, TILT RELEASE	1
262	2383463	SCREW-#6-32 X .625"SET SS(SUB)	1
264	✘	HOUSING-TRIM, GEAR SIDE, SW	1
266	✘	CARRIER, SLIPRING CONTACTS	1
268	✘	RING-CONTACT, SLIPRING LARGE	1
270	✘	RING-CONTACT, SLIPRING SMALL	1
272	✘	HANDLE, TRIM HSG RELS, SS	1
274	✘	SPRING-5/16" OD, SS	1
276	✘	BUSHING, TRIM, BOTTOM	1
278	✘	BUSHING-HAT 1/2"SHFT BRNZ	1

✘ This part is included in an assembly and cannot be ordered individually.

▲ Not shown on Parts Diagram.

◆ May only be available with i-Pilot or i-Pilot Link.

PARTS DIAGRAM & PARTS LIST

Item	Part #	Description	Quantity
280	✘	SHAFT-WORM	1
282	✘	PULLEY, TRIM JACKSHAFT, MACH.	1
284	✘	BEARING-THRUST, NEEDLE	1
286	✘	WASHER-THRUST, 1/2"	2
288	✘	WASHER-THRUST, 3/8"	1
290	✘	E-RING 3/8 DIA. SHAFT*	1
292	✘	BOARD ASSY, WIRELESS TRIM	1
	✘	BOARD ASSY, WIRELESS TRIM "M" *M SKU EUROPE*	1
296	✘	SCREW-#4-24 X 1/4 PHCR SS TY B	2
298	✘	PIN, BELT PULLEY	2
300	✘	PIN, 2' X 1/4"	1
302	✘	PIN-DOWEL, 1/8"	2
304	✘	BRACKET, DRIVE BLOCK	1
306	✘	SCREW-#4-24 X 1/4 PHCR SS TY B	2
308	✘	BLOCK, TUBE DRIVE	1
310	✘	GEAR/PULLEY-WORM, CLUSTER ASM	1
312	✘	MAGNET-.187X.125 NCKL PLT(N/A)	2
314	2202335	PULLEY, BELT, TOP	2
316	2770817	BELT-LIFT 54"	1
	2770818	BELT-LIFT 60"	1
	2770819	BELT-LIFT 72"	1
322	✘	HOUSING-TRIM, MOTOR SIDE, SW	1
324	3393481	SCREW-#10X.75"PPH HI-LO SS	4
326	✘	MOTOR, TRIM	1
328	✘	PLATE-ADAPTER, LIFT MOTOR	1
330	✘	SCREW-M4 X 10 PFH, ZP	2
332	✘	PULLEY, LIFT MOTOR, MACHINED	1
334	2201722	WASHER-#6, .625 OD, ZP STEEL	1
336	✘	PLATE-MOTOR	1
338	✘	TENSIONER-BELT	1
340	✘	SCREW-M3-.5 X 10 PPH, ZPS	3
342	✘	LOCKWASHER-SPLIT, 3MM, ZP	3
344	✘	SCREW-SET-#8-32 X 1/4" S/S	1
▲	✘	SCREW-#10X.75"PPH HI-LO SS	1
348	2200810	BELT-TRIM	1
350	2204602	O-RING, TRIM HOUSING COVER,WHT	1
352	2204601	O-RING, TRIM HOUSING	1
354	2206411	COVER, TRIM HOUSING, SW	1

✘ This part is included in an assembly and cannot be ordered individually.

▲ Not shown on Parts Diagram.

◆ May only be available with i-Pilot or i-Pilot Link.

PARTS DIAGRAM & PARTS LIST

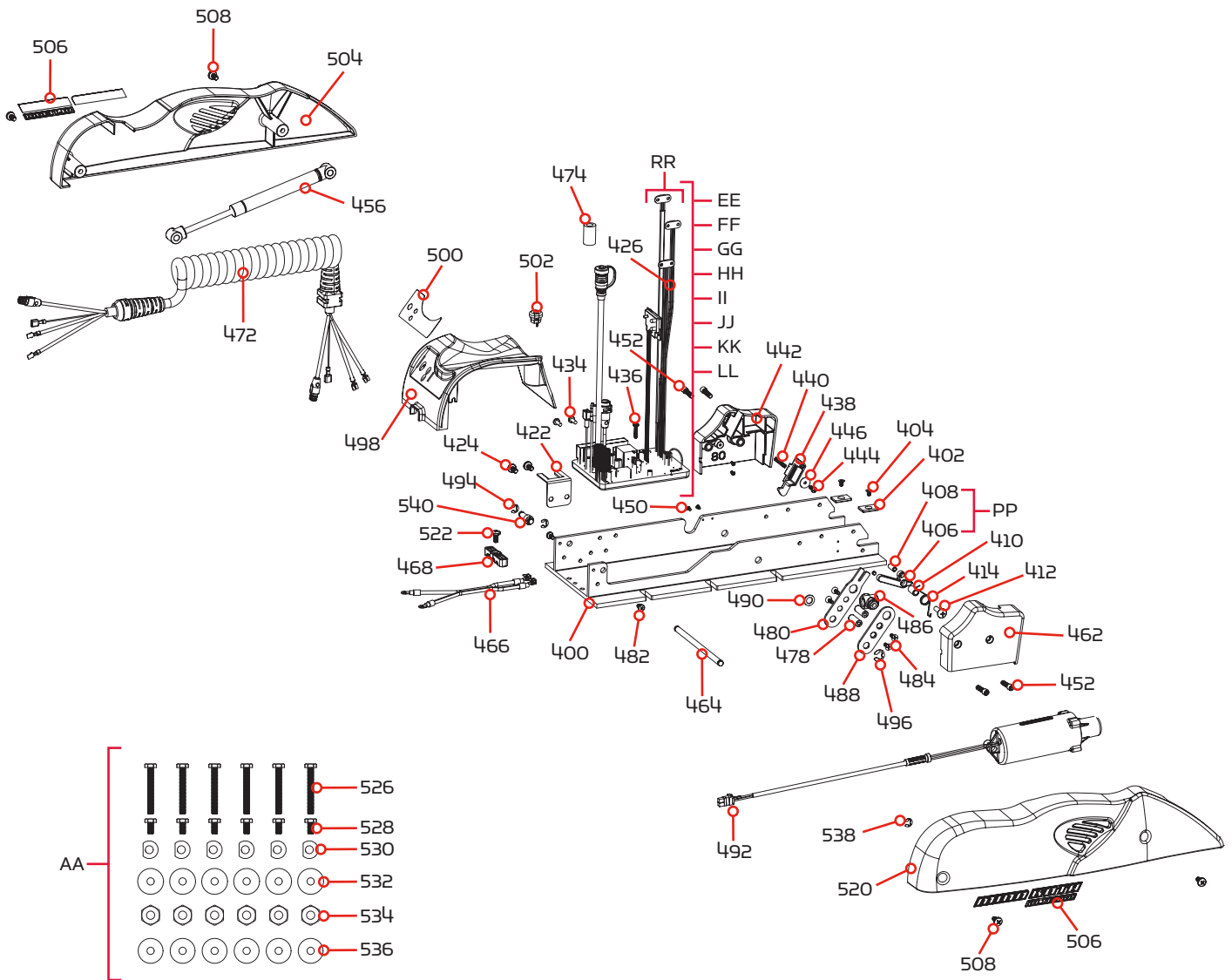
Item	Part #	Description	Quantity
356	✘	SCREW-#10X.75"PPH HI-LO SS	6
358	3391732	WASHER, SEALING	6
360	3394602	WASHER-FLAT #8 SS	6
362	2202600	PIN-PIVOT,DRIVEHOUSING,SS	1
364	2205906	ADAPTER,STEERING HSG RGHT,WHT	1
366	2205901	ADAPTER,STEERING HSG LEFT,WHT	1
368	2332103	SCREW-#6-20 X 3/8 THD*(SS)	4
370	2203407	SCREW-#6-32 X .625" PFH, SS	1
372	2051710	SPLIT LOCK WASHER 3MM	4
374	2372103	SCREW-X6 X .375 PLASTITE SS	4

- ✘ This part is included in an assembly and cannot be ordered individually.
- ▲ Not shown on Parts Diagram.
- ◆ May only be available with i-Pilot or i-Pilot Link.

PARTS DIAGRAM & PARTS LIST

RIPTIDE ULTERRA MOUNT

Mount Parts Diagram



Mount Parts List

Assembly	Part #	Description	Quantity
EE	2774080	MAIN CTRL BD, US/AU/CA, 24V, 60" *80LB THRUST* *60*	1
FF	2774082	MAIN CTRL BD, US/AU/CA, 36V, 60" *112LB THRUST* *60*	1
GG	2774084	MAIN CTRL BD, EUR, 24V, 60" *80LB THRUST* *60* *M SKU EUROPE*	1
HH	2774086	MAIN CTRL BD, EUR, 36V, 60" *112LB THRUST* *60* *M SKU EUROPE*	1
II	2774091	MAIN CTRL BD, US/AU/CA, 36V, 72" *112LB THRUST* *72*	1
JJ	2774090	MAIN CTRL BD, US/AU/CA, 24V, 54" *80LB THRUST* *54*	1
KK	2774092	MAIN CTRL BD, EUR, 24V, 54" *80LB THRUST* *54* *M SKU EUROPE*	1
LL	2774093	MAIN CTRL BD, EUR, 36V, 72" *112LB THRUST* *72* *M SKU EUROPE*	1
AA	2994917	BAG ASSY, ULTERRA MTG HARDWARE	1
PP	2777901	CAM W/MAGNET, SPRING PIN	1
RR	2880350	SENSOR WIRE W/BUTT CONNECTORS	1
Item	Part #	Description	Quantity
400	2201902	BASE, MACHINED, SW	1
402	2205105	PAD, STOP	2
404	2203421	SCREW-#10-24X 5/16 PFH SS	2
406	2207901	CAM,PIN SNSR w/CNFML COAT	1
408	2262632	PIN-SPRING 1/4" X 5/8" SS	1
410	2201702	SPACER, PIN SENSOR	1
412	9280710	HDW SCR 1/4 20X7/8 TRUSS PHIL	1
414	2042711	SPRING-TORSION, SS	1
422	2200820	CLIP-CORD, SS	1
424	2323405	SCREW-1/4-20 X 1/2" MCH SS	2
426	✘	CONTROL BOARD ASSY, MAIN	1
428	2305403	SHRINK TUBE-.500 IDX1.0" ADHSV	4
430	2305402	SHRINK TUBE-.374 OD X 2.25"	1
432	2305410	SHRINK TUBE-.315 OD X 2.25"	2
434	2323406	SCREW-#10-24 X .50 CRPH SS	2
436	2373487	SCREW-#8-32 X 3/4" PPH MACH SS	1
438	2203701	PLUNGER, RAMP w/CONFORMAL COAT	1
440	2202703	SPRING, PLUNGER-RAMP	1
442	2203915	RAMP-MOTOR, LEFT, 112# *112 LB THRUST*	1
	2203916	RAMP-MOTOR, LEFT, 80# *80 LB THRUST*	1
444	2301310	SCREW-#8-18 X 1/2 (SS)*	1
446	2201723	WASHER-#6, .625 OD, SS	1
448	2373440	SCREW-#4-24 X 1/4 PHCR SS TY B	2
452	2263453	SCREW-1/4-20 X 1" SHCS S/S	4
▲	2200825	CLIP, SENSOR CABLE	2

✘ This part is included in an assembly and cannot be ordered individually.

▲ Not shown on Parts Diagram.

◆ May only be available with i-Pilot or i-Pilot Link.

PARTS DIAGRAM & PARTS LIST

Item	Part #	Description	Quantity
456	2208803	DAMPER, SS, 112# *112 LB THRUST*	1
	2208801	DAMPER, SS, 80# *80 LB THRUST*	1
460	2263006	E-RING,5/16,S/S GAS ASSIST	2
462	2203910	RAMP-MOTOR, RIGHT, 112# *112 LB THRUST*	1
	2203911	RAMP-MOTOR, RIGHT, 80# *80 LB THRUST*	1
464	2202605	PIN, ACTUATOR, SS	1
466	2090651	LEADWIRE,10 GA,PD	1
468	2321310	STRAIN RELIEF	1
472	2991275	COIL CORD ASY 72" NON-US *72*	1
	2991271	COIL CORD ASY 54/60" NON-US *54* *60*	1
474	2307313	BEAD-FERRITE	1
▲	2256300	TIE WRAP-5.5" BLACK	2
478	2202901	STANDOFF, LIFT ARM	2
480	2204200	ARM-LIFT, INNER, SS	1
482	2383447	SCREW-#10-32 X 3/8" PPH SS	2
484	2203410	SCREW-#10-32 X .5"	4
486	2203100	NUT, TILT MOTOR	1
488	2204205	ARM-LIFT, OUTER, SS	1
490	2321702	WASHER-FLAT .375 NYLON	1
492	2997813	ASSEMBLY, TILT MOTOR	1
494	2263006	E-RING,5/16,S/S GAS ASSIST	1
496	2263011	E-RING 3/8 DIA. SHAFT*	1
498	2206511	HOUSING-CONTROL, WHITE	1
500	2205601	DECAL-B.METER/CON/PWR, SW WHT	1
502	2202910	STRAIN RLF,HEYC SR 6N3-4	1
504	2203906	SIDEPLATE, LEFT, SW	1
506	2205512	DECAL,SIDEPLATE,SW ULTERRA,T2	2
508	2323405	SCREW-1/4-20 X 1/2" MCH SS	4
520	2203901	SIDEPLATE, RIGHT, SW	1
522	2323405	SCREW-1/4-20 X 1/2" MCH SS	1
▲	2256300	TIE WRAP-5.5" BLACK	1
526	2203430	SCREW-1/4-20 X 2.0 HHCS SS	6
528	2203431	SCREW-1/4-20 X 0.5 HHCS SS	6
530	2201725	WASHER-CLIPPED, 1/4", 1.00" OD	6
532	2261713	WASHER-1/4 FLAT 18-8 SS	6
534	2263103	NUT-1/4-20 NYLOCK SS	6
536	2301720	WASHER-MOUNTING - RUBBER	6
538	2263006	E-RING,5/16,S/S GAS ASSIST	1
540	2202903	STANDOFF,OIL DAMPENER,SW	2

✘ This part is included in an assembly and cannot be ordered individually.

▲ Not shown on Parts Diagram.

◆ May only be available with i-Pilot or i-Pilot Link.