

PARTS DIAGRAM & PARTS LIST

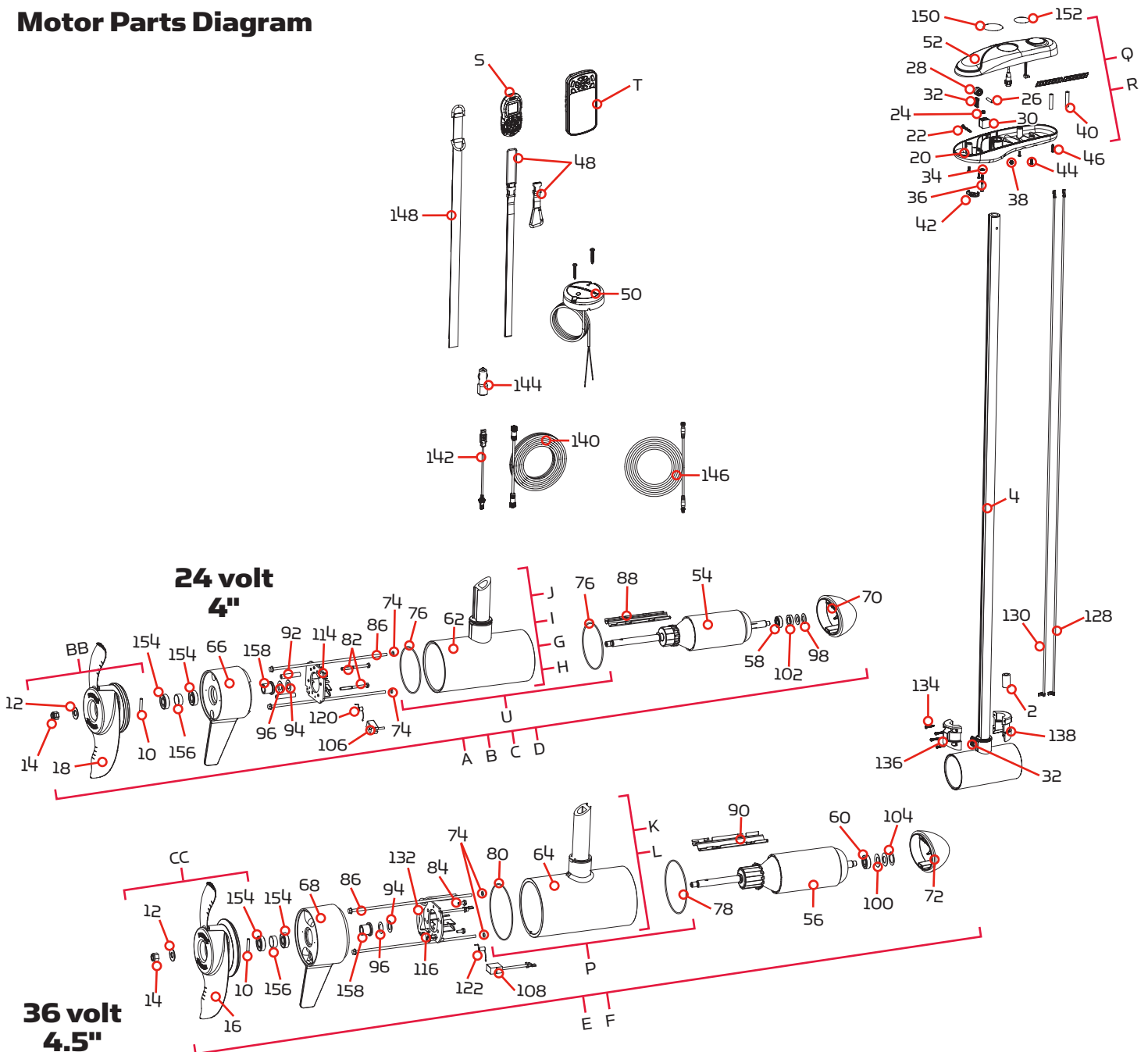
RIPTIDE ULTERRA

80/112 LBS THRUST - 24/36 VOLT - 45"/60"/72" SHAFT

The parts diagram and parts list provides Minn Kota® WEEE compliance disassembly instructions. For more information about where you should dispose of your waste equipment for recycling and recovery and/or your European Union member state requirements, please contact your dealer or distributor from which your product was purchased. Tools required, but not limited to: flat head screwdriver, Phillips screwdriver, socket set, pliers, wire cutters.

RIPTIDE ULTERRA MOTOR

Motor Parts Diagram



PARTS DIAGRAM & PARTS LIST

Motor Parts List

Assembly	Part #	Description	Quantity
A	2777030	MTR/TUBE ASSY 80# 54" RT *MOTOR & TUBE*	1
B	2777031	MTR/TUBE ASSY 80# 60" RT *MOTOR & TUBE*	1
C	2777032	MTR/TUBE ASSY 80# 54" RT *MOTOR & TUBE* *M SKU EUROPE*	1
D	2777033	MTR/TUBE ASSY 80# 60" RT *MOTOR & TUBE* *M SKU EUROPE*	1
E	2777092	MTR/TUBE ASSY 112# 60" RT *MOTOR & TUBE*	1
F	2777094	MTR/TUBE ASSY 112# 72" RT *MOTOR & TUBE*	1
G	2777392	CTR HSG ASY, CB, 80#, SW, 54" TUBE *TUBE*	1
H	2777393	CTR HSG ASY, CB, 80#, SW, 60" TUBE *TUBE*	1
I	2777394	CTR HSG ASY, CB, 80#, SW, 54" TUBE *TUBE* *M SKU EUROPE*	1
J	2777395	CTR HSG ASY, CB, 80#, SW, 60" TUBE *TUBE* *M SKU EUROPE*	1
K	2777347	CTR HSG ASY, CB, 112#, SW, 60" TUBE *TUBE*	1
L	2777348	CTR HSG ASY, CB, 112#, SW, 72" TUBE *TUBE*	1
BB	1378132	80# THRUST PROP KIT	1
CC	1378160	112# THRUST PROP KIT	1
U	2889460	SEAL & O-RING KIT *80LB THRUST*	1
P	2881450	SEAL & O-RING KIT 112 *112LB THRUST*	1
Q	2774159 ♦	MOTOR KIT, iPLT 1.6 RT ULTERRA	1
R	2774158 ♦	MOTOR KIT, iP 3.0 RT ULTERRA	1
S	2994075 ♦	REMOTE ASSY, IPILOT 1.6	1
T	2994076 ♦	REMOTE ASSY, IPILOT LINK *LINK ONLY*	1
Item	Part #	Description	Quantity
2	2307312	BEAD-FERRITE *M SKU*	1
4	✘	TUBE-COMP,WHT,60",w/1/4" WALL	1
	✘	TUBE-COMP,WHT,72",w/1/4" WALL	1
	✘	TUBE-COMP,WHT,60", w/1/4" WALL	1
	✘	TUBE-COMP,WHT,54", w/1/4" WALL	1
	✘	TUBE-COMP,WHT,54",w/1/4" WALL	1
▲	✘	SEAL,BUNG UPPER,SW	1
▲	✘	SEAL,BUNG LOWER	1
10	2262658	PIN-DRIVE 1" X 3/16" S/S	1
12	2091701	WASHER-PROP (LARGE)	1
14	2198401	ANODES, ZINC, 4.0"LWR UNIT	1
16	2341160	PROP-WW2 (4.5) w/ADP.RING *112 LB THRUST*	1
18	2331160	PROP-WW2 (4") w/ADP.RING *80 LB THRUST*	1
20	2202507	CONTROL BOX BOTTOM, SW	1
22	2093400	SCREW-#10-24X1-7/8 PPH SS	1

✘ This part is included in an assembly and cannot be ordered individually.

▲ Not shown on Parts Diagram.

♦ May only be available with i-Pilot or i-Pilot Link.

PARTS DIAGRAM & PARTS LIST

Item	Part #	Description	Quantity
24	2333101	NUT-HEX #10-24 UNC-2B NYL SS	1
26	2202635	PIN-DOWEL, 1/4" OD SS	1
28	2202335	PULLEY, BELT, TOP	1
30	2202800	BLOCK, BELT	1
32	2200800	BELT-RACK, LOWER	1
34	2201721	WASHER-#10 SAE, SS	1
36	2203411	SCREW-#10-24,SHCS,SS, RIE 4606	1
38	2333101	NUT-HEX #10-24 UNC-2B NYL SS	1
40	2305402	SHRINK TUBE-.374 OD X 2.25"	2
42	2224703	INSERT-PLUG, PD/AP WHITE *NO HOLE*	1
	2224705	INSERT-PLUG, WHT, I PILOT *LARGE HOLE*	1
44	2372100	SCREW-#8-18 X 5/8 THD* (SS)	4
46	2203403	SCREW-#6 X 1.0 BRASS HI-LO	1
48	2390800 ♦	LANYARD w/CARABINEER,IP REMOTE	1
50	2996400 ♦	HEADING SENSOR ASSEMBLY	1
52	2205509	DECAL-GENERIC, PUSH BTN TOP SW	1
54	2-100-214	ARM ASSY 24V 4" 80# (WW2) *80 LB THRUST*	1
56	2-100-245	ARMATURE ASY 4.5"LWR UNIT *112 LB THRUST*	1
58	140-010	BEARING - BALL *80 LB THRUST*	1
60	140-014	BEARING-BALL 6000 *112 LB THRUST*	1
62	✘	CTR HSG ASY 4.0 SW/WHT-MG *80 LB THRUST*	1
64	✘	CTR HSG ASY 4.5" MAG SW CB TER *112 LB THRUST*	1
66	2-300-370	BRUSH END HSG ASY SW/W 4.0 *80 LB THRUST*	1
68	2-300-156	BRUSH END HSG ASY 4.5" SW *112 LB THRUST*	1
70	421-376	HSG PLN END 4" SW WHT BS *80 LB THRUST*	1
72	421-241	PLAIN END HSG 4.5" PNTD SW *112 LB THRUST*	1
74	701-009	O-RING, THRU BOLT *80 LB THRUST* *112 LB THRUST*	2
76	701-043	O-RING *80 LB THRUST*	2
78	701-098	O-RING, 98MM X 2MM *112 LB THRUST*	1
80	701-103	O-RING,103MM X 3.00MM, 70 BUNA *112 LB THRUST*	1
82	830-027	SCREW - SELF-THREAD 10-32X2.25 *80 LB THRUST*	2
84	2053410	SCREW-#8-32 X 1/2 TRI-LOBE HEX *112 LB THRUST*	2
86	830-094	THRU BOLT 12-24 X10.31 *80 LB THRUST* *112 LB THRUST*	2
88	582-013	CLIP, RETAINING SHORT *80 LB THRUST*	1
90	582-016	CLIP-RETAINING, SONAR *112 LB THRUST*	1
92	973-025	SPACER - BRUSHPLATE *80 LB THRUST*	2
94	990-051	WASHER - STEEL THRUST *80 LB THRUST* *112 LB THRUST*	1
96	990-052	WASHER - NYLATRON *80 LB THRUST* *112 LB THRUST*	1

✘ This part is included in an assembly and cannot be ordered individually.

▲ Not shown on Parts Diagram.

♦ May only be available with i-Pilot or i-Pilot Link.

PARTS DIAGRAM & PARTS LIST

Item	Part #	Description	Quantity
98	992-010	WASHER - BELLEVILLE *80 LB THRUST*	2
100	992-011	WASHER-BELLEVILLE *112 LB THRUST*	2
102	990-045	SPACER - THRUST *80 LB THRUST*	1
104	990-011	WASHER-SHIM OD 1",ID.630"SS *112 LB THRUST*	1
106	188-094	BRUSH W/TERMINAL *80 LB THRUST*	2
108	188-095	BRUSH *112 LB THRUST*	2
▲	✘	BRUSH HOLDER *80 LB THRUST*	2
▲	✘	BRUSH HOLDER *112 LB THRUST*	2
114	738-004	BRUSH PLATE-4" terminal *80 LB THRUST*	1
116	738-011	BRUSH PLATE *112 LB THRUST*	1
▲	✘	RIVET-.25" *80 LB THRUST* *112 LB THRUST*	6
120	975-041	SPRING - TORSION *80 LB THRUST*	2
122	975-045	SPRING-TORSION *112 LB THRUST*	2
▲	✘	CONNECTOR 1/4 MALE TAB QD *80 LB THRUST*	2
▲	✘	TERMINAL 1/4" MALE TAB-THREE *112 LB THRUST*	2
128	640-025	LEADWIRE BLK 10 AWG 66 3/4 XLP *80 LB THRUST* *54*	1
	640-022	LEADWIRE BLK 10 AWG 72.5 XLP *80 LB THRUST* *60*	1
	640-045	LEADWIRE BLK 10AWG 76 1/2" GPT *112 LB THRUST* *60*	1
	640-049	LEADWIRE BLK 10AWG 88.50" GPT *112 LB THRUST* *72*	1
130	640-133	LEADWIRE RED 10AWG 66-1/4 XLP *80 LB THRUST* *54*	1
	640-126	LEADWIRE RED 10AWG 71" XLP *80 LB THRUST* *60*	1
	640-145	LEADWIRE RED 10AWG 75 7/8" GPT *112 LB THRUST* *60*	1
	640-149	LEADWIRE RED 10AWG 88" GPT *112 LB THRUST* *72*	1
132	2307312	BEAD-FERRITE *112 LB THRUST*	1
134	3393480	SCREW-#10 X 1.0" PPH HI-LOSS	4
136	2201505	COLLAR, BELT CLAMP	1
138	2201500	COLLAR, CLAMP	1
140	490389-1◆	CABLE, ETH (M12-M-M12-F, 30'	1
142	2373241◆	CABLE, USB REMOTE CHARGER LINK	1
144	2375901◆	ADAPTER, USB DC POWER LINK	1
146	2211415	CABLE-EXTENSION, PD/AP 110"	1
148	2203800	STRAP, HOLD DOWN	1
150	2205509	DECAL-GENERIC, PUSH BTN TOP SW	1
152	2395521 ◆	DECAL, DOMED IPILOT SW	1
▲	2052510	CABLE CLAMP, 3/16", NYLON	2
154	888-025	SEAL	2
156	725-095	PAPER TUBE	1
158	144-017	BEARING	1

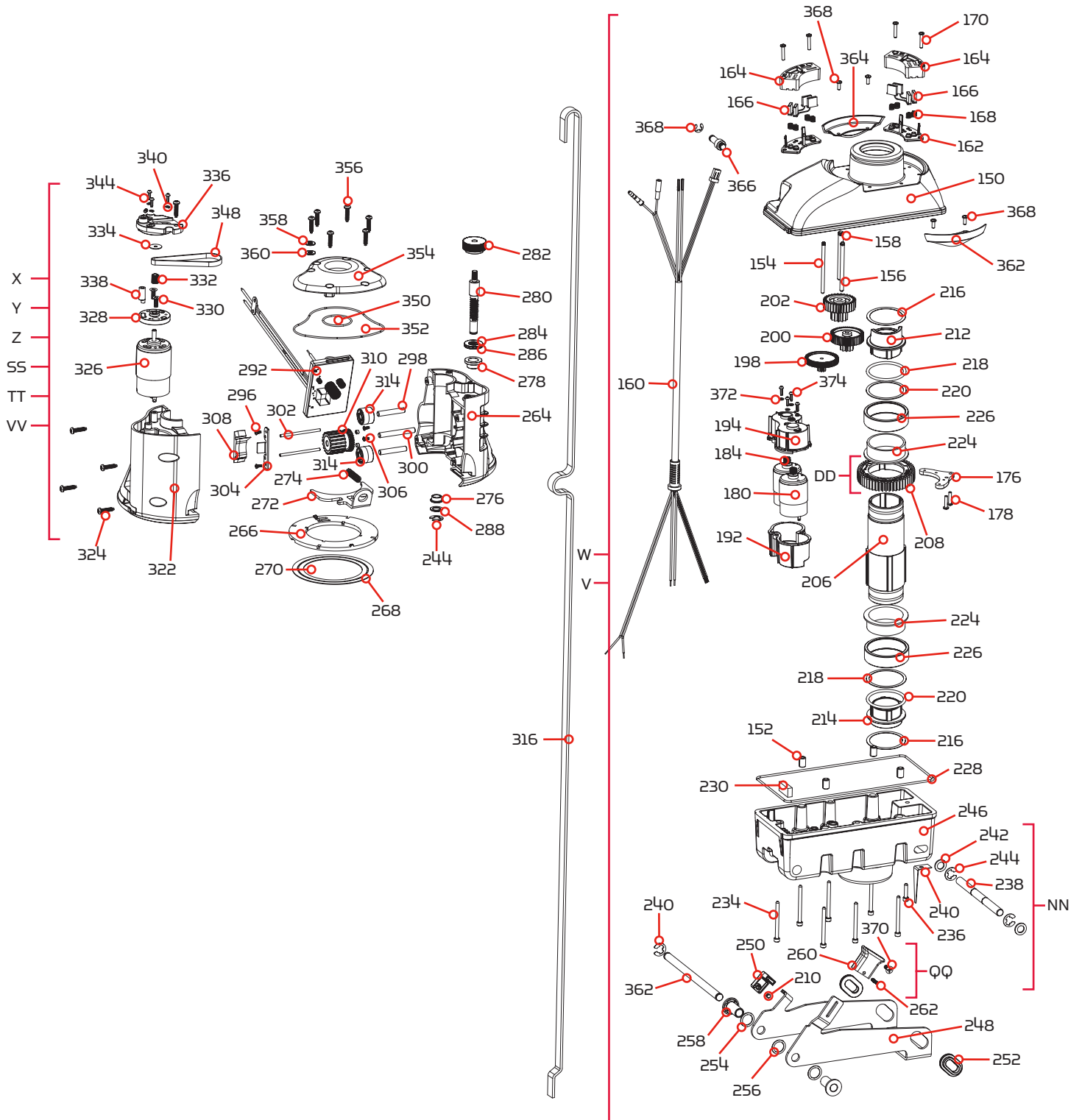
✘ This part is included in an assembly and cannot be ordered individually.

▲ Not shown on Parts Diagram.

◆ May only be available with i-Pilot or i-Pilot Link.

RIPTIDE ULTERRA STEERING HOUSING & TRIM HOUSING

Steering Housing & Trim Housing Parts Diagram



PARTS DIAGRAM & PARTS LIST

Steering Housing & Trim Housing Parts List

Assembly	Part #	Description	Quantity
V	2996524	ASM, STEERING 36V SW *112LB THRUST*	1
W	2996523	ASM, STEERING 24V SW *80LB THRUST*	1
X	2997825	ASSY,TRIM MOD "M",SW, 72" *M SKU*	1
Y	2997821	ASSY,TRIM MODULE, SW, 72"	1
Z	2997824	ASSY,TRIM MOD "M",SW, 60" *M SKU*	1
SS	2997804	ASSY,TRIM MODULE, SW, 60"	1
TT	2997808	ASSY,TRIM MODULE, SW, 54"	1
VV	2997828	ASSY,TRIM MOD "M",SW, 54" *M SKU*	1
DD	2772200	OUTPUT GEAR W/MAGNETS	1
NN	2774202	TILT BRACKET ASSEMBLY	1
QQ	2770100	RELEASE KNOB WITH SCREW KIT	1
Item	Part #	Description	Quantity
150	✘	STEERING HSG COVER SW PNT	1
152	✘	PIN-ROLL 5/16" X 1/2"	4
154	✘	SHAFT-GEAR, FIRST CLUSTER	1
156	✘	SHAFT-GEAR,INTERMED.CLUSTER	1
158	✘	SHAFT-GEAR, THIRD CLUSTER	1
160	✘	LEADWIRE,STEERING MTR, 8 COND.	1
162	✘	INSULATOR, BLOCK-BRUSH	2
164	✘	BLOCK-BRUSH, SLIPRING	2
166	✘	BRUSH SHUNT ASSEMBLY	2
168	✘	SPRING-COMPRESSION, BRUSH	4
170	2203408	SCREW-#6-32 X .75" PPH, NYLON	4
176	2201920	BRACKET-SENSOR, STEERING HSG	1
178	2303412	SCREW-#6-20 X 5/8 SELF TAP	2
180	✘	MOTOR, STEERING 24V T2 *80LB THRUST*	1
	✘	MOTOR, STEERING 36V FW T2 *112LB THRUST*	2
182	2320320	WIRE EXTENSION, 112 MOTOR	1
184	2322215	GEAR-PINION, DR.HSG, STAGE 1	1
186	2051710	LOCKWASHER-SPLIT, 3MM, ZP	4
188	2053422	SCREW-M3-.5 X 10 PPH, ZPS	4
190	2043412	SCREW-#8-18 X 3/4 TY AB SS PPH	1
192	2322520	CASE-MOTOR,STRG HSG,TOP	1
194	2322525	CASE-MOTOR,STRG HSG,BTM	1
198	2322210	GEAR & PINION, DR.HSG, STAGE 2	1
200	2302250	GEAR & PINION,DR. HSG, STAGE 3	1

✘ This part is included in an assembly and cannot be ordered individually.

▲ Not shown on Parts Diagram.

◆ May only be available with i-Pilot or i-Pilot Link.