

PARTS DIAGRAM & PARTS LIST

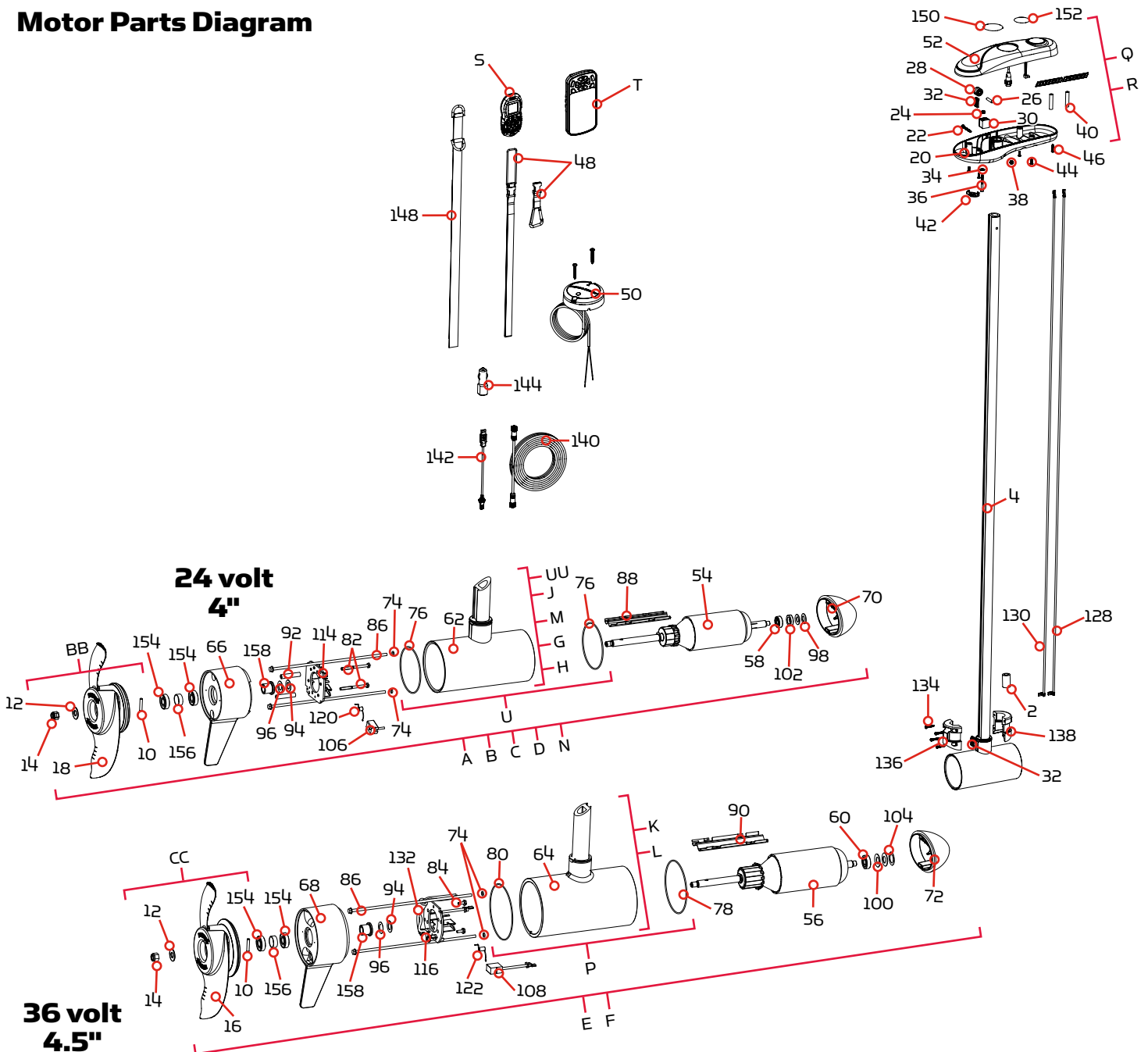
RIPTIDE ULTERRA

80/112 LBS THRUST - 24/36 VOLT - 54"/60"/72" SHAFT

The parts diagram and parts list provides Minn Kota® WEEE compliance disassembly instructions. For more information about where you should dispose of your waste equipment for recycling and recovery and/or your European Union member state requirements, please contact your dealer or distributor from which your product was purchased. Tools required, but not limited to: flat head screwdriver, Phillips screwdriver, socket set, pliers, wire cutters.

RIPTIDE ULTERRA MOTOR

Motor Parts Diagram



PARTS DIAGRAM & PARTS LIST

Motor Parts List

Assembly	Part #	Description	Quantity
A	2777030	MTR/TUBE ASSY 80# 54" RT *MOTOR & TUBE*	1
B	2777031	MTR/TUBE ASSY 80# 60" RT *MOTOR & TUBE*	1
C	2777032	MTR/TUBE ASSY 80# 54" RT *MOTOR & TUBE* *M SKU EUROPE*	1
D	2777033	MTR/TUBE ASSY 80# 60" RT *MOTOR & TUBE* *M SKU EUROPE*	1
N	2777043	MTR/TUBE ASSY 80# 72" RT *MOTOR & TUBE* *M SKU EUROPE* *A SKU*	1
E	2777092	MTR/TUBE ASSY 112# 60" RT *MOTOR & TUBE*	1
F	2777094	MTR/TUBE ASSY 112# 72" RT *MOTOR & TUBE*	1
G	2777392	CTR HSG ASY, CB, 80#, SW, 54" TUBE *TUBE*	1
H	2777393	CTR HSG ASY, CB, 80#, SW, 60" TUBE *TUBE*	1
M	2777394	CTR HSG ASY, CB, 80#, SW, 54" TUBE *TUBE* *M SKU EUROPE*	1
J	2777395	CTR HSG ASY, CB, 80#, SW, 60" TUBE *TUBE* *M SKU EUROPE*	1
K	2777347	CTR HSG ASY, CB, 112#, SW, 60" TUBE *TUBE*	1
L	2777348	CTR HSG ASY, CB, 112#, SW, 72" TUBE *TUBE*	1
UU	2777391	CTR HSG TUBE ASY 80#, SW, 72" *TUBE* *M SKU EUROPE* *A SKU*	1
BB	1378132	80# THRUST PROP KIT	1
CC	1378160	112# THRUST PROP KIT	1
U	2889460	SEAL & O-RING KIT *80LB THRUST*	1
P	2881450	SEAL & O-RING KIT 112 *112LB THRUST*	1
Q	2774159 ♦	MOTOR KIT, iPLT 1.6 RT ULTERRA *i-PILOT RECEIVER*	1
R	2774158 ♦	MOTOR KIT, iP 3.0 RT ULTERRA *i-PILOT LINK RECEIVER*	1
S	2994075 ♦	REMOTE ASSY, IPILOT 1.6	1
T	2994076 ♦	REMOTE ASSY, IPILOT LINK *LINK ONLY*	1
Item	Part #	Description	Quantity
2	2307312	BEAD-FERRITE *M SKU* *EUROPE ONLY*	1
4	✘	TUBE-COMP,WHT,60",w/1/4" WALL	1
	✘	TUBE-COMP,WHT,72",w/1/4" WALL	1
	✘	TUBE-COMP,WHT,60", w/1/4" WALL	1
	✘	TUBE-COMP,WHT,54", w/1/4" WALL	1
	✘	TUBE-COMP,WHT,54",w/1/4" WALL	1
	✘	TUBE-COMP, WHT, 72" *M SKU*	1
▲	✘	SEAL,BUNG UPPER,SW	1
▲	✘	SEAL,BUNG LOWER	1
10	2262658	PIN-DRIVE 1" X 3/16" S/S	1
12	2091701	WASHER-PROP (LARGE)	1
14	2198401	ANODES, ZINC, 4.0"LWR UNIT	1
16	2341160	PROP-WW2 (4.5) w/ADP.RING *112 LB THRUST*	1
18	2331160	PROP-WW2 (4") w/ADP.RING *80 LB THRUST*	1

✘ This part is included in an assembly and cannot be ordered individually.

▲ Not shown on Parts Diagram.

♦ May only be available with i-Pilot or i-Pilot Link.

PARTS DIAGRAM & PARTS LIST

Item	Part #	Description	Quantity
20	2202507	CONTROL BOX BOTTOM, SW	1
22	2093400	SCREW-#10-24X1-7/8 PPH SS	1
24	2333101	NUT-HEX #10-24 UNC-2B NYL SS	1
26	2202635	PIN-DOWEL, 1/4" OD SS	1
28	2202335	PULLEY, BELT, TOP	1
30	2202800	BLOCK, BELT	1
32	2200800	BELT-RACK, LOWER	1
34	2201721	WASHER-#10 SAE, SS	1
36	2203411	SCREW-#10-24,SHCS,SS, RIE 4606	1
38	2333101	NUT-HEX #10-24 UNC-2B NYL SS	1
40	2305402	SHRINK TUBE-.374 OD X 2.25"	2
42	2224703	INSERT-PLUG, PD/AP WHITE *NO HOLE*	1
	2224705	INSERT-PLUG, WHT, I PILOT *LARGE HOLE*	1
44	2372100	SCREW-#8-18 X 5/8 THD* (SS	4
46	2203403	SCREW-#6 X 1.0 BRASS HI-LO	1
48	2390800 ♦	LANYARD w/CARABINEER,IP REMOTE	1
50	2996400 ♦	HEADING SENSOR ASSEMBLY	1
52	2200207	CONTROL BOX COVER, SW	1
54	2-100-214	ARM ASSY 24V 4" 80# (WW2) *80 LB THRUST*	1
56	2-100-245	ARMATURE ASY 4.5"LWR UNIT *112 LB THRUST*	1
58	140-010	BEARING - BALL *80 LB THRUST*	1
60	140-014	BEARING-BALL 6000 *112 LB THRUST*	1
62	✘	CTR HSG ASY 4.0 SW/WHT-MG *80 LB THRUST* *ASSEMBLY A, B, C, D OR U*	1
64	✘	CTR HSG ASY 4.5" MAG SW CB TER *112 LB THRUST* *ASSEMBLY E OR F*	1
66	2-300-370	BRUSH END HSG ASY SW/W 4.0 *80 LB THRUST*	1
68	2-300-156	BRUSH END HSG ASY 4.5" SW *112 LB THRUST*	1
70	421-376	HSG PLN END 4" SW WHT BS *80 LB THRUST*	1
72	421-241	PLAIN END HSG 4.5" PNTD SW *112 LB THRUST*	1
74	701-009	O-RING, THRU BOLT *80 LB THRUST* *112 LB THRUST*	2
76	701-043	O-RING *80 LB THRUST*	2
78	701-098	O-RING, 98MM X 2MM *112 LB THRUST*	1
80	701-103	O-RING,103MM X 3.00MM, 70 BUNA *112 LB THRUST*	1
82	830-027	SCREW - SELF-THREAD 10-32X2.25 *80 LB THRUST*	2
84	2053410	SCREW-#8-32 X 1/2 TRI-LOBE HEX *112 LB THRUST*	2
86	830-094	THRU BOLT 12-24 X10.31 *80 LB THRUST* *112 LB THRUST*	2
88	582-013	CLIP, RETAINING SHORT *80 LB THRUST*	1
90	582-016	CLIP-RETAINING, SONAR *112 LB THRUST*	1
92	973-025	SPACER - BRUSHPLATE *80 LB THRUST*	2
94	990-051	WASHER - STEEL THRUST *80 LB THRUST* *112 LB THRUST*	1

✘ This part is included in an assembly and cannot be ordered individually.

▲ Not shown on Parts Diagram.

♦ May only be available with i-Pilot or i-Pilot Link.

PARTS DIAGRAM & PARTS LIST

Item	Part #	Description	Quantity
96	990-052	WASHER - NYLATRON *80 LB THRUST* *112 LB THRUST*	1
98	992-010	WASHER - BELLEVILLE *80 LB THRUST*	2
100	992-011	WASHER-BELLEVILLE *112 LB THRUST*	2
102	990-045	SPACER - THRUST *80 LB THRUST*	1
104	990-011	WASHER-SHIM OD 1",ID.630"SS *112 LB THRUST*	1
106	188-094	BRUSH W/TERMINAL *80 LB THRUST*	2
108	188-095	BRUSH *112 LB THRUST*	2
▲	✘	BRUSH HOLDER *80 LB THRUST*	2
▲	✘	BRUSH HOLDER *112 LB THRUST*	2
114	738-004	BRUSH PLATE-4" terminal *80 LB THRUST*	1
116	738-011	BRUSH PLATE *112 LB THRUST*	1
▲	✘	RIVET-.25" *80 LB THRUST* *112 LB THRUST*	6
120	975-041	SPRING - TORSION *80 LB THRUST*	2
122	975-045	SPRING-TORSION *112 LB THRUST*	2
▲	✘	CONNECTOR 1/4 MALE TAB QD *80 LB THRUST*	2
▲	✘	TERMINAL 1/4" MALE TAB-THREE *112 LB THRUST*	2
128	640-025	LEADWIRE BLK 10 AWG 66 3/4 XLP *80 LB THRUST* *54*	1
	640-022	LEADWIRE BLK 10 AWG 72.5 XLP *80 LB THRUST* *60*	1
	640-045	LEADWIRE BLK 10AWG 76 1/2" GPT *112 LB THRUST* *60*	1
	640-049	LEADWIRE BLK 10AWG 88.50" GPT *112 LB THRUST* *72*	1
130	640-133	LEADWIRE RED 10AWG 66-1/4 XLP *80 LB THRUST* *54*	1
	640-126	LEADWIRE RED 10AWG 71" XLP *80 LB THRUST* *60*	1
	640-145	LEADWIRE RED 10AWG 75 7/8" GPT *112 LB THRUST* *60*	1
	640-149	LEADWIRE RED 10AWG 88" GPT *112 LB THRUST* *72*	1
132	2307312	BEAD-FERRITE *112 LB THRUST*	1
134	3393480	SCREW-#10 X 1.0" PPH HI-LOSS	4
136	2201505	COLLAR, BELT CLAMP	1
138	2201500	COLLAR, CLAMP	1
140	490389-1◆	CABLE, ETH (M12-M-M12-F, 30'	1
142	2373241◆	CABLE, USB REMOTE CHARGER LINK	1
144	2375901◆	ADAPTER, USB DC POWER LINK	1
148	2203800	STRAP, HOLD DOWN	1
150	2205509	DECAL-GENERIC, PUSH BTN TOP SW	1
152	2395521◆	DECAL, DOMED IPILOT SW	1
▲	2052510	CABLE CLAMP, 3/16", NYLON	2
154	888-025	SEAL	2
156	725-095	PAPER TUBE	1
158	144-017	BEARING	1

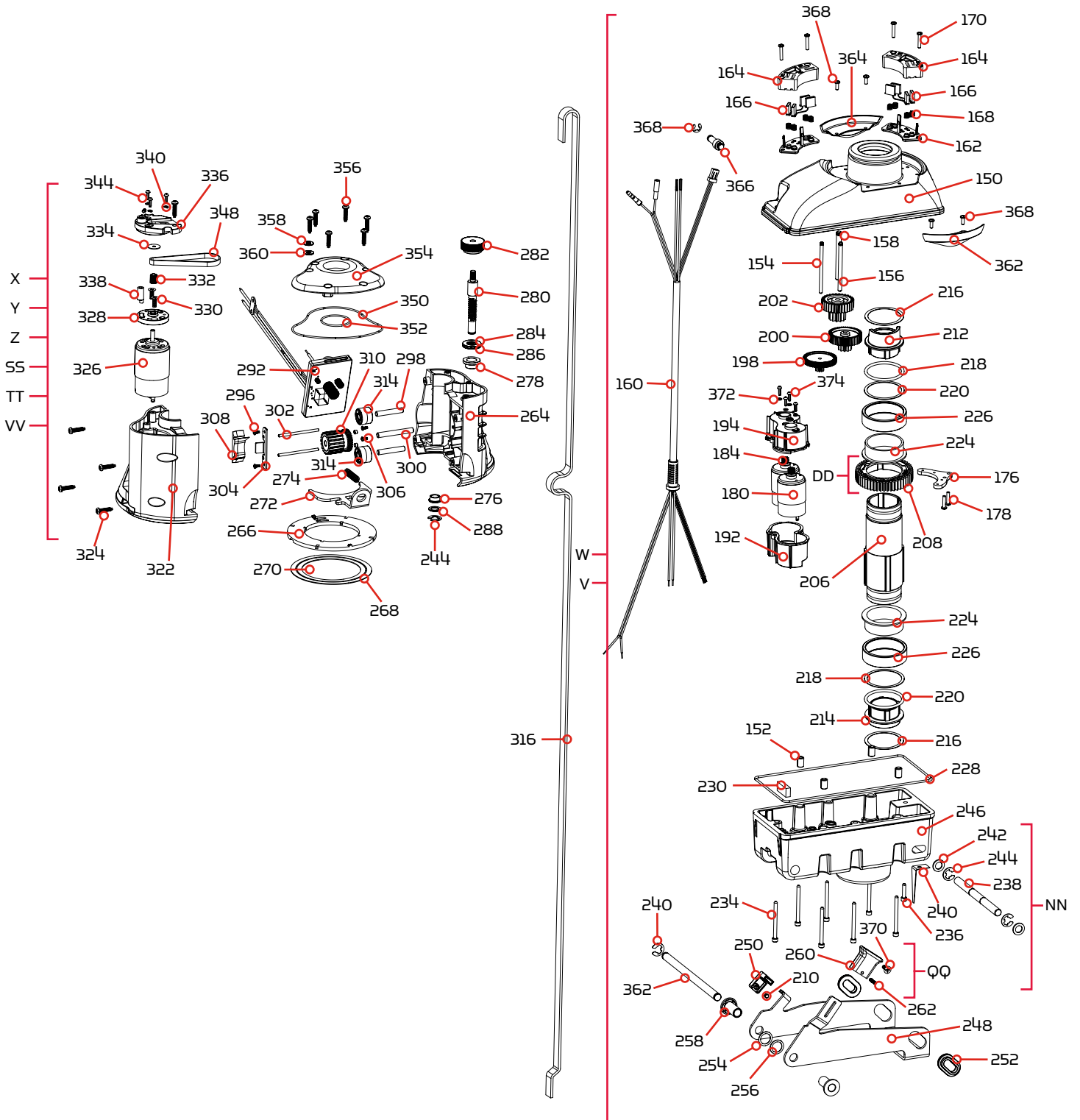
✘ This part is included in an assembly and cannot be ordered individually.

▲ Not shown on Parts Diagram.

◆ May only be available with i-Pilot or i-Pilot Link.

RIPTIDE ULTERRA STEERING HOUSING & TRIM HOUSING

Steering Housing & Trim Housing Parts Diagram



PARTS DIAGRAM & PARTS LIST

Steering Housing & Trim Housing Parts List

Assembly	Part #	Description	Quantity
V	2996524	ASM, STEERING 36V SW *112LB THRUST*	1
W	2996523	ASM, STEERING 24V SW *80LB THRUST*	1
X	2997825	ASSY,TRIM MOD "M",SW, 72" *M SKU* *EUROPE ONLY*	1
Y	2997821	ASSY,TRIM MODULE, SW, 72"	1
Z	2997824	ASSY,TRIM MOD "M",SW, 60" *M SKU* *EUROPE ONLY*	1
SS	2997804	ASSY,TRIM MODULE, SW, 60"	1
TT	2997808	ASSY,TRIM MODULE, SW, 54"	1
VV	2997828	ASSY,TRIM MOD "M",SW, 54" *M SKU* *EUROPE ONLY*	1
DD	2772200	OUTPUT GEAR W/MAGNETS	1
NN	2774202	TILT BRACKET ASSEMBLY	1
QQ	2770100	RELEASE KNOB WITH SCREW KIT	1
Item	Part #	Description	Quantity
150	✘	STEERING HSG COVER SW PNT	1
152	✘	PIN-ROLL 5/16" X 1/2"	4
154	✘	SHAFT-GEAR, FIRST CLUSTER	1
156	✘	SHAFT-GEAR,INTERMED.CLUSTER	1
158	✘	SHAFT-GEAR, THIRD CLUSTER	1
160	✘	LEADWIRE,STEERING MTR, 8 COND.	1
162	✘	INSULATOR, BLOCK-BRUSH	2
164	✘	BLOCK-BRUSH, SLIPRING	2
166	✘	BRUSH SHUNT ASSEMBLY	2
168	✘	SPRING-COMPRESSION, BRUSH	4
170	2203408	SCREW-#6-32 X .75" PPH, NYLON	4
176	2201920	BRACKET-SENSOR, STEERING HSG	1
178	2303412	SCREW-#6-20 X 5/8 SELF TAP	2
180	✘	MOTOR, STEERING 24V T2 *80LB THRUST*	1
	✘	MOTOR, STEERING 36V FW T2 *112LB THRUST*	2
182	2320321	WIRE EXTENSION, 112 MOTOR	2
184	2322215	GEAR-PINION, DR.HSG, STAGE 1	1
186	2051710	LOCKWASHER-SPLIT, 3MM, ZP	4
188	2053422	SCREW-M3-.5 X 10 PPH, ZPS	4
190	2043412	SCREW-#8-18 X 3/4 TY AB SS PPH	1
192	2322520	CASE-MOTOR,STRG HSG,TOP	1
194	2322525	CASE-MOTOR,STRG HSG,BTM	1
198	2322210	GEAR & PINION, DR.HSG, STAGE 2	1
200	2302250	GEAR & PINION,DR. HSG, STAGE 3	1

✘ This part is included in an assembly and cannot be ordered individually.

▲ Not shown on Parts Diagram.

◆ May only be available with i-Pilot or i-Pilot Link.

PARTS DIAGRAM & PARTS LIST

Item	Part #	Description	Quantity
202	2302255	GEAR & PINION,DR. HSG, STAGE 4	1
▲	9950433	TIE WRAP-4" BLACK(#21041)	1
206	2322031	TUBE-OUTPUT, SALTWATER	1
208	2322200	GEAR-OUTPUT	1
210	✘	MAGNET-.187X.125 NCKL PLT(N/A)	4
212	2201510	COLLAR-DRIVE, OUTPUT TUBE	1
214	2321510	COLLAR-DRIVE,BOTTOM	1
216	2321704	WASHER-THRUST, STEERING	4
218	2321720	SHIM,O-RING	2
220	2324608	O-RING,224,PD PRO STR HSG	2
224	2327314	BUSHING, PRO STEERING SW	2
226	2327315	BUSHING,ALUMIN. SPACER ST	2
228	2324604	O-RING, CASE SEAL	1
230	2308601	BREATHER FILTER, DR.HOUSING	1
232	2206550	HOUSING, CONNECTOR WPJ	1
234	2323408	SCREW-#8-32 X 2.0 SHCS SS	7
236	2323410	SCREW-#8-32 X .75 SHCS SS	1
238	2202626	PIN-LATCH, SS	1
240	2322702	SPRING, LATCH PIN SS	2
242	2321702	WASHER-FLAT .375 NYLON	2
244	2263011	E-RING 3/8 DIA. SHAFT*	2
246	✘	HOUSING-STEERING, BTM, SW	1
248	2201910	BRACKET, TILT, SS	1
250	2208601	HOLDER-MAGNET w/CONFORMAL COAT	1
252	2207305	BUSHING, LATCH PIN	2
254	2201730	WASHER-FLAT, .56 ID NYLON *BLACK*	1
256	2201731	WASHER-FLAT, NYLON *WHITE*	1
258	2207310	BUSHING,STEERING HSG, PIVOT	2
260	2200100	KNOB, TILT RELEASE	1
262	2383463	SCREW-#6-32 X .625"SET SS	1
264	✘	HOUSING-TRIM, GEAR SIDE, SW	1
266	✘	CARRIER, SLIPRING CONTACTS	1
268	✘	RING-CONTACT, SLIPRING LARGE	1
270	✘	RING-CONTACT, SLIPRING SMALL	1
272	✘	HANDLE, TRIM HSG RELS, SS	1
274	✘	SPRING-5/16" OD, SS	1
276	✘	BUSHING, TRIM, BOTTOM	1
278	✘	BUSHING-HAT 1/2"SHFT BRNZ	1

✘ This part is included in an assembly and cannot be ordered individually.

▲ Not shown on Parts Diagram.

◆ May only be available with i-Pilot or i-Pilot Link.

PARTS DIAGRAM & PARTS LIST

Item	Part #	Description	Quantity
280	✘	SHAFT-WORM	1
282	✘	PULLEY, TRIM JACKSHAFT, MACH.	1
284	✘	BEARING-THRUST, NEEDLE	1
286	✘	WASHER-THRUST, 1/2"	2
288	✘	WASHER-THRUST, 3/8"	1
290	✘	E-RING 3/8 DIA. SHAFT*	1
292	✘	BOARD ASSY, WIRELESS TRIM	1
	✘	BOARD ASSY, WIRELESS TRIM "M" *M SKU EUROPE*	1
296	✘	SCREW-#4-24 X 1/4 PHCR SS TY B	2
298	✘	PIN, BELT PULLEY	2
300	✘	PIN, 2' X 1/4"	1
302	✘	PIN-DOWEL, 1/8"	2
304	✘	BRACKET, DRIVE BLOCK	1
306	✘	SCREW-#4-24 X 1/4 PHCR SS TY B	2
308	✘	BLOCK, TUBE DRIVE	1
310	✘	GEAR/PULLEY-WORM, CLUSTER ASM	1
312	✘	MAGNET-.187X.125 NCKL PLT(N/A)	2
314	2202335	PULLEY, BELT, TOP	2
316	2770817	BELT-LIFT 54"	1
	2770818	BELT-LIFT 60"	1
	2770819	BELT-LIFT 72"	1
322	✘	HOUSING-TRIM, MOTOR SIDE, SW	1
324	3393481	SCREW-#10X.75"PPH HI-LO SS	4
326	✘	MOTOR, TRIM	1
328	✘	PLATE-ADAPTER, LIFT MOTOR	1
330	✘	SCREW-M4 X 10 PFH, ZP	2
332	✘	PULLEY, LIFT MOTOR, MACHINED	1
334	2201722	WASHER-#6, .625 OD, ZP STEEL	1
336	✘	PLATE-MOTOR	1
338	✘	TENSIONER-BELT	1
340	✘	SCREW-M3-.5 X 10 PPH, ZPS	3
342	✘	LOCKWASHER-SPLIT, 3MM, ZP	3
344	✘	SCREW-SET-#8-32 X 1/4" S/S	1
▲	✘	SCREW-#10X.75"PPH HI-LO SS	1
348	2200810	BELT-TRIM	1
350	2204602	O-RING, TRIM HOUSING COVER,WHT	1
352	2204601	O-RING, TRIM HOUSING	1
354	2206411	COVER, TRIM HOUSING, SW	1

✘ This part is included in an assembly and cannot be ordered individually.

▲ Not shown on Parts Diagram.

◆ May only be available with i-Pilot or i-Pilot Link.

PARTS DIAGRAM & PARTS LIST

Item	Part #	Description	Quantity
356	✘	SCREW-#10X.75"PPH HI-LO SS	6
358	3391732	WASHER, SEALING	6
360	3394602	WASHER-FLAT #8 SS	6
362	2202600	PIN-PIVOT,DRIVEHOUSING,SS	1
364	2205906	ADAPTER,STEERING HSG RGHT,WHT	1
366	2205901	ADAPTER,STEERING HSG LEFT,WHT	1
368	2332103	SCREW-#6-20 X 3/8 THD*(SS)	4
370	2203407	SCREW-#6-32 X .625" PFH, SS	1
372	2051710	SPLIT LOCK WASHER 3MM	4
374	2372103	SCREW-X6 X .375 PLASTITE SS	4

✘ This part is included in an assembly and cannot be ordered individually.

▲ Not shown on Parts Diagram.

◆ May only be available with i-Pilot or i-Pilot Link.