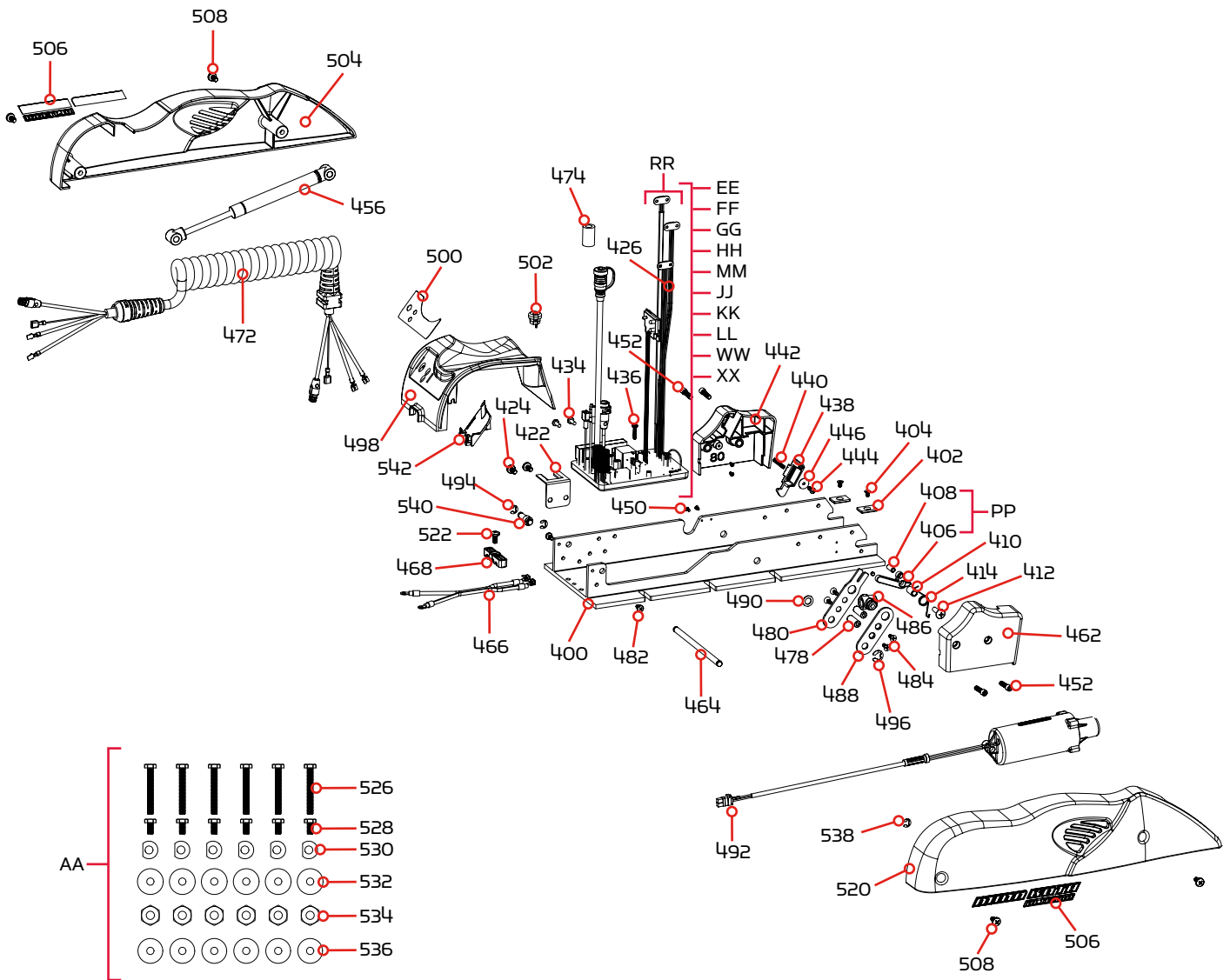


PARTS DIAGRAM & PARTS LIST

RIPTIDE ULTERRA MOUNT

Mount Parts Diagram



Mount Parts List

Assembly	Part #	Description	Quantity
EE	2774080	MAIN CTRL BD, US/AU/CA, 24V, 60" *80LB THRUST* *60*	1
FF	2774082	MAIN CTRL BD, US/AU/CA, 36V, 60" *112LB THRUST* *60*	1
GG	2774084	MAIN CTRL BD, EUR, 24V, 60" *80LB THRUST* *60* *M SKU EUROPE*	1
HH	2774086	MAIN CTRL BD, EUR, 36V, 60" *112LB THRUST* *60* *M SKU EUROPE*	1
MM	2774091	MAIN CTRL BD, US/AU/CA, 36V, 72" *112LB THRUST* *72*	1
JJ	2774090	MAIN CTRL BD, US/AU/CA, 24V, 54" *80LB THRUST* *54*	1
KK	2774092	MAIN CTRL BD, EUR, 24V, 54" *80LB THRUST* *54* *M SKU EUROPE*	1
LL	2774093	MAIN CTRL BD, EUR, 36V, 72" *112LB THRUST* *72* *M SKU EUROPE*	1
WW	2774094	MAIN CTRL BD, US/AU/CA, 24V, 72" *80LB THRUST* *72* *A SKU*	1
XX	2774096	MAIN CONTROL BRD, EUR, 24V, 72" *80LB THRUST* *72* *M SKU EUROPE*	1
AA	2994917	BAG ASSY, ULTERRA MTG HARDWARE	1
PP	2777901	CAM W/MAGNET, SPRING PIN	1
RR	2880350	SENSOR WIRE W/BUTT CONNECTORS	1
Item	Part #	Description	Quantity
400	2201902	BASE, MACHINED, SW	1
402	2205105	PAD, STOP	2
404	2203421	SCREW-#10-24X 5/16 PFH SS	2
406	2207901	CAM,PIN SNSR w/CNFML COAT	1
408	2262632	PIN-SPRING 1/4" X 5/8" SS	1
410	2201702	SPACER, PIN SENSOR	1
412	9280710	HDW SCR 1/4 20X7/8 TRUSS PHIL	1
414	2042711	SPRING-TORSION, SS	1
422	2200820	CLIP-CORD, SS	1
424	2323405	SCREW-1/4-20 X 1/2" MCH SS	2
426	✘	CONTROL BOARD ASSY, MAIN *ASSEMBLY FF, GG, HH, MM, JJ, KK OR LL*	1
428	2305403	SHRINK TUBE-.500 IDX1.0" ADHSV	4
430	2305415	SHRINK TUBE .472 ADHESIVE LINED	1
432	2305410	SHRINK TUBE-.315 OD X 2.25"	2
434	2323406	SCREW-#10-24 X .50 CRPH SS	2
436	2373487	SCREW-#8-32 X 3/4" PPH MACH SS	1
438	2203701	PLUNGER, RAMP w/CONFORMAL COAT	1
440	2202703	SPRING, PLUNGER-RAMP	1
442	2203915	RAMP-MOTOR, LEFT, 112# *112 LB THRUST*	1
	2203916	RAMP-MOTOR, LEFT, 80# *80 LB THRUST*	1
444	2301310	SCREW-#8-18 X 1/2 (SS)*	1
446	2201723	WASHER-#6, .625 OD, SS	1
448	2373440	SCREW-#4-24 X 1/4 PHCR SS TY B	2

✘ This part is included in an assembly and cannot be ordered individually.

▲ Not shown on Parts Diagram.

◆ May only be available with i-Pilot or i-Pilot Link.

PARTS DIAGRAM & PARTS LIST

Item	Part #	Description	Quantity
452	2263453	SCREW-1/4-20 X 1" SHCS S/S	4
▲	2200825	CLIP, SENSOR CABLE	2
456	2208803	DAMPER, SS, 112# *112 LB THRUST*	1
	2208801	DAMPER, SS, 80# *80 LB THRUST*	1
460	2263006	E-RING,5/16,S/S GAS ASSIST	2
462	2203910	RAMP-MOTOR, RIGHT, 112# *112 LB THRUST*	1
	2203911	RAMP-MOTOR, RIGHT, 80# *80 LB THRUST*	1
464	2202605	PIN, ACTUATOR, SS	1
466	2090651	LEADWIRE,10 GA,PD	1
468	2321310	STRAIN RELIEF	1
472	2991275	COIL CORD ASY 72" NON-US *72*	1
	2991271	COIL CORD ASY 54/60" NON-US *54* *60*	1
474	2307313	BEAD-FERRITE	1
▲	2256300	TIE WRAP-5.5" BLACK	2
478	2202901	STANDOFF, LIFT ARM	2
480	2204200	ARM-LIFT, INNER, SS	1
482	2383447	SCREW-#10-32 X 3/8" PPH SS	2
484	2203410	SCREW-#10-32 X .5"	4
486	2203100	NUT, TILT MOTOR	1
488	2204205	ARM-LIFT, OUTER, SS	1
490	2321702	WASHER-FLAT .375 NYLON	1
492	2997813	ASSEMBLY, TILT MOTOR	1
494	2263006	E-RING,5/16,S/S GAS ASSIST	1
496	2263011	E-RING 3/8 DIA. SHAFT*	1
498	2206511	HOUSING-CONTROL, WHITE	1
500	2205601	DECAL-B.METER/CON/PWR, SW WHT	1
502	2202910	STRAIN RLF,HEYC SR 6N3-4	1
504	2203906	SIDEPLATE, LEFT, SW	1
506	2205512	DECAL,SIDEPLATE,SW ULTERRA,T2	2
508	2323405	SCREW-1/4-20 X 1/2" MCH SS	4
520	2203901	SIDEPLATE, RIGHT, SW	1
522	2323405	SCREW-1/4-20 X 1/2" MCH SS	1
▲	2256300	TIE WRAP-5.5" BLACK	1
526	2203430	SCREW-1/4-20 X 2.0 HHCS SS	6
528	2203431	SCREW-1/4-20 X 0.5 HHCS SS	6
530	2201725	WASHER-CLIPPED, 1/4", 1.00" OD	6
532	2261713	WASHER-1/4 FLAT 18-8 SS	6
534	2263103	NUT-1/4-20 NYLOCK SS	6

✘ This part is included in an assembly and cannot be ordered individually.

▲ Not shown on Parts Diagram.

◆ May only be available with i-Pilot or i-Pilot Link.

PARTS DIAGRAM & PARTS LIST

Item	Part #	Description	Quantity
536	2301720	WASHER-MOUNTING - RUBBER	6
538	2263006	E-RING,5/16,S/S GAS ASSIST	1
540	2202903	STANDOFF,OIL DAMPENER,SW	2
542	2200823	CLIP, POWER BUTTON	1

- ✘ This part is included in an assembly and cannot be ordered individually.
- ▲ Not shown on Parts Diagram.
- ◆ May only be available with i-Pilot or i-Pilot Link.