

PARTS DIAGRAM & PARTS LIST

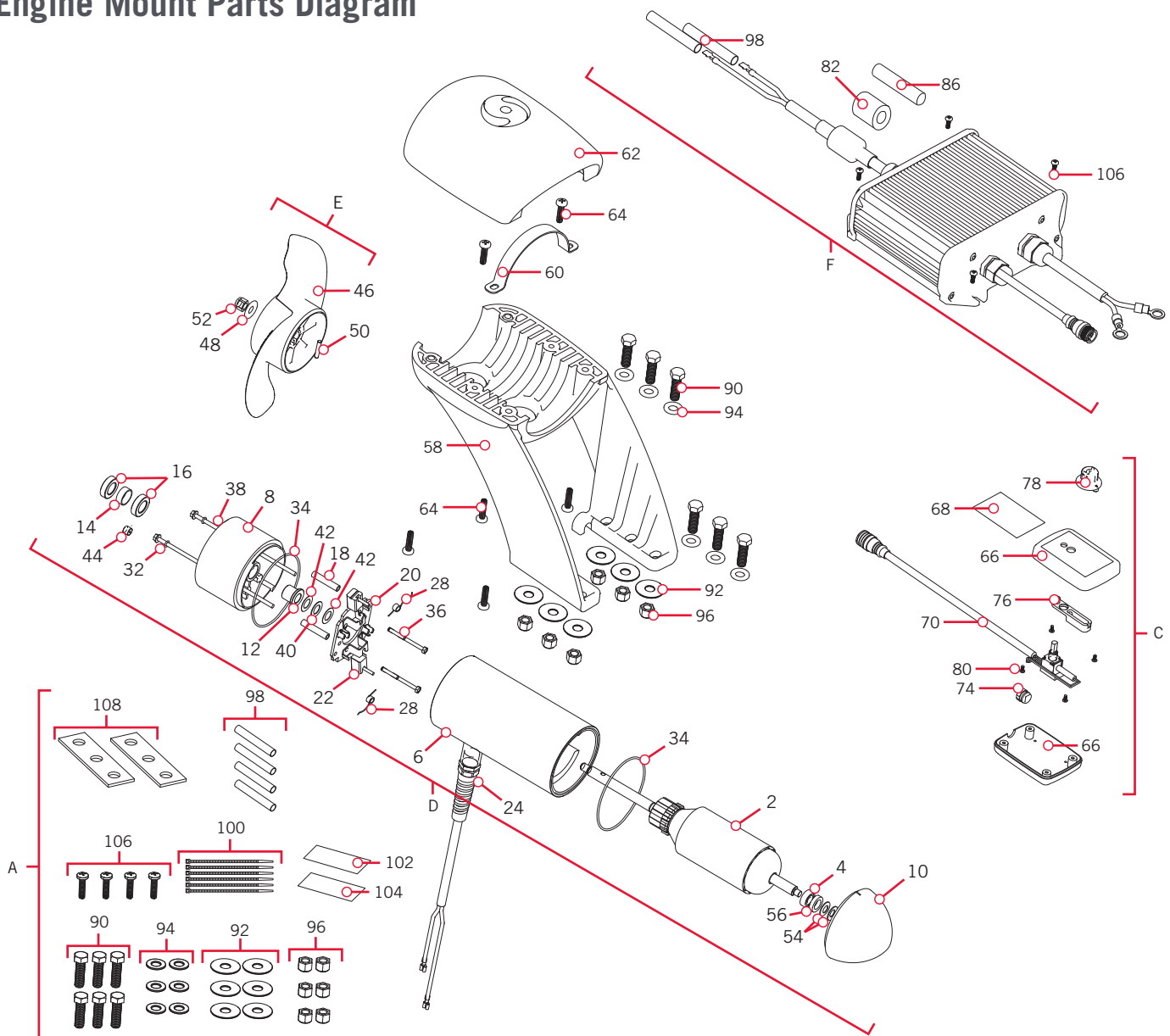
ENGINE MOUNT

24 VOLT

The parts diagram and parts list provides Minn Kota® WEEE compliance disassembly instructions. For more information about where you should dispose of your waste equipment for recycling and recovery and/or your European Union member state requirements, please contact your dealer or distributor from which your product was purchased. Tools required, but not limited to: flat head screwdriver, Phillips screwdriver, socket set, pliers, wire cutters.

ENGINE MOUNT MOTOR >

> Engine Mount Parts Diagram



PARTS DIAGRAM & PARTS LIST

» Engine Mount Parts List

Assembly	Part #	Description	Quantity
A	2994856	BAG ASSY, EM	1
C	2990239	HAND CONTROLLER ASSY, EM	1
D	2396234	MTR ASY 24V 4" 80# SW	1
E	1378132	PROP KIT PWR PRP	1
F	2990247	CTRL MOD ASSY 24/36V, SINGLE	1
G	2889460	SEAL & O-RING KIT *4.0*	1
Item	Part #	Description	Quantity
2	2-100-234	ARM ASSY 24V 4" 80#	1
4	140-010	BEARING - BALL	1
6	2-200-398	CTR HSG ASY 4.0	1
8	2-300-349	BRUSH END HSG ASY 4"	1
10	421-376	PLAIN END HSG 4"	1
12	144-017	BEARING - FLANGE	1
14	725-095	PAPER TUBE - SEAL BORE	1
16	880-025	SEAL	2
18	973-025	SPACER-BRUSH PLATE	2
20	2-600-234	BRUSH PLATE ASSEMBLY 4" EM	1
22	188-094	BRUSH ASSEMBLY	2
24	640-234	LEADWIRE ASSEMBLY 10 AWG	1
28	975-041	SPRING - TORSION	2
32	701-009	O-RING	2
34	701-043	O-RING	2
36	830-027	SCREW - SELF-THREAD	2
38	830-094	THRU BOLT 12-24 X 10.31	2
40	990-051	WASHER-STEEL THRUST	1
42	990-052	WASHER-NYLATRON	2
44	836-001	PLUG ALUMINUM 1/8 X 27 NPT	1
46	2331160	PROP-PWR 4" REAMED	1
48	2091701	WASHER-5/16 STD (S/S)	1
50	2262658	PIN-DRIVE 1" LG (SS)	1
52	2198401	ANODES, ZINC, 4.0" LWR UNIT	1
54	992-010	WASHER BELLEVILLE	2
56	990-045	SPACER-THRUST	1
58	2381940	BRACKET, LOWER MOUNT	1
60	2383810	STRAP, EM	1
62	2380215	CAP-TOP (EM) SW	1
64	2383418	SCREW-1/4-10 X 1" PPH SS PLST	6

✘ This part is included in an assembly and cannot be ordered individually.

▲ Not shown on Parts Diagram.

PARTS DIAGRAM & PARTS LIST



Item	Part #	Description	Quantity
66	✘	ENCLOSURE, HAND CONTROL, EM	1
68	✘	DECAL-HAND CONTROL, EM	1
70	✘	CABLE/POT ASSY, EM	1
74	✘	DETENT, EM	1
76	✘	HOUSING-DETENT, EM	1
78	✘	KNOB, EM HAND CONTROL ASSY	1
80	✘	SCREW-#4-24 X 3/8 HI-LO SS	4
82	2307310	BEAD-FERRITE PD/AP	1
86	2075401	SHRINK TUBING, 1.5 OD(CUT)(N/A)	1
88	2385810 ▲	LABEL, 12V-RED SUPPLIER	1
90	2383422	SCREW-3/8-16 X 1 1/4 HHCS SS	6
92	2381726	WASHER-FENDER 3/8 X 1 1/4" SS	6
94	2381728	WASHER-FLAT 3/8" THICK SS SAE	6
96	2383122	NUT 3/8-16 NYLON INST LOCKNUT	6
98	2375401	SHRINK TUBE, 2.00 X 3/8	4
100	2256300	TIE WRAP-5.5" BLACK	6
102	9950950	HOOK-1.5" X 2" HOOK & LOOP, BLK	1
104	9950953	LOOP-1.5" X 2" HOOK & LOOP, BLK	1
106	2373427	SCREW-BOAT-#12 X 5/8 PPH (N/A)	4
108	2385110	INSULATOR PAD, EM	2
110	2014800 ▲	BAG-ZPLCK (4X6) 4ML CLEAR	1
112	2014830 ▲	BAG-16X24 1 ML STATIC FREE PLS	1
114	2387110 ▲	MANUAL, RT/EM	1
116	2384938 ▲	PARTS LIST, RT 80 EM	1
118	9953310	TIE WRAP-8.5"	1

✘ This part is included in an assembly and cannot be ordered individually.

▲ Not shown on Parts Diagram.

