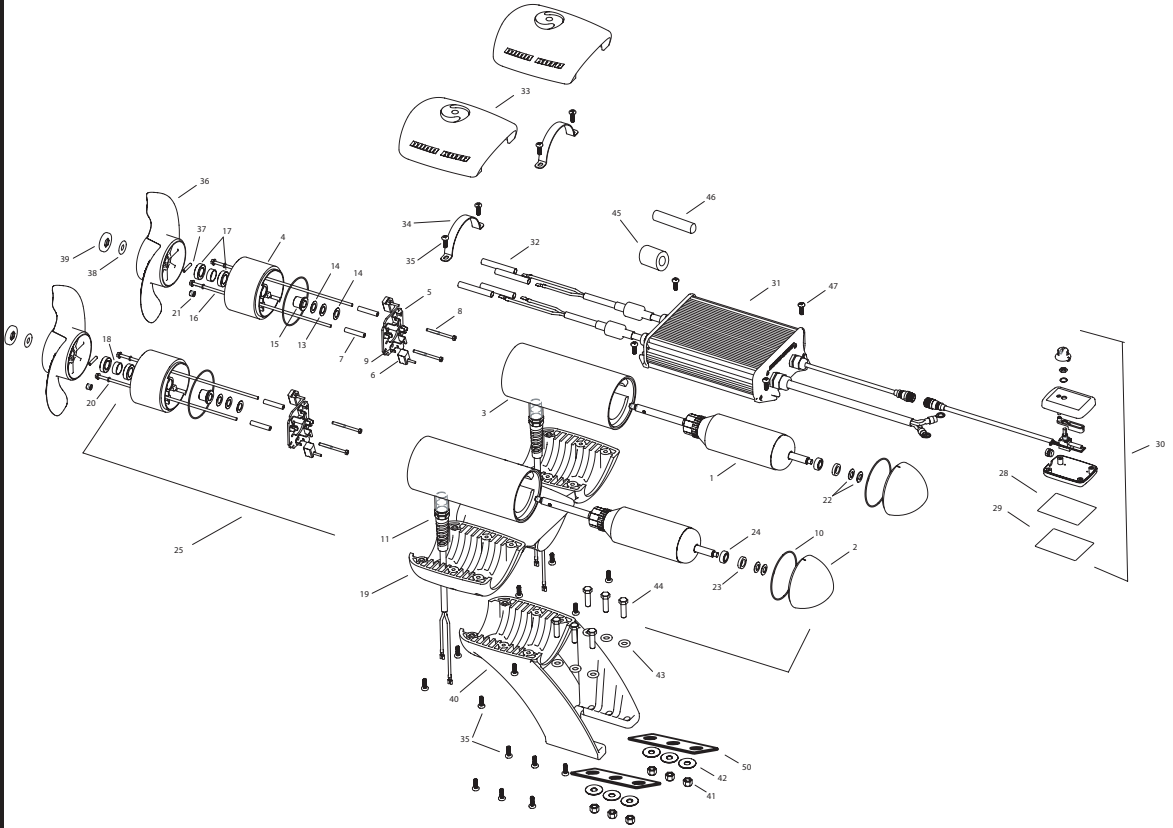


EM Riptide 160 24V Dual

This page provides MinnKota® WEEE compliance disassembly instructions. For more information about where you should dispose of your waste equipment for recycling and recovery and/or your European Union member state requirements, please contact your dealer or distributor from which your product was purchased.

Tools required but not limited to: Flat Head screw driver, Phillips screw driver, Socket set, Pliers, wire Cutters.



In the U.S.A., replacement parts may be ordered directly from the MINN KOTA Parts Dept., 121 Power Drive, P.O.Box 8129, Mankato, Minnesota 56002-8129. In Canada, parts may be ordered from any of the Canadian Authorized Service Centers shown on the enclosed list. Be sure to provide the MODEL and SERIAL numbers of your motor when ordering parts. Please use the correct part numbers from the parts list. Payment for any parts ordered from the MINN KOTA parts department, may be by cash, personal check, Discover Card, MasterCard or VISA. To order, call 1-800-227-6433 or FAX 1-800-527-4464.

Hors de États-Unis, voir la liste ci-jointe pour le Centre de Service Agréé MINN KOTA le plus proche. Lors d'une commande, ne pas oublier de fournir le numéro de modèle et le numéro de série du moteur. Toujours mentionner le numéro de pièce exact figurant sur la liste des pièces de rechange.

| | | |
|----|-----------|---|
| 1 | 2-100-234 | ARMATURE 24V 4.0 [1 PER MOTOR] |
| 2 | 421-376 | PLAIN END [1 PER MOTOR] |
| 3 | 2-200-398 | CENTER HOUSING ASSEMBLY [1 PER MOTOR] |
| 4 | 2-300-349 | BRUSH END HOUSING (CONTAINS 4, 15, 17, 18) |
| 5 | 2-600-234 | BRUSH PLATE ASSEMBLY (CONTAINS 5, 6, 9) |
| 6 | 188-094 | BRUSH [2 PER MOTOR] |
| 7 | 973-025 | SPACER - BRUSH PLATE [2 PER MOTOR] |
| 8 | 830-027 | SCREW #10-32 X 2 SLF THREAD [2 PER MOTOR] |
| 9 | 975-041 | BRUSH SPRING [2 PER MOTOR] |
| 10 | 701-043 | O-RING [2 PER MOTOR] |
| 11 | 2772917 | LEADWIRE ASSEMBLY [1 PER MOTOR] |
| 13 | 990-051 | WASHER STEEL [1 PER MOTOR] |
| 14 | 990-052 | WASHER NYLATRON [1 PER MOTOR] |
| 15 | 144-017 | FLANGE BEARING [1 PER MOTOR] |
| 16 | 830-094 | THRU-BOLT 12-24 X 10.31 [2 PER MOTOR] |
| 17 | 880-025 | SEAL [2 PER MOTOR] |
| 18 | 725-095 | PAPER TUBE [1 PER MOTOR] |
| 19 | 2381945 | BRACKET, DUAL MOUNT |
| 20 | 701-009 | O-RING THRU-BOLT [2 PER MOTOR] |
| 21 | 836-001 | ALUMINUM PLUG [1 PER MOTOR] |
| 22 | 992-010 | SPRING WASHER [2 PER MOTOR] |
| 23 | 990-045 | THRUST SPACER [1 PER MOTOR] |
| 24 | 140-010 | BALL BEARING [1 PER MOTOR] |
| 25 | 2396234 | MOTOR ASSY 24V 4.0 80# [2 EA] |
| 28 | 9950953 | VELCRO 1.5 X 2.0 LOOP |
| 29 | 9950950 | VELCRO 1.5 X 2.0 HOOK |
| 30 | 2990241 | HAND CONTROLLER |
| 31 | 2990238 | CONTROL MODULE |
| 32 | 2385401 | SHRINK TUBE [4 EA] |
| 33 | 2380211 | TOP CAP [2 EA] |
| 34 | 2383810 | STRAP, EM [2 EA] |
| 35 | 2383418 | SCREW 1/4-20 SELF TAPPING [18 EA] |
| ■ | 1378132 | PROP KIT [1 PER MOTOR] |
| 36 | 2331160 | PROPELLER [1 PER MOTOR] |
| 37 | 2262658 | DRIVE PIN [1 PER MOTOR] |
| 38 | 2091701 | WASHER, PROP LARGE [1 PER MOTOR] |
| 39 | 2198401 | NUT, PROP [1 PER MOTOR] |
| 40 | 2381941 | LOWER BRACKET (DUAL MOTOR MOUNT) |
| 41 | 2383122 | NUT 3/8-16 NYLOCK [6EA] |
| 42 | 2381726 | WASHER FENDER 3/8 X 1 1/4 OD [3 EA] |
| 43 | 2381728 | WASHER 3/8 [3 EA] |
| 44 | 2383422 | SCREW 3/8 X 1 1/4 [6EA] |
| 45 | 2307310 | FERRITE BEAD [2 EA] (EUROPEAN MOTORS ONLY) |
| 46 | 2075401 | HEATSHRINK [2 EA] (EUROPEAN MOTORS ONLY) |
| 47 | 2373427 | SCREW #12 X 5/8 [4 EA] |
| 50 | 2385110 | INSULATOR PAD, EM |
| ■ | 2994856 | BAG ASSY (CONTAINS 38-41,32,28,29,47,50 & TIE WRAPS) [2 EA] |

* This item is part of an assembly. This item cannot be sold separately due to machining and /or assembly that is required.