

SERIAL NUMBER FORMAT

- › 2008 & Earlier Serial Numbers – These serial numbers started with 4 letters and 7 numbers. They would have a format of WWAH1234567. The first two letters could change depending on the product. The last two will change depending on the year.

First Two Letters = Product	Last Two Letters = Year	
MK – Minn Kota	AA – 2000	AF – 2005
CN - Cannon	AB – 2001	AG – 2006
WW – Weedless Wedge 2 Models	AC – 2002	AH – 2007
CP – Co-Pilot	AD – 2003	AI – 2008
DH – DeckHand	AE – 2004	

- › 2009 & After Serial Numbers – These serial numbers will start with a letter, 3 numbers, 2 letters, and 5 numbers.

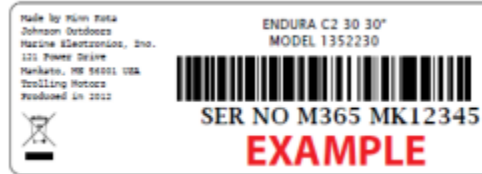
J	001	MK	99999
Year Code	Day 001-365	Product Category	Individual Serial #
Product Category		Year Code	
MK – Minn Kota, Talon, Raptor, or Battery Charger		J – 2009	Q – 2016
CN – Cannon		K – 2010	R – 2017
UM – i-Pilot or Battery Chargers		L – 2011	S – 2018
AI – Battery Chargers		M – 2012	T – 2019
FR – Factory Reconditioned		N – 2013	U – 2020
JU – DeckHand		O – 2014	V – 2021
CP – Co-Pilot		P – 2015	W – 2022

- › 2022 & After Serial Numbers – These serial numbers will be a 5 digit date, 1 letter for the product category, followed by 5 numbers. The 5 digit date code will be YYDDD.
EXAMPLE 22001M12345 = MANUFACTURE DATE OF THE 1ST OF JANUARY 2022.

22	001	M	99999
Year Code	Day 001-365	Product Category	Individual Serial #
Product Category		Year Code	
M – Minn Kota	P - Prototype	22 – 2022	
C – Cannon	A – Battery Chargers	23 – 2023	
L – Co-Pilot	U – iPilot & Battery Chargers	24 – 2024	
F – Factory Reconditioned	J - Deckhand	25 – 2025	

› **HOW TO FIND YOUR SERIAL NUMBER ON MODELS PRODUCED FROM OCTOBER OF 2009 TO PRESENT**

All Minn Kota® products come with an adhesive label that lists the serial and model numbers. Please use this list as a guide for finding your serial number. The serial number format is J123MK12345 or 22001M012345.



TROLLING MOTORS

EDGE, MAXXUM, FORTREX, ULTREX:
NEAR THE MOMENTARY SWITCH ON THE UNDERNEATH SIDE OF THE PEDAL

E-DRIVE:
AT THE TOP OF THE MAIN EXTRUSION, UNDERNEATH THE STEERING ARM

ENGINE MOUNT:
UNDERNEATH THE BRACKET

ENDURA/ENDURA C2/ENDURA MAX:
ON THE TOP OF THE TRANSOM BRACKET

PONTOON ELECTRIC STEER:
INSIDE THE MOUNT BASE BELOW THE MOTOR REST

PONTOON HAND CONTROL:
UNDER THE TILLER HANDLE

POWERDRIVE/ POWERDRIVE V2/ RIPTIDE POWERDRIVE:
INSIDE THE MOUNT BASE BELOW THE MOTOR REST

TERROVA / RIPTIDE TERROVA:
INSIDE THE MOUNT BASE BELOW THE MOTOR REST

TRAXXIS:
UNDER THE TILLER HANDLE

ULTERRA / RIPTIDE ULTERRA:
INSIDE THE MOUNT BASE BELOW THE MOTOR REST

ULTREX:
NEAR THE MOMENTARY SWITCH ON THE UNDERNEATH SIDE OF THE PEDAL

RIPTIDE EDGE, MAXXUM, FORTREX:
UNDER THE TILLER HANDLE

RIPTIDE TRANSOM MOUNT 80, 112:
UNDER THE TILLER HANDLE

RIPTIDE TRANSOM MOUNT 40, 45, 55:
ON THE TOP OF THE TRANSOM BRACKET

VANTAGE:
INSIDE THE MAIN TRANSOM BRACKET

BATTERY CHARGERS

ALL DIGITAL, PRECISION (PC & PCL) & ALTERNATOR CHARGERS:
ATTACHED TO THE AC POWER CORD OR THE BOTTOM OF THE CHARGER

PORTABLE CHARGERS:
ON THE BOTTOM OF THE CHARGER



HOW TO FIND YOUR SERIAL NUMBER ON MODELS PRODUCED FROM OCTOBER OF 2009 TO PRESENT

SHALLOW WATER ANCHORS

TALON 6' & 8':
OPPOSITE SIDE OF TALON MOTOR COVER

TALON 10', 12', & 15':
UNDERNEATH THE TALON MOTOR COVER ON THE FRONT OF THE EXTRUSION

RAPTOR:
ON THE MOUNTING BRACKET BENEATH THE ARM

I-PILOT / I-PILOT LINK WIRELESS GPS TROLLING SYSTEM

i-Pilot / i-Pilot Link Accessories:
UNDERNEATH THE CONTROL BOX COVER

ACCESSORIES

CORDED FOOT PEDALS:
BOTTOM OF THE FOOT PEDAL

COPILOT SYSTEM (LEGACY, 2006 & PRIOR):
THE INSIDE OF THE SIDE PLATE

COPILOT SYSTEM (TERROVA):
ON THE RECEIVER CONTROL BOARD INSIDE THE SIDE PLATE

DECKHAND ANCHOR WINCHES 25, 25R, 40:
ON THE SIDE OF THE METAL FRAME UNDER THE PLASTIC COVER

› HOW TO FIND YOUR SERIAL NUMBER ON MODELS PRODUCED PRIOR TO OCTOBER OF 2009

All Minn Kota® products come with an adhesive label that lists the serial and model numbers. Please use this list as a guide for finding your serial number. The serial number format is MKAD1234567

TROLLING MOTORS
ENDURA: ON THE DEPTH COLLAR OR ON THE TOP OF THE BRACKET
MAXXUM PRO: UNDERNEATH THE CONTROL BOX
MAXXUM TRANSOM MOUNT: ON THE DEPTH COLLAR OR ON THE TOP OF THE BRACKET
POWERDRIVE GRIP GLIDE: UNDERNEATH THE CONTROL BOX
VECTOR / VECTOR 3X: ON THE TOP OF THE TRANSOM BRACKET OR UNDERNEATH THE CONTROL BOX
RIPTIDE POWERDRIVE: UNDERNEATH THE CONTROL BOX
RIPTIDE PRO: ON THE DEPTH COLLAR
RIPTIDE 3X: ON THE DEPTH COLLAR
DECKHAND ANCHOR WINCHES
DECKHAND 15: ON THE SIDE OF THE METAL FRAME UNDER THE PLASTIC COVER
BATTERY CHARGERS
MK 106 / 106D, 110 / 110D / 110 PORTABLE, MK 210 / 210D / 210 PORTABLE, MK 220 / 220D, MK 330 / 330D: ON THE BOTTOM OF THE CHARGER
MK 230, MK 345 / 345D, MK 440 / 440D, MK460, 460D ON THE FRONT OF THE CHARGER BY THE OUTPUT CORDS
PORTABLE CHARGERS: ON THE BOTTOM OF THE CHARGER