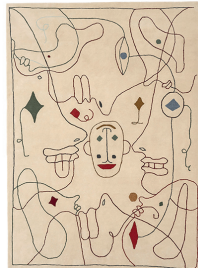


# nanimarquina

## Silhouette Tufting

Design by Jaime Hayon



200x300



170x240



**Wet cleaning**  
Limpieza en húmedo



**Dry cleaning not recommended**  
Lavado en seco no recomendado

**Fiber.** 100% New Zealand wool  
**Technique.** Hand tufted  
**Density.** 56,000 knots/m<sup>2</sup>  
**Wool pile height.** 14 mm  
**Total height.** 20 mm  
**Weight.** 4.50 kg/m<sup>2</sup>

**Fibra.** 100% Lana de Nueva Zelanda  
**Técnica.** Hand tufted  
**Densidad.** 56.000 nudos/m<sup>2</sup>  
**Altura pelo.** 14 mm  
**Altura total.** 20 mm  
**Peso.** 4,50 kg/m<sup>2</sup>



**Special sizes available.**  
**Ask for terms and conditions of delivery.**

Disponible en medidas especiales.  
Consultar condiciones y plazos de entrega.



This rug meets the ASTM E648 and CFR 16 PART 1630/1631 reaction to fire standards requirements for floors. This rug meets the CAL PROP 65 ensuring that is free of harmful substances. To meet ADA regulation, the design can be adapted to the correct pass of wheelchairs by reducing the rug pile height (PH 5/7 mm – TH 12 mm).