

# mdf italia



© COPYRIGHT 2023 MDF ITALIA SRL SOCIETA' UNIPERSONALE

2020-2022

## NVL TABLE

Designed by Jean Nouvel Design

A mono-material table, with contemporary lines and characterized by a strong personality.

The distinctive features of Jean Nouvel's architecture are fully manifested in this table and enhance the stylistic elements that have always distinguished his work: pure geometric shapes, formal lightness, graphic lines, rigour.

The simplicity of the shapes harmoniously dialogues with the solidity of the material and plays with contrasts: the tabletop appears thin and light and seems floating above the base.

The central support is composed of two volumes that thin upwards and create two symmetrical bases that support the top, thus recalling the principle of trilith, a structure consisting of two vertical elements supporting a third element set horizontally across the top.

NVL Table becomes part of the MDF Italia collection, enriching the tables collection and offering a new solution for domestic and contract environments.

Simple and elegant, thanks to its round shape it encourages the conviviality among guests in dining rooms or living rooms. In its oval shape it fits perfectly in contract and working contexts, such as executive offices, meeting and representative rooms, encouraging the exchange of ideas between the participants. Whether in the lacquered, glossy or matt version or in the materic variants in reconstructed black Ebony and white Carrara marble or reconstructed stone, NVL Table reveals its extreme elegance in any environment.

Today, NVL Table extends its range with a new dimension: the two symmetrical bases are spaced apart to support a 3-metre top.

The new version fits with ease into large living rooms, meeting rooms, executive offices and all those environments where gathering many people around a table is the order of the day.

[DOWNLOAD NVL TABLE CATALOGUE](#)

## DIMENSIONS AND TYPES

Each table mounts bases of different sizes and types.

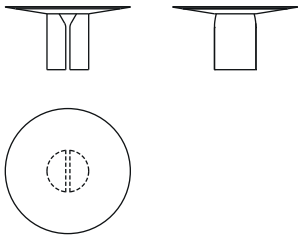
Table 74 cm high and available in the round model (diameters 150 or 180 cm) or the oval model (W200, W250 or W300).

## FINISHES

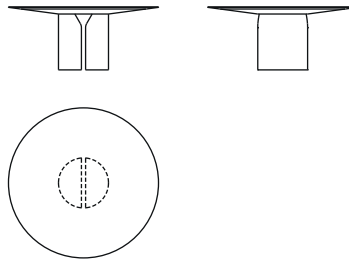
The bases, undertop flange and top are always monochromatic, lacquered or faced with the application of 3 mm slabs, in the variants:

- matt lacquer in white, black and red;
- glossy lacquer in white, black, red, coral red, dune and English green;
- materials in the variants reconstructed black Ebony marble, reconstructed white Carrara marble and reconstructed stone;
- reconstructed stone white Calce and reconstructed stone black slate.

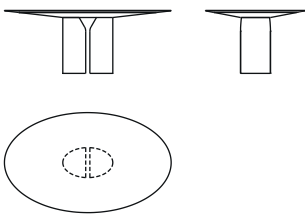
**NVL TABLE**



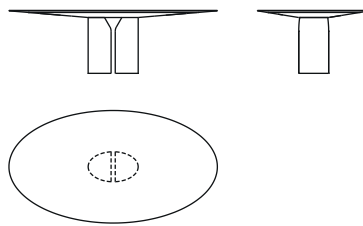
**round table**  
Ø150 H74 cm  
base L50 D50



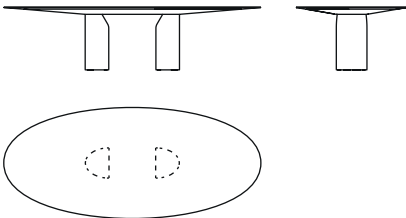
**round table**  
Ø180 H74 cm  
base L60 D60



**oval table**  
L200 D120 H74 cm  
base L36 D36



**oval table**  
L250 D130 H74 cm  
base L60 D36



**oval table**  
L300 D130 H74 cm  
base L110 D36

# Finishing

The number in the dot corresponds to the number of colour/material finish.

Here below, in the section FINISH OPTIONS, please note all the colours of the materials used for this product.

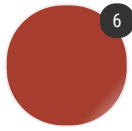
## TABLE

---

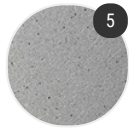
### Top/Structure



Matt lacquered



Gloss lacquered



Material

# Finish options

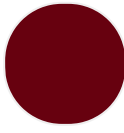
## TOP/STRUCTURE

---

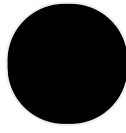
### Matt lacquered



White X042



Red

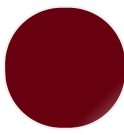


Black

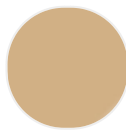
### Gloss lacquered



Coral red



Red



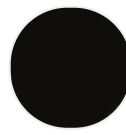
Dune



White



English green



Black

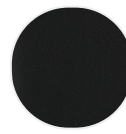
### Material



Reconstructed  
marble black  
ebony X111



Reconstructed  
marble white  
Carrara X120



Reconstructed  
stone black  
slate X132



Reconstructed  
stone white  
Calce X131



Reconstructed  
stone X084