

**BEN
SEN**

Outdoor Fabrics

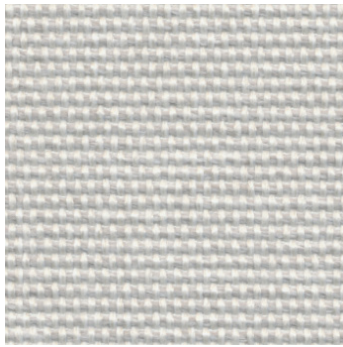
2020

BENSEN Fabrics & Leathers

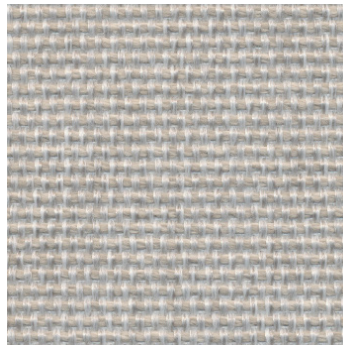
Category	Fabric Collection	
01	P 3 - 4	Strada
02	P 6 - 7	Borabora

Category

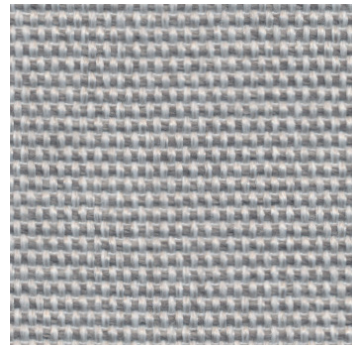
01



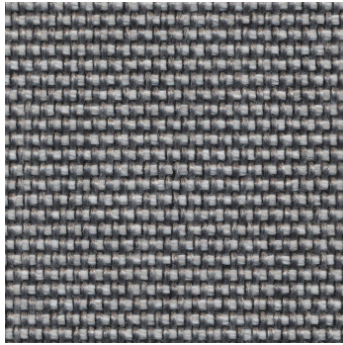
07



16



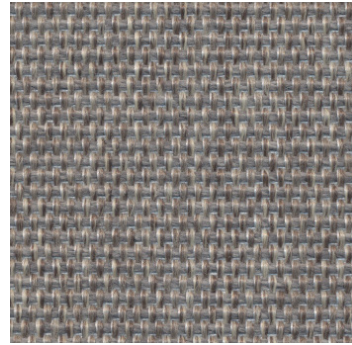
80



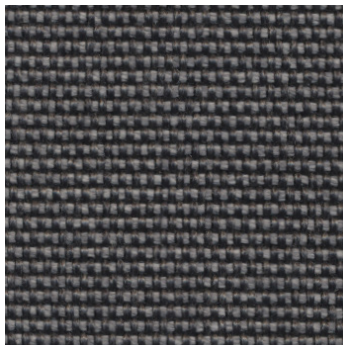
51



75



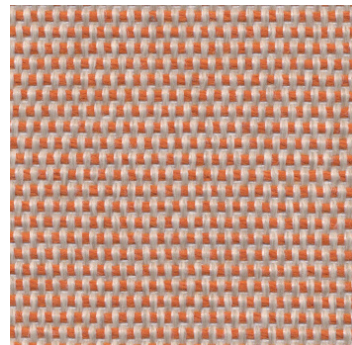
54



83



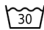



53



29

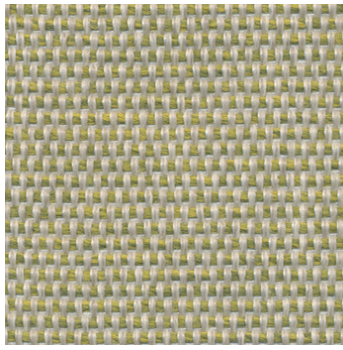
Strada

TECHNICAL PROPERTIES

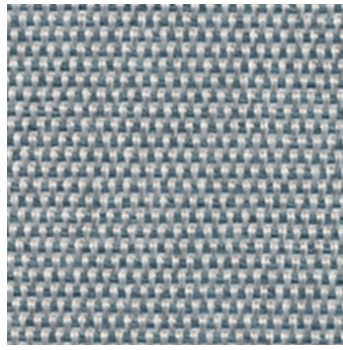
PROPERTIES	VALUE
Composition	74%PP 26% PES
Weight	700 g/ml
Martindale	40,000
Fabric care instruction	     

Category

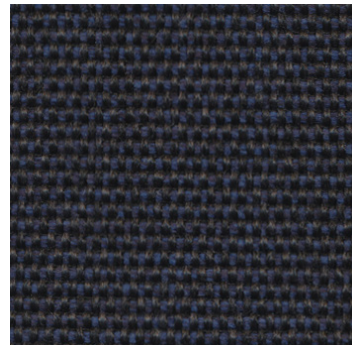
01



32



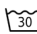
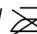




43



47

Strada

TECHNICAL PROPERTIES

PROPERTIES	VALUE
Composition	74%PP 26% PES
Weight	700 g/ml
Martindale	40,000
Fabric care instruction	     

Category

01

Category

02



07



50



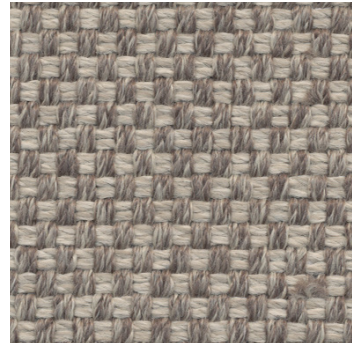
99



08



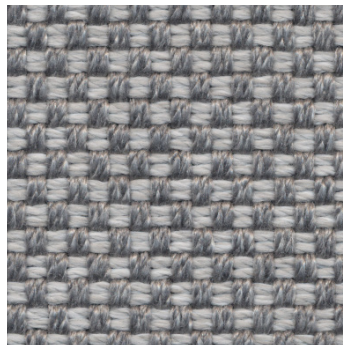
05



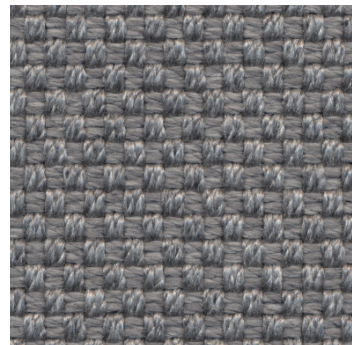
11



54




51



59

Bora Bora

TECHNICAL PROPERTIES

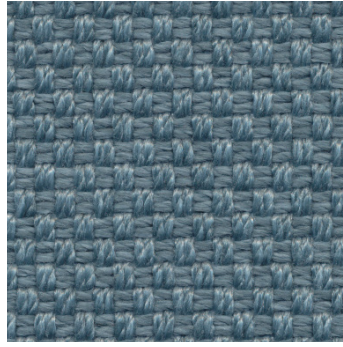
PROPERTIES	VALUE
Composition	82%PP 18% PES
Weight	1050 g/ml
Martindale	>100,000
Fabric care instruction	     

Category

02



53



42



47

Bora Bora

TECHNICAL PROPERTIES

PROPERTIES	VALUE
Composition	82%PP 18% PES
Weight	1050 g/ml
Martindale	>100,000
Fabric care instruction	     

Category

02

**BEN
SEN**

[bensen.com](https://www.bensen.com)