



**BEN
SEN**

Fabrics & Leathers
2019

BENSEN Fabrics & Leathers

Category	Cut Lengths (Stocked in Europe)
A	P 3 House Leather P 4 Prescott (Leather) P 5 Toscano (Leather, Tokyo Chair only)
B	P 7 Acquario (Leather)(Except U Turn) P 8 - 11 elmosoft VIII (Leather) P 12 - 13 elmonordic IV (Leather) P 14 Lord (Leather) P 15 Sahara (Leather) P 16 Barbat P 17 Chanel P 18 Optim
C	P 20 Acker P 21 Danzica 01 P 22 - 23 Donnafugata Soft P 24 - 26 Gaja Classic (Gabriel) P 27 Sobral P 28 Tundra 01 P 29 - 30 Wilde P 31 - 32 Wilde 01
D	P 34 Auro P 35 - 37 Europost 2 (Gabriel) P 38 - 39 Katmandu P 40 - 41 Luna 2 (Gabriel) P 42 - 43 Maple (Kvadrat) P 44 - 45 Nobilis P 46 - 47 Pine (Kvadrat)
E	P 49 - 51 Divina 3 (Kvadrat) P 52 - 53 Divina MD (Kvadrat) P 54 - 55 Divina Melange 3 (Kvadrat) P 56 - 57 Harald 3 (Kvadrat) P 58 Masaya P 59 - 60 Savana (Kvadrat)
F	P 62 - 65 Gabriel: Comfort+ Kvadrat Special (Price upon request)

Category

A



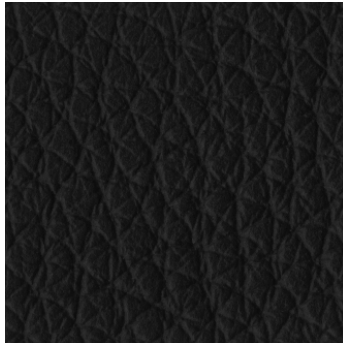
7763



7738



7060



7150

House Leather

Category



TECHNICAL PROPERTIES

PROPERTIES	VALUE
Thickness	1.4 - 1.6 mm
Leather type	Pigmented - corrected grain through dyed aniline
Raw Material	Chrome tanned raw hides with European origin



Turtledove 209



Gray Shadow 211



Peatmoss 217



Black Ink 207

Prescott

(Leather)

TECHNICAL PROPERTIES

PROPERTIES	VALUE
Thickness	1.2 - 1.4 mm
Leather type	Through dyed - finishing with resins and pigments
Raw Material	Natural corrected grain bovine leather

Category





Natural



Honey



Brown



Black

Toscano

(Leather, Tokyo Chair only)

Category



Category

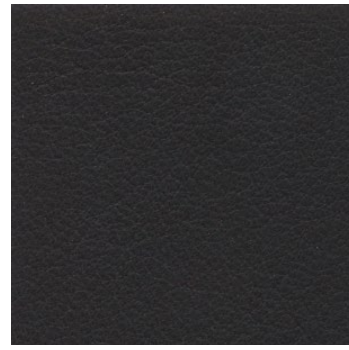
B



Polvere



Fango



Antracite



Collant



Cuio



Marrone



T. moro

Acquario (Leather)

Category



TECHNICAL PROPERTIES

PROPERTIES	VALUE
Thickness	1.0 - 1.2 mm
Leather Types	Aniline - full grain - through dyeing aniline
Raw Material	European raw hides



elmosoft VIII

(Leather)

TECHNICAL PROPERTIES

Category



PROPERTIES	VALUE
Thickness	1.1 - 1.3 mm
Leather Types	Semi-Aniline leather
Raw Material	Grain leather from Scandinavian cattle



elmosoft VIII

(Leather)

TECHNICAL PROPERTIES

Category



PROPERTIES	VALUE
Thickness	1.1 - 1.3 mm
Leather Types	Semi-Aniline leather
Raw Material	Grain leather from Scandinavian cattle



elmosoft VIII

(Leather)

TECHNICAL PROPERTIES

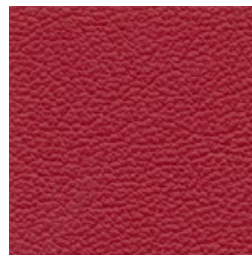
Category



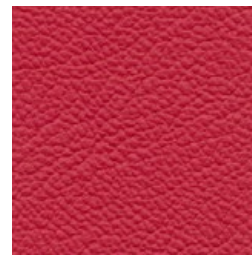
PROPERTIES	VALUE
Thickness	1.1 - 1.3 mm
Leather Types	Semi-Aniline leather
Raw Material	Grain leather from Scandinavian cattle



35126



55002



05007



05011



45018



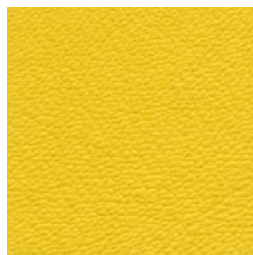
45065



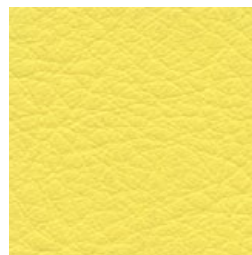
45050



44012



44026



44005

elmosoft VIII

(Leather)

TECHNICAL PROPERTIES

PROPERTIES	VALUE
Thickness	1.1 - 1.3 mm
Leather Types	Semi-Aniline leather
Raw Material	Grain leather from Scandinavian cattle

Category





elmonordic IV

(Leather)

TECHNICAL PROPERTIES

Category



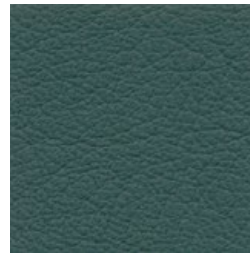
PROPERTIES	VALUE
Thickness	1.3 - 1.5 mm
Leather Types	Semi-Aniline leather
Raw Material	Grain leather from Scandinavian cattle



87007



98027



88035



18014



01038



43044



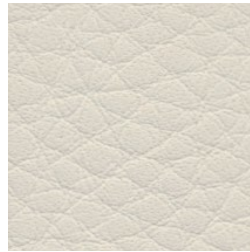
44013



02071



02064



00385

elmonordic IV (Leather)

TECHNICAL PROPERTIES

PROPERTIES	VALUE
Thickness	1.3 - 1.5 mm
Leather Types	Semi-Aniline leather
Raw Material	Grain leather from Scandinavian cattle

Category





9000



9320



9010



9340



9230



9250



9120



9270



9280



9180



9190



9300

Lord

(Leather)

Category

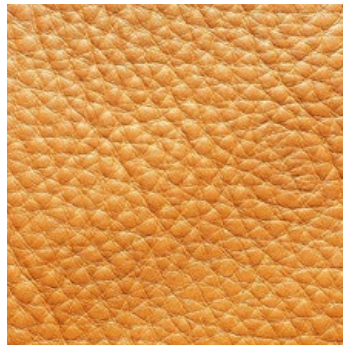


TECHNICAL PROPERTIES

PROPERTIES	VALUE
Thickness	1.3 - 1.5 mm
Leather Types	Aniline - full grain - through dyeing aniline
Raw Material	European raw hides



Gray



Tan



Brown



Black

Sahara

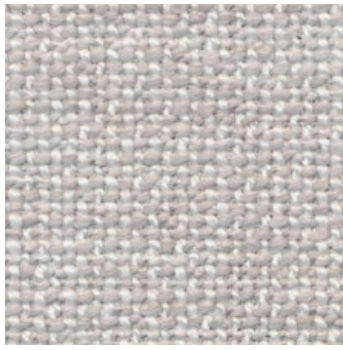
(Leather)

Category

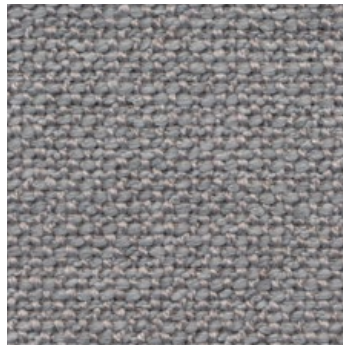


TECHNICAL PROPERTIES

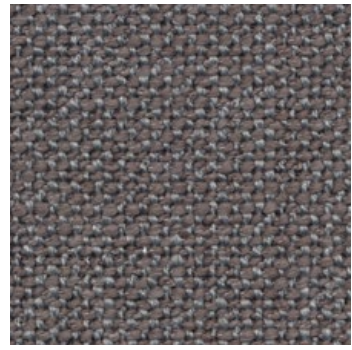
PROPERTIES	VALUE
Thickness	1.4~1.6 mm
Leather Types	Semi-Aniline leather



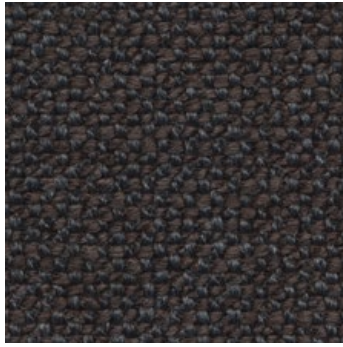
18



16



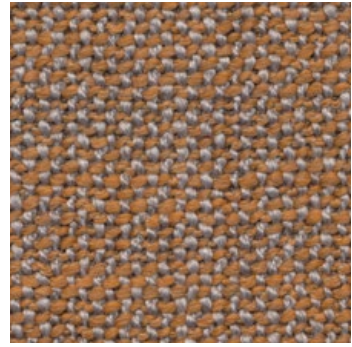
14



12



24



2








4



7

Barbat

TECHNICAL PROPERTIES

PROPERTIES	VALUE
Composition	41% Acrylic 38% Polyester 21% Cotton
Weight	762 g/ml
Martindale	40,000
Fabric care instruction	    

Category

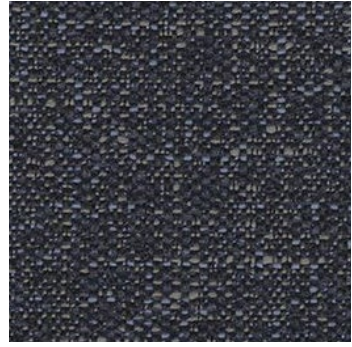




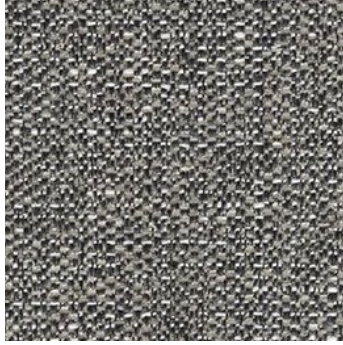
07



10



45



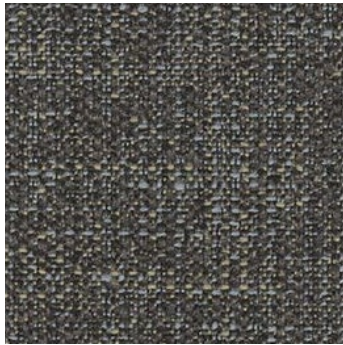
51



52







53



70

Chanel

TECHNICAL PROPERTIES

PROPERTIES	VALUE
Composition	48% Polyester 32% Polypropylene 20% Cotton
Weight	695 g/ml
Martindale	26,000
Fabric care instruction	   

Category





05



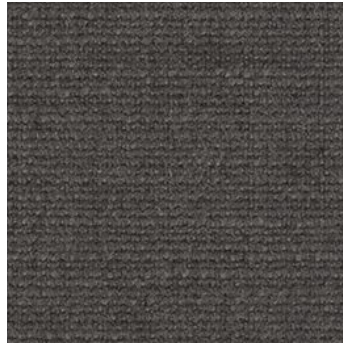
07



54



52








53



48

Optim

TECHNICAL PROPERTIES

PROPERTIES	VALUE
Composition	56% Polyester 36%Linen 8% Cotton
Weight	800 g/ml
Martindale	25,000
Fabric care instruction	    

Category



Category

C



1/2



1/6



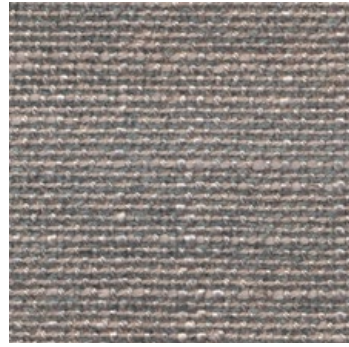
5/3



6/1



6/2



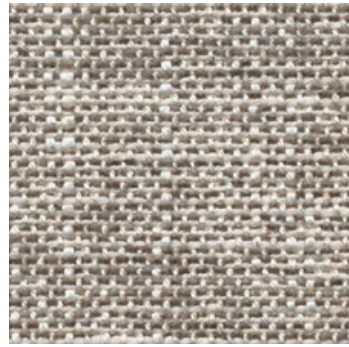
5/4



1/5



1/3



1/24

Acker

TECHNICAL PROPERTIES

PROPERTIES	VALUE
Composition	59% Viscose 8% Linen 33% Cotton
Weight	975 g/ml
Martindale	35,000
Fabric care instruction	

Category





30



10



13



14



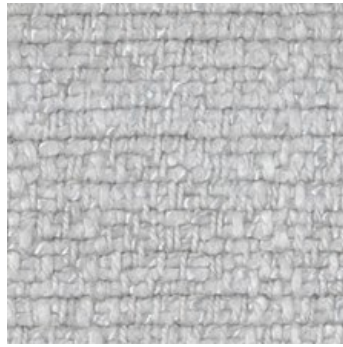
16



17



19



20



26

Danzica 01

TECHNICAL PROPERTIES

PROPERTIES	VALUE
Composition	48% Cotton 48% Viscose 4% Linen
Weight	1120 g/ml
Martindale	30,000
Fabric care instruction	

Category





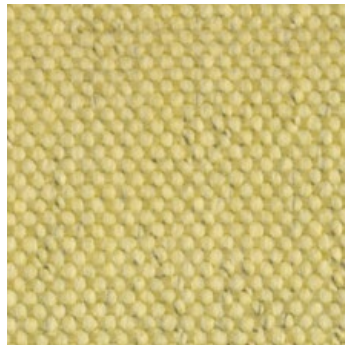
01



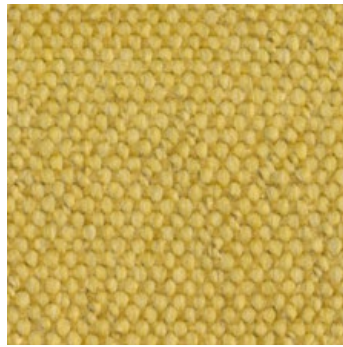
166



444



20



21



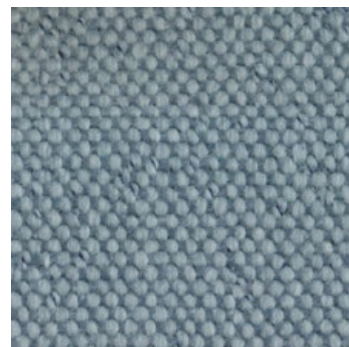
15



445



443



11

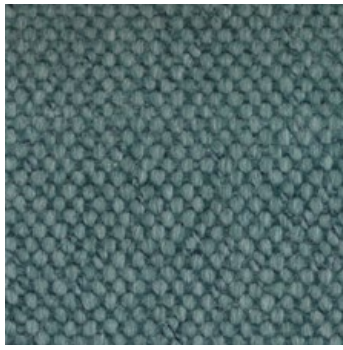
Donnafugata Soft

TECHNICAL PROPERTIES

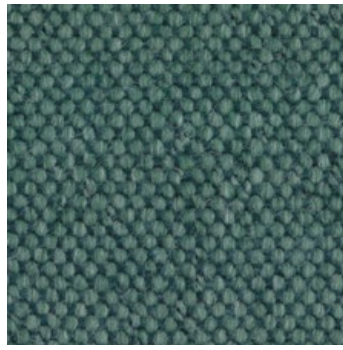
PROPERTIES	VALUE
Composition	40% Viscose 35% Acrylic 15% Cotton 10% Polyester
Weight	950 g/ml
Martindale	50,000
Fabric care instruction	

Category





12



22



16



168



13



17



18



14



19

Donnafugata Soft

TECHNICAL PROPERTIES

PROPERTIES	VALUE
Composition	40% Viscose 35% Acrylic 15% Cotton 10% Polyester
Weight	950 g/ml
Martindale	50,000
Fabric care instruction	

Category





Gaja Classic

TECHNICAL PROPERTIES

PROPERTIES	VALUE
Composition	100% Wo
Weight	530 g/ml
Martindale	50,000

Fabric care instruction



Category





Gaja Classic

TECHNICAL PROPERTIES

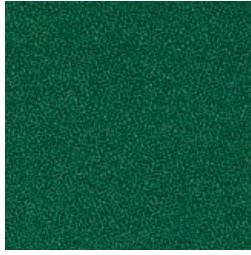
PROPERTIES	VALUE
Composition	100% Wool
Weight	530 g/ml
Martindale	50,000

Fabric care instruction



Category





68048

Gaja Classic

TECHNICAL PROPERTIES

PROPERTIES	VALUE
Composition	100% Wool
Weight	530 g/ml
Martindale	50,000
Fabric care instruction	

Category





13



01



04



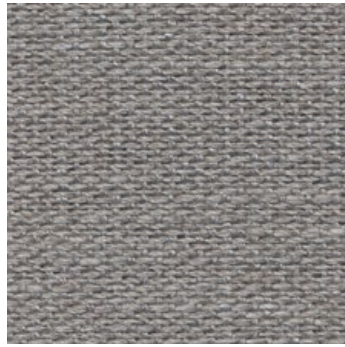
05



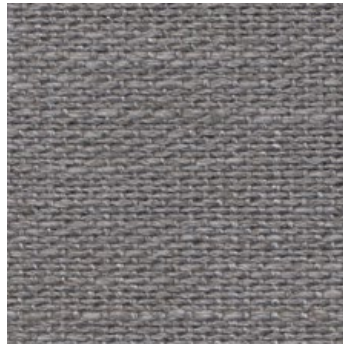
11



02



12



06



09

Sobral

TECHNICAL PROPERTIES

PROPERTIES	VALUE
Composition	21% Cotton 53% Viscose 24% Linen 2% Polyamide
Weight	957 g/ml
Martindale	50,000
Fabric care instruction	

Category





07



03



04



05



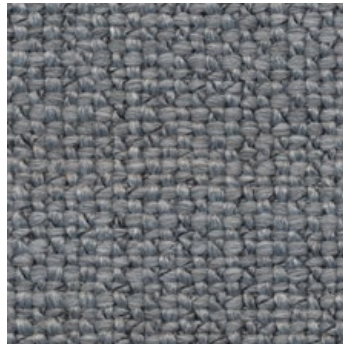
06



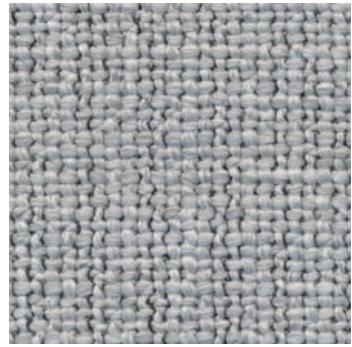
12



11



10



08

Tundra 01

TECHNICAL PROPERTIES

PROPERTIES	VALUE
Composition	38% Cotton 42% Viscose 14% Polyacryl 6% Polyester
Weight	1022 g/ml
Martindale	30,000
Fabric care instruction	

Category





01



1/31



1/1



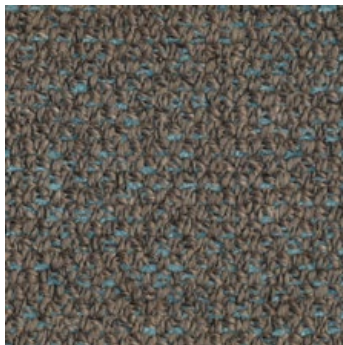
21



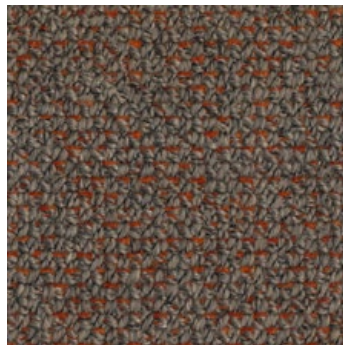
22/19



24/5



23/1



23/15



31

Wilde

TECHNICAL PROPERTIES

PROPERTIES	VALUE
Composition	36% Cotton 26% Acrylic 16% Viscose 10% Polyamid 7% Wool 5% Linen
Weight	941 g/ml
Martindale	30,000
Fabric care instruction	

Category





24



23/100

Wilde

TECHNICAL PROPERTIES

PROPERTIES	VALUE
Composition	36% Cotton 26% Acrylic 16% Viscose 10% Polyamid 7% Wool 5% Linen
Weight	941 g/ml
Martindale	30,000
Fabric care instruction	

Category





01



1/31



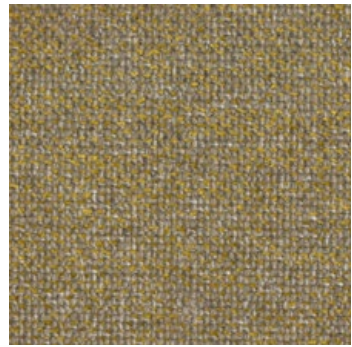
1/1



21



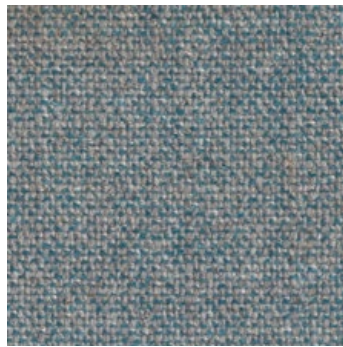
22



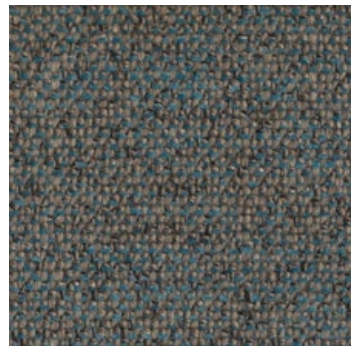
22/18



22/19



24/5



23/1

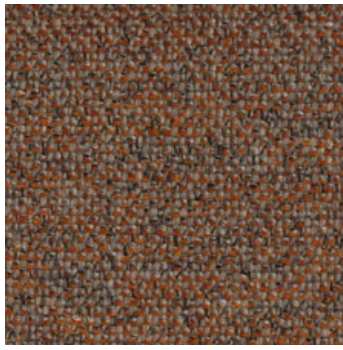
Wilde 01

TECHNICAL PROPERTIES

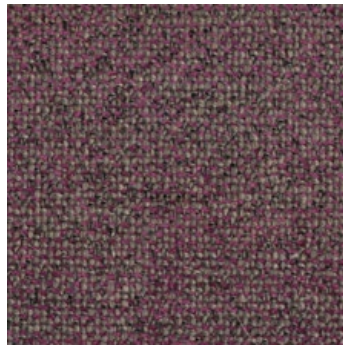
PROPERTIES	VALUE
Composition	36% Cotton 26% Acrylic 16% Viscose 10% Polyamid 7% Wool 5% Linen
Weight	915 g/ml
Martindale	35,000
Fabric care instruction	

Category

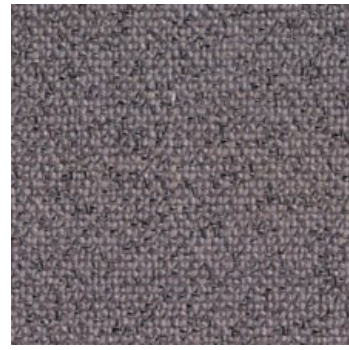




23/15



23/16



31



24/1



24



23/100

Wilde 01

TECHNICAL PROPERTIES

PROPERTIES	VALUE
Composition	36% Cotton 26% Acrylic 16% Viscose 10% Polyamid 7% Wool 5% Linen
Weight	915 g/ml
Martindale	35,000
Fabric care instruction	

Category



Category

D



041



030



091



010



000



100



080



110



070

Auro

TECHNICAL PROPERTIES

PROPERTIES	VALUE
Composition	52% Cotton 40% Wool 8% Nylon
Weight	530 g/ml
Martindale	36,000
Fabric care instruction	

Category





Europost 2

TECHNICAL PROPERTIES

PROPERTIES	VALUE
Composition	100% Wool
Weight	800 g/ml
Martindale	50,000
Fabric care instruction	

Category





Europost 2

TECHNICAL PROPERTIES

PROPERTIES	VALUE
Composition	100% Wool
Weight	800 g/ml
Martindale	50,000

Category

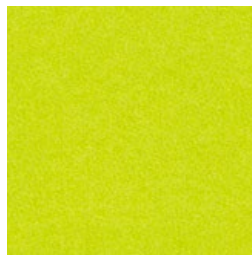


Fabric care instruction

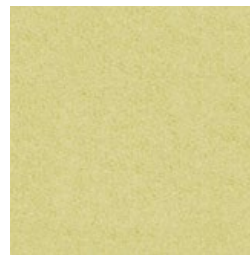




68030



68126



68127



68128



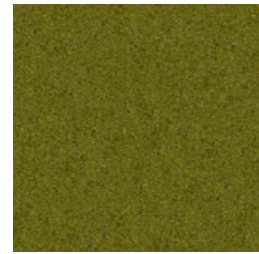
62061



62060



68072



68003

Europost 2

TECHNICAL PROPERTIES

PROPERTIES	VALUE
Composition	100% Wool
Weight	800 g/ml
Martindale	50,000
Fabric care instruction	    

Category

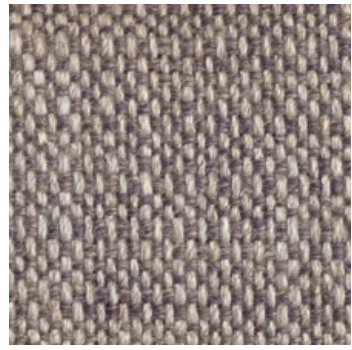




01



1/1



1/3



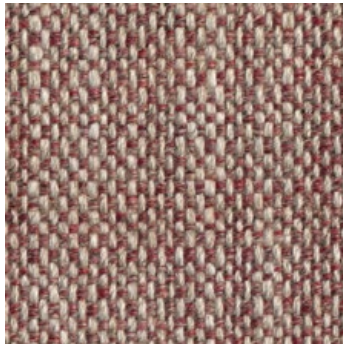
1/6



1/7



1/8



1/11



1/12



1/13

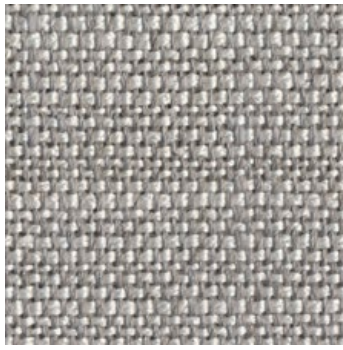
Katmandu

TECHNICAL PROPERTIES

PROPERTIES	VALUE
Composition	36% Viscose 32% Linen 24% Acrylic 4% Polyamid 4% Polyester
Weight	1051 g/ml
Martindale	25,000
Fabric care instruction	

Category





3/2



1/15



3/3

Katmandu

TECHNICAL PROPERTIES

PROPERTIES	VALUE
Composition	36% Viscose 32% Linen 24% Acrylic 4% Polyamid 4% Polyester
Weight	1051 g/ml
Martindale	25,000
Fabric care instruction	

Category





Luna 2

TECHNICAL PROPERTIES

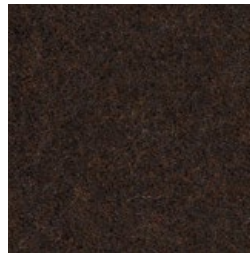
PROPERTIES	VALUE
Composition	90% Wool 10% Polyamide
Weight	680 g/ml
Martindale	70,000



Fabric care instruction



4111



4104



4204








4101



4102

Luna 2

TECHNICAL PROPERTIES

PROPERTIES	VALUE
Composition	90% Wool 10% Polyamide
Weight	680 g/ml
Martindale	70,000
Fabric care instruction	    

Category





Maple

TECHNICAL PROPERTIES

PROPERTIES	VALUE
Composition	81% Viscose 15% Linen 4% Polyester
Weight	850 g/ml
Martindale	30,000

Fabric care instruction



Category





0732



0742



0762



0792



0832



0862

Maple

TECHNICAL PROPERTIES

PROPERTIES	VALUE
Composition	81% Viscose 15% Linen 4% Polyester
Weight	850 g/ml
Martindale	30,000
Fabric care instruction	

Category





02



03



04



05



06



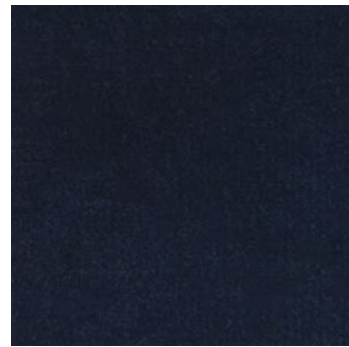
07



10



11



14

Nobilis

(Velvet)

TECHNICAL PROPERTIES

PROPERTIES	VALUE
Composition	100% Cotton
Weight	620 g/ml
Martindale	>65,000
Fabric care instruction	

Category





21



22




25

Nobilis

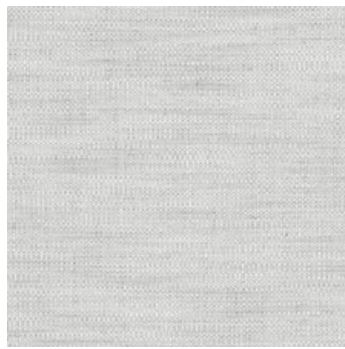
(Velvet)

TECHNICAL PROPERTIES

PROPERTIES	VALUE
Composition	100% Cotton
Weight	620 g/ml
Martindale	>65,000
Fabric care instruction	

Category

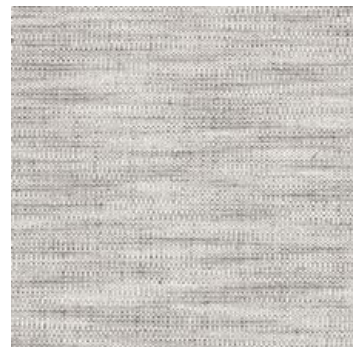




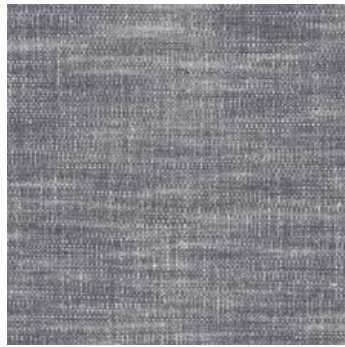
0111



0121



0131



0171



0211



0411



0421



0451



0611

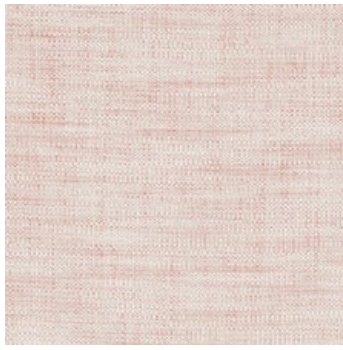
Pine

TECHNICAL PROPERTIES

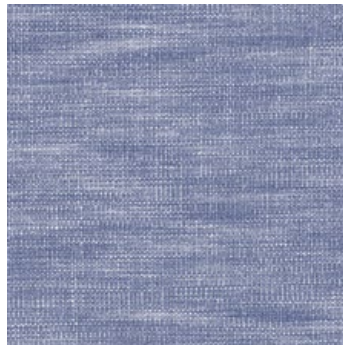
PROPERTIES	VALUE
Composition	80% Viscose 20% Linen
Weight	800 g/ml
Martindale	20,000
Fabric care instruction	

Category

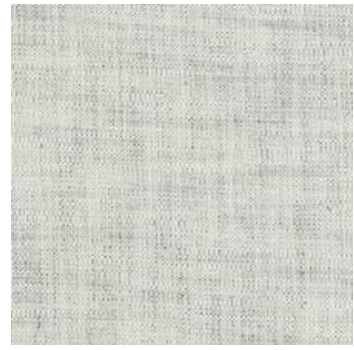




0621



0771








0931



0981

Pine

TECHNICAL PROPERTIES

PROPERTIES	VALUE
Composition	80% Viscose 20% Linen
Weight	800 g/ml
Martindale	20,000
Fabric care instruction	    

Category



Category

E



Divina 3

TECHNICAL PROPERTIES

PROPERTIES	VALUE
Composition	100% New wool
Weight	840 g/ml
Martindale	45,000
Fabric care instruction	

Category





Divina 3

TECHNICAL PROPERTIES

PROPERTIES	VALUE
Composition	100% New wool
Weight	840 g/ml
Martindale	45,000

Fabric care instruction



Category





Divina 3

TECHNICAL PROPERTIES

PROPERTIES	VALUE
Composition	100% New wool
Weight	840 g/ml
Martindale	45,000
Fabric care instruction	

Category





Divina MD

TECHNICAL PROPERTIES

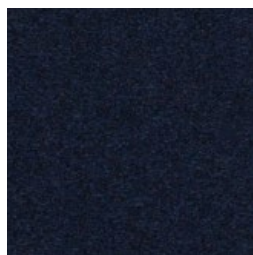
PROPERTIES	VALUE
Composition	100% New wool
Weight	840 g/ml
Martindale	45,000

Category



Fabric care instruction





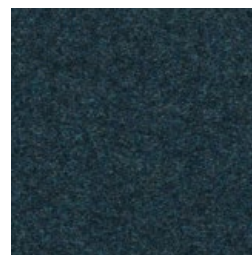
0783



0813



0843



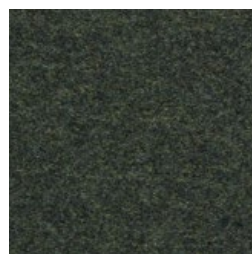
0873



0913



0943



0973

Divina MD

TECHNICAL PROPERTIES

PROPERTIES	VALUE
Composition	100% New wool
Weight	840 g/ml
Martindale	45,000
Fabric care instruction	    

Category





Divina Melange 3

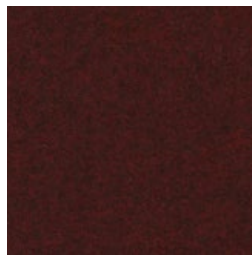
TECHNICAL PROPERTIES

PROPERTIES	VALUE
Composition	100% New wool
Weight	840 g/ml
Martindale	45,000





0581



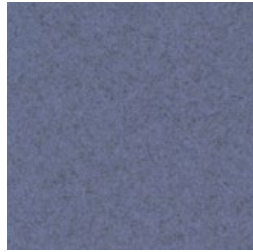
0597



0617



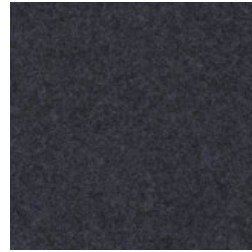
0620



0647



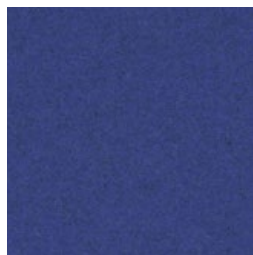
0677



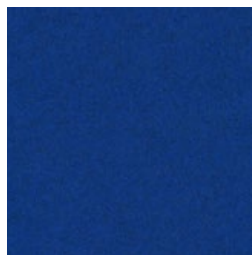
0687



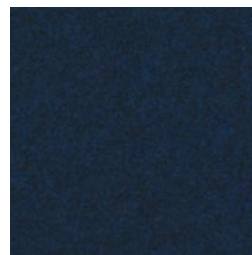
0731



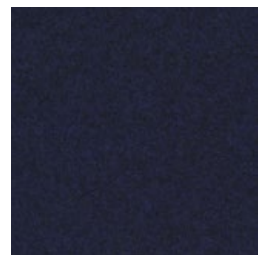
0747



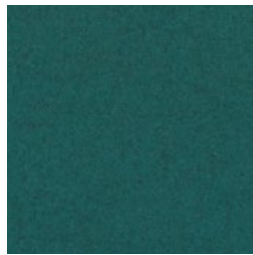
0757



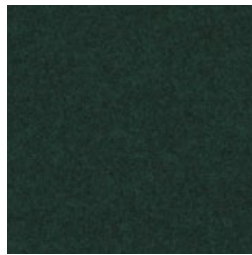
0777



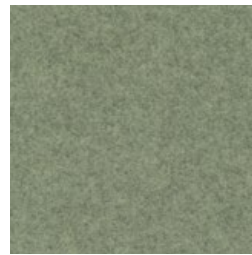
0787



0821



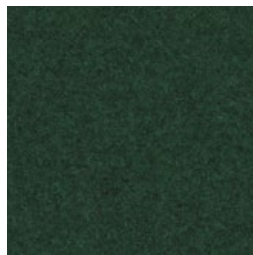
0871



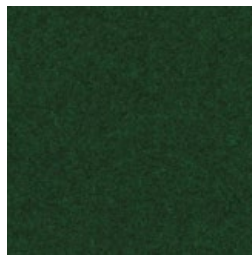
0917



0937



0967



0977

Divina Melange 3

TECHNICAL PROPERTIES

PROPERTIES	VALUE
Composition	100% New wool
Weight	840 g/ml
Martindale	45,000

Fabric care instruction



Category





Harald 3

(Velvet)

TECHNICAL PROPERTIES

PROPERTIES	VALUE
Composition	100% Cotton
Weight	520 g/ml
Martindale	100,000

Fabric care instruction



Category

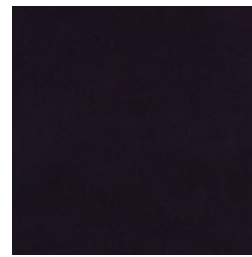




0632



0652



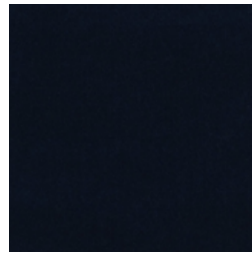
0692



0722



0772



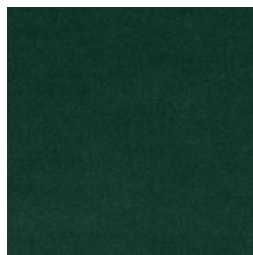
0792



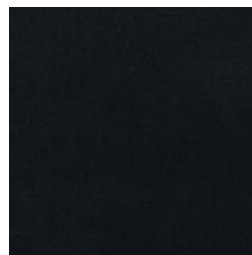
0823



0942



0952



0982

Harald 3

(Velvet)

TECHNICAL PROPERTIES

PROPERTIES	VALUE
Composition	100% Cotton
Weight	520 g/ml
Martindale	100,000
Fabric care instruction	

Category





TA155



TM444



TN166



TN168



TM443



TM445



TN167

Masaya

TECHNICAL PROPERTIES

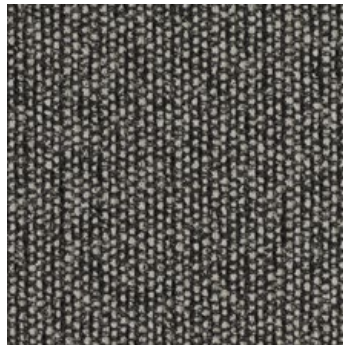
PROPERTIES	VALUE
Composition	90% Linen 10% Polyamide
Weight	1132 g/ml
Martindale	25,000
Fabric care instruction	

Category





0122



0152



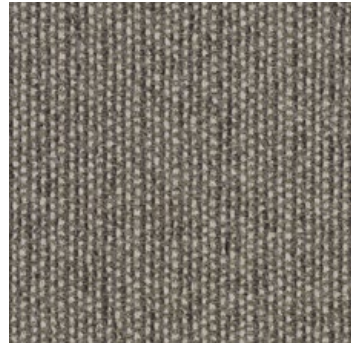
0192



0202



0222



0242



0262



0292



0442

Savana

TECHNICAL PROPERTIES

PROPERTIES	VALUE
Composition	34% Polyester 31% New wool 26% Acrylic 4% Cotton 3% Nylon 2% Linen
Weight	680 g/ml
Martindale	45,000
Fabric care instruction	

Category

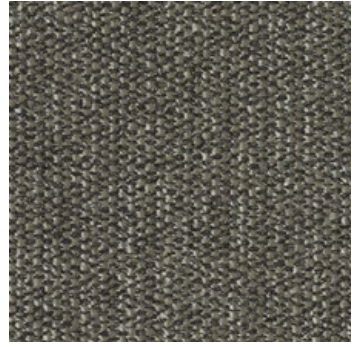




0622



0672



0952

Savana

TECHNICAL PROPERTIES

PROPERTIES	VALUE
Composition	34% Polyester 31% New wool 26% Acrylic 4% Cotton 3% Nylon 2% Linen
Weight	680 g/ml
Martindale	45,000
Fabric care instruction	

Category



Category

F



Comfort+

TECHNICAL PROPERTIES

PROPERTIES	VALUE
Composition	88% Polyester 12% Polyurethane
Weight	385 g/ml
Martindale	>100,000
Fabric care instruction	





Comfort+

TECHNICAL PROPERTIES

PROPERTIES	VALUE
Composition	88% Polyester 12% Polyurethane
Weight	385 g/ml
Martindale	>100,000
Fabric care instruction	

Category





Comfort+

TECHNICAL PROPERTIES

PROPERTIES	VALUE
Composition	88% Polyester 12% Polyurethane
Weight	385 g/ml
Martindale	>100,000

Fabric care instruction



Category





Comfort+

TECHNICAL PROPERTIES

PROPERTIES	VALUE
Composition	88% Polyester 12% Polyurethane
Weight	385 g/ml
Martindale	>100,000
Fabric care instruction	



**BEN
SEN**

bensen.com