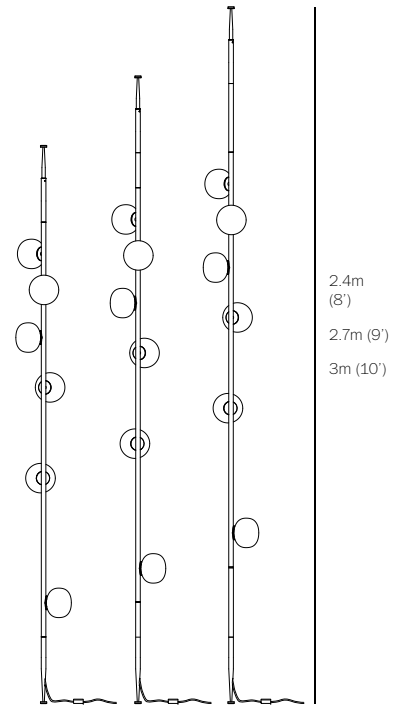


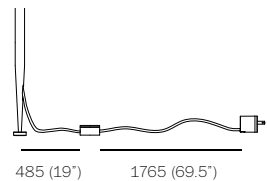
STEM - COLUMN

84.6

PRODUCT SPECIFICATION



2.4m  
(8')  
2.7m (9')  
3m (10')



485 (19') 1765 (69.5')



110-120  
(4.3-4.7')

110-120  
(4.3-4.7')

approx 15kg (33.3lb)  
approx 15.5kg (34.2lb)  
approx 16kg (35lb)

PENDANTS: six  
LAMPING: 1.5w LED  
POLE LENGTH 2.4m (8') / 2.7m (9') / 3m (10')  
MATERIALS: blown glass, black flexible cord, brass dial control, unlacquered brass or matte black stem  
ADDITIONAL EXTENDERS 153mm (6") / 305mm (12")  
WEIGHT: approximately 15kg (33.3lb) / 15.5kg (34.2lb) / 16kg (35lb)  
CABLE LENGTH 2290mm (90") flexible cable  
POWER SUPPLIES: integral

DESCRIPTION

The stem column system comes in unlacquered brass or matte black stem. It comes with a 2290mm (90") long flexible cable with dial control for on/off/dimming. There is notch on the back of the dial control for wall mounting.

A white glass bubble is captured inside a fine copper mesh basket and then plunged into hot clear glass. Air is blown into the matrix to gently push the white glass through the mesh, creating a delicate pillowed form that is suspended inside the thick outer layer of clear glass. Sometimes the copper mesh basket folds and crinkles, adding specificity to each piece.

NOTES

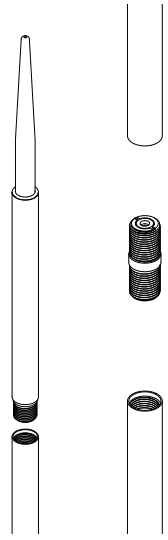
- + Purchase replacement lamps online at [www.bocci.com/shop/bulbs](http://www.bocci.com/shop/bulbs)
- + Details on minimum/maximum height, please see column configurations diagram on the last page of this document.
- + **The brass used in our Stem Series is untreated and, as such, will develop a natural patina over time. To avoid any marking or tarnish on the brass during handling and installation, please use the gloves provided in your shipment.**

US Patent Pending  
EU Patent # 003611144-0001 to 0004

Made in Vancouver, Canada

Vancouver  
[sales@bocci.com](mailto:sales@bocci.com)  
[www.bocci.com](http://www.bocci.com)

Berlin  
[europe@bocci.com](mailto:europe@bocci.com)  
[www.bocci.com](http://www.bocci.com)



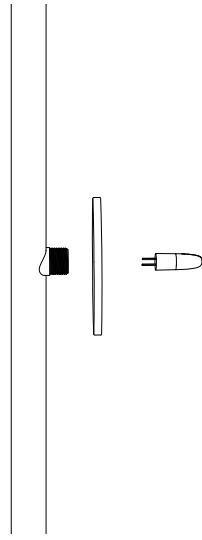
1

Thread the stem spikes onto the assembled stem on both ends.

Connect the rest of the pieces with the stem connector.

Note: This step is only necessary for 2.7m (9') and 3m (10') stem options.

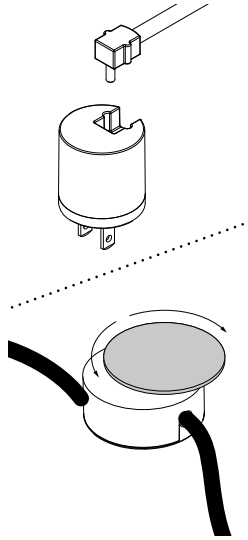
Note: Bocci recommends wearing thin gloves during installation to protect the stem finish and the glass surface.



2

Thread the pendant mounting plate onto the stem.

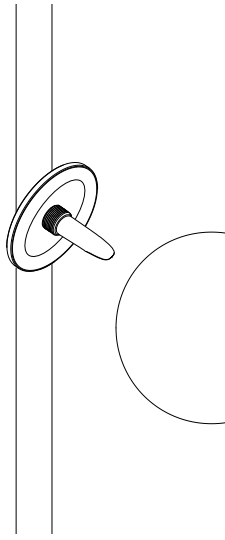
Carefully insert provided lamp into socket.



3

Plug in the cord to the plug head.

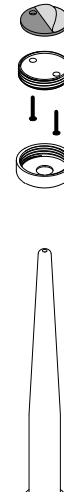
Plug in light. Turn the dial to check power to lamp is working correctly.



4

Gently thread pendant onto the stem. Be sure to carefully place the pendant so as not to damage the lamp during installation.

Clean fingerprints.



5

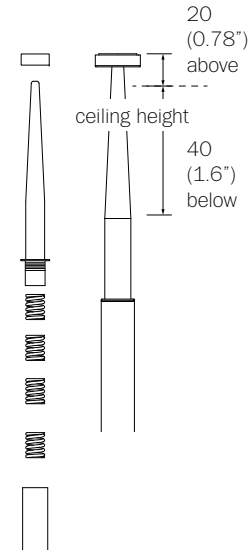
There are 2 x stem holders. Install one to the ceiling and one to the floor.

You must secure the ceiling stem holder with provided screws.

i. Peel off the adhesive silicone pad and attach to the holder base.

ii. Position the stem holder to the ceiling and secure with screws.

Repeat steps for the floor stem holder. Bocci recommends securing the floor stem holder to the floor for additional support.



6

The end opposite to the cord has a spring loaded spike.

Unthread the spike to add or remove springs to adjust tension or range to the fixture.



7

Push this end into the stem holder. The spike must rest inside the indentation.

Position the opposite end to the stem holder that is located on the floor.

Clean fingerprints from fixture surfaces.

For additional assistance, please contact Bocci:

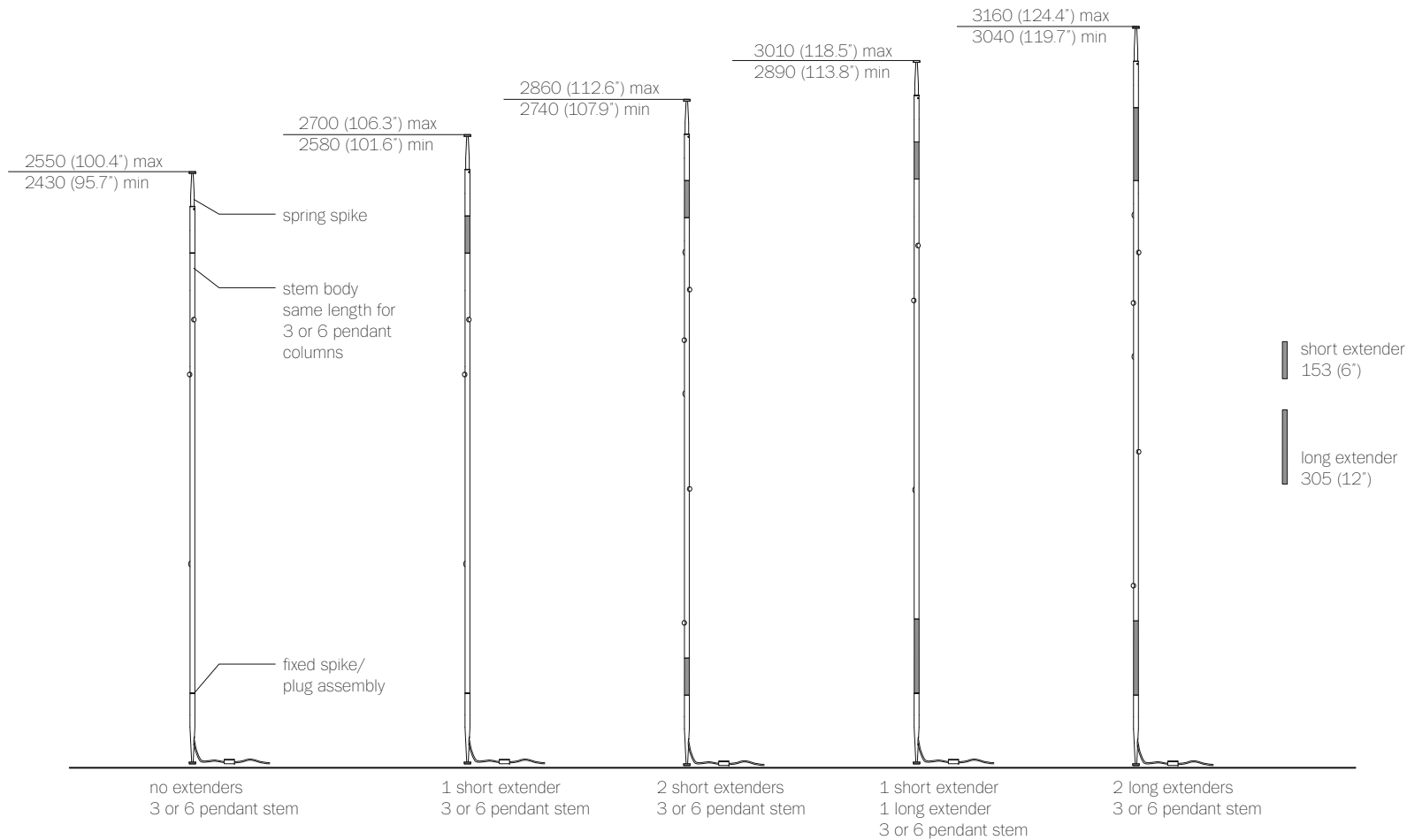
Vancouver  
sales@bocci.com  
www.bocci.com

Berlin  
europe@bocci.com  
www.bocci.com

US Patent Pending  
EU Patent # 003611144-0001 to 0004

Made in Vancouver, Canada

This diagram is meant to illustrate the extender combinations for the columnar stem fixtures.



For additional assistance, please contact Bocci:

Vancouver  
sales@bocci.com  
www.bocci.com

Berlin  
europe@bocci.com  
www.bocci.com

Made in Vancouver, Canada  
EU Patent # 003611144-0001 to 0004

Made in Vancouver, Canada

STEM

84.6

COLUMN CONFIGURATIONS  
PRODUCT INSTALLATION INSTRUCTIONS

© 2021, Bocci Design and Manufacturing Inc. All rights reserved. Any inquiries should be directed to: info@bocci.com

**BOCCI**