

# 16

tree

Formed by sequentially pouring three separate puddles of molten glass of varying opacity and colour over a horizontal plane. Each layer responds to the indeterminate shape of the previous pour to create a layered whole. Two of these pieces are then attached to house an internal light source.



# 16

tree

## Lamping

1.5w LED

## Material

poured glass, electrical components, bead blasted stainless steel armature components

## Patent

US patent # D754,911  
EU patent #002672774 - 0001 to 0012



±216  
(8.5")

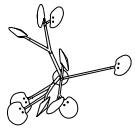
±203  
(8")

# 16

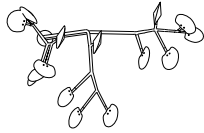
tree

## Tree System

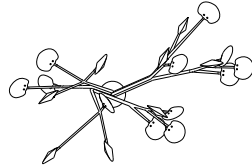
16.10  
Olive



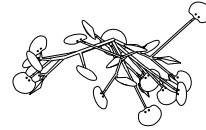
16.15  
Cypress



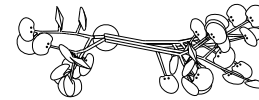
16.20  
Hawthorne



16.25  
Elm



16.35  
Aspen

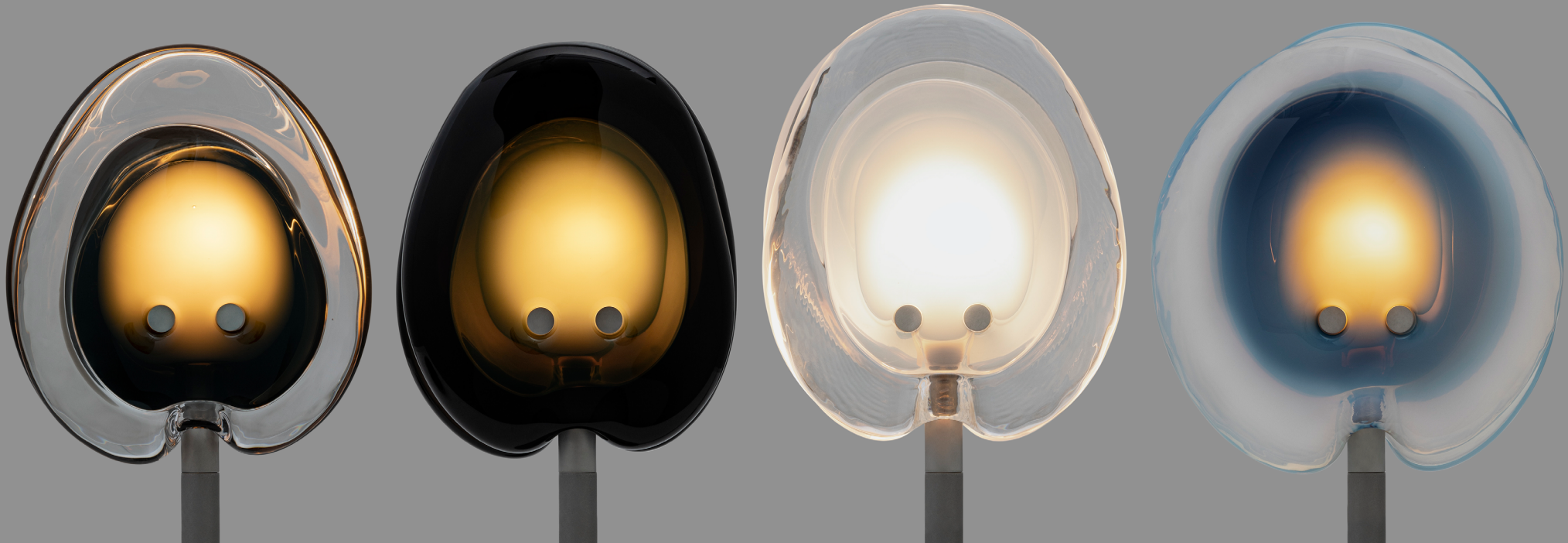


16.40  
Birch



# 16

tree



Grey 1

Grey 2

White 1

White 2

# 16

tree



16  
tree



16  
tree



Designed by Omer Arbel, 2015  
[www.bocci.ca](http://www.bocci.ca)



**BOCCI**

© 2019, Bocci Design and Manufacturing Inc.  
Any inquiries should be directed to: [info@bocci.ca](mailto:info@bocci.ca)

16  
tree



Designed by Omer Arbel, 2015  
[www.bocci.ca](http://www.bocci.ca)

**BOCCI**

© 2019, Bocci Design and Manufacturing Inc.  
Any inquiries should be directed to: [info@bocci.ca](mailto:info@bocci.ca)