



ELEVATING ART AND ARTISAN.

MULXIPLY.COM



---

# MULXIPLY

COLLABORATIVE

SPRING / SUMMER 2024



PRONOUNCED  
multiply

Our collection is designed and curated by Tanja Cesh in Portland, Maine and created in collaboration with artists + craftsmen and women in Kathmandu, Nepal.

Together we are creating sustainable change by securing the place of heritage crafts in a quickly modernizing society — ensuring that artisan communities continue to thrive.





ABOVE:  
#MOE-ST Mini Origin Earrings - Sterling Silver

AT RIGHT:  
#MOE-B Mini Origin Earrings - Brass  
#NMCR-B Moon Adjustable Cuff Ring - Brass



# starry nights

Nature is the source of inspiration—  
an abstract take on the starry nights in the moody Himalayas.



THE IDEA OF SURROUNDING OR ENCLOSING  
WITH CARE OR COMPLETENESS.



enfold

#ESR-ST Enfold Ring

Shown in Sterling Silver. Also Available in Brass.



SKIP STONES ON THE DARKENED SKY,  
TO MAKE RIPPLES OF SHOOTING STARS.



AT LEFT + ABOVE:

#SSN-B Skipping Stones Necklace  
#MCNK-B Hammered Moon Coin Necklace  
#A-EBTDST Belted Tank Dress - Pinstripe

Shown in Brass. Also available in Sterling Silver.



**SKIPPING STONES COLLECTION**  
Available in Brass and Sterling Silver

#SSDE-B Skipping Stones Dangle Earrings  
#SSR-B Skipping Stones Ring







# skipping stones

A collection of organic and smooth stone shapes —  
dedicated to lazy summer days.



#SSN-ST Skipping Stones Dangle Earrings  
#A-EBSBG Bubble Sleeve Blouse - Gingham





DOT - DASH.  
HUGGIE CUFF EARRINGS  
MAKE A LITTLE  
STATEMENT WITHOUT  
SAYING A WORD.

THIS PAGE:  
#DSHE-M Dash Huggie Earrings  
#DSHE-BST Dash Huggie Earrings

AT RIGHT:  
#DTHE-BST Dot Huggie Earrings

Available in multiple metal arrangements.

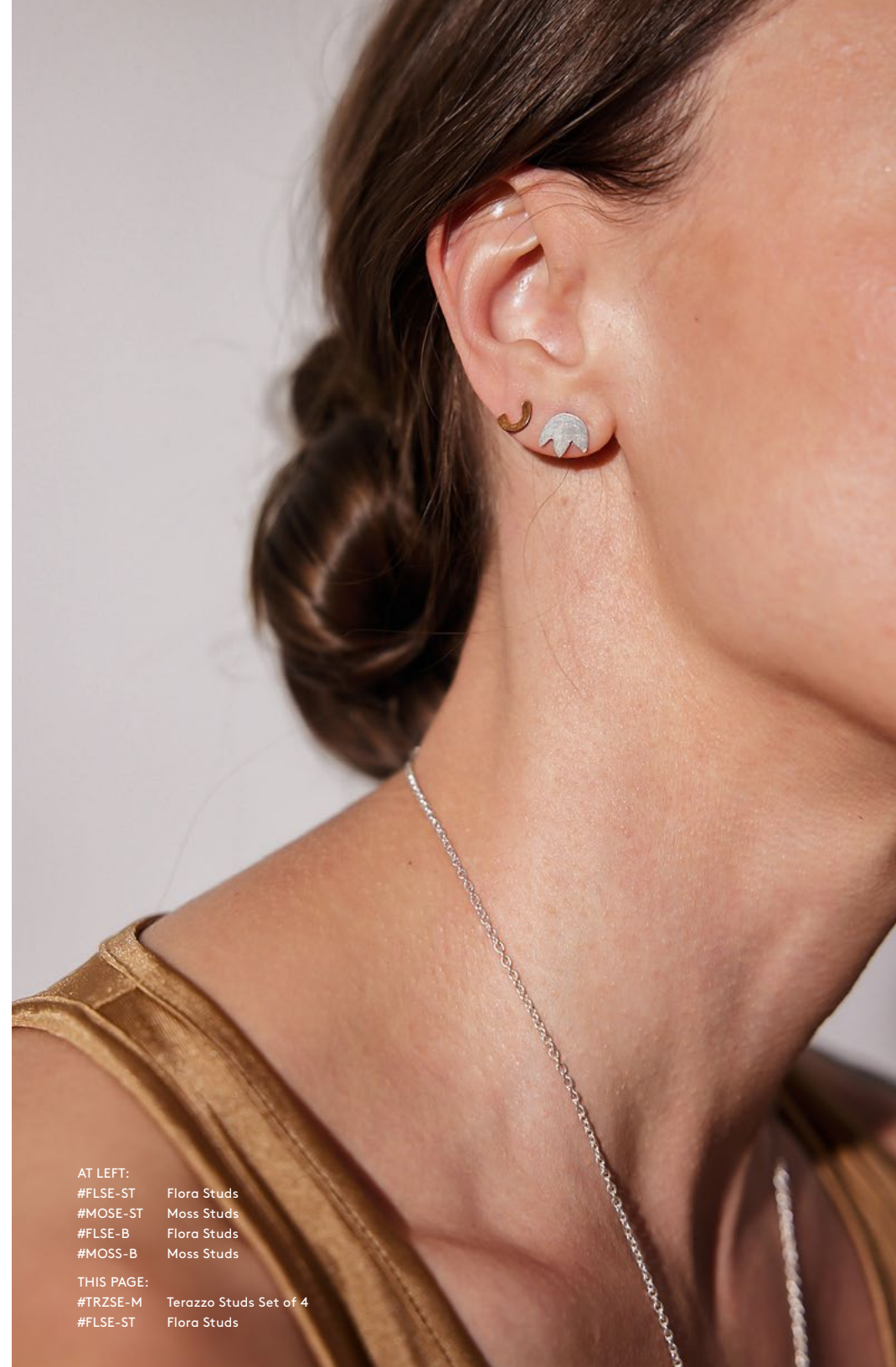






# moss & flora

And when thou art weary I'll find thee a bed,  
of mosses and flowers to pillow thy head.



AT LEFT:  
#FLSE-ST Flora Studs  
#MOSE-ST Moss Studs  
#FLSE-B Flora Studs  
#MOSS-B Moss Studs

THIS PAGE:  
#TRZSE-M Terazzo Studs Set of 4  
#FLSE-ST Flora Studs



CHECK MATE.



#TCDE-M Tiny Duo Checkers Earrings  
#TSSE-M Tiny Shapes Studs Set of 4

Brass and Oxidized Brass





**CANYON COLLECTION**

Available in Brass and Sterling Silver

#CTCN-ST Canyon Tiny Charm Necklace

#SHN-ST Minimal Stick Necklace



# canyon

#CSR-ST Canyon Statement Ring

Shown in Sterling Silver. Also Available in Brass.



AN ODE TO THE CANYON—  
THE DEEP AND WONDROUS WRINKLES OF THE EARTH.



**CANYON TINY STUD EARRINGS**

AT LEFT:  
#CTSE-O Oxidized Brass

ABOVE:  
#CTSE-B/O/ST Brass/Oxidized Brass/Sterling Silver



“NATURE IS PAINTING FOR US,  
DAY AFTER DAY,  
PICTURES OF INFINITE BEAUTY  
IF ONLY WE HAVE  
THE EYES TO SEE THEM.”

- JOHN RUSKIN



AT LEFT:  
#YHSR Yala Statement Ring  
#YHPR Yala Pinky Ring

THIS PAGE:  
#CSR-B Canyon Statement Ring  
#YHPR Yala Pinky Ring



# warp & weft

Every thread contributes to the beauty of the whole.

**WEAVE STATEMENT EARRINGS**  
Available in Brass and Sterling Silver

#WVSE-B Weave Statement Earrings





**BELTED TANK DRESS - PINSTRIPE**

100% Handwoven Cotton in Black and Natural Pinstripe

Pointed high-low hem at side seams



#A-EBTDST Belted Tank Dress - Pinstripe





# swing flow

FLOWY TANK DRESS - NUDE

Hand-woven 100% cotton in heathered nude  
Loose, functional cut with easy swing



#A-EFTDN Flowy Tank Dress - Nude





# statement stripe

- #A-EBSBS Bubble Sleeve Blouse - Pinstripe
- #A-EWPK Wide Leg Pant - Black
- #DTHE-BST Dot Huggie Earrings
- #ORL-B Oval Locket Necklace
- #RBR-B Rain Bangle
- #RPR-B Ripple Ring

Shown in Brass. Also Available in Sterling Silver.





# picnic perfect

## BUBBLE SLEEVE BLOUSE - GINGHAM

Hand-woven 100% cotton in black and natural gingham  
Slight crop and flair with statement-making sleeves



#A-EBSBS Bubble Sleeve Blouse - Gingham  
#SSDE-ST Skipping Stones Dangle Earrings  
#SSR-ST Skipping Stones Ring  
#HCB-ST Hammered Cuff Bangle  
#RCR-ST Ridge Cuff Ring





# ruffled up

**TIERED RUFFLE DRESS - BLACK**

Hand-woven 100% cotton

Midi Length, multi-tier cut with piped seams





**TIERED RUFFLE DRESS - GINGHAM**

Hand-woven 100% cotton in black and natural gingham  
Midi Length, multi-tier cut with piped seams



#A-ETSDG Tiered Ruffle Dress - Gingham  
#DSHE-M Dash Huggie Earrings  
#EML-B Embrace Link Bracelet





#A-EWPST Wide Leg Pant - Pinstripe  
#WVSE-ST Weave Statement Earrings



**WIDE LEG PANT - PINSTRIPE**

Hand-woven 100% cotton in Pinstripe  
Gathered elastic waist with attached long tie belt

#A-EWPST - Pinstripe  
Also available in Black



# well served

## EMBER BRASS UTENSIL COLLECTION

Designed collaboratively with Campfire Pottery  
Forged by artisans in Nepal



- #ECS-B Coffee Scoop
- #EOSS-B Oval Serving Spoon
- #ELSS-B Cocktail Spoon
- #ESSF-B Long Serving Fork
- #ESSS-B Long Serving Spoon
- #EHCK-B Herb + Cheese Knife

Additional pieces offered.





ABOVE::  
#FDRL Hand Felted Deer

AT RIGHT:  
#FBWM Hand Felted Bunny



# in good company

## HAND FELTED WOOLIES

Felted and stitched by women artisans in Kathmandu, our felted friends are best buds for every adventure.

Additional animals available.