



ELEVATING ART AND ARTISAN.

MULXIPLY.COM



MULXIPLY
COLLABORATIVE

SPRING/SUMMER 2023



PRONOUNCED “MULTIPLY” –

our collection of modern apparel, jewelry, felted gifts and home goods is designed in Maine, inspired by the Himalayas, and made collaboratively by fair-wage artists and craftspeople in Nepal.

We create sustainable change by partnering with indigenous artisan groups to further their economic impact, interrupt the cycle of poverty, and keep heritage handicraft alive.

ELEVATING ART AND ARTISAN.



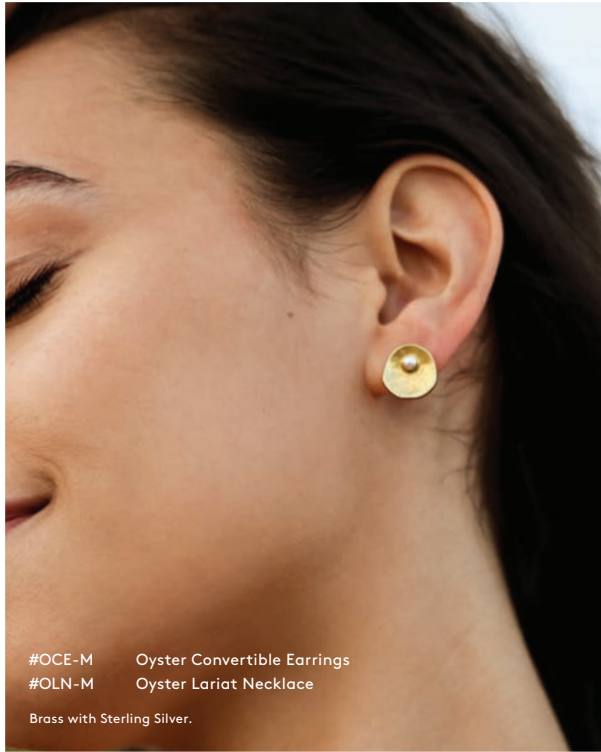
ORIGIN. WHERE IT BEGINS.

A COLLECTION OF ORGANIC SHAPES — INSPIRED BY THE DUST OF STARS AND THE SAND OF SEAS. PIECES THAT REFLECT THE ARTISTRY OF THE MAKER AND THE BEAUTY OF THE WEARER.



#OSE-B Origin Statement Earrings
#OLN-M Oyster Lariat Necklace

Shown in Brass, also available in Sterling Silver or Mixed Metals.



#OCE-M Oyster Convertible Earrings
#OLN-M Oyster Lariat Necklace
Brass with Sterling Silver.

TO THE JUBILANT SEA.





- #EMHE-B Embrace Hoop Earrings
- #PBNK-B Pebble Necklace
- #AER-B Aer Square Ring
- #WVR-B Wavy Ring

Shown in Brass. Also available in Sterling Silver with select styles in Mixed Metals.

SALT IN HER LUNGS. SAND IN HER TOES.
BRASS LIKE SUNSHINE ON HER SKIN.



- #SRHC-B Striate Reflected-H Cuff Ring
- #CCB-B Crown Cuff Bangle

Shown in Brass. Also available in Sterling Silver.



STRIATE: SHOWING LINES AND GROOVES

#SRHC-ST Striate Reflected-H Cuff Ring
#LOSR-B Long Oval Stick Ring

Available in Brass and Sterling Silver.



#SRHE-B Striate Mismatched Earrings
#SSR-B Striate Simple Ring

Shown in Brass, also available in Sterling Silver.

RIPPLE EFFECT



#EMN-B Embrace Link Necklace
#PBNK-B Pebble Necklace
#PDNK-B Pod Necklace

Shown in Brass. Also available in Sterling Silver with select styles in Mixed Metals.



#PSR-B Pebble Simple Ring

THE PEBBLE + POD COLLECTION —
BLENDING NATURE WITH LINEAR GEOMETRICS.

HAMMERED AND HONED



#SHN-B Minimal Stick Necklace
#YHSR-B Yala Statement Ring
#YHPR-B Yala Pinky Ring

Shown in Brass. Select styles available in Sterling Silver.

THE HAMMERED COLLECTION —
ANCIENT TECHNIQUES GIVE WAY TO MODERN SHAPES.



#HSE-B Hammered Stick Earrings
#PHN-B Tiny Palette Necklace
#SHN-B Minimal Stick Necklace

Shown in Brass, also available in Sterling Silver.

#A-ESDK
The Shirt Dress - Black



#YHE-B Yala Hoop Earrings

LIGHT AND SHADE

STYLES THAT CAPTURE THE LIGHT
NO MATTER HOW DARK IT MAY BE.



#OFHR-B Organic Shape Ring
#HCR-B Hammered Cuff Ring
#YHSR-B Yala Statement Ring
#YHPR-B Yala Pinky Ring
Shown in Brass. Also Available in Sterling Silver.



#SHRR-ST Ray Stacking Ring
#LOSR-ST Long Oval Stick Ring

THE EARTH DELIGHTS

SILHOUETTES THAT MIMIC
TREASURES INSPIRED BY NATURE.

#PJE-M
Piper Jacket Earrings

#SHAR-ST
Arch Stacking Ring*

#SHAR-ST
Arch Stacking Ring*

#SHDR-ST
Droplet Stacking Ring*

*Stacking Rings are
sold separately.

Available in Brass and
Sterling Silver.



#A-ESDG The Shirt Dress - Heather Grey
#LLNK-B Loop Link Necklace
#RDN-ST Rain Droplet Necklace



WIND DOWN

- #A-ESDG The Shirt Dress - Heather Grey
- #LRR-ST Large Rope Ring
- #SAB-ST Strength Bangle
- #RB-ST Rain Bangle

Jewelry shown in Sterling Silver. Also available in Brass with select styles in Mixed Metals.



#SAB-ST Strength Bangle
#RB-ST Rain Bangle
#RPR-ST Ripple Ring
#SHDR-ST Droplet Stacking Ring

THE RAIN AND STRENGTH COLLECTIONS ARE CREATED WITH THE SYNERGY OF DROP-LIKE ORBS. AT ONCE GRACEFUL AND POWERFUL — MUCH LIKE THOSE THAT MAKE AND WEAR THEM.



#SAR-ST Strength Adjustable Ring

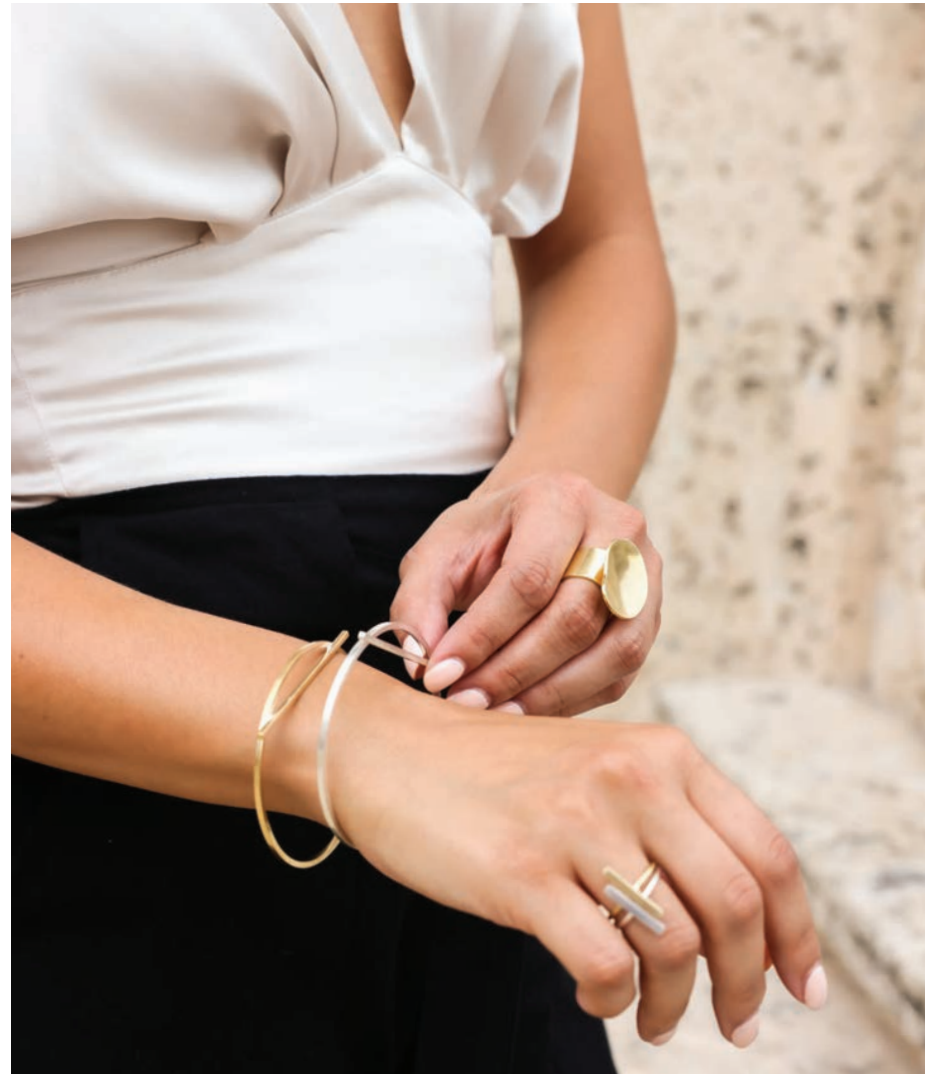
Available in Brass, Sterling Silver with select styles in Mixed Metals.



#RE-ST Rain Earrings
#RDN-ST Rain Droplet Necklace
#PDNK-ST Pod Necklace



THE EMBRACE COLLECTION — INTERSECTING LINES CREATE GRAPHIC SHAPES THAT EMBRACE ONE ANOTHER.



- #EMHE-B Embrace Hoop Earrings
- #EMB-B/ST Embrace Bangle
- #LOSR-B/ST Long Stick Oval Ring
- #PLR-B Adjustable Palette Ring

Available in Brass, Sterling Silver with select styles in Mixed Metals.



- #ENFN-B Enfold Necklace
- #MCNK-B Hammered Moon Coin Necklace
- #NMCR-B Moon Adjustable Cuff Ring
- #HCR-B Hammered Cuff Ring
- #NMOB-B Moon Oval Bangle
- #MCH-B Moon Coin Hoops

Shown in Brass, also available in Sterling Silver.



PART OF BEING A
SUSTAINABLE BRAND IS
CREATING ACCESSORIES
THAT CAN MINGLE
EFFORTLESSLY WITH
SEASONS PAST AND FUTURE.

- #OSE-B Origin Statement Earrings
- #MCNK-B Hammered Moon Coin Necklace

Shown in Brass, also available in Sterling Silver.



THE
**COLORBLOCK
MAXI DRESS**

#A-ECBD The Colorblock Maxi Dress
#OSE-B Origin Statement Earrings
#NMCR-B Moon Cuff Ring

Shown in Brass. Also available in Sterling Silver.

She looks and feels out-of-office.
A dress for vacation or even just
dreaming of getting away.

#SPT-ST SMOOTH PATH EARRINGS
#A-ECBD THE COLORBLOCK MAXI DRESS
Belt included. Available in Multicolor.
100% Handwoven Cotton.





THE
WIDE
LEG PANT



So comfortable they'll become your "uniform" pants. Elastic back with an attached tie-belt for added styling. Made with breezy handwoven cotton.

#A-EWPK
THE WIDE LEG PANT
Available in Black
100% Handwoven Cotton

Our handwoven Button Tunic goes from pants-on to pants-off quicker than you can say "beach day"!

#A-EBTO/KO
THE BUTTON TUNIC
Available in Oatmeal or Black
100% Handwoven Cotton



THE
BUTTON
TUNIC





THE SHIRT DRESS

Available in Black, Oatmeal, and Heather Grey
100% Handwoven Cotton. Carved Coconut Shell Buttons. Side Pockets.

#A-ESDG - Heather Grey
#A-ESDK - Black (at right)

Our Shirt Dress is a piece to
live in. Wear it as a dress, a
jacket, a cover-up or as a shirt.

Now available in 3 colors.



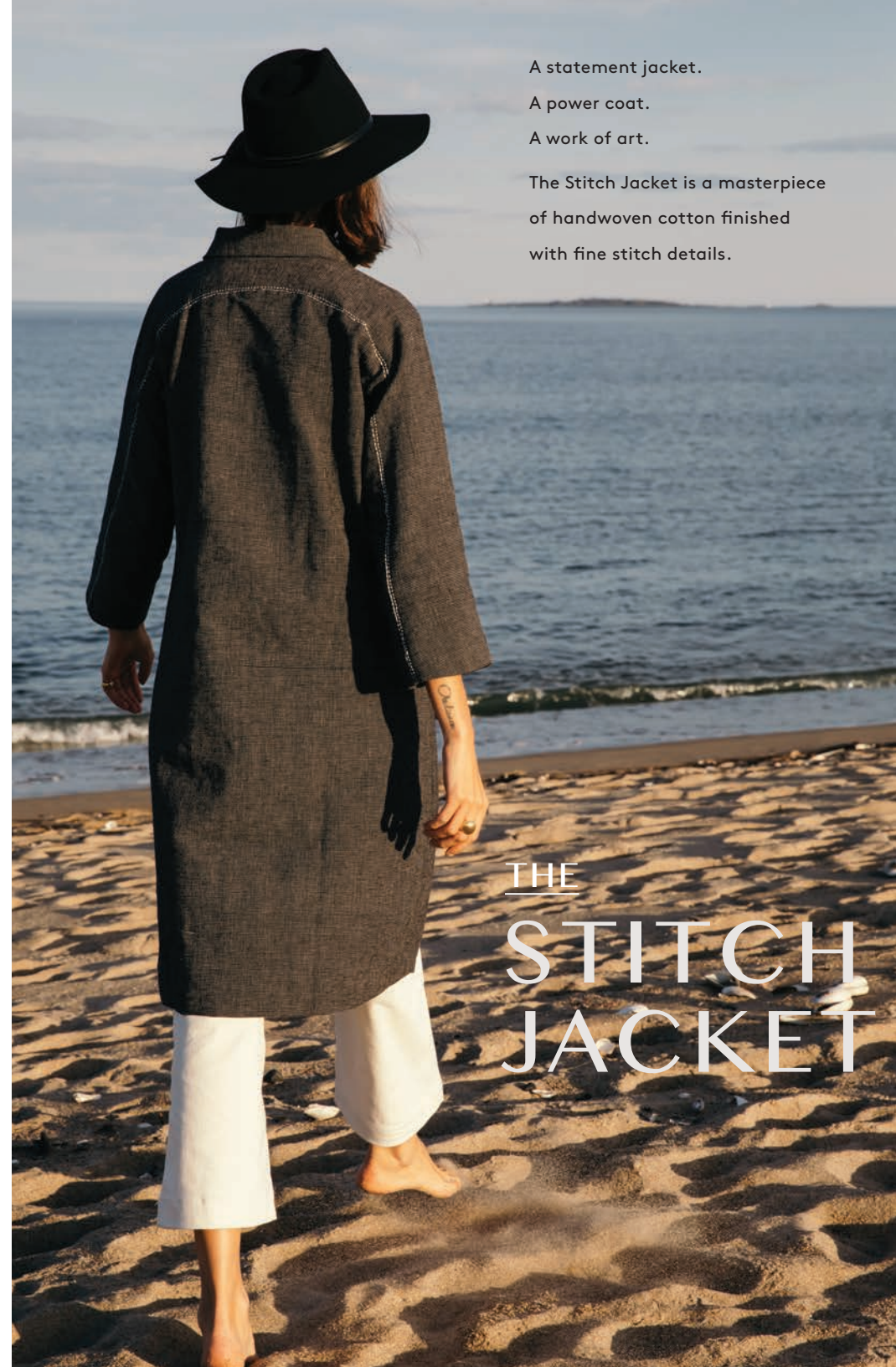
THE
**SHIRT
DRESS**



THE STITCH JACKET

Available in Black and White
100% Handwoven Cotton. Lined with Black Cotton. Side Pockets.

#A-ESJK- Black + White



A statement jacket.

A power coat.

A work of art.

The Stitch Jacket is a masterpiece
of handwoven cotton finished
with fine stitch details.

THE
STITCH
JACKET

Functionally designed
with well-cut details
that make this wardrobe
staple, anything but
ordinary.

THE BOXY SHIRT



THE BOXY SHIRT

Available in Black or White
100% Handwoven Cotton. Carved Coconut Shell Buttons.

#A-EBSK - Black

#A-EBSW - White

A-EBSPK
THE BALLOON SLEEVE
PINTUCK BLOUSE
Available in Black or White
100% Handwoven Cotton

THE
PINTUCK

BALLOON
SLEEVE

Billowy-soft handwoven cotton
and artisan-attention created
a blouse that is equal parts
statement piece and comfort.

#A-EBSPW THE BALLOON SLEEVE PINTUCK BLOUSE
#A-EWPK THE WIDE LEG PANT



- #CPX-CDE-BR Canyon Drop Earrings
- #CPX-RODE-BT Reeded Oval Drop Earrings
- #CPX-HME-BC Half Moon 2-in-1 Earrings

Additional styles and ceramic finishes available.

EMBER COLLECTION



- #CPX-CDE-BT Canyon Drop Earrings
- #SHAR-B Arch Stacking Ring
- #SHDR-B Droplet Stacking Ring
- #SHRR-B Ray Stacking Ring
- #YHPR Yala Pinky Ring
- #HCB-B Hammered Cuff Bangle

Shown in Brass. Selecte styles available in Sterling Silver.



THE EMBER COLLECTION IS A COLLABORATION OF MULPIPLY'S BRASS ELEMENTS AND CAMPFIRE POTTERY'S CERAMIC PIECES. EACH IS ONE-OF-A-KIND – HANDFORGED WEARABLE ART.

THOUGHTFUL LIVING.

- #E-MBR-O Oval Wreath
- #E-KNR-B "O" Napkin Rings - Set of 2
- #E-KHCK-B Herb + Cheese Knife



We partnered with Campfire Pottery to design this collection of brass utensils and accessories for home. Each is hand-forged in hammered brass by MultiPLY's team of artisans.

- #E-KSSS-B Long Serving Spoon
- #E-KSSF-B Long Serving Fork
- #E-KOSS-B Oval Serving Spoon
- #E-KCS1-B Coffee Scoop

HERE'S TO THE SOFTER THINGS IN LIFE.

Our hand-felted woolies have been with us since our beginning. Each of them felted and stitched by hand by women artisans in Nepal. Crafted via age-old techniques to create smiles for all generations.



#FCGL Large Felted Corgi

AT RIGHT:

#FSWS Small White Felted Sheep

#FSGS Small Grey + White Felted Sheep



WITH EARNEST, CURIOUS
FACES AND HAND-STITCHED
WHISKERS AND PAWS –
NO ONE CAN RESIST OUR
WOOLIES, BIG OR SMALL.



#FDRL Large Felted Deer



THE BEST PALS

#FDS
#FFL

Small Felted Terrier Dog
Large Felted Fox

#FDHL
#FGRL

Large Felted Dachshund
Large Felted Golden Retriever

Most Felted Woolies are
available in Small and
Large and sometimes
even Giant!



POM POM SLIPPERS FOR EVERYONE.
AVAILABLE IN 6 COLORS + 3 SIZES. HAPPY FEET ENSUE.



#PSGM Pom Pom Slippers - Light Grey/Muted Rose
#PSDG Pom Pom Slippers - Dark Grey/Gold



#PSDR Pom Pom Slippers - Dark Grey/Rust
#PSGM Pom Pom Slippers - Light Grey/Muted Rose
#PSCH Pom Pom Slippers - Champagne
#PSDG Pom Pom Slippers - Dark Grey/Gold
#PSDK Pom Pom Slippers - Dark Grey
#PSGW Pom Pom Slippers - Light Grey/White

DO A
LITTLE
DANCE.