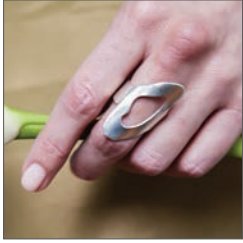


CANYON COLLECTION

This organic shape is both strong and delicate and symbolic of the resilience formed in nature's canyons.



NEW

CANYON STATEMENT RING

- 0.75" wide band. 1.4" tall
- Adjustable: one size fits most

#CSR-B	Brass	41.
#CSR-ST	Sterling	84.



NEW

CANYON TINY CHARM NECKLACE

- 0.5" tall charm
- 16" chain adjustable to 20"

#CTCN-B	Brass	27.
#CTCN-ST	Sterling	36.



NEW

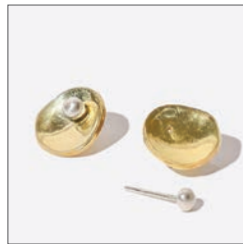
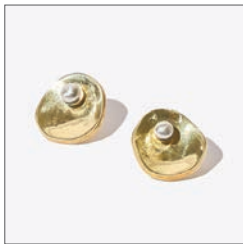
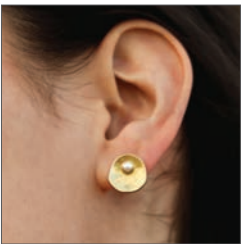
CANYON TINY STUD EARRINGS

- Approximately 0.5" tall

#CTSE-B	Brass	24.
#CTSE-O	Oxi Brass	24.
#CTSE-ST	Sterling	32.

OYSTER COLLECTION

An abstract oyster – inspired by the sea. Designed in Maine, made by hand in Nepal.



OYSTER CONVERTIBLE EARRINGS

- 2-piece earring
- Wear 4MM Sterling orb with/without brass component

#OCE-M	Brass/Sterling	29.
--------	----------------	-----



OYSTER LARIAT NECKLACE

- 18" chain
- Brass chain and shape with Sterling stick

#OLN-M	Brass/Sterling	34.
--------	----------------	-----

GRANULE COLLECTION

A collection that's both delicate and strong, each small orb represents a granule of sand on a smooth architectural plane.



**OVAL LOCKET NECKLACE**

- Pendant: Approximately 1" wide by 0.75" tall
- Chain: 20", adjustable to 24"

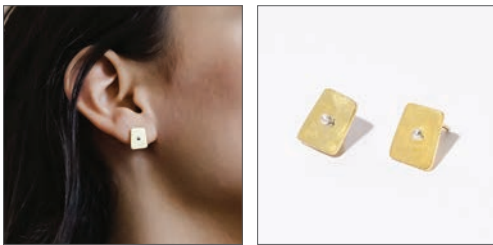
#ORL-B	Brass	44.
#ORL-ST	Sterling	79.



**GRANULE CHARM NECKLACE**

- Pendant: Approximately 0.3" wide by 0.5" tall
- Chain: 16", adjustable to 20"

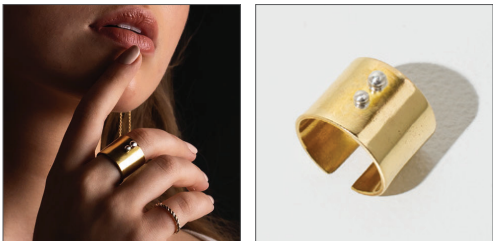
#GNK-BST	Brass/Sterling	34.
----------	----------------	-----



**GRANULE STUD EARRINGS**

- Asymmetrically sized at approximately 0.3 inches wide by 0.4 inches tall

#GER-BST	Brass/Sterling	29.
----------	----------------	-----



**THE I: RING**

- Fully adjustable: one size fits most
- .75" wide band
- 2 Sterling dots are the morse code symbol for "I"

#ICR-BST	Brass/Sterling	38.
----------	----------------	-----



**DOT HUGGIE EARRINGS**

- U Shape hugs the ear held together with Dot Stud
- Dot Stud can be worn on its own

NEW

#DTHE-M	Brass/Oxi Stud	32.
#DTHE-BST	Brass/Sterling Stud	32.
#DTHE-ST	All Sterling	48.



**DASH HUGGIE EARRINGS**

- U Shape hugs the ear held together with Dash Stud
- Dash Stud can be worn on its own

NEW

#DSHE-M	Brass/Oxi Stud	32.
#DSHE-BST	Brass/Sterling Stud	32.
#DSHE-ST	All Sterling	48.

**RAIN COLLECTION** | Inspired by the monsoon rains that fall upon Nepal in late Spring + Summer. Hand-forged in Brass and Sterling by fair-wage mastercraftspeople.



**RAIN HOOPS**

- 2.5" diameter

#RHE-B	Brass	60.
#RHE-ST	Sterling	99.



**RAIN EARRINGS**

- 2" long

#RE-B	Brass	36.
#RE-O	Brass/Oxi	36.
#RE-ST	Sterling	64.



**RAIN BANGLE**

- 2.75" diameter

#RB-B	Brass	42.
#RB-ST	Sterling	76.



**RAIN RING**

- Available in size 6, 7 and 8. Specify when ordering.

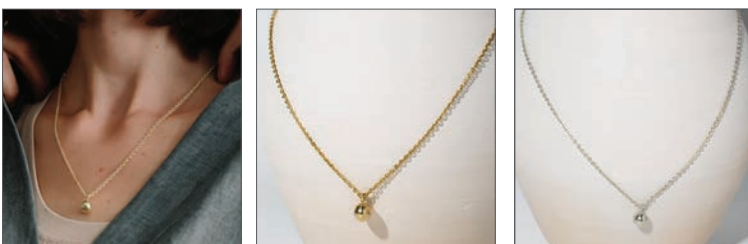
#RR-B	Brass	28.
#RR-ST	Sterling	36.



**RIPPLE RING**

- Fully adjustable: one size fits most

#RPR-B	Brass	28.
#RPR-ST	Sterling	36.



**RAIN DROPLET NECKLACE**

- 16" chain, adjustable to 20"

#RDN-B	Brass	24.50
#RDN-ST	Sterling	39.

**STRENGTH COLLECTION** | Two orbs take the shape of fists -- representing power in togetherness. Available in Brass and Sterling.



**STRENGTH ADJUSTABLE RING**

- Fully adjustable: one size fits most

#SAR-B	Brass	36.
#SAR-ST	Sterling	54.



**STRENGTH PENDULUM EARRINGS**

- 1 7/8" drop.
- Convertible: wear stud without pendulum

#SPE-B	Brass	38.
#SPE-ST	Sterling	59.



**STRENGTH ADJUSTABLE BANGLE**

- 2.75" diameter.
- Fully adjustable: one size fits most

#SAB-B	Brass	42.
#SAB-ST	Sterling	91.

**ENFOLD COLLECTION** | Simple, elegant shapes to wear alone or to layer with everyday looks.



**ENFOLD STUD EARRINGS**

- 1" wide x 0.75" tall

#ENFE-B	Brass	26.
#ENFE-ST	Sterling	33.



**ENFOLD NECKLACE**

- Charm: 1" wide x 0.75" tall
- 16" chain adjustable to 20"

#ENFN-B	Brass	27.
#ENFN-ST	Sterling	36.



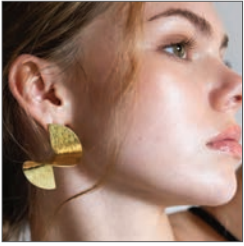
**ENFOLD RING**

- 1.125" tall x 0.75" wide
- Fully adjustable: one size fits most



#ESR-B	Brass	42.
#ESR-ST	Sterling	87.

PIROUETTE | Masterfully curved statement earrings in hammered Brass or Sterling Silver.



**PIROUETTE STATEMENT EARRINGS**

- Approximately 1.75" tall. Lightweight.

#PER-B Brass 47.

#PER-ST Sterling 94.

CAIRN COLLECTION | Inspired by the earth and adventure, these modern shapes mimic cairns or stacks of stones created as trail markers. In hammered Brass or Sterling Silver.



**CAIRN STUD EARRINGS**

- Approximately 0.75" tall

#CAER-B Brass 28.

#CAER-ST Sterling 42.



**CAIRN CASCADE EARRINGS**

- Approximately 2.25" long

#CACER-B Brass 38.

#CACER-ST Sterling 68.



**SKIPPING STONES DANGLE EARRINGS**

- Approximately 1.25" tall



#SSDE-B Brass 44.

#SSDE-ST Sterling 84.



**SKIPPING STONES NECKLACE**

- Pendant is 0.8" tall
- 16" chain adjustable to 20"



#SSN-B Brass 38.

#SSN-ST Sterling 74.



**SKIPPING STONES RING**

- Stone is approximately 0.8" wide



#SSR-B Brass 39.

#SSR-ST Sterling 72.

**HAMMERED COLLECTION** | Forged and hammered, each piece is one-of-a-kind.  
Handmade with heritage techniques.



**HAMMERED CUFF RING**

- 0.75" wide band.
- Adjustable: one size fits most

#HCR-B	Brass	36.
#HCR-ST	Sterling	48.



**HAMMERED CUFF BANGLE**

- 2.75 inch diameter.
- One size fits most

#HCB-B	Brass	41.
#HCB-ST	Sterling	77.

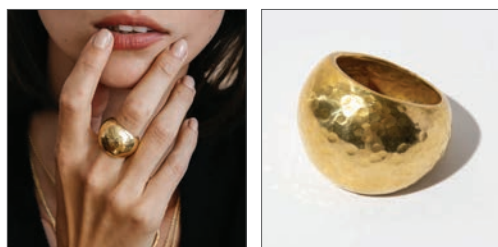
**YALA HERITAGE COLLECTION** | Designed in collaboration with our artisan team in Nepal.  
Modern shapes forged with ancient methods.



**MINI YALA HOOP EARRINGS**

- Approximately 0.8" wide
- Hammered Brass or Sterling Silver

#YMH-B	Brass	34.
#YMH-ST	Sterling	48.

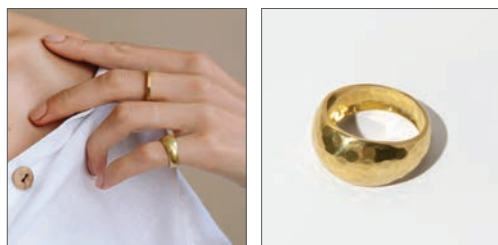


**YALA STATEMENT RING**

- Available in size 6, 7, 8 and 9\*
- Hammered Brass

#YHSR	Brass	34.
-------	-------	-----

\*Specify size when ordering

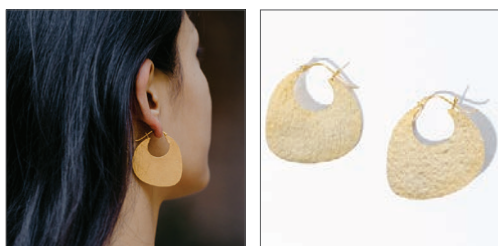


**YALA PINKY RING**

- Available in size 5 and 6\*
- Hammered Brass

#YHPR	Brass	27.
-------	-------	-----

\*Specify size when ordering

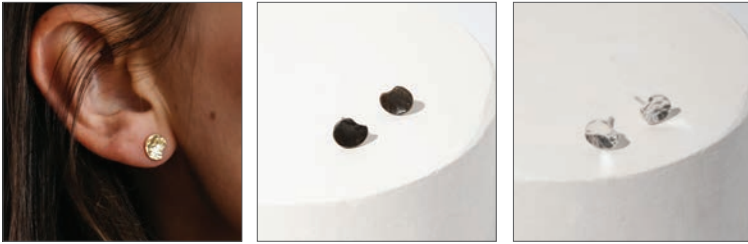


**YALA HOOP EARRINGS**

- 2" tall x 2" wide
- Hammered Brass

#YHE-B	Brass	29.
--------	-------	-----

**HAMMERED COLLECTION** | Forged and hammered into organic shapes.  
Each piece is one-of-a-kind. Handmade with heritage techniques.



**TINY PALETTE EARRINGS**

- 0.2 inch diameter

#PHME-B	Brass	24.
#PHME-O	Oxidized Brass	24.
#PHME-ST	Sterling	32.



**TINY PALETTE NECKLACE**

- 16 inch chain, adjustable to 20 inches

#PHN-B	Brass	27.
#PHN-ST	Sterling	36.



**MINIMAL STICK NECKLACE**

- 20 inch chain, adjustable to 24 inches

#SHN-B	Brass	34.
#SHN-ST	Sterling	44.



**MINIMAL STICK LINK BRACELET**

- 7 inch chain

#HSBR-B	Brass	27.
#HSBR-ST	Sterling	36.



**MINIMAL STICK EARRINGS**

- Approximately 2" long

#HSE-B	Brass	32.
#HSE-ST	Sterling	42.



**ADJUSTABLE PALETTE RING**

- 1.25" design with .75" adjustable band

#PLR-B	Brass	38.
#PLR-ST	Sterling	71.

**POOL COLLECTION** | Delicate organic shapes join together to create light-catching pieces. Equal parts elegant and strong. Hammered finish.



**POOL STATEMENT EARRINGS**

• 2 inches long

#PE-B	Brass	34.
#PE-O	Oxidized Brass	34.
#PE-ST	Sterling	47.



**POOL DANGLE EARRINGS**

• 2 inches long

#PDE-B	Brass	38.
#PDE-ST	Sterling	65.



**POOL STATEMENT RING**

• Available in Ring Size 7

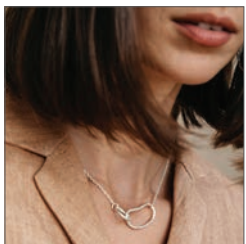
#PR-B	Brass	34.
#PR-ST	Sterling	46.



**POOL LINK STATEMENT NECKLACE**

• 18 inches long

#PLN-B	Brass	82.
#PLN-ST	Sterling	147.



**POOL MINIMAL NECKLACE**

• 14 inches long

#PSN-B	Brass	41.
#PSN-ST	Sterling	58.



**POOL LINK BRACELET**

• 8.25 inches long

#PLB-B	Brass	47.
#PLB-ST	Sterling	92.



RIDGE COLLECTION

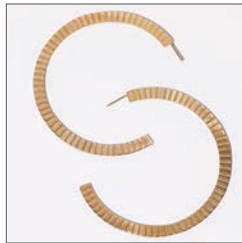
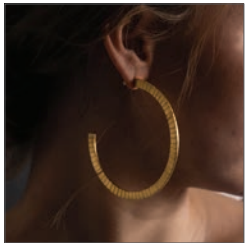
Linear design elements create a modern and minimalist aesthetic. This collection is designed for layering. In Brass and Sterling.



**RIDGE ARCH STUDS**

- Approximately 0.8" long, 0.15" wide.

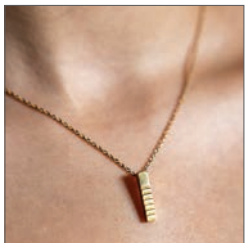
#RSS-B Brass	26.
#RSS-ST Sterling	34.



**RIDGE HOOP EARRINGS**

- 2.75" diameter. Lightweight.

#RHP-B Brass	36.
#RHP-ST Sterling	98.



**RIDGE CHARM NECKLACE**

- Approximately 0.8" long, 0.15" wide
- 16 inch chain, adjustable to 20 inches
- Pairs well with Ridge Locket Necklace

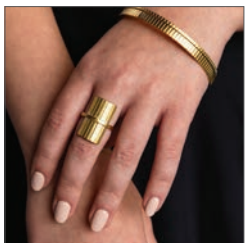
#RCN-B Brass	29.
#RCN-ST Sterling	39.



**RIDGE LOCKET NECKLACE**

- Approximately 1" long, 0.5" wide
- 20 inch chain, adjustable to 22 inches
- Pairs well with Ridge Charm Necklace

#RLN-B Brass	36.
#RLN-ST Sterling	64.



**RIDGE RECTANGLE RING**

- Available in size 7
- Curved charm is approx. 1" long by 0.5" wide
- Band is 1mm square shape

#RRR-B Brass	41.
#RRR-ST Sterling	68.



**RIDGE CUFF RING**

- Available in 7. Fully adjustable.
- Band width is 0.7"

#RCR-B Brass	36.
#RCR-ST Sterling	49.

**RIDGE COLLECTION** | Linear design elements create a modern and minimalist aesthetic. This collection is designed for layering. In Brass and Sterling.



**RIDGE SIMPLE BAND RING**

- Band is 3mm wide, 2 mm thick
- Ideal for stacking. Sold separately
- Available in size 6, 7 and 8. Specify when ordering

#RSB-B	Brass	18.
#RSB-ST	Sterling	24.



**RIDGE BANGLES - 2 WIDTHS**

- **THIN:** 2.75" diameter, 2mm wide
- **MEDIUM:** 2.75" diameter, 5mm wide
- Ideal for stacking. Sold separately.

#THIN: RTB-B	Brass	23.
#THIN: RTB-ST	Sterling	44.
#MEDIUM: RMB-B	Brass	28.
#MEDIUM: RMB-ST	Sterling	68.



**MINIMALIST HORIZON RING**

- Available in size 6, 7, and 8.
- Specify size when ordering.

#HZR-B	Brass	18.
#HZR-ST	Sterling	28.

**PATH COLLECTION** | A collection that celebrates everyone's unique path in life. Handmade in smooth Brass or Sterling Silver.



**SMOOTH PATH EARRINGS**

- 3" long

#SPT-B	Brass	32.
#SPT-ST	Sterling	68.



**SMOOTH PATH RING**

- .75" wide band
- Fully adjustable: one size fits most

#SPR-B	Brass	36.
#SPR-ST	Sterling	71.

BALANCE COLLECTION

A strong balance of minimal, modern shapes in mixed metals.  
Designed in Maine, made collaboratively in Nepal.



**BALANCE CONVERTIBLE RING**

- Top: 0.75" x .5", Bottom: 1.5" x 1"
- Convertible: Stud can be worn separately

#BHCE-B	Brass	31.
#BHCE-M	Brass/Oxi	31.
#BHCE-ST	Sterling	72.



**BALANCE STUD EARRINGS**

- 0.75" x .5"

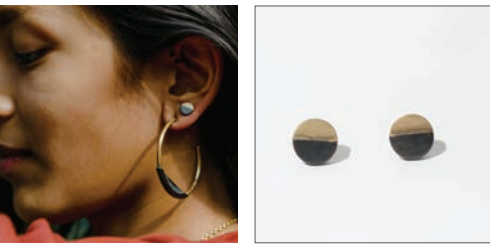
#BHCS-B	Brass	19.
#BHCS-O	Oxidized Brass	19.



**EARTH + SKY HOOP EARRINGS**

- 2" diameter

#ESHE-M	Brass/Oxi	34.
---------	-----------	-----



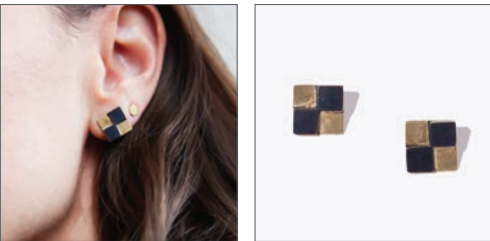
**DUO DOT EARRINGS**

- 0.25" diameter

#DDME	Brass/Oxi	24.
-------	-----------	-----

WEAVE COLLECTION

Squares and lines. Warp and weft.  
Designed in Maine, made collaboratively in Nepal.



**TINY DUO CHECKERS EARRINGS**

- 0.4"

#TCDE-M	Brass/Oxi	26.
---------	-----------	-----

NEW



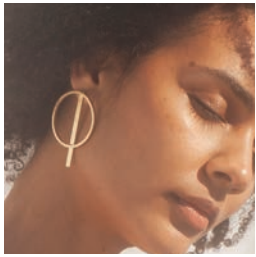
**WEAVE STATEMENT EARRINGS**

- 1.3" wide x 2" long
- Lightweight

#WVSE-B	Brass	38.
#WVSE-O	Sterling	72.

NEW

**EMBRACE COLLECTION** | Intersecting lines create graphic shapes that embrace one another. Designed in Maine, made collaboratively in Nepal.



**EMBRACE CONVERTIBLE EARRINGS**

- Circle: 1.75" diameter, Stick: 2.5" long
- Convertible: Circle can be worn separately

#EME-B	Brass	34.
#EME-M	Brass/Oxi	34.
#EME-ST	Sterling	66.



**EMBRACE HOOP EARRINGS**

- 2.5" diameter

#EMHE-B	Brass	36.
#EMHE-O	Oxidized Brass	36.
#EMHE-ST	Sterling	76.



**EMBRACE BANGLE**

- 2.75" diameter

#EMB-B	Brass	33.
#EMB-ST	Sterling	56.



**EMBRACE LINK BRACELET**

- 7" chain

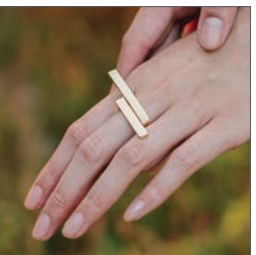
#EML-B	Brass	28.
#EML-ST	Sterling	44.



**EMBRACE LINK NECKLACE**

- 16" chain

#EMN-B	Brass	32.
#EMN-ST	Sterling	56.



**EMBRACE WRAP RING**

- Top is 2.5" wide
- Adjustable: one size fits most

#EWR-B	Brass	39.
#EWR-ST	Sterling	68.

**LOOP COLLECTION** | Elegant and strong, various loops link together to catch the light.  
Available in Brass, Mixed Metals and Sterling Silver.



**LOOP STUD EARRINGS**

- 1.25" long

#LER-B	Brass	19.
#LER-ST	Sterling	26.



**LOOP DANGLE EARRINGS**

- 2.25" long

#LDE-B	Brass	34.
#LDE-ST	Sterling	44.



**LOOP LINK BRACELET**

- 8.25" long

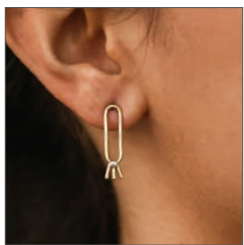
#LLB-B	Brass	38.
#LLB-ST	Sterling	66.



**LOOP LINK NECKLACE**

- 18" chain

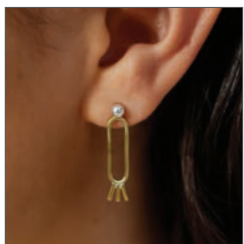
#LLN-B	Brass	48.
#LLN-ST	Sterling	99.



**LARK EARRINGS**

- Brass with 4mm Sterling Orb
- 1 inch long

#LLE-M	Brass/Sterling	29.
--------	----------------	-----



**PIPER JACKET EARRINGS**

- Convertible style with 4mm Sterling Orb which can be worn separately.
- 1 inch long

#PJE-M	Brass/Sterling	32.
--------	----------------	-----

**MOON COLLECTION** | An abstract take on the starry nights in the moody Himalayas. Nature is always a source of inspiration. Artisan-made in Brass and Sterling Silver.



**MINI ORIGIN EARRINGS**

- 0.6" tall x 0.7" wide
- Small holes let the light through

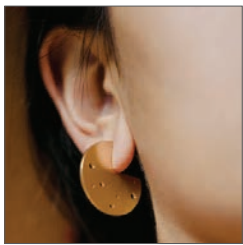
#MOE-B	Brass	28.
#MOE-ST	Sterling	36.



**ORIGIN STATEMENT EARRINGS**

- Approximately 2 inches tall. Lightweight.
- Small holes let the light through

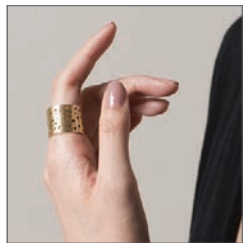
#OSE-B	Brass	44.
#OSE-ST	Sterling	77.



**MOON COIN HOOPS**

- 1" shape

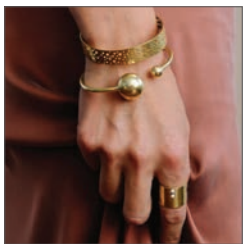
#MCH-B	Brass	29.
#MCH-ST	Sterling	48.



**MOON ADJUSTABLE CUFF RING**

- .75" wide band.
- Adjustable: one size fits most

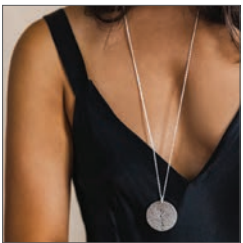
#NMCR-B	Brass	36.
#NMCR-ST	Sterling	58.



**MOON OVAL BANGLE**

- 3" diameter

#NMOB-B	Brass	46.
#NMOB-ST	Sterling	88.



**HAMMERED MOON COIN NECKLACE**

- 1.4" diameter
- 30-inch chain

#MCNK-B	Brass	48.
#MCNK-ST	Sterling	120.

PEBBLE + POD COLLECTION

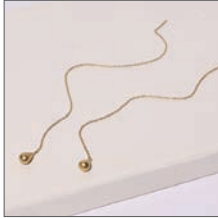
Inspired by nature's organic shapes balanced with smooth architectural shapes.



**POD DROPLET CHAIN BRACELET**

- Chain is 6.5" long with extender to 7"
- Droplet charm is 7mm

#PDLB-B	Brass	27.
#PDLB-ST	Sterling	38.



**POD DROPLET THREADER EARRINGS**

- 6.5" long with 10mm thin threading post
- Droplet charm is 7mm

#PDTE-B	Brass	29.
#PDTE-ST	Sterling	41.



**DROPS OF SUN CHARM NECKLACE**

- Charm is 0.8" wide with hanging droplet
- 20" chain adjustable to 22"
- Pairs well with Ray Pendant Necklace

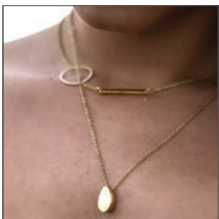
#PSCN-B	Brass	36.
#PSCN-ST	Sterling	49.



**POD PENDANT NECKLACE**

- 0.75" wide 1" long
- 18" chain adjustable to 20"
- Pairs well with the Pebble Charm Necklace

#PDNK-B	Brass	46.
#PDNK-ST	Sterling	119.



**PEBBLE CHARM NECKLACE**

- 0.25" wide 0.5" long
- 18" chain adjustable to 20"
- Pairs well with the Pod Pendant Necklace

#PBNK-B	Brass	29.
#PBNK-ST	Sterling	44.



**PEBBLE SIMPLE RING**

- Available in size 6, 7, and 8

#PSR-B	Brass	28.
#PSR-ST	Sterling	42.



**LONG OVAL STICK RING**

- Available in size 6, 7 and 8, specify size when ordering
- Sold separately. Can be worn stacked.

#LOSR-B	Brass	19.
#LOSR-ST	Sterling	26.

RAY COLLECTION

From minimalist to maximalist, each of these pieces is made to wear on its own or layered to create your own look. In Brass and Sterling Silver.



**RAY PENDANT NECKLACE**

- Pendant is 1.2" wide
- 22" chain adjustable to 24"
- Pairs well with Drops of Sun Charm Necklace

#RPN-B	Brass	41.
#RPN-ST	Sterling	66.



**RAY EARRINGS**

- Approximately 0.75 inches long.

#HRER-B	Brass	29.
#HRER-ST	Sterling	39.



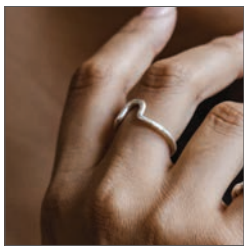
**RAY STACKING RING**

- Available in size 6, 7 and 8, specify size when ordering
- 2mm diameter hammered finish

#SHRR-B	Brass	23.
#SHRR-ST	Sterling	29.

STACKING RINGS

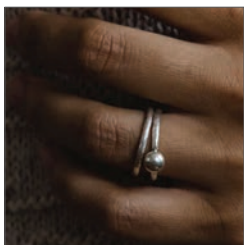
From minimalist to maximalist, each of these pieces is made to wear on its own or layered to create your own look. In Brass and Sterling Silver.



**ARCH STACKING RING**

- Available in size 6, 7 and 8, specify size when ordering
- 2mm diameter hammered finish

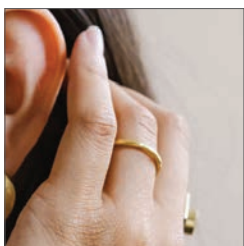
#SHAR-B	Brass	17.
#SHAR-ST	Sterling	23.



**DROPLET STACKING RING**

- Available in size 6, 7 and 8, specify size when ordering
- 2mm diameter hammered finish, 6mm orb

#SHDR-B	Brass	19.
#SHDR-ST	Sterling	24.



**SIMPLE STACKING RING**

- Available in size 6, 7 and 8, specify size when ordering
- 2mm diameter hammered finish

#SHR-B	Brass	14.
#SHR-ST	Sterling	18.



WINDOW COLLECTION

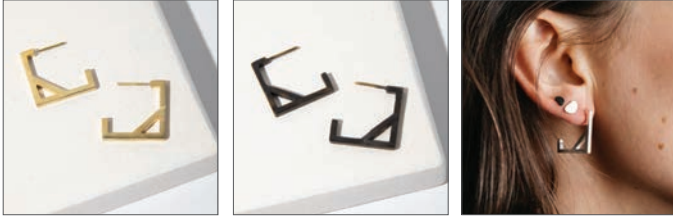
Inspired by window shapes and the contrast of light and dark.  
Available in Brass, Mixed Metals and Sterling Silver.



**WINK CIRCLE EARRINGS**

- 1" diameter

#EMWCE-B	Brass	28.
#EMWCE-O	Oxidized Brass	28.
#EMWCE-ST	Sterling	49.



**SQUARE HOOP EARRINGS**

- 1" diameter

#FSH-B	Brass	28.
#FSH-O	Oxidized Brass	28.
#FSH-ST	Sterling	49.



**WINDOW DANGLE EARRINGS**

- 2.75" drop

#WDE-B	Brass	38.
#WDE-M	Brass/Oxi	38.
#WDE-ST	Sterling	88.



**FOUNDATION SQUARE RING**

- Approximately size 6.5

#FR-B	Brass	42.
#FR-ST	Sterling	71.



**SQUARE STACKING RING**

- Available in size 6, 7, and 8
- Sold separately. Specify size when ordering.

#FSR-B	Brass	29.
#FSR-ST	Sterling	43.

WAVE COLLECTION | An ode to the sea, these organic shapes create fluid silhouettes.



**WAVY STUD EARRINGS**

- 0.5" long
- |         |                 |     |
|---------|-----------------|-----|
| #WSE-B  | Brass           | 19. |
| #WSE-O  | Oxidized Brass  | 19. |
| #WSE-ST | Sterling Silver | 28. |



**WAVY BAND RING**

- Available in size 6, 7 and 8, specify size when ordering
  - 2mm diameter
- |         |          |     |
|---------|----------|-----|
| #WVR-B  | Brass    | 18. |
| #WVR-ST | Sterling | 24. |

CROWN COLLECTION | Designed in collaboration with our artisan team in Nepal. A wearable reminder that you are a treasure. Unisex.



**CROWN HOOP EARRINGS**

- Diameter 0.8"
- |         |                |     |
|---------|----------------|-----|
| #CHE-B  | Brass          | 34. |
| #CHE-O  | Oxidized Brass | 34. |
| #CHE-ST | Sterling       | 64. |



**CROWN BANGLE**

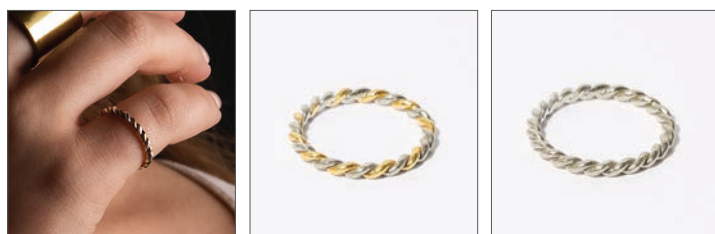
- 2" tall x 3" wide
  - Fully adjustable. One size fits most.
- |        |       |     |
|--------|-------|-----|
| #CCB-B | Brass | 42. |
|--------|-------|-----|

ROPE RINGS | Designed to wrap around your finger in multiples or simply on its own. A nautical reminder of our design studio in Maine.



**LARGE ROPE RING**

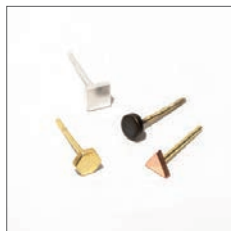
- Available in size 6, 7, & 8, specify when ordering
  - Twisted 2mm diameter
- |          |                |       |
|----------|----------------|-------|
| #LRR-B   | Brass          | 19.   |
| #LRR-BST | Brass/Sterling | 24.50 |
| #LRR-ST  | Sterling       | 29.50 |



**MINI ROPE RING**

- Available in size 5, 6, 7, & 8, specify when ordering
  - Twisted 1mm diameter
- |          |                |     |
|----------|----------------|-----|
| #MRR-B   | Brass          | 14. |
| #MRR-BST | Brass/Sterling | 16. |
| #MRR-ST  | Sterling       | 19. |

**STUD EARRINGS** | Sometimes simplicity is the best solution. Minimal and at times mismatched shapes to complement any outfit. Handforged by master craftsmen in Nepal.



**CIRCLE STUDS**

- #CSE-B Brass 19.
- #CSE-ST Sterling 26.

**TINY SHAPES STUDS SET OF 4**

- #TSSE-M Mixed Metals 29.

**TERRAZZO STUDS SET OF 4**

- #TRZSE-M Mixed Metals 29.



**XO STUDS**

- #XOSE-B Brass 19.
- #XOSE-O Oxidized Brass 19.
- #XOSE-ST Sterling 26.

**MOSS STUDS**

- #MOSE-B Brass 22.
- #MOSE-ST Sterling 27.

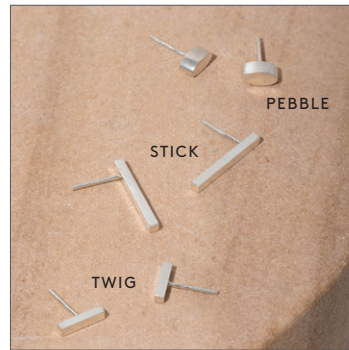
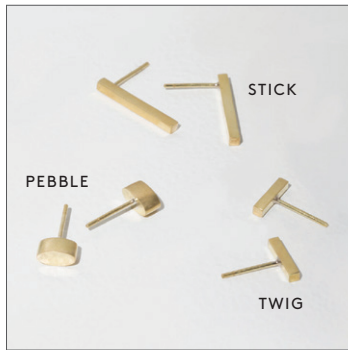
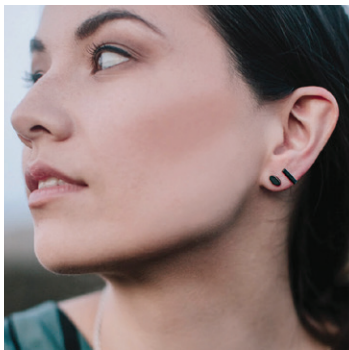


**FLORA STUDS**

- #FLSE-B Brass 22.
- #FLSE-ST Sterling 27.



**FORAGE STUDS** | Delicate shapes that nod to the treasures found in nature. Available in 3 metals. Forged by master craftsmen in Nepal. Sold separately or as a set of 3.



**BRASS**

- #FPE-B Pebble 19.
- #FTE-B Twig 18.
- #FSE-B Stick 19.
- #FEST-B Set of 3 52.

**OXIDIZED BRASS**

- #FPE-O Pebble 19.
- #FTE-O Twig 18.
- #FSE-O Stick 19.
- #FEST-O Set of 3 52.

**STERLING**

- #FPE-ST Pebble 26.
- #FTE-ST Twig 25.
- #FSE-ST Stick 26.
- #FEST-ST Set of 3 74.

EMBER COLLECTION

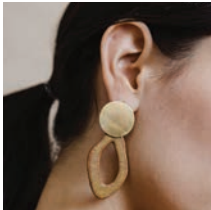
Made in collaboration with Campfire Pottery in Maine and MulxiPLY's brass artisans in Nepal. Bringing together local and global artisan communities.



**REEDED FAN DROP EARRINGS**

- Brass disc is 1" wide
- Pottery piece drops 0.75"

#CPX-RFDE-BR Brass | Raku Pottery\* 46.  
#CPX-RFDE-BT Brass | Terracotta Pottery 46.



**CANYON DROP EARRINGS**

- Brass disc is 1" wide
- Pottery piece drops 0.75"

#CPX-CDE-BR Brass | Raku Pottery\* 48.  
#CPX-CDE-BT Brass | Terracotta Pottery 48.



**SMOOTH OVAL DROP EARRINGS**

- Brass disc is 1" wide
- Pottery piece drops 0.75"

#CPX-SODE-BR Brass | Raku Pottery\* 48.  
#CPX-SODE-BT Brass | Terracotta Pottery 48.



**REEDED OVAL DROP EARRINGS**

- Brass disc is 1" wide
- Pottery piece drops 0.75"

#CPX-RODE-BR Brass | Raku Pottery\* 48.  
#CPX-RODE-BT Brass | Terracotta Pottery 48.



**PILLAR EARRINGS**

- 1.5" tall x .5" wide
- Convertible: Brass stud can be worn separately

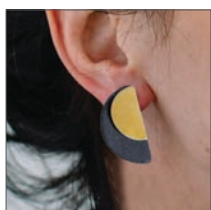
#CPX-PE-BC Brass | Charcoal Pottery 32.  
#CPX-PE-BR Brass | Raku Pottery\* 32.  
#CPX-PE-BT Brass | Terracotta Pottery 32.



**STONE EARRINGS**

- 1.5" tall x 1" wide
- Convertible: Brass stud can be worn separately

#CPX-SE-BR Brass | Raku Pottery\* 32.  
#CPX-SE-BC Brass | Charcoal Pottery 32.  
#CPX-SE-BT Brass | Terracotta Pottery 32.



**HALF MOON EARRINGS**

- 1.5" tall x 1" wide
- Convertible: Brass stud can be worn separately

#CPX-HME-BC Brass | Charcoal Pottery 32.  
#CPX-HME-OR Oxidized Brass | Raku Pottery\* 32.  
#CPX-HME-BT Brass | Terracotta Pottery 32. (not shown)

\*NOTE ABOUT RAKU POTTERY: Each Raku piece varies in color. Some pieces have more crackle and metallics, while some are more minimal and white. Differences can be expected and embraced. You make note on your order a preference for lighter or darker, but their availability cannot be guaranteed.