

MULXIPLY x EKADESMA

A capsule collection of carefully made apparel designed and produced in collaboration with Ekadesma Nepal. Each piece is carefully crafted with hand-loomed cotton, often finished with hand-stitched details and buttons carved out of coconut shells.



**TIERED RUFFLE DRESS - BLACK**

- Handwoven 100% cotton
  - Midi Length, multi-tier cut with piped seams
  - Puffed sleeves with elastic
  - Functionally cut in 4 sizes:
    - S (US size 2-4)
    - M (US size 6-8)
    - L (US size 10-12)
    - XL (US size 14-16)
- SPECIFY SIZE WHEN ORDERING**

#A-ETSDK-S/M/L/XL Black 92.

Model is wearing a size Small.



**TIERED RUFFLE DRESS - GINGHAM**

- Handwoven 100% cotton in Black/Natural Gingham
  - Midi Length, multi-tier cut with piped seams
  - Puffed sleeves with elastic
  - Functionally cut in 4 sizes:
    - S (US size 2-4)
    - M (US size 6-8)
    - L (US size 10-12)
    - XL (US size 14-16)
- SPECIFY SIZE WHEN ORDERING**

#A-ETSDG-S/M/L/XL B/N Gingham 92.

Model is wearing a size Small.



**BELTED TANK DRESS - PINSTRIPE**

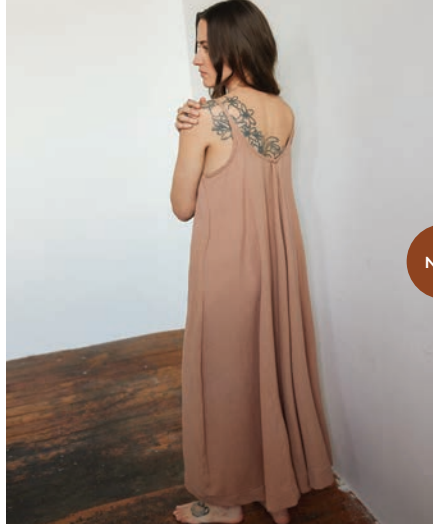
- Handwoven 100% cotton in Black/Natural Pinstripe
  - Includes belt loops for thin tie belt at waist
  - High-Low hem, pointed edges at side hem
  - Functionally cut in 4 sizes:
    - S (US size 2-4)
    - M (US size 6-8)
    - L (US size 10-12)
    - XL (US size 14-16)
- SPECIFY SIZE WHEN ORDERING**

#A-EBTDST-S/M/L/XL B/N Pinstripe 84.

Model is wearing a size Small.

MULXIPLY x EKADESMA

A capsule collection of carefully made apparel designed and produced in collaboration with Ekadesma Nepal. Each piece is carefully crafted with hand-loomed cotton, often finished with hand-stitched details and buttons carved out of coconut shells.



NEW

**FLOWY TANK DRESS - NUDE**

- Handwoven 100% cotton in Heathered Nude
- Loose, functional cut with easy swing
- High-Low hem, pointed edges at side hem
- Functionally cut in 4 sizes:

S (US size 2-4)

M (US size 6-8)

L (US size 10-12)

XL (US size 14-16)

**SPECIFY SIZE WHEN ORDERING**

#A-EFTDN-S/M/L/XL Nude 78.

Model is wearing a size Small.



NEW

**BUBBLE SLEEVE BLOUSE - GINGHAM**

- Handwoven 100% cotton in Black/Natural Gingham
- Slight crop and flair fit
- Bubble sleeves, lined with same fabric
- Functionally cut in 4 sizes:

S (US size 2-4)

M (US size 6-8)

L (US size 10-12)

XL (US size 14-16)

**SPECIFY SIZE WHEN ORDERING**

#A-EBSBG-S/M/L/XL B/N Gingham 47.

Model is wearing a size Small.



**BUBBLE SLEEVE BLOUSE - PINSTRIPE**

- Handwoven 100% cotton in Black/Natural Pintripe
- Slight crop and flair fit
- Bubble sleeves, lined with same fabric
- Functionally cut in 4 sizes:

S (US size 2-4)

M (US size 6-8)

L (US size 10-12)

XL (US size 14-16)

**SPECIFY SIZE WHEN ORDERING**

#A-EBSBS-S/M/L/XL B/N Stripe 47.

Model is wearing a size Small.

MULXIPLY x EKADESMA

A capsule collection of carefully made apparel designed and produced in collaboration with Ekadesma Nepal. Each piece is carefully crafted with hand-loomed cotton, often finished with hand-stitched details and buttons carved out of coconut shells.



NEW

**WIDE LEG PANT - PINSTRIPE**

- Handwoven 100% cotton in Black/Natural Pinstripe
- Gathered elastic waist with attached long tie belt
- Two side pockets
- Functionally cut in 4 sizes:  
S (US size 2-4)  
M (US size 6-8)  
L (US size 10-12)  
XL (US size 14-16)  
SPECIFY SIZE WHEN ORDERING

#A-EWPST-S/M/L/XL B/N Pinstripe 44.

Model is wearing a size Small.



**WIDE LEG PANT - BLACK**

- Handwoven 100% cotton in Black
- Gathered elastic waist with attached long tie belt
- Two side pockets
- Functionally cut in 4 sizes:  
S (US size 2-4)  
M (US size 6-8)  
L (US size 10-12)  
XL (US size 14-16)  
SPECIFY SIZE WHEN ORDERING

#A-EWPK-S/M/L/XL Black 44.

Model is wearing a size Small.



**BOXY SHIRT**

- Handwoven 100% cotton
- Buttondown style with coconut shell buttons
- 3/4 dollman sleeves
- Falls slightly below waist. Can be tucked.
- Functionally cut in 3 sizes:  
S (US size 2-4)  
M (US size 6-8)  
L (US size 10-14)  
SPECIFY SIZE WHEN ORDERING

#A-EBSK-S/M/L Black 39.  
#A-EBSW-S/M/L White 39.

Model is wearing a size Small.

MULXIPLY x EKADESMA

A capsule collection of carefully made apparel designed and produced in collaboration with Ekadesma Nepal. Each piece is carefully crafted with hand-loomed cotton, often finished with hand-stitched details and buttons carved out of coconut shells.



**SHIRT DRESS**

- Handwoven 100% cotton
- Coconut shell buttons from top to bottom
- High-low seam with 2 scalloped slits on the side
- Can be worn as a dress, shirt or jacket
- Functionally cut in 4 sizes:
  - S (US size 2-4)
  - M (US size 6-8)
  - L (US size 10-12)
  - XL (US size 14-16)

**SPECIFY SIZE WHEN ORDERING**

#A-ESDK-S/M/L/XL Black 72.  
#A-ESDG-S/M/L/XL Heather Grey 72.

Model is wearing a size Small.



**STITCH JACKET - BLACK + WHITE**

- Handwoven 100% cotton, fully lined in black cotton
- No Buttons
- 3/4 sleeves
- 2 side pockets
- Functionally cut in 4 sizes:
  - S (US size 2-4)
  - M (US size 6-8)
  - L (US size 10-12)
  - XL (US size 14-16)

**SPECIFY SIZE WHEN ORDERING**

#A-ESJK-S/M/L/XL Black + White 110.

Model is wearing a size Small.