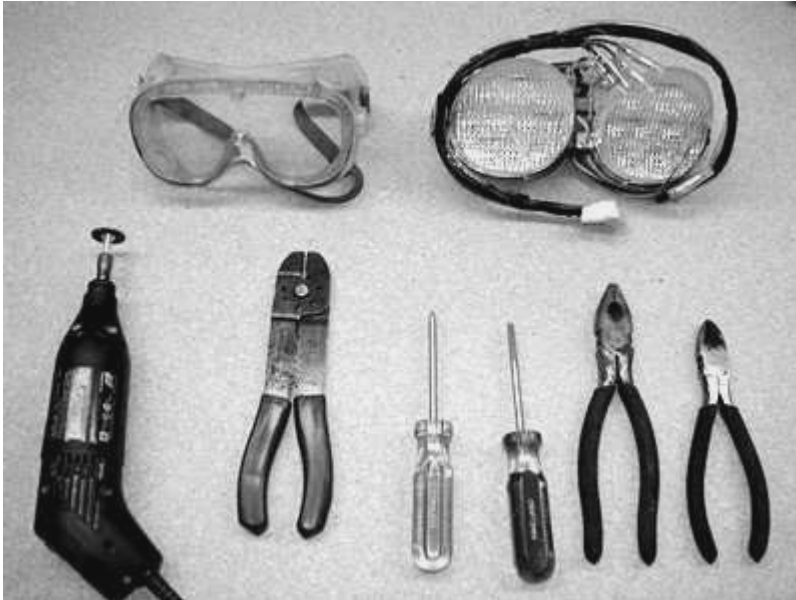


CUSTOM LED 2001 - 2002 R6 INTEGRATED TAIL KIT INSTALLATION INSTRUCTIONS

GETTING READY



ITEMS YOU WILL NEED

- 1) DREMOL WITH CUTTING WHEEL OR EQUIVALENT
- 2) PLIERS
- 3) WIRE SNIPS
- 4) FLAT HEAD SCREWDRIVER
- 5) PHILLIPS HEAD SCREWDRIVER
- 6) EYE PROTECTION
- 7) STOCK LED TAIL LIGHT REMOVED FROM BIKE
- 8) DRILL WITH 1/8" DIAMETER BIT

- 9) HOT GLUE GUN OR EQUIVALENT.

GETTING STARTED

THE STOCK LENS IS GLUED SHUT FROM THE FACTORY. IT IS RECOMMENDED THAT THE LENS IS CUT OPEN ACCORDING TO THE FOLLOWING PROCEDURE.



SEE "TIPS FOR CUTTING YOUR LENS" ON THE NEXT PAGE BEFORE BEGINNING.

- 1) POSITION YOUR CUTTING WHEEL AT THE GLUE SEAM BETWEEN THE CLEAR LENS AND THE BLACK PLASTIC HOUSING.
- 2) PROCEED TO CUT INTO THE CLEAR LENS APPROXIMATELY HALF OF THE THICKNESS, ALL THE WAY AROUND THE PERIMETER OF THE LENS – **BE SURE NOT TO CUT ALL THE WAY THROUGH BECAUSE IT WILL NOT GLUE BACK TOGETHER PROPERLY.**

TIPS FOR CUTTING YOUR LENS



- A) KEEP THE CUTTING WHEEL MOVING AND APPLY LIGHT PRESSURE. SITTING IN ONE SPOT WILL JUST MELT THE PLASTIC.
- B) TRY TO STAY TIGHT AGAINST THE EDGE WHERE THE CLEAR LENS AND THE BLACK BACKING MEET INSIDE. NOTE FROM THE PICTURE THAT THE CORRECT CUTTING LOCATION LEAVES CLEAR PLASTIC ON **BOTH** SIDES OF THE CUT.
- C) DO NOT TRY TO CUT THE LENS WHERE THE MOUNTING TABS INTERSECT WITH THE HOUSING (TWO SIDES OF THE LENS WHERE IT BOLTS TO THE MOTORCYCLE) – SKIP THIS PART, THE LENS WILL OPEN ANYWAY.

WHEN YOU MAKE YOUR WAY AROUND THE ENTIRE PERIMETER, CLEAN ALL THE BURRED PLASTIC FROM AROUND THE EDGES AND FROM INSIDE THE GROOVE YOU'VE MADE.

OPENING THE LENS

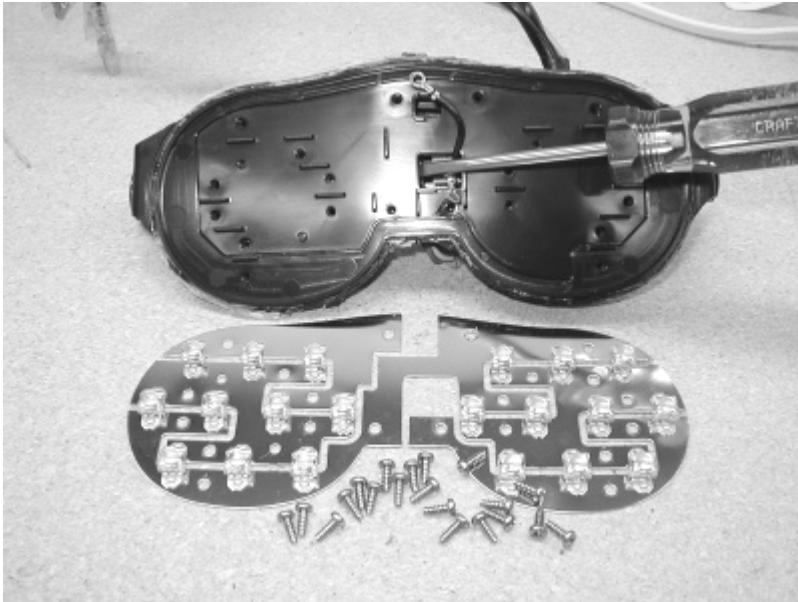


- 3) PLACE THE TIP OF A FLAT HEAD SCREWDRIVER IN THE GROOVE YOU HAVE CREATED.
- 4) GENTLY TWIST THE SCREWDRIVER TO CRACK THE GLUE ALONG THE GROOVE.

NOTE: AS SOON AS YOU HEAR THE SOUND OF THE GLUE GIVING (A CRACK), MOVE THE SCREWDRIVER SLIGHTLY AND ADVANCE THE CRACK. SLOW AND STEADY IS THE NAME OF THE GAME HERE. IF YOU FIND A HARD SPOT, WEAKEN IT WITH THE CUTTING WHEEL AS NECESSARY.



HURRAY! THE HARD PART IS OVER, RELAX!



5) REMOVE THE PHILLIPS SCREWS HOLDING THE STOCK LED BOARD TO THE HOUSING.

6) PRY OUT THE PLASTIC COVER AS SHOWN TO REVEAL THE CIRCUITRY BENEATH.

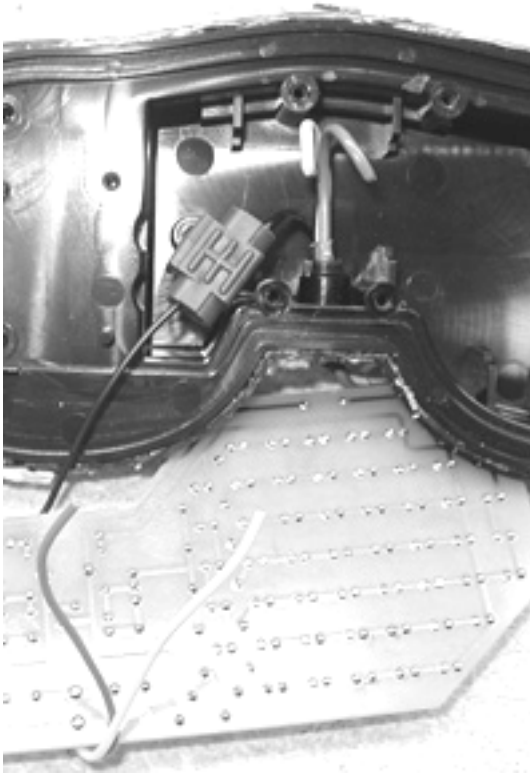


7) REMOVE THE TWO SCREWS THAT HOLD THE STOCK CIRCUIT BOARD IN.

8) SNIP OFF THE THREE WIRES THAT CONNECT TO THE STOCK CIRCUIT BOARD AS SHOWN - AS CLOSE TO THE CIRCUIT BOARD AS POSSIBLE (BLACK, YELLOW AND BLUE WIRES)

YOU WILL NO LONGER NEED THE STOCK LEDs AND CIRCUIT BOARD, DISPOSE OF THEM AS YOU WISH.

WIRING UP YOUR CUSTOM LED BOARD

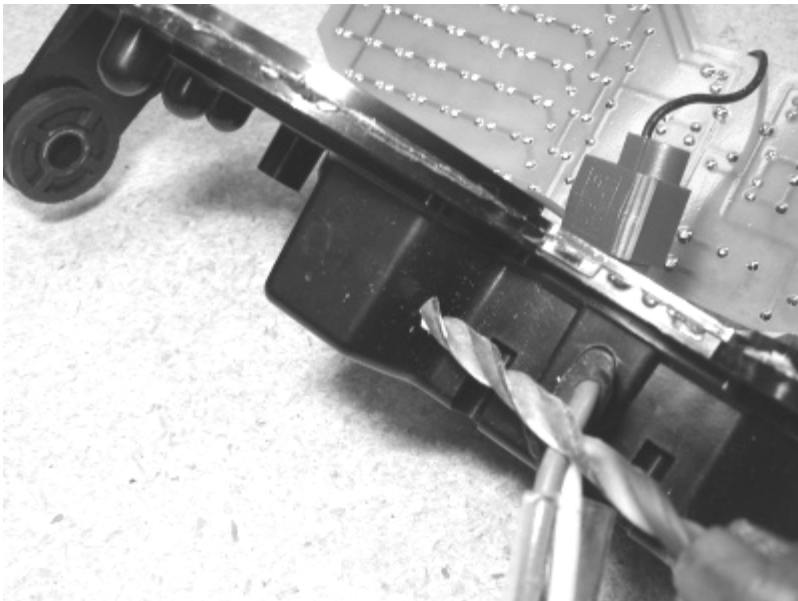


9) PLACE YOUR CUSTOM LED BOARD FACE DOWN EXACTLY AS SHOWN IN THE PICTURE. THIS IS IMPORTANT AS IT ENSURES THAT THE WIRES WONT GET TANGLED OR IMPROPERLY PLACED. (NOTE: CIRCUIT BOARD DESIGN MAY HAVE CHANGED FROM WHAT'S SHOWN IN THE PICTURES).

10) MATCH THE WIRE COLORS AS FOLLOWS:

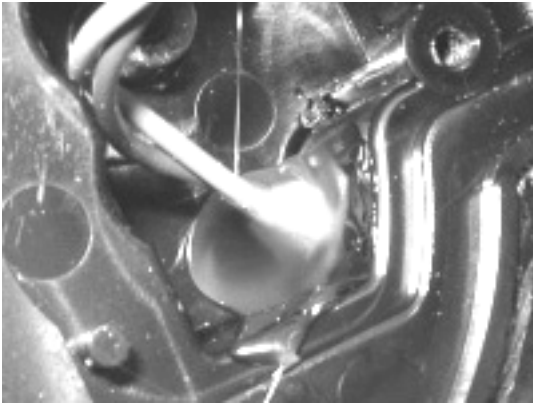
- **BLACK ON HARNESS TO 5" BLACK ON CUSTOM LED BOARD**
- **YELLOW ON HARNESS TO 5" YELLOW ON CUSTOM LED BOARD**
- **BLUE ON HARNESS TO 5" BLUE ON CUSTOM LED BOARD**

USE THE THREE (3) SUPPLIED RED SPLICE CONNECTORS. INSERT THE WIRES YOU WANT TO SPLICE TOGETHER INTO OPPOSITE ENDS OF THE RED SPLICE CONNECTOR. THE WIRES SHOULD EXTEND ALMOST ALL THE WAY TO THE OTHER SIDE OF THE CONNECTOR FOR BEST RESULTS. **BE SURE TO MAKE SURE THAT THE SPLICE WILL OCCUR AS PLANNED BY VISUALLY INSPECTING THE WIRE PLACEMENT BEFORE SQUEEZING THE CONNECTOR WITH YOUR PLIERS.**



11) DRILL A HOLE USING A 1/8" BIT EXACTLY AS SHOWN IN THE PICTURE. THIS HOLE WILL BE USED TO ROUTE THE GREEN AND BROWN WIRES OUT OF THE HOUSING.

12) RUN THE BROWN AND GREEN WIRES THROUGH THIS HOLE.

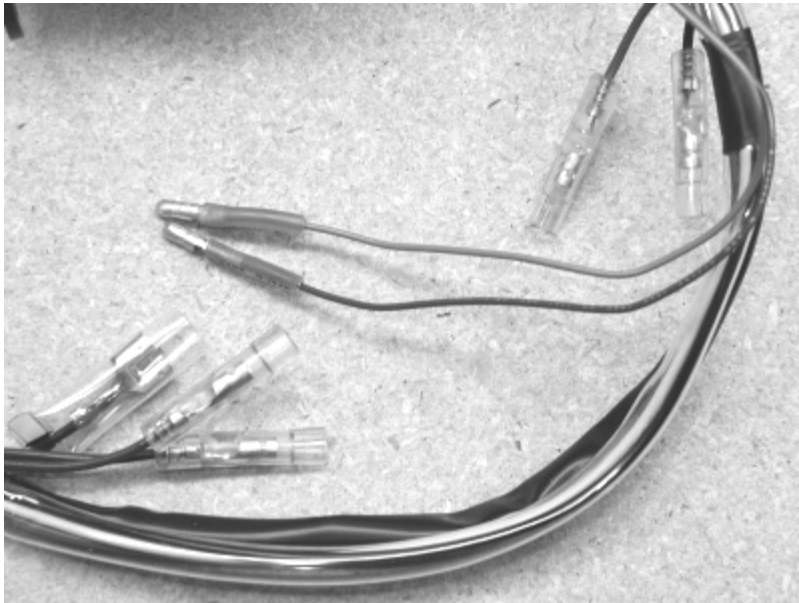


13) PLACE A GLOB OF HOT GLUE OR OTHER SEALANT INSIDE THE HOUSING WHERE THE BROWN AND GREEN BLINKER WIRES PENETRATE THE HOLE YOU DRILLED IN THE HOUSING. BE SURE THERE IS ENOUGH SLACK INSIDE TO PROPERLY MOUNT THE CUSTOM LED BOARD.

MOUNTING YOUR CUSTOM LED BOARD

14) USE THE TWO SCREWS PROVIDED TO MOUNT YOUR CUSTOM LED BOARD TO YOUR LENS HOUSING. YOU'LL SEE THE TWO MOUNTING HOLES IN THE LOWER CORNERS OF THE CUSTOM LED BOARD. **DO NOT OVER TIGHTEN THE SCREWS AS IT MAY CRACK THE BOARD! ALL YOU NEED IS SNUG.**

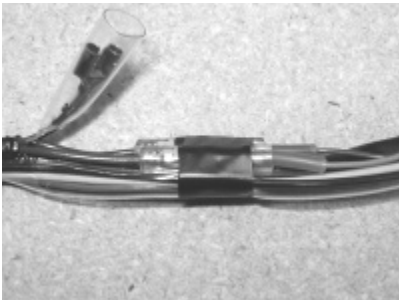
15) IT IS RECOMMENDED THAT YOU PLACE A SMALL GLOB OF HOT GLUE OR SEALANT AT THE TOP OF THE CUSTOM LED BOARD (OPPOSITE THE SIDE WITH THE TWO SCREWS) BETWEEN THE CUSTOM LED BOARD AND THE HOUSING. THIS WILL HELP DAMPEN VIBRATIONS ON THE BOARD.



16) RUN THE NEW BROWN AND GREEN WIRES COMING FROM THE HOUSING ALONG SIDE THE HARNESS. CUT THEM TO LENGTH SO THAT THEY CAN NEATLY PLUG INTO THE STOCK BLINKER BULLET SOCKETS. THESE WIRES ARE BROWN AND GREEN AS WELL.

17) USE THE SUPPLIED HEAT SHRINKABLE BULLET CONNECTORS. BE SURE TO HEAT SHRINK THE CONNECTOR AFTER CRIMPING IT FOR A TROUBLE FREE INSTALL.

18) MATCH THE WIRE COLORS UP AND PLUG THEM IN.



• **BROWN WIRE ON HARNESS TO BROWN WIRE ON CUSTOM LED BOARD**

• **GREEN WIRE ON HARNESS TO GREEN WIRE ON CUSTOM LED BOARD**

19) SECURE THE CONNECTION WITH TAPE AS SHOWN.

PREPARING YOUR LENS



BECAUSE OF THE CHARACTERISTICS OF THE STOCK LEDs, AND THE WAY THE STOCK LEDs ARE SITUATED, A CULMINATION LENS WAS INCORPORATED INSIDE THE STOCK LENS. FOR BEST RESULTS WITH YOUR CUSTOM LED TAIL, IT IS HIGHLY RECOMMENDED THAT YOU REMOVE THIS CULMINATION LENS.

THERE ARE SEVERAL WAYS REMOVE THIS LENS.

A) DRILL A SMALL HOLE IN THE MIDDLE OF THE LENS, INSERT A HOOK SHAPED OBJECT AND PULL THE LENS OUT

- OR -

B) SMASH THE LENS CAREFULLY WITH A METAL OBJECT SUCH AS A WIRESTRIPPER AS SHOWN IN THE PICTURE.



ONCE STRUCK WITH ENOUGH FORCE, THE CULMINATION LENS WILL CRACK TO PIECES, AND CAN BE EASILY PULLED OUT OF THE STOCK LENS.

RESEALING YOUR LENS

CONGRATULATIONS! YOU'RE ONE STEP AWAY FROM FULFILLING YOUR WILDEST DREAMS – OK, MAYBE NOT, BUT YOU'RE ALMOST DONE WITH YOUR CUSTOM LED R6 TAIL!

IT IS SUGGESTED AT THIS POINT THAT YOU PLUG IN THE TAIL LIGHT TO VERIFY THAT THE WIRING IS DONE CORRECTLY BEFORE RESEALING THE LENS. THE RUNNING LIGHT, BRAKE LIGHT, AND BLINKERS SHOULD WORK PROPERLY.

20) RESEAL YOUR LENS USING CRAZY GLUE OR GLUE OF YOUR CHOICE. BE SURE TO ALLOW PROPER TIME TO SET BEFORE DOING ANY MORE WORK TO THE LENS.

21) IT IS RECOMMENDED THAT YOU RUN A BEAD OF HOT GLUE OR SEALANT AROUND THE PERIMETER OF THE LENS WHERE YOU MADE YOUR CUT WITH THE DREMOL. THIS WILL MAKE THE LENS TOTALLY WATERPROOF AGAIN. BE SURE TO DO THIS STEP AFTER YOU HAVE ALLOWED TIME FOR THE GLUE TO SET PROPERLY.

ENJOY!

DISCLAIMER

BY SELLING YOU THIS PRODUCT, WE MAKE NO GUARANTEE THAT THE USE OF THIS PRODUCT CAN OR WILL HELP REDUCE THE CHANCE OF ACCIDENTS IN ANY WAY, NOR ARE WE LIABLE AS SUCH.

FURTHERMORE, IT IS YOUR RESPONSIBILITY TO FOLLOW THE LAWS OF YOUR LOCAL JURISDICTIONS AS FAR AS D.O.T. REQUIREMENTS GO FOR MARKER LIGHT AND BLINKER LIGHT SHAPE, COLOR AND INTENSITY.

THESE UNITS ARE SOLD "FOR NOVELTY ONLY."