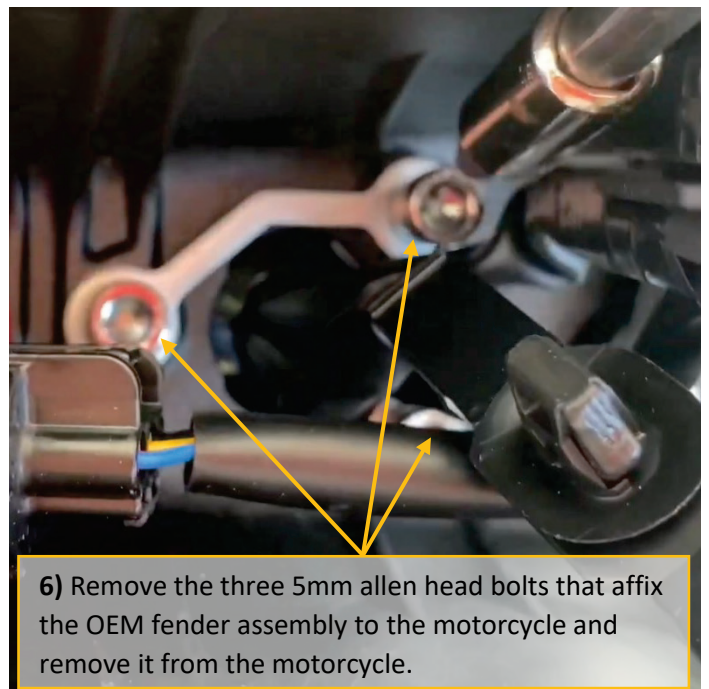
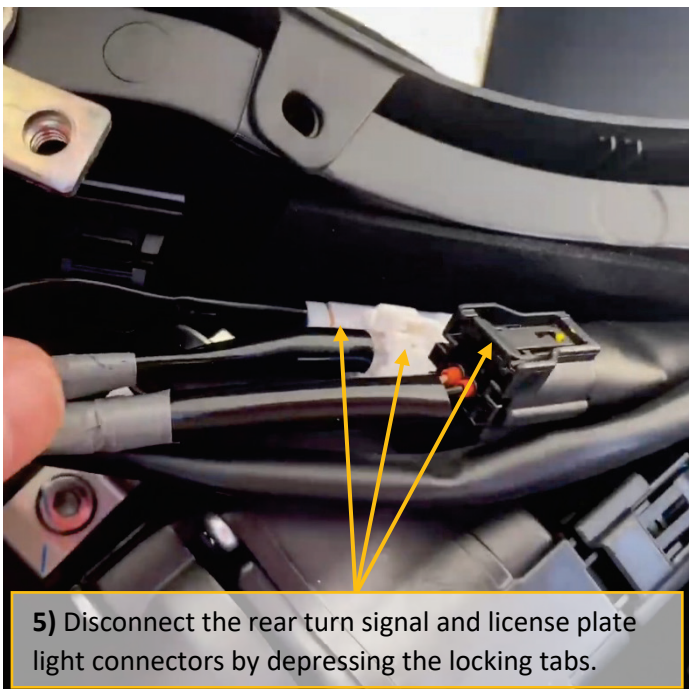
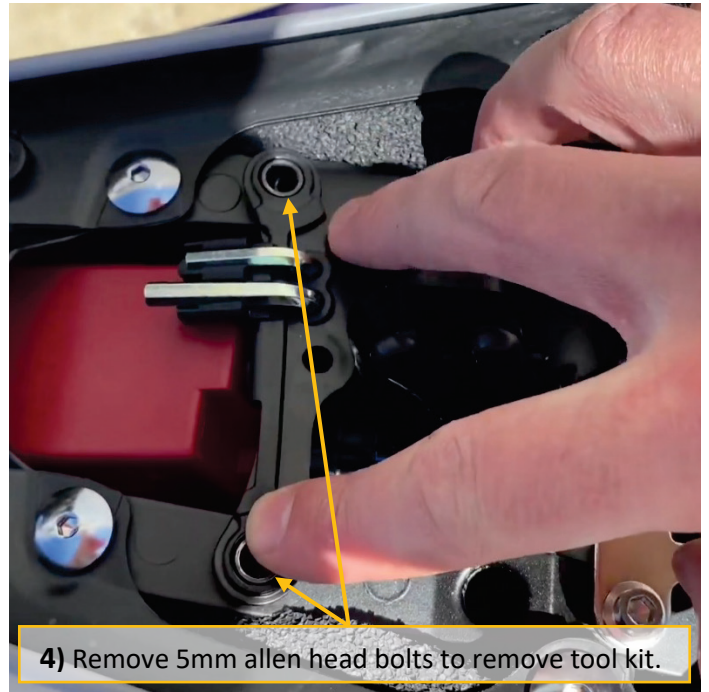
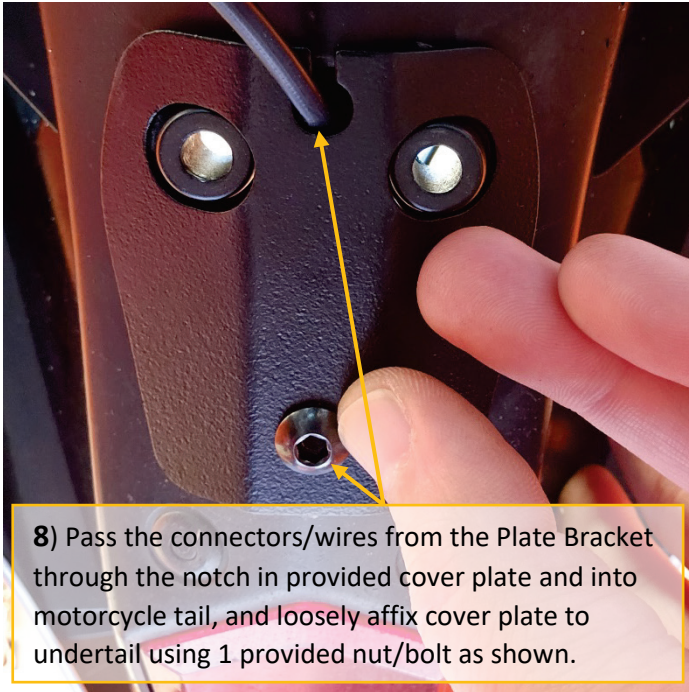


## 2015+ Yamaha YZF-R1 Ultimate Stealth License Plate Bracket Illustrated Installation Instructions

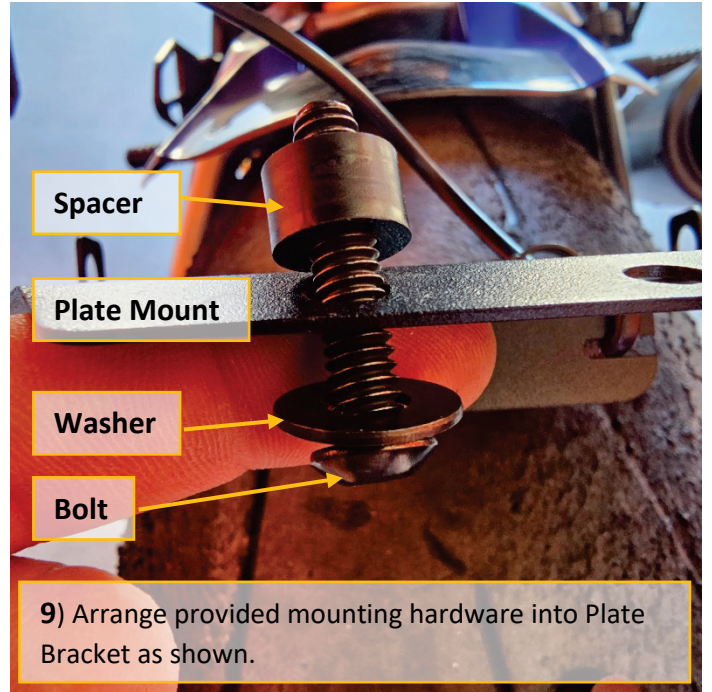
- 1) Secure motorcycle and prepare to remove the OEM fender assembly.
- 2) Remove the passenger seat and the riders seat.



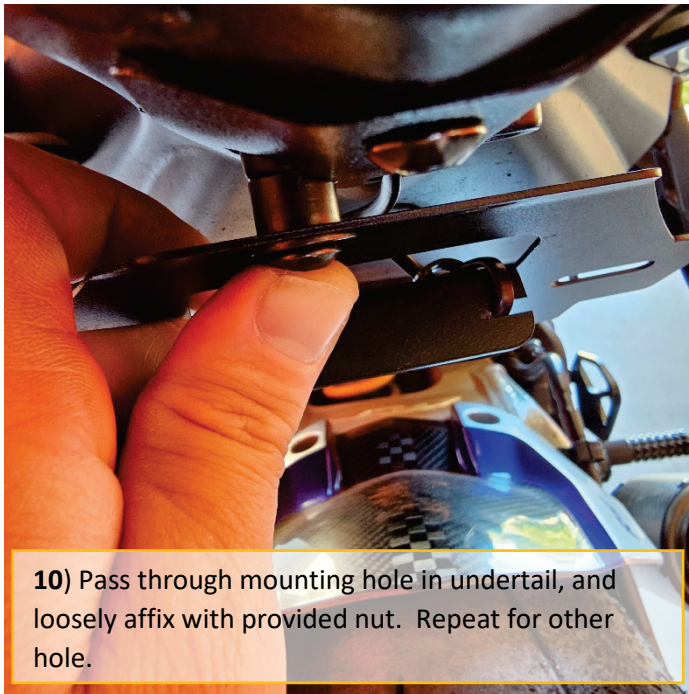
- 7) If applicable, attach aftermarket turn signals to the Ultimate Stealth Plate Bracket at this time.



8) Pass the connectors/wires from the Plate Bracket through the notch in provided cover plate and into motorcycle tail, and loosely affix cover plate to undertail using 1 provided nut/bolt as shown.



9) Arrange provided mounting hardware into Plate Bracket as shown.



10) Pass through mounting hole in undertail, and loosely affix with provided nut. Repeat for other hole.



11) Tighten down the three bolts (cover plate, and two bolts holding plate bracket – don't overtighten).

12) Connect the license plate light connector, and turn signal connectors if applicable.

13) Reinstall toolbox, plastic cover, passenger seat, and rider seat.

**Thank you** for choosing Custom LED, and supporting USA manufacturing. Please help spread the word! You can share Video of this product in action on **YouTube**, and share your pre and post-install pictures on **Instagram**. Be sure to tag us **@Custom\_LED\_LLC** in the pictures so they will appear on our website Instagram feed!