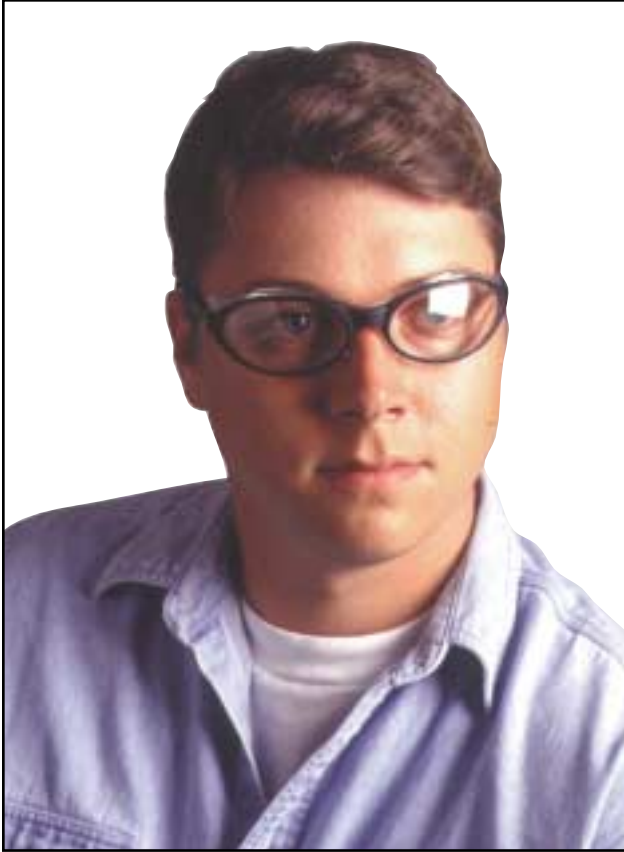


Safety Eyewear - Sport



Sport Style Safety Glasses



Horizon™ These safety glasses feature upper and lower shields for total wrap around protection. Adjustable at the temple for a comfortable, custom fit. 99.9% UV protective, available in anti-fog, scratch resistant lenses. **ANSI Z87.1**

Prospect™ The front lens is a single piece of impact resistant, molded polycarbonate that curves to fit the eye area. Adjustable at the temple for a comfortable, custom fit. 99.9% UV protective, available in anti-fog, scratch resistant lenses. **ANSI Z87.1**

Infinity™ Similar to the Prospect™ with a stylish v-cut at the temple. **ANSI Z87.1-1989**

Richocet™
This cross between a safety glass and goggle offers sleek, versatile protection. The flexible frame is foam padded to conform snugly to the eye area. Direct ventilation through side holes improves air circulation and reduces fogging. The wide adjustable band secures the goggle during any activity. 99.9% UV protective, available in anti-fog, scratch resistant lenses. **ANSI Z87.1**

Applications: Construction, machining, milling, industrial, laboratory and similar industries requiring eye protection from particulates and splash.

Features and Benefits

Lenses

- Strong Polycarbonate
- Anti-fog
- Scratch Resistant
- 99.9% UV Protective
- Optically Correct

Frames

- Lightweight
- Durable
- Versatile Fit

ANSI Standards

ANSI Standard Z87.1-1989 details strict requirements for impact and penetration resistance. Rigorous testing includes a high mass impact test and high velocity impact test for spectacles, goggles, faceshields and welding helmets. All eyewear shown on this page meet the ANSI standard.

Safety Eyewear - Sport



Horizon™

| Product No. | Description | Frame Color | Packaging |
|-------------|-------------|-------------|-----------------------------|
| SAP2000 | Clear Lens | Black | 1 dozen/pack, 25 packs/case |



Prospect™

| Product No. | Description | Frame Color | Packaging |
|-------------|---------------|----------------|-----------------------------|
| SAP2200-C | Clear Lens | Black (temple) | 1 dozen/pack, 25 packs/case |
| SAP2200-M | Mirrored Lens | Black (temple) | 1 dozen/pack, 25 packs/case |



Infinity™

| Product No. | Description | Frame Color | Packaging |
|-------------|-------------|-------------|-----------------------------|
| SAP2300-C | Clear Lens | Black | 1 dozen/pack, 25 packs/case |
| SAP2300-Y | Yellow Lens | Black | 1 dozen/pack, 25 packs/case |



Richocet™

| Product No. | Description | Frame Color | Packaging |
|-------------|-------------|-------------|-----------------------------|
| SAP2100-B | Clear Lens | Black | 1 dozen/pack, 25 packs/case |
| SAP2100-S | Clear Lens | Silver | 1 dozen/pack, 25 packs/case |

Keep safety glasses within reach with Nylon Cords

| Product No. | Description | Colors | Packaging |
|-------------|-------------|-------------------------|-----------------|
| SAP900 | Nylon Cords | Black, Blue, Green, Red | 1 dozen per bag |



Additional **Qvis**™ Styles Include:

| | |
|------------------------------|-----------------------------------------------|
| Traditional | Defender™ Sentinel™ Squire™ |
| Classics | Pilot™ Mariner™ Navigator™ Explorer™ |
| Goggles | Flex™ Expo™ |
| Visitors & Impact | Lucent™ Force™ |

Distributed By: