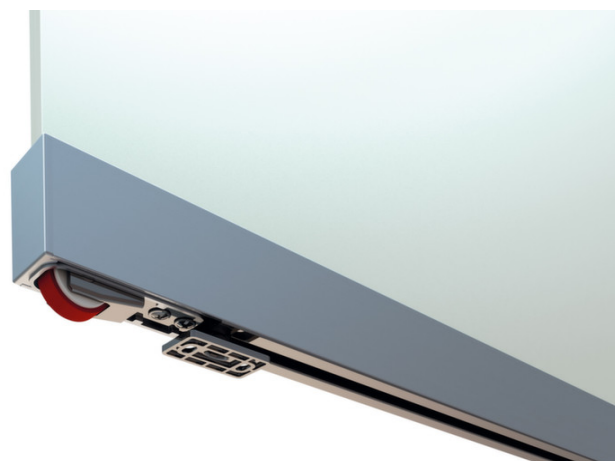
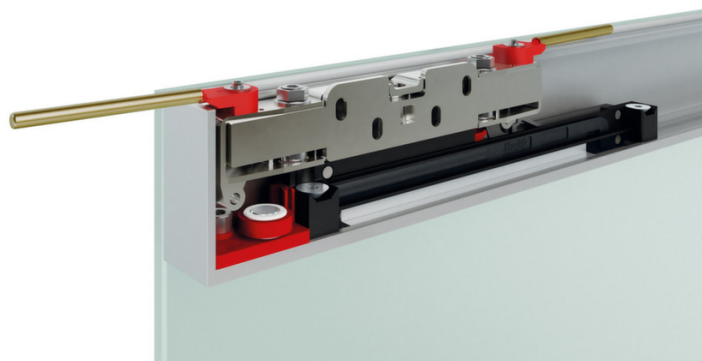






## Magic2 Vetro


Magic2 Vetro is the new PATENTED and INVISIBLE sliding door system outside the wall with soft-closing.



 680 ÷ 1800 mm

 80 kg

 10 mm

 Dual shock absorbing stop

## Magic2 Vetro

Magic2 Vetro is INNOVATIVE and PATENTED system that represents evolution of Magic.

The system might be fixed with exposed studs or bundle and it is suitable to monolithic or laminated glasses, from 8 up to 12,7 mm of thickness.

**Over 50 mm of braking distance**

Uses new PATENTED dampers, for a total braking of 50 mm, increasing the soft closing motion of 20mm more than previous version, keeping the same widths of door.

**New adjustable stoppers**

The new adjustable dampers are no more connected to the spacer or end caps. is now possible to adjust the damper position when required.

**New position for spacer wheels**

The Magic2 system incorporates new spacer wheels, placed at the end of the door, to better protect the door from any contact with the wall.

**New PATENTED system for any type of adjustment**

The new Magic2 slider system incorporates a PATENTED® micrometric adjustment system, wich allows any type of vertical and horizontal adjustment: to compensate the possible wall irregularities. These operations are possible also without remove the door from the slide as it was in previous model.

**Practical unblocking system**

The Magic2 system is equipped with two new anti unhooking elements. In these new elements, two safety rods have been inserted, they are used to easily rotate the anti unhookings without any other tool.

**Silent lower guide**

In order to increase the smoothness of motion, the Magic2 system is equipped with metallic lower guide made in zama. to better increase sliding silence Magic2 also includes a plastic profile in the bottom of the door.

**Patented lower wheels for better smoothness**

The new lower wheels of Magic2 have PATENTED suspensions, and have been designed with larger diameter, larger bearings and bigger pivots. The rubber on wheels has been doubled to make them stronger and smoother.

The new lower wheels of Magic2 are equipped with new spring PATENTED system.

Magic2 system integrates two fixed springs that works up to 40kg door weight. For doors weight higher than 40kg, up to maximum 80kg, new wheels will flex more and hit the new rubber cylinder that act as an additional cushion to the two springs.

