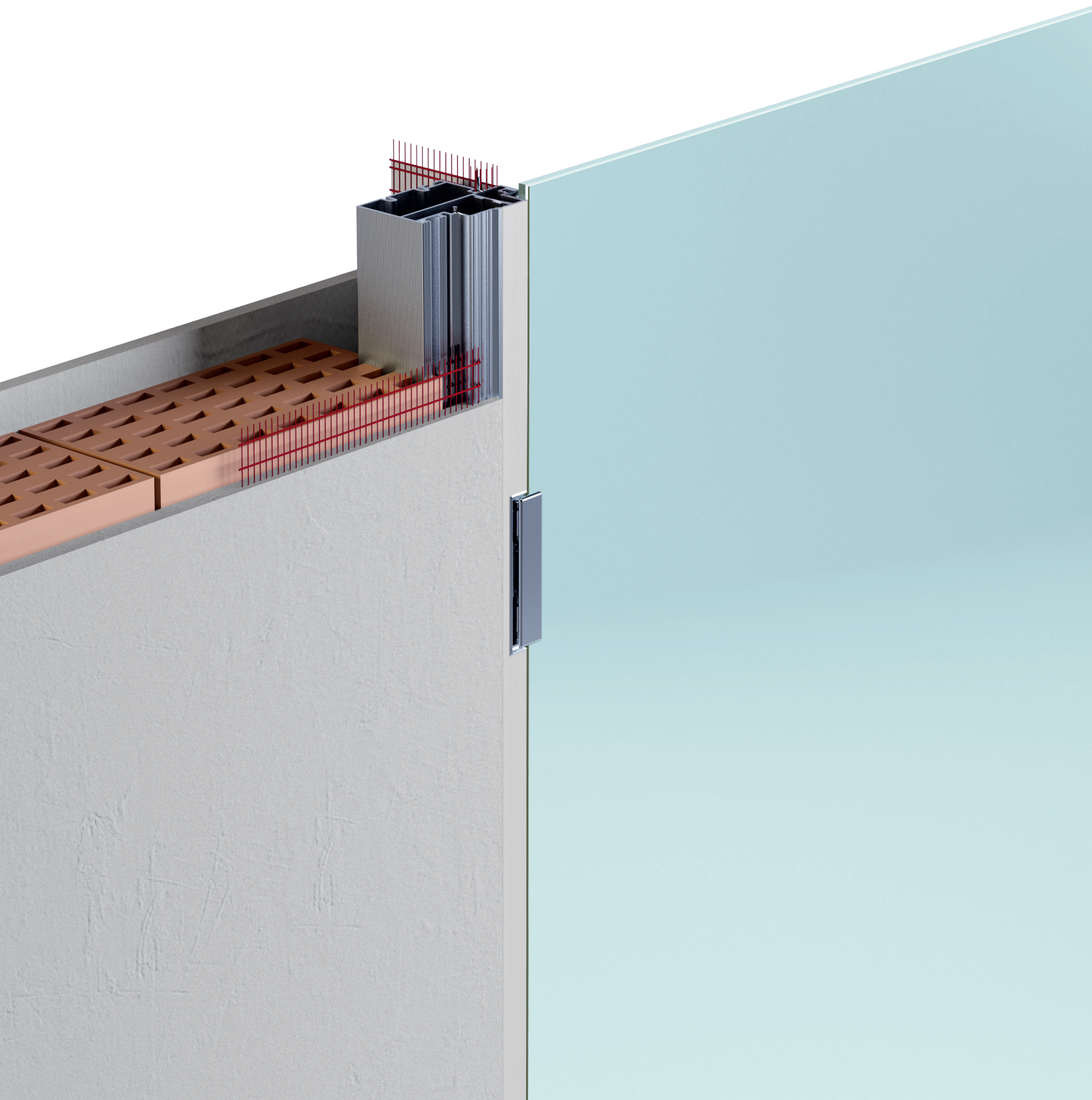


Fusion Glass

Flush swing glass door system



Fusion Glass

Fusion Glass is the new flush swing glass door system. The usage of best components allows a **quick and easy installation**.




A new versatile system, for a unique design

Fusion Glass flush swing system is used with **glass doors** from **5/16"÷ 3/8" (8 ÷10 mm) thickness**.

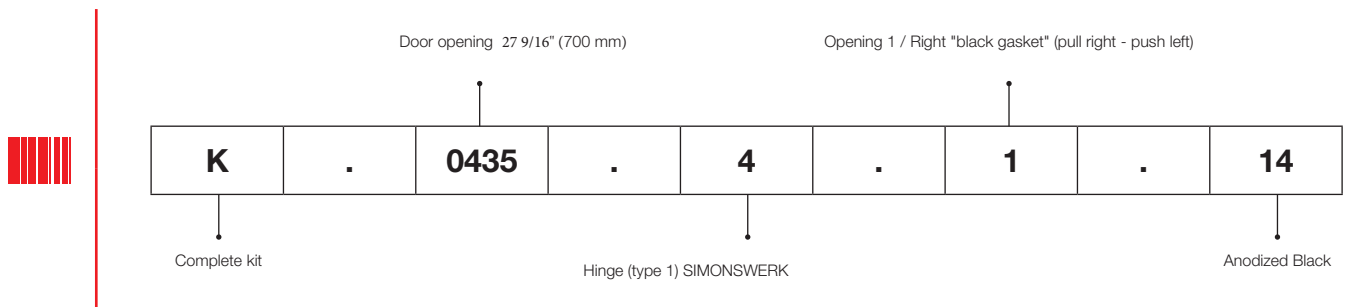
It's possible to supply frames dedicated to standard door sizes.


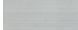
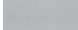
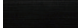
Alternatively, it's possible to realize frames according to special sizes requirements, providing information of height, width and quantity of hinges to use.

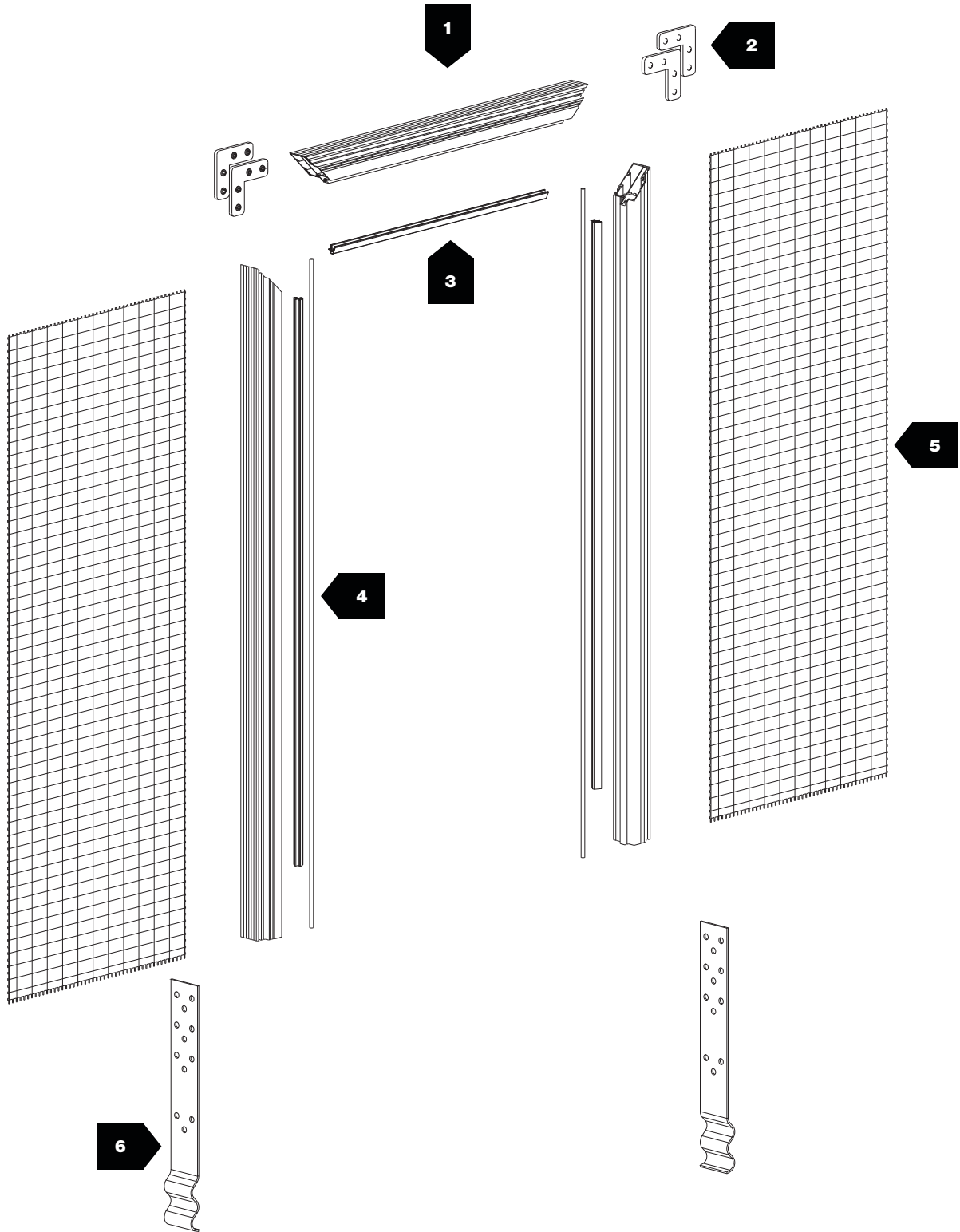


Fusion		COMPLETE BOX KIT			
K	Complete kit				
	0435	Door opening 27 9/16" (700 mm)			
	0436	Door opening 31 1/2" (800 mm)			
	0437	Door opening 35 7/16" (900 mm)			
	0438	Door opening 39 3/8" (1000 mm)			
	4	Hinge (type 1) SIMONSWERK			
	1	Opening 1 / Right "black gasket" (pull right - push left)			
	2	Opening 2 / Left "black gasket" (pull left - push right)			
	3	Opening 1 / Right "white gasket" (pull right - push left)			
	4	Opening 2 / Left "white gasket" (pull left - push right)			
	01	Anodized Silver			
	14	Anodized Black			

EXAMPLE







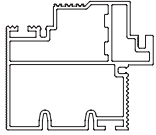
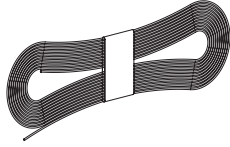
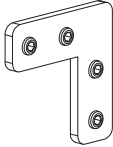
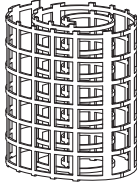


Tracks		ALUMINUM FINISHES CODES			
CODE		FINISH COLOR			
8 00 0.0		00 G	Row - Mill Finish		
8 01 0.0		01 A	Anodized Silver		
8 14 0.0		14 N	Anodized Black		
			STANDARD		



5/16" ÷ 3/8" (8 ÷ 10 mm)



176 lbs (80 kg)

N°					N°				
1	<p>2901</p> <p>8 00 0.02901</p> <p>8 01 0.02901</p> <p>8 14 0.02901</p>		—		4	2910		—	
2	446		—		5	2907		—	
3	2905		—		6	2908		—	

Fusion Glass

Flush swing glass door system



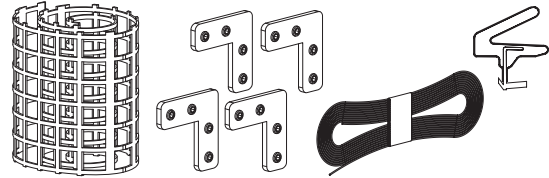
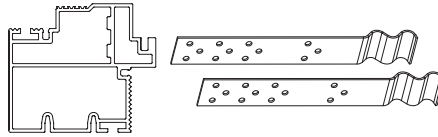
176 lbs (80 kg)

.01

Anodized Silver

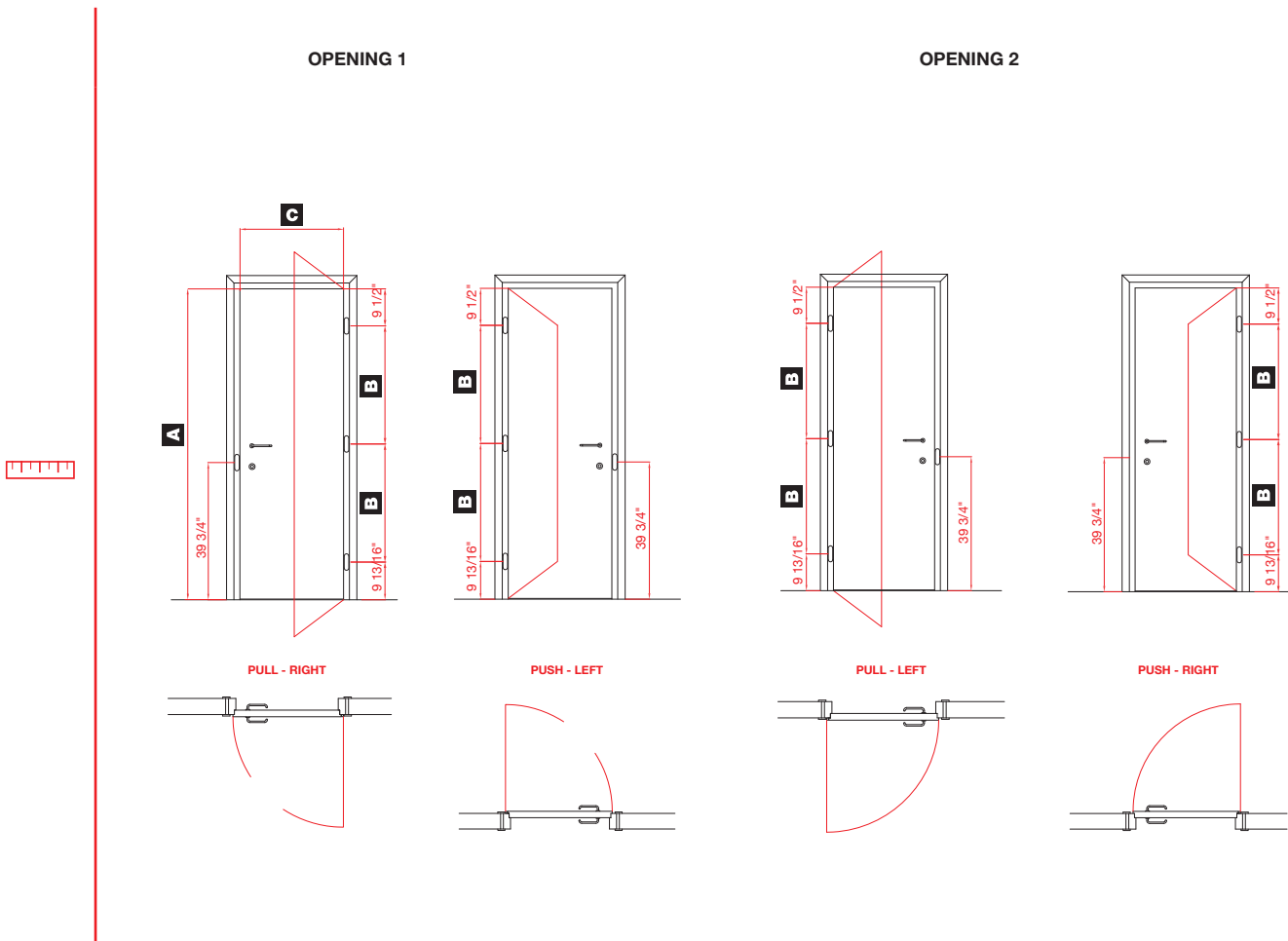
.14

Anodized Black

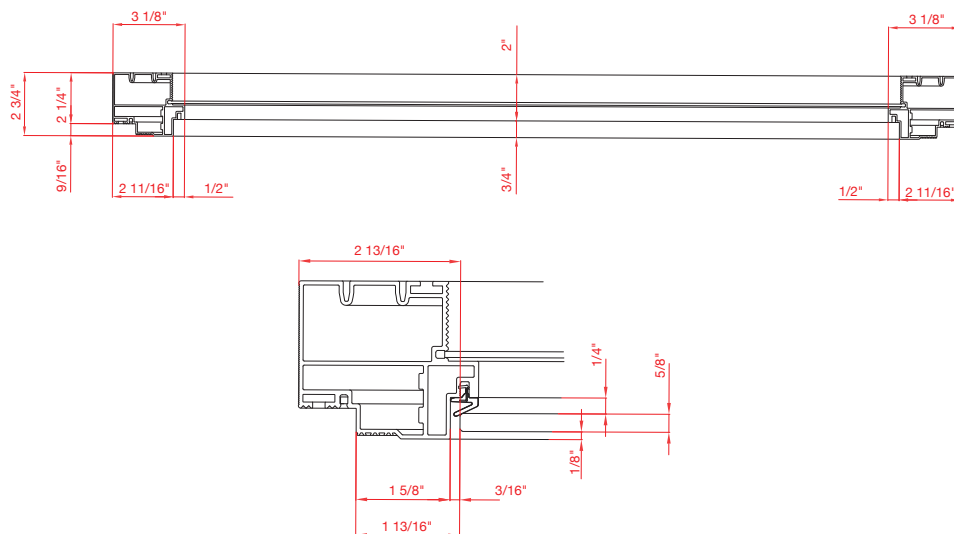


KIT		MEASUREMENTS				
		GASKET	A	B	C	
OPENING 1	K.0435.4.1.14	Black	82 11/16" 2100 mm	31 1/8"	27 9/16"	1x
	K.0436.4.1.14				31 1/2"	1x
	K.0437.4.1.14				35 7/16"	1x
	K.0438.4.1.14				39 3/8"	1x
	K.0435.4.3.01	White			27 9/16"	1x
	K.0436.4.3.01				31 1/2"	1x
	K.0437.4.3.01				35 7/16"	1x
	K.0438.4.3.01				39 3/8"	1x
OPENING 2	K.0435.4.2.14	Black	82 11/16" 2100 mm	31 1/8"	27 9/16"	1x
	K.0436.4.2.14				31 1/2"	1x
	K.0437.4.2.14				35 7/16"	1x
	K.0438.4.2.14				39 3/8"	1x
	K.0435.4.4.01	White			27 9/16"	1x
	K.0436.4.4.01				31 1/2"	1x
	K.0437.4.4.01				35 7/16"	1x
	K.0438.4.4.01				39 3/8"	1x

MEASUREMENTS DESCRIPTION



MEASUREMENTS DESCRIPTION



HINGES



DOOR-CATCHER

MAGNETIC PLATE
KC 25/G LOOK
CLOSING MAGNET
KC 25 LOOK

SIMONSWERK

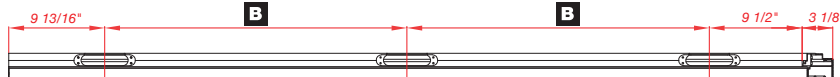


MAGNETIC PLATE
KC 50/G
CLOSING MAGNET
KC 50

STANDARD

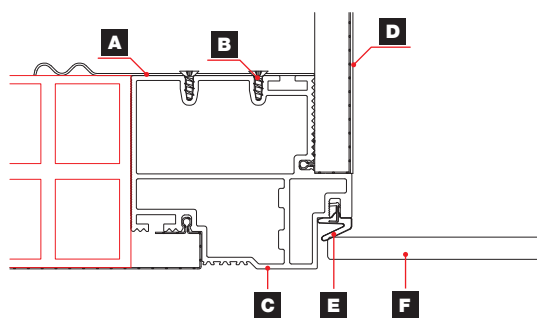
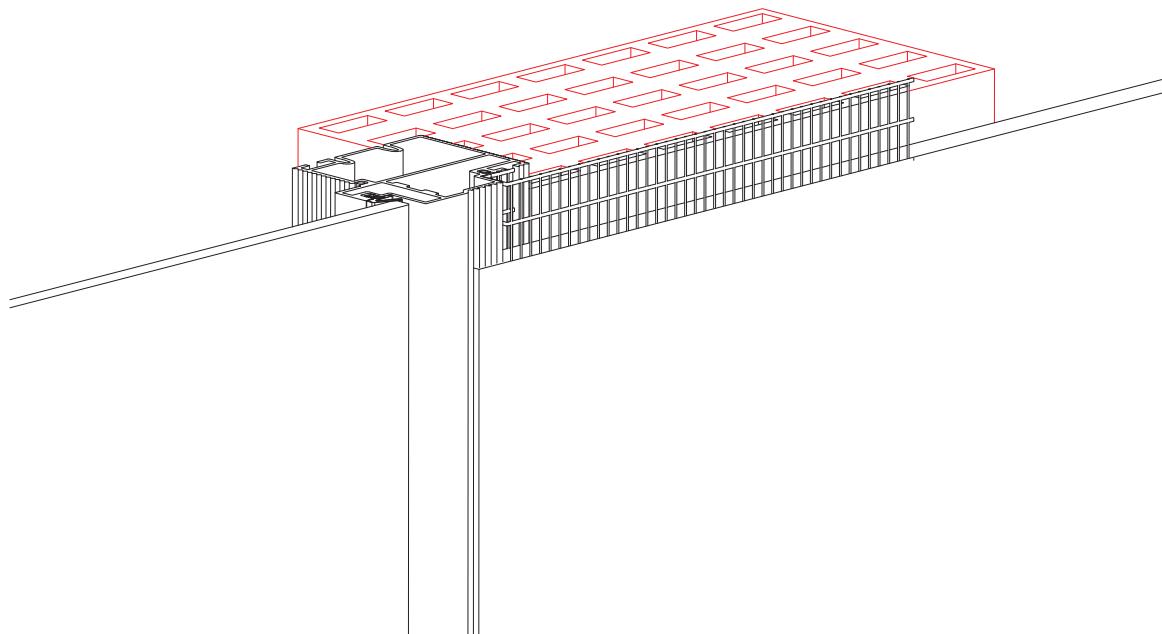
HINGE SYSTEM
TECTUS TEG 310 2D 60

SIMONSWERK

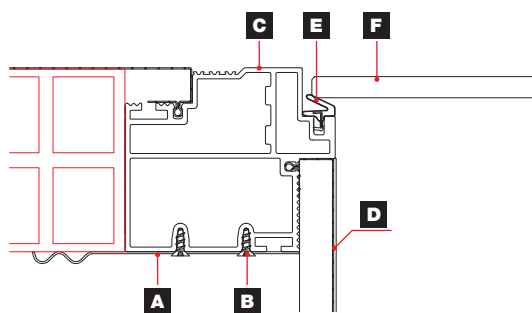


HINGE SYSTEM
TECTUS TEG 310 2D 80

MASONRY APPLICATION



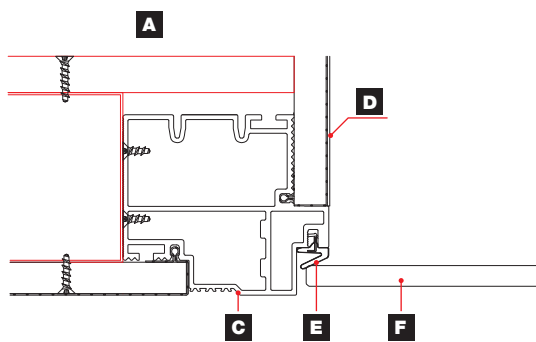
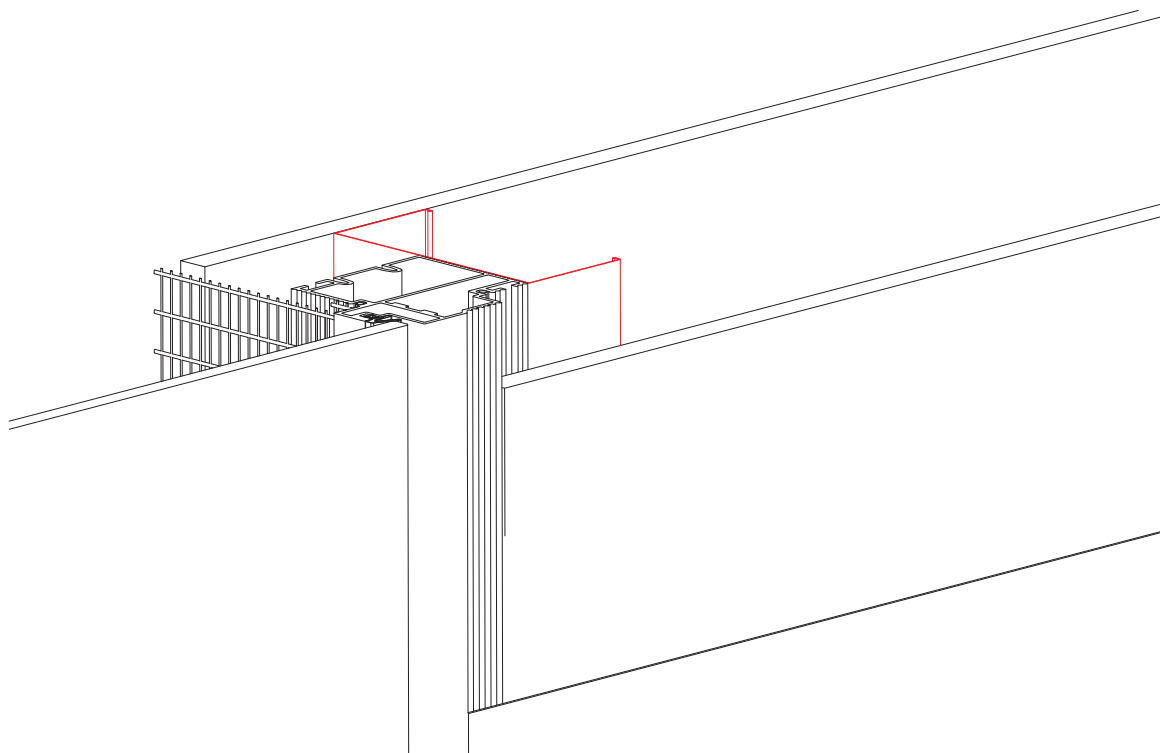
PUSHING OPENING



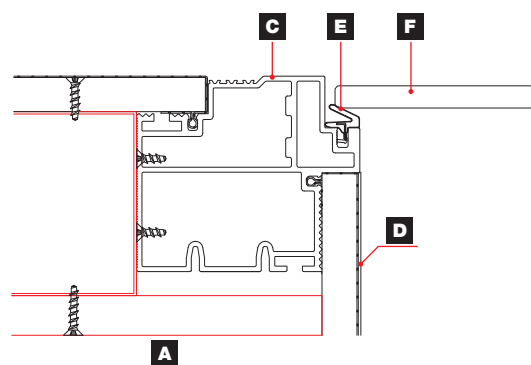
PULLING OPENING

A	ART. 2908
B	SCREW / VITE
C	ART. 2901
D	ART. 2907
E	ART. 2905
F	DOOR / ANTA

PLASTERBOARD APPLICATION



PUSHING OPENING



PULLING OPENING

A	ART. 2908
B	SCREW
C	ART. 2901
D	ART. 2907
E	ART. 2905
F	DOOR



Milcasa Store

www.milcasastore.com
support@milcasastore.com

(888) MILCASA
(888) 645-2272