

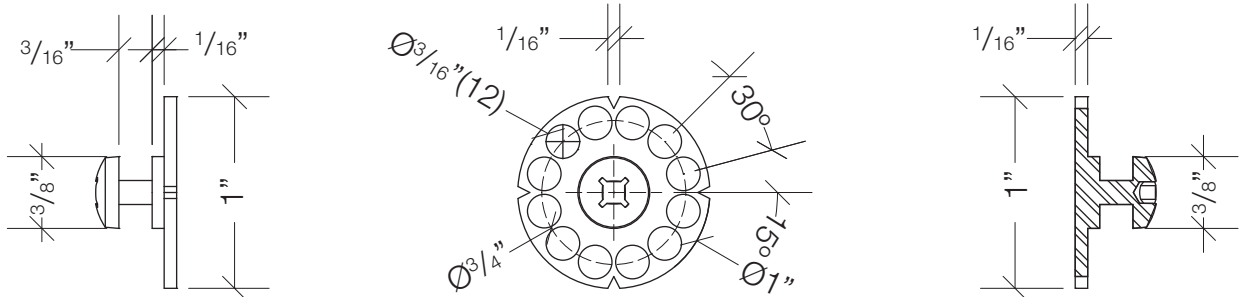
Star Hanger systems

"Your Innovative
Panel Hanging Partner"



Star Solid Surface Epoxy Mount

PRODUCT SPECIFICATIONS



PRODUCT DESCRIPTION

THE STAR SOLID SURFACE EPOXY MOUNT IS DESIGNED TO INSTALL MATERIALS TOO BRITTLE TO HOLD A SCREW INCLUDING THIN PANELS, CORIAN, MF, SCULPTED PANELS, ACRYLICS, AND SOLID SURFACES. THE PERFORATED, MILD-STEEL MOUNTING PLATE CAN BE EPOXY-MOUNTED TO ALMOST SURFACE WITH HIGH STRENGTH AND PREDICTABILITY. THE SMALL HOLES PROVIDE MECHANICAL ADHESION IN ADDITION TO EPOXY. THE EPOXY MOUNT USES THE STAR HANGER AND LOCK TO MECHANICALLY FASTEN PANELS TO THE WALL, AND THE DOUBLE-HEADED SCREW HAS BEEN MODIFIED TO ATTACH THE PANEL WITH A GENERAL-PURPOSE EPOXY. THE STAR HANGER ALIGNMENT PIN IS USED TO MARK THE LOCATION ON THE PANEL. PUSH THE STEEL PLATE INTO PLACE, AND WIPE OFF ANY EXCESS GLUE. THE EPOXY MOUNT CAN BE USED FOR SOLID SURFACES AND MDF. THEY ARE ESPECIALLY USEFUL FOR THIN MDF AND ACRYLIC WHEN THERE IS CONCERN ABOUT THE STAR HANGER SCREW PIERCING THE SURFACE.

PRODUCT USES

WHEN USED IN COMBINATION WITH THE EPOXY-MOUNT CLIP, THE STAR HANGER MAKES IT POSSIBLE TO HANG MATERIALS THAT ARE NOT SUITABLE TO HANG WITH A SCREW INCLUDING MATERIALS SUCH AS ACRYLIC, STONE, CORIAN, LIGHT METAL PANELS, GLASS, AND OTHER SOLID SURFACE MATERIALS.

THE CLIPS WORK WITH VIRTUALLY ANY MATERIAL THAT WILL ACCEPT AN EPOXY.

THE STAR HANGER WITH THE ADHESIVE MOUNT ALSO WORKS FOR PANELS AS THIN AS 1/4".

PRODUCT ADVANTAGES

- STAR HANGER | WITH ADHESIVE MOUNTING PLATE
- FIRST PRODUCT DESIGNED TO DIRECTLY HANG SOLID SURFACES SUCH AS ACRYLIC, CORIAN, AND GLASS FLUSH WITH THE WALL.
 - ALLOWS THE INSTALLER TO RELY NOT ONLY ON TRADITIONAL SILICONE, BUT A COMBINATION OF SILICONE AND EPOXY MOUNTS.
 - QUICK AND EASY TO INSTALL – CORIAN PANELS TAKE APPROXIMATELY ONE HOUR PER FULL-SIZE SHEET.

STRENGTH TESTING

- WITH 1/2", SOLID SURFACE
- TENSILE FAILURE (HORIZONTAL PULL) = 250 LBS. / WORKING STRENGTH, PULL FROM FURRING = 25 LBS.
 - SHEAR FAILURE (VERTICAL WEIGHT HOLDING) = 350 LBS. / WORKING STRENGTH, WEIGHT HOLDING = 50 LBS.