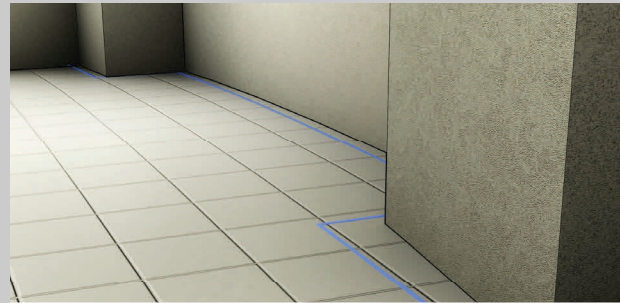




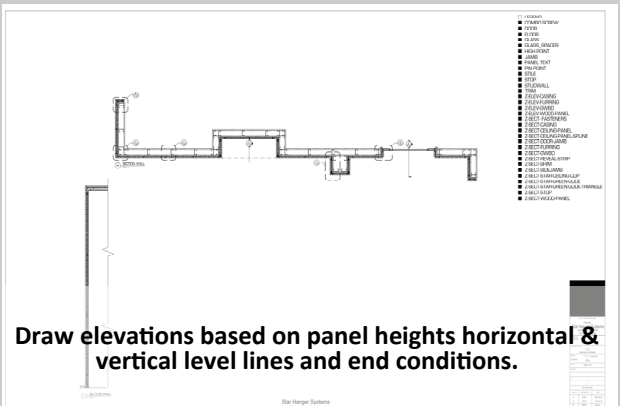
Find high point of floor, set horizontal bench mark 40" above bottom panel.



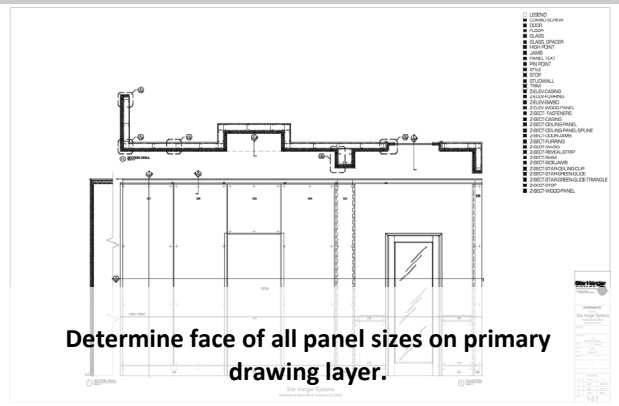
Determine greatest projection (Bump out in wall) to determine face of panel floor layout lines.



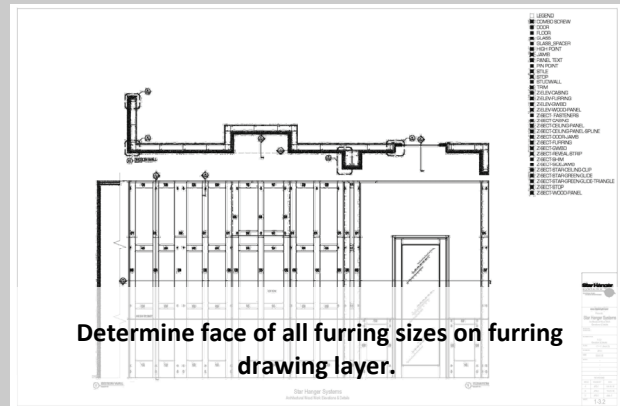
Determine panel widths based on horizontal lines and field alignment requirements.



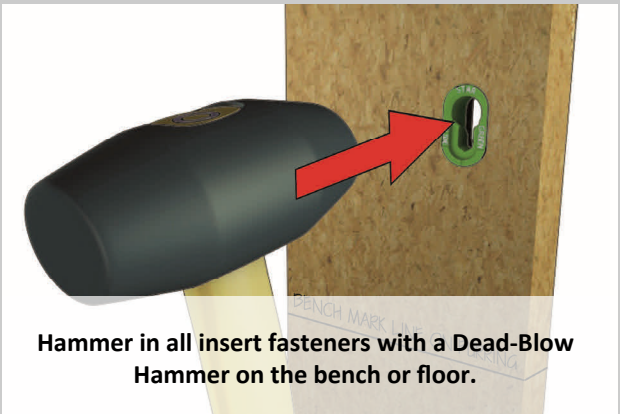
Draw elevations based on panel heights horizontal & vertical level lines and end conditions.



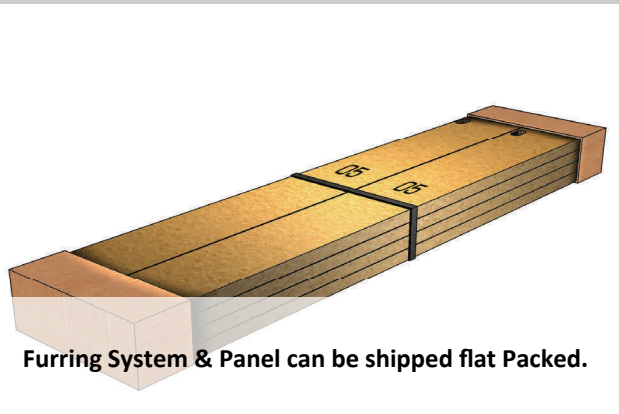
Determine face of all panel sizes on primary drawing layer.



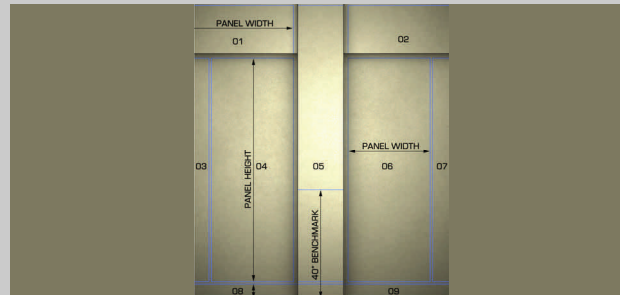
Determine face of all furring sizes on furring drawing layer.



Hammer in all insert fasteners with a Dead-Blow Hammer on the bench or floor.



Furring System & Panel can be shipped flat Packed.



Starting installation; re-verify all required site dimensions based on field horizontal & vertical level lines.

