

Star Hanger SYSTEMS

"Hidden Fastener Specialists" | www.starhanger.com

225 GALAXY, DIRECT TO STEEL, TEMPLATE, ELEVATOR CAB, INSTALLATION GUIDE

1



Required Tools; Includes 224 Galaxy, 136 Mounting Screw, 5MM Drill Bit, 917 Spring Loaded Punch, 922 Vacuum Cup 8", Plastic Laminate, Contact Cement, Plant Cut Template

2



Our starting assumption is the steel elevator cab is reasonably level and square. If baseboard is required, the same hardware can be used for installation.

3



The 224 Galaxy can be plant installed, flush with the panels, allowing the panels can be shipped flat packed. The Cab Package should include layout template, precut reveals strips, contact spray.

4



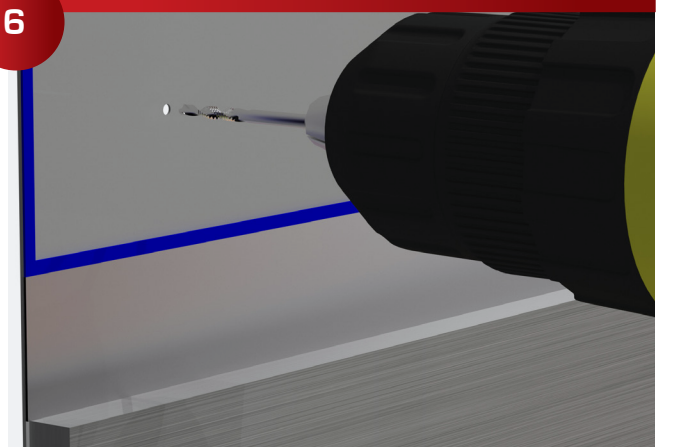
A plant prepared CNC cut layout template, including 916 Drill Collar and 516 Center Drill the centers for the mounting screws makes the field installation very quick. The template should also include the layout for the reveal strips.

5



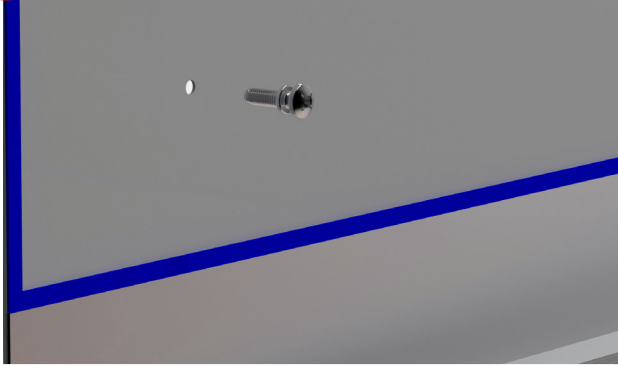
The 239 Machine screws can be quickly drilled with a 5/16" Center Drill.

6



The 239 Machine screws can be quickly drilled and tapped with 917 Drill & Tap combination, 10-24 Thread

7



Install the 239 Mounting Bolts, be careful not to over tighten the screw in the thin steel.

8



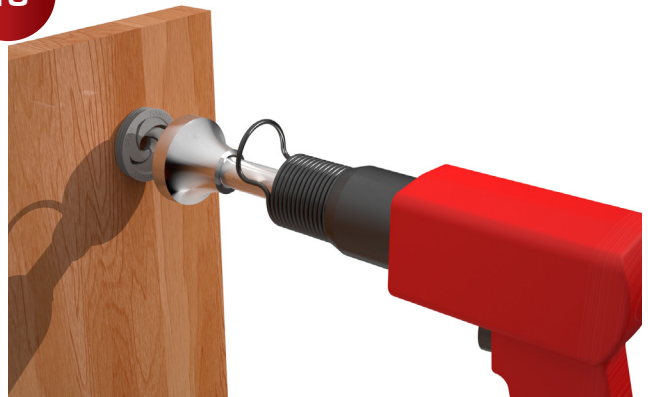
Install reveal strips between the layout lines using contact spray adhesive. The joints can be cut to length with laminate shears.

9



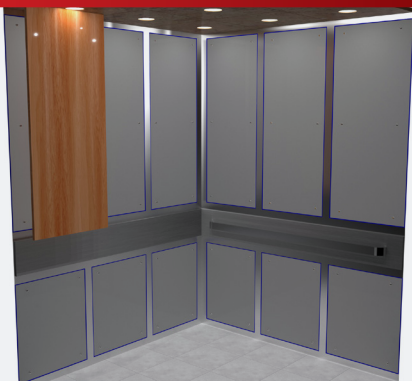
If needed the 224 Galaxy can be field installed with the same template. This uses the 916 Center Point Drill, 911 Carbide Tipped Drill, and a 1-1/4" Forstner Drill

10



The 225 Galaxy can be installed flush with a block of steel and hammer or a 965 Galaxy Hammer.

11



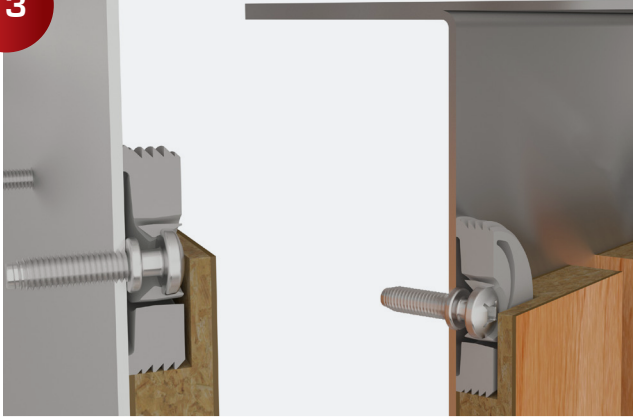
Install the panels and push them firmly into the mounting screw. There should be an audible click when the 224 Galaxy snaps into place.

12



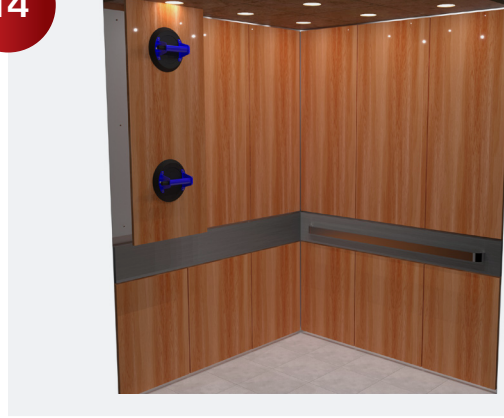
Finished Elevator Cab

13



225 Galaxy Detail showing, 239 Machine Screws, with a 10 – 24 Thread

14



The panels are permanently removable for maintenance. The Galaxies are not suitable for frequently used access panels.