

# Star Hanger SYSTEMS

"Hidden Fastener Specialists" | [www.starhanger.com](http://www.starhanger.com)

## 100 FIELD LAYOUT OF WALL PANELS, INSTALLATION GUIDE

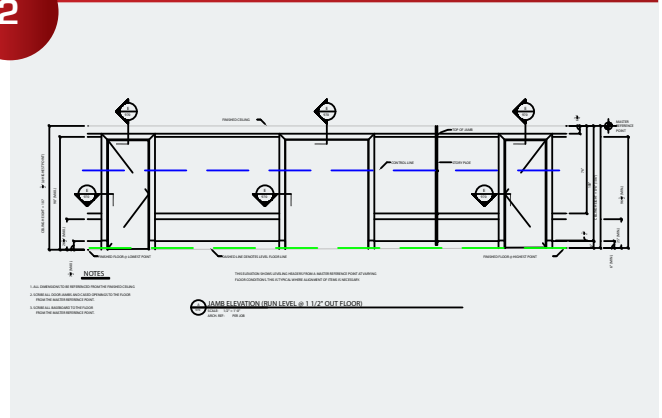
CONNECTS TO: WOOD | REVEALS: LAMINATE | INSERTION: DEAD BLOW | REMOVAL: VACUUM CUP

1



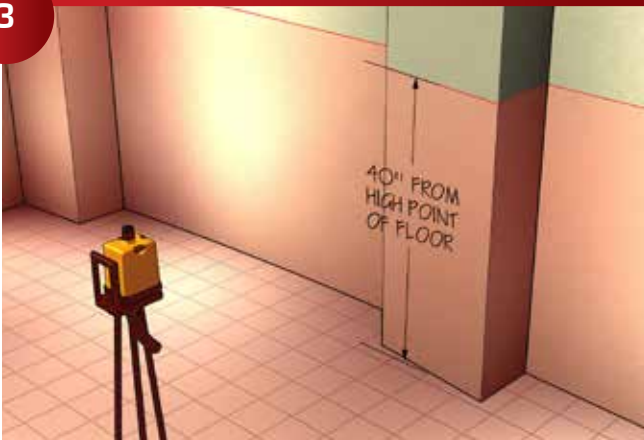
Required Tools.

2



Look around the project's site conditions and plans, you need to know what you are laying out and identify any changes from the plan.

3



Find high point of floor, check to see if the project has a pre-set horizontal bench mark. If not set your own horizontal bench mark.

4



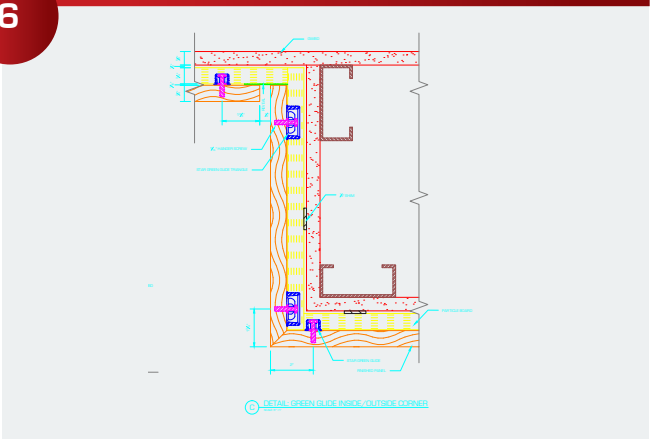
Determine greatest projection (bump out in wall). This will determine the face of the panels. Discuss the layout options with the GC. If there is a large bump you have two options, shim out most of your furring or have the projection corrected.

5



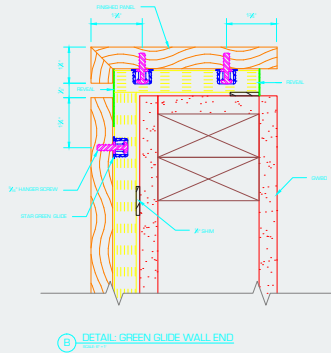
If the project is simple, shimming out the furring works well. If the panels have other constraints, you need to be very careful. There are many possible conflicts when furring out large areas, panel alignments, widths of door jambs, electrical build outs, held dimension, are just a few examples.

6



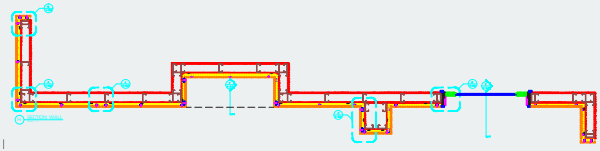
Review the section details for all the panel intersections (many can be downloaded from [starhanger.com](http://starhanger.com)). On large projects it works well to print out full scale inside corners, outside corners, door jambs and any other complex areas. Then simply spray adhesive the layout in

7



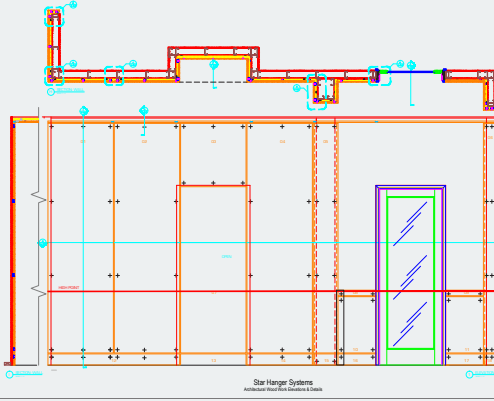
Determine panel widths based on horizontal lines and field alignment requirements.

8



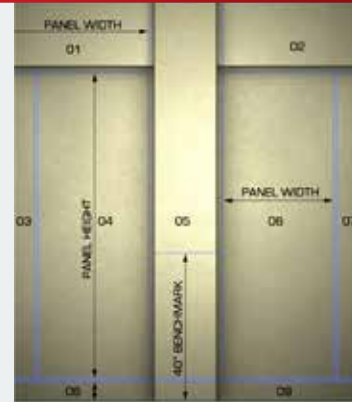
Field verify all required site dimensions based on face of panels for both field horizontal & vertical lines.

9



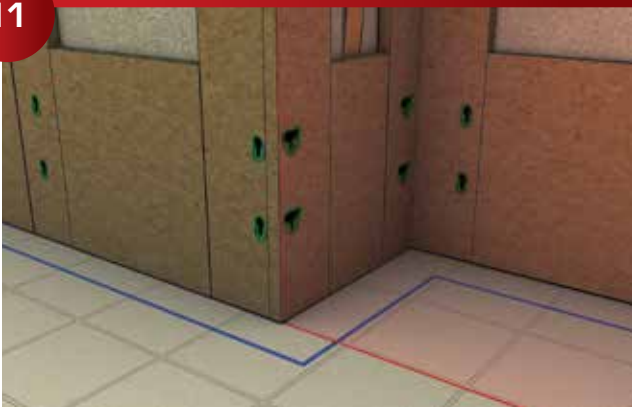
Revise elevations on the shop drawing based on panel heights horizontal & vertical level lines & end conditions. Determine face of all panel sizes on primary drawing layer.

10



Starting installation; re-verify all required site dimensions based on field horizontal & vertical level lines.

11



Start the installation of the furring systems, other Star Hanger Installation Guides may be helpful here.

### ENGINEERED FURRING

CONNECTS TO: Wood

REVEALS: Laminate

INSERTION: Dead Blow

REMOVAL: Vacuum Cup