

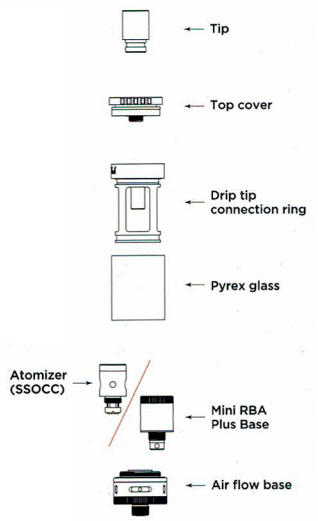


TOPTANK™ Mini

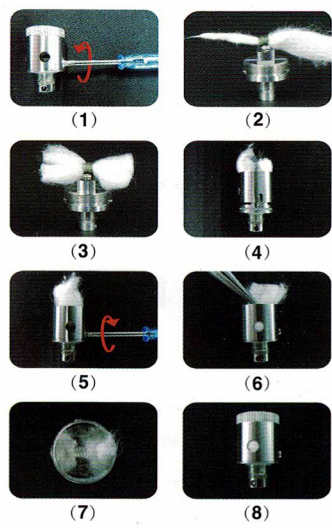
This kit include the TOPTANK Mini which is a topfill tank with 510 thread, use the SSOCC and RBA Mini Plus.

- Specification**
- TOPTANK Mini (Top fill tank)
 - Diameter: 22mm
 - Length: 45mm
 - Weight: 45g
 - Capacity: 4mL
 - Strengthen Pyrex glass
 - Enhance Air Flow Valve
 - Replaceable drip tips

SSOCC/RBA head Base installation



Wrapping Cotton steps (RBA)



Replacing coil

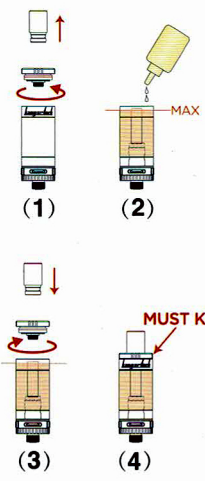
The atomizer unit is completely replaceable and designed for a period of life span. When flavor and/or vapor are reduced, it is time to change the atomizer. To replace the atomizer, remove the tank from the battery and turn the tank upside down, unscrew the air flow base and carefully set the tank aside. Unscrew the atomizer unit counterclockwise. Once disassembled, discard the used head and replace it with a new clean SSOCC head. Screw the new head clockwise into the air flow base. Fill the E-juice into the tanks, make sure the E-juice level should below the middle stem and ensure no E-juice split into it. Screw the air-flow base in clockwise back to the tank. You may now reconnect the tank to your battery (510 threads) and begin to vape.

Juice filling (Top fill)

Top filling
Place the TOPTANK Mini in vertical with drip tip on top. Unscrew the top cover anticlockwise. Fill the tank but ensure the E-juice below the middle stem and ensure no E-juice split into it. Otherwise Juice may split to mouth.

Caution

Make sure in top filling, once open the top cover, immediately fill the E-juice as fast as possible. Do not leave the top cover open or else the gravity force will push the juice down through the coil juice holes to the air flow base. Ensure the top cover is screw closed tight whenever juice inside the tank.



Adjusting the air flow:

- three level of air-flow setting.
- with stopper to keep adjusting valve in steady position.

Remarks

- TOPTANK Mini use 510 thread connection, customer need to choose suitable mod to match TOPTANK Mini.
- Customers are advised to use mod with safety precaution such as short-circuit or over load protection.
- Use 0.150ohm Ni coil in TC mode only.
- TOPTANK Mini can install the OCC,SSOCC and RBA Mini base.
- SSOCC head must not be "Dry Burn", user need to ensure the SSOCC head soak with E-Juice before firing (input power). For new SSOCC head, fill the E-juice into the TOPTANK Mini, wait for 30 seconds for the cotton to saturate with juice before firing.
- To disassemble/assemble the tank, get hold of the airflow base and tip connector only. Do not hold the Pyrex glass, this will break the glass and loose it from tip connector causing leakage.
- The information contained in this manual is subject to change without notice.

Warnings:

- Do not charge the device outdoors or near water.
- Do not use this device for anything other than vaping.
- Disassembling the device will void your warranty.
- Do not use any resistance wire other than those specified.
- Do not use the resistance wire in non temperature control mode.
- Do not swallow the e-liquid.
- Do not look into the drip tip when vaping to prevent juice spit in eyes.
- Do not use the device while driving.
- Do not dispose battery to fire or use it in extreme temperature.

10. This is not designed to be a smoking cessation device.

- Keep all components away from children and pets.
- Suitable range of using this kit in temperature 5-45 degree C.
- Use the provide tank and battery as a kit and do not separate to use other tank or battery.
- This device is intended for use by adults. It should not be used by children under the age of their local smoking or vaping laws, women who are pregnant, or those suffering from illness that could be worsened by the use of this product.
- If you have an adverse reaction in the use of this product, stop using it immediately and seek medical assistance.
- This device contains no user serviceable parts. It should be repaired by qualified personal only.
- Kanger takes no responsibility for damage to person or property through improper use of this product.
- Kanger will not warranty this product due to improper use or damaged caused by the user.