



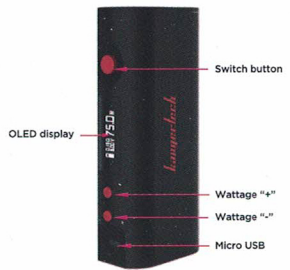
TOPBOX™ Mini

This kit include the TOPTANK Mini and KBOX Mini TC-75, which have 75 wattage output and with temperature control for most of the resistance wire in the market such as Nickel, Titanium, Stainless steel, Nichrome or Kanthal.

Specification

TOPTANK Mini (Top fill tank)
 Diameter: 22mm
 Length: 45mm
 Weight: 45g
 Capacity: 4mL
 Strengthen Pyrex glass
 Enhance Air Flow Valve
 Replaceable drip tips

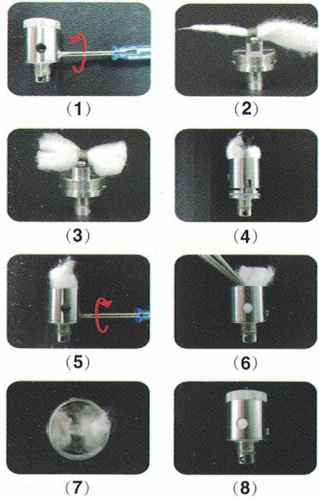
KBOX Mini TC-75 / KBOX Mini Platinum TC-75
 Length: 82 mm
 Diameter: 22 mm
 Weight:
 KBOX Mini TC-75: 110g (exclude 18650 cellule)
 KBOX Mini Platinum TC-75: 136g (exclude 18650 cellule)
 Output: 75W
 Coil resistance: Above 0.1 Ohm
 Coil type: Ni/Ti/SS/NiCr for Temperature control (Kanthal wire should read as NiCr in this device)
 Charging: micro USB
 Connection: Spring loaded 510
 Protection: Short circuit, over charge and over use protection



SSOCC/RBA head Base installation

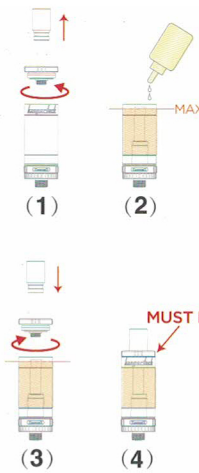


Wrapping Cotton steps (RBA)



Replacing coil

The atomizer unit is completely replaceable and designed for a period of life span. When flavor and/or vapor are reduced, it is time to change the atomizer. To replace the atomizer, remove the tank from the battery and turn the tank upside down, unscrew the air flow base and carefully set the tank aside. Unscrew the atomizer unit counterclockwise. Once disassembled, discard the used head and replace it with a new clean SSOCC head. Screw the new head clockwise into the air flow base. Fill the E-juice into the tanks, make sure the E-juice level should below the middle stem and ensure no E-juice split into it. Screw the air-flow base in clockwise back to the tank. You may now reconnect the tank to your battery (510 threads) and begin to vape.



Juice filling (Top fill)

Top filling
 Place the TOPTANK Mini in vertical with drip tip on top. Unscrew the top cover anticlockwise. Fill the tank but ensure the E-juice below the middle stem and ensure no E-juice split into it. Otherwise Juice may split to mouth.

Caution
 Make sure in top filling, once open the top cover, immediately fill the E-juice as fast as possible. Do not leave the top cover open or else the gravity force will push the juice down through the coil juice holes to the air flow base. Ensure the top cover is screw closed tight whenever juice inside the tank.



Adjusting the air flow:

1. three level of air-flow setting.
2. with stopper to keep adjusting valve in steady position.

OLED display:

NO.	Process	OLED display
1.	Install 18650 cell and press fire button 5 times within 2 second to switch on the battery.	Kanger Techc
2.	To select temperature control materials switch on the KBOX Mini TC - 75, press 3 successive click on fire button, to shift to another mode, just press 3 successive click on the fire button	600 Ni / Ti / SS / NC
3.	At corresponding Ni 200(pure Nickel), Ti (Titanium),SS (stainless steel) or NC (Nichrome) you can adjust desire temperature which best to fit yourself.	600 200
4.	In case to use Nichrome resistance wire, press up or down button to set full power wattage output.	750W
5.	To reverse the OLED display, switch on KBOX Mini TC - 75, press up/down button for 2 second together	750W MOSE
6.	When the battery is switch on, press fire button 5 times within 2 second	OFF
7.	In using Ni/Ti/SS/NC resistance wire once change the coil, KBOX Mini TC - 75 detect your coil value automatically	NEW VAPOR AUTHORITY
8.	When 18650 drain out	750W
9.	Short protection	750W
10.	Open circuit	750W
11.	Long time pressing	ON / OFF
12.	When the battery is switch on, press all the three button to lock the key button and vice versa	ON / OFF

Function	Explanation
Battery on / off	Choose your suitable coil resistance type which made of Ni Nickel 200, Ti Titanium, SS Stainless steel or NC Nichrome, it will run in temperature control mode. If you choose the full power mode, it is irrespective of coil temperature but follow your wattage setting.
To choose to resistance wire type, Ni, Ti, SS or NC (NC ≠ Kanthal)	At each TC mode, press up or down button to set the desire temperature of the coil achieve Temperature range from 100°C to 300°C and then 200°F to 600°F
Once set up the desire temperature KBOX Mini TC - 75 will cut off the output once the coil reach your preset temperature.	Once set up the desire temperature KBOX Mini TC - 75 will cut off the output once the coil reach your preset temperature.
Display the resistance value and wattage setting	At stand by mode, voltage + 0.00V. Once press the fire button, it will display corresponding voltage irrespective to coil temperature.
Temperature control off	There are only two options.
Choose the best OLED display for the left of right hand holding	For long period storage.
battery in off mode	This is to calibrate the coil resistance for Ni 200, Ti, SS, NC coil, make sure the coil in the room temperature (the environment you vaped) to ensure best temperature control.
use the up/down small button and to choose New coil, up button Old coil, down button	18650 cell indicator blank
18650 cell indicator blank	Some portion is short, check spring load connection or atomizer
-0.00Ω flash	Poor connection of spring load or atomizer worn out.
9.99Ω flash	This prevent accidental pressing the fire-button
Prevent over time firing	Fire button still can use, this prevent the accidental setting shift.
To disable the up / down small button	

Suggested setting procedure

1. fill the tank and install the 18650 cell.
2. 5 click to switch on the KBOX Mini TC-75.
3. press fire button 3 times, choose your resistance wire, Ni 200 , Ti, SS or Nichrome wire and set your desire coil temperature to fit your taste.
4. for power out mode using Nichrome wire, set your desire working wattage which best fit you.
5. choose OLED display orientation.
6. remember to lock the up/down button once you have best setting by pressing the entire button together.
7. in case you change the coil or vape in others environment of presetting, you may need to calibrate the KBOX Mini TC-75 as mentioned in step 7 of OLED display table for Ni200 or Ti temperature control mode.
8. Do not use Ni200 in full power wattage mode, this will melt Ni200.

Warnings:

1. Do not charge the device outdoors or near water.
2. Do not use this device for anything other than vaping.
3. Disassembling the device will void your warranty.
4. Do not use any resistance wire other than those specified.
5. Do not use the resistance wire in non temperature control mode.
6. Do not swallow the e-liquid.
7. Do not look into the drip tip; when vaping to prevent juice spit in eyes.
8. Do not use the device while driving.
9. Do not dispose battery to fire or use it in extreme temperature.
10. This is not designed to be a smoking cessation device.
11. Keep all components away from children and pets.
12. Suitable range of using this kit in temperature 5-45 degree C.
13. Use the provide tank and battery as a kit and do not separate to use other tank or battery.
14. This device is intended for use by adults. It should not be used by children under the age of their local smoking or vaping laws, women who are pregnant, or those suffering from illness that could be worsened by the use of this product.
15. If you have an adverse reaction in the use of this product, stop using it immediately and seek medical assistance.
16. This device contains no user serviceable parts. It should be repaired by qualified personal only.
17. Kanger takes no responsibility for damage to person or property through improper use of this product.
18. Kanger will not warranty this product due to improper use or damaged caused by the user.

Remarks

1. This package does not include the 18650 cell or charger.
2. Customer need to choose suitable 18650 cell and the corresponding charger. The cell output should be 30A or above.
3. Once the capacity indicator drop to minimum, the cell need to recharge.
4. TOPTANK Mini can install the OCC,SSOCC and RBA Mini base.
5. SSOCC head must not be "Dry Burn", user need to ensure the SSOCC head soak with E-Juice before firing (input power). For new SSOCC head, fill the E-juice into the TOPTANK Mini, wait for 30 seconds for the cotton to saturate with juice before firing.
6. To disassemble/assemble the tank, get hold of the airflow base and tip connector only. Do not hold the Pyrex glass, this will break the glass and loose it from tip connector causing leakage.
7. The information contained in this manual is subject to change without notice.