

SUBOX™ Mini-C

Packing

1. SUBTANK Mini-C x 1
2. KBOX Mini-c x 1
3. SSOCC SS 0.5 Ohm x 1
4. USB cable x 1
5. Manual x 1

SUBTANK Mini-C

Diameter: 22mm
 Length: 35.5mm (body)
 Weight: 39g
 Capacity: 3mL for SSOCC,
 Coil type: SSOCC Coils
 Connection: 510 thread
 Replaceable Pyrex glass
 Symmetric Air Flow holes

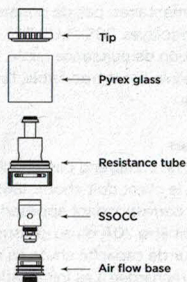
KBOX Mini-c

Height: 82mm
 Length: 39mm
 Width: 22mm
 Weight: 110g (exclude 18650 cell)
 Display: OLED
 Output wattage: 7W to 50W
 Coil resistance: 0.3 - 1.6 Ohm

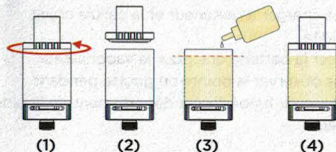
Charging: Micro-USB, DC5V/1A (Max)
 Connection: Spring loaded 510
 Protection: Short circuit, over charge and overuse protection

Abstract

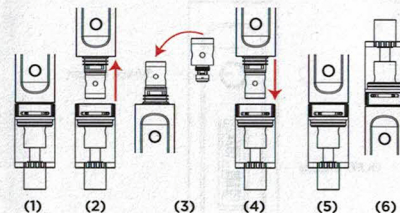
SUBTANK Mini-C atomizer can easily be changed without disassemble the tank.



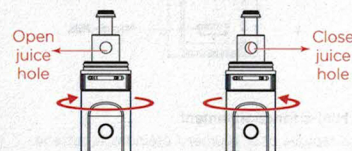
Juice filling



SSOCC head installation



Adjusting juice hole

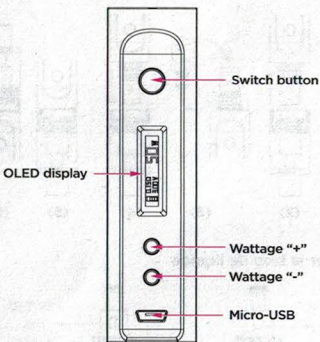


Remarks

SUBTANK Mini-C installs the SSOCC, and does not match with Mini RBA, RBA, OCC.

Caution

SSOCC must not be "Dry Burned", user needs to ensure the SSOCC is soaked with E-Juice before firing (input power). For new SSOCC head, fill the E-juice into the SUBTANK Mini-C, wait for 30 seconds for the cotton to saturate with juice before firing.



KBOX Mini-c operation

1. 5 speedy clicks to switch on/off the battery.
2. After switched on, OLED display "Kangertech" at standby mode.
3. Press button "+" or "-" to adjust the wattage output.
4. OLED displays the battery capacity level, resistance value and output voltage.
5. Press "+" and "-" to adjust the orientation of display.
6. Plug in the micro USB cord to charge the cell, OLED will display the charging state.
7. User can vape and charge the battery simultaneously.

Protection

1. Short circuit protection, OLED flashes and displays "0.0 Ohm"
2. Atomizer open circuit, OLED flashes and displays "9.9 Ohm"
3. PCB over temperature protection, and battery stops functioning and OLED displays "Temp High"
4. 10 seconds overtime usage protection, no power output and OLED displays "IOS OVER"
5. Low power protection, when the Li cell capacity is too low, cell indicator will flash.

Remarks

This package does not include the 18650 cell or charger, customer needs to choose suitable 18650 cell and the corresponding charger. The cell output should be 20A or above. Once the capacity indicator drop to the minimum, the cell needs to be recharged. The information contained in this manual is subject to change without notice.

Warnings:

1. Do not charge the device outdoors or near water.
2. Do not use this device for anything other than vaping.
3. Disassemble the device will invalidate your warranty.
4. Do not use any resistance wire other than what is specified.
5. Do not use the resistance wire in non temperature control mode.

6. Do not swallow the e-liquid.
7. Do not look into the drip tip while vaping to prevent juice from spitting in your eyes.
8. Do not use the device while driving.
9. Do not dispose battery to fire or use it in extreme temperature.
10. This is not designed to be a smoking cessation device.
11. Keep all components away from children and pets.
12. Suitable temperature range of using this kit is 5-45 degree C.
13. Use the provided tank and battery as a kit and do not separate to use with other tank or battery.
14. This device is designed for adults. It should not be used by children under the age of their local smoking or vaping laws, women who are pregnant, or those suffering from illness that could be worsened by the use of this product.
15. If you have an adverse reaction in the use of this product, stop using it immediately and seek medical assistance.
16. This device contains no user serviceable parts. It should be repaired by qualified personal only.
17. KangerTech takes no responsibility for damage to person or property through improper use of this product.
18. KangerTech will not warrant this product due to improper use or damaged caused by the user.