

## PROTANK 4

### Packing

- 1 x Protank 4
- 1 x SSOCC 0.5Ω ( Ceramic coil direct lung inhale )
- 1 x SSOCC 1.5Ω ( Nichrome mouth to lung inhale )
- 1 x PRO RBA 0.3Ω ( Clapton coil 2 pieces 0.6Ω in parallel )
- 1 x RBA accessory pack
- 1 x Manual

### Features

- Diameter: 22mm
- Length: 65.5mm
- Weight: 65g
- Capacity: 5.0mL for SSOCC  
4.0mL for PRO RBA
- Pyrex glass (not replaceable)
- Adjustable air flow drip tip
- Symmetric Air Flow Valve
- 510 thread with gold plated connection pin
- Top and side filling

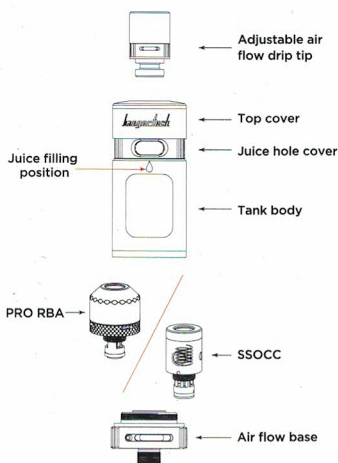
### Major materials used

Stainless steel (SUS 304)

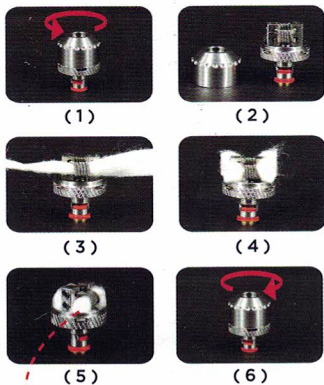
### Abstract

Protank 4 is integrated with the adjustable air flow drip tip, MTL, DL coil that best for the vaping experience. It comes with a PRO RBA for DIY, a new design of top side filling for maximum juice capacity.

### SSOCC head / PRO RBA Base installation



### Wrapping Cotton steps (PRO RBA)



### Replacing the SSOCC

The atomizer (SSOCC) unit is completely replaceable and designed with a period of life span. When flavor and/or vapor weakened, it is time to change the atomizer. To replace SSOCC, remove the tank from the battery and turn the tank upside down, unscrew the air flow base and carefully put the tank aside. Unscrew the SSOCC unit counterclockwise from the air flow base. Once disassembled, discard the used SSOCC and replace it with a new one. Screw the new SSOCC clockwise onto the air flow base.

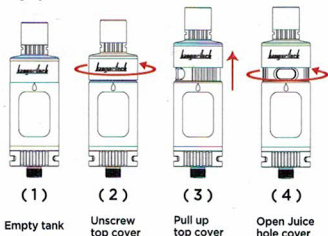
### Change to PRO RBA

User can easily change to PRO RBA mode by just installing the PRO RBA into the Protank 4, process please refer to "Replacing the SSOCC".

### Adjusting the air flow:

Both the drip tip and air flow base are using "slide adjustment" for setting intake air flow.

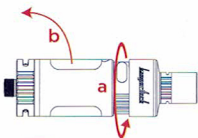
### Filling E-juice



(1) Empty tank (2) Unscrew top cover (3) Pull up top cover (4) Open Juice hole cover



(5) Ensure no excess filling



(6) IMPORTANT close juice hole before step (7)



(7) Push top cover toward tank body



(8) Screw top cover



(9) Filled tank

### Remarks

Protank 4 cannot install CLOCC. It uses OCC, SSOCC, PRO RBA, and Mini RBA only. This manual is subject to change without notice.

### Caution

SSOCC must not be "Dry Burned", user needs to ensure that the SSOCC is soaked with E-Juice before firing (input power). For new SSOCC head, while fill E-juice into the Protank 4, wait for 30 seconds for the cotton to saturate with juice before firing.

### Warnings:

1. Do not charge the device outdoors or near water.
2. Do not use this device for anything other than vaping.
3. Do not use any other brand coil except kangertech.
4. Do not use the Ni200 resistance wire in non-temperature control mode.
5. Do not swallow the e-liquid.
6. Do not look into the drip tip while vaping to prevent juice from spitting in your eyes.
7. Do not use the device while driving.
8. Do not dispose battery into fire or use it in extreme temperature.
9. This is not designed to be a smoking cessation device.
10. Keep all components away from children and pets.
11. Suitable range of using this kit is temperature 5-45 degree C.
12. This is designed for adults. It should not be used by children under the age of their local smoking or vaping laws, women who are pregnant, or those who suffering from illness that could be worsened by the use of this product.
13. If you have an adverse reaction in the use of this product, stop using it immediately and seek medical assistance.
14. This device doesn't contain user serviceable parts. It should be repaired by qualified person only.
15. Kanger takes no responsibility for damage to person or property through improper use of this product.