



## Specification:

Length: 58mm  
Width: 22.8mm  
Height: 86mm  
Battery weight: 154g  
Suitable battery: 18650 lithium battery  
capacity: 10mL

## Product feature:

Material: zinc alloy and aluminum alloy  
Drip tip: POM black (can exchange)  
Display: LCD display  
Coil: Mini RBA Plus & SSOCC (Ni-Cr/Ni200) & OCC

## function:

Output power: 7-60W  
Output voltage: 9V (max)  
MICRO USB charge port, input voltage DC 5V,  
charge Current: 1A  
Battery cell: 3.7V lithium battery, 18650 discharge over 30A.  
Resistance: Ni200, Ti 0.15-1.3Ω  
Nichrome 0.3Ω or above  
(above 1.3Ω, power cannot drive to 60W)

Temperature control from 100°C to 300°C and then 200°F to 600°F with achieve wattage range setting.

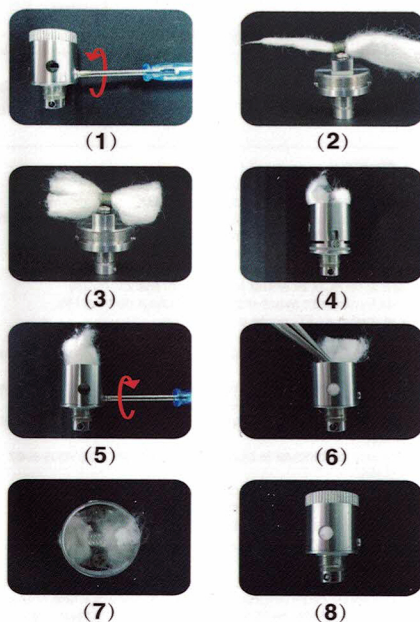


NEBOX™

## Assemble:



## Wrapping Cotton steps (Mini RBA Plus)



## LCD display:

NO.	Process	LCD Display	Function	Explanation
1.	Install 18650 cell and press fire button 5 times within 2 second to switch on the battery.	Kanger Tech	Battery on / off	
2.	To select temperature control material M1, M2 or full wattage output switch on the battery, press the fire button for 3 times within 2 second	M1: Ni200 M2: Ti M3: Ni200 M4: Ti M5: Ni200 M6: Ti	Press up/down button to vary mode setting, press fire button to select	Choose your suitable coil resistance which made of, such as Ni200 or Ti. In M3 mode, the output is irrespective of coil temperature but follow your wattage setting.
3.	At M1 or M2 mode. Press up/down button together to shift between setting coil temperature and the output wattage.	50.0W 300V 0.18Ω 600°F 300V 0.18Ω	If select temperature, press up/down button to set the desire temperature while keeping the wattage no change, and vice versa. Temperature range from 100°C to 300°C and then 200°F to 600°F	Once set up the desire temperature, NEBOX will cut off the output once the coil reach your preset temperature, wattage setting in this case will speed up or slow down the achieving time.
4.	At M3 mode. Press up/down button to set working wattage and press fire button to select	50.0W 300V 0.18Ω	Temperature control off	Once set up for full wattage output, NEBOX will output the preset wattage when press the fire button which irrespective to the coil temperature.
5.	When NEBOX is on, press up/down for 2 second to select the preset catalogue. Press up/down button to shift between them and use fire button to select	M1: 200°F 7.00V M2: 600°F 50.0W M3: 100°C 7.00V M4: 300°C 50.0W	Select the preset value, press up/down button, press fire button to select	You may select 6 presetting value and easy shift whenever you like. M1 to M4 is presetting with Temperature control, M5 to M6 is presetting for wattage output.
6.	When NEBOX is off, press up/down for 2 second to select the preset mode. Press up/down button to shift between them and use fire button to select	M5: TOFF 7.00V M6: TOFF 50.0W	Press up/down button to adjust the value, press fire button to select	you may easy adjust the temperature and wattage here. M1 to M4 is setting for temperature control mode. M4 to M6 is for pure wattage output without temperature control.
7.	To reverse the LCD display, switch off the NEBOX, press up/down button for 2 second. This setting is at the end of preset mode. Choose the best orientation yourself	ABC ✓ ABC	Choose the best LCD display for the left or right hand holding NEBOX	There are only two option.
8.	When the battery is switch on, press fire button 5 times within 2 second	OFF	Battery in off mode	For long period storage
9.	When the battery is switch on, press all the three button to lock the key button and vice versa.		disable the up/down small button and this also disable 3 times fire button click to enter to resistance type setting mode.	Fire button still can use, this prevent the accidental setting shift
10.	To change the coil, switch on NEBOX, screw in the new SSOCC or RBA, press the fire button.	OLD LOAD: 7 NEW LOAD: 7	use the up/down small button and to choose, Old load: old coil and New load as new coil.	This is to calibrate the coil resistance for Ni 200 or Ti coil, make sure the coil in the room temperature (the environment you vape) to ensure best temperature control.

## Suggested setting procedure:

- (1). Fill the tank and install the 18650 cell
- (2). 5 click to switch on the NEBOX.
- (3). Press fire button 3 times, choose your resistance wire, Ni 200, Ti or pure wattage output.
- (4). For pure Ni 200 or Ti, pure wattage output, record the best setting to fit yourself.
- (5). Switches off the NEBOX and enters the presetting mode.
- (6). Enters the best 6 presetting value from M1 to M6.
- (7). Choose the best LCD display orientation.
- (8). Switch on the NEBOX
- (9). Press fire button 3 times, choose your resistance wire type, and choose your presetting value.
- (10). Press up/down button at the same time for 2 seconds and choose your presetting value.
- (11). You may then fine tune your preset value whatever you want.
- (12). Remember to lock the up/down button once you have best setting by pressing the entire button together.
- (13). In case you change the coil or vape in others environment of presetting, you need to calibrate the NEBOX as mentioned in step 10 of LCD display paragraph.

## Remarks:

This package does not include the 18650 cell or charger. Customer need to choose suitable 18650 cell, the cell should be discharge 30A or above. One battery cell indicator drop to minimum, it needs to recharge. The information contained in this manual is subject to change without notice.

## Caution:

SSOCC head must not be "Dry Burn", user need to ensure the SSOCC head soak with E-Juice before firing (input power). For new SSOCC head, fill the E-juice into the NEBOX, wait for 30 seconds for the cotton to saturate with juice before firing.

## Warning:

1. Do not charge the cell outdoors and keep away from water.
2. Do not use this kit for others purpose except only for vaping.
3. Do not try to disassemble the battery or else warranty will be invalid.
4. Do not use the resistance wire value others than specify.
5. Do not swallow the e-liquid.
6. Do not use this battery for others purpose except only for vaping
7. Do not look into the drip tip when vaping to prevent juice spit in eyes.
8. Do not touch or spill the nicotine liquid contained in the cartridge.
9. Do not use the electronic cigarette more frequently or for longer periods than conventional cigarettes. The electronic cigarette is not a smoking cessation device.
10. Keep all components away from children and pets.
11. This product is intended for use by adults and not by child, women who are pregnant or person having disease or sick which may affect by this product.
12. For people with adverse reaction after using this product, it is recommended to use the Juice with lower nicotine content or no nicotine.
13. Customers need to choose the suitable cell which has safety protection.
14. Improper use of this product may take own risk.
15. We will not guarantee products that have been damaged through improper use or intentional damage