

Juppi™ KIT



KangerTech®

- Packing**
- 1 x JUPPI Tank
 - 1 x JUPPI BOX
 - 1 x Juppi coil
 - 1 x Juppi coil wire
 - 1 x Micro USB Cable
 - 1 x Manual

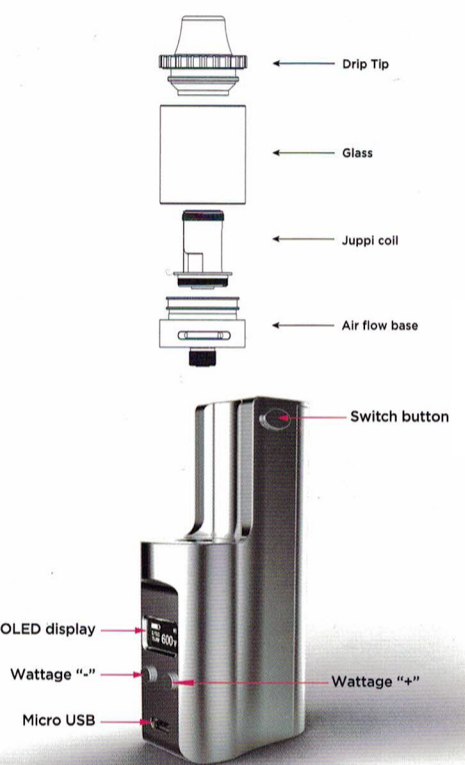
- JUPPI TANK Specification**
- Diameter: 22mm
 - Length: 35mm (body only)
 - Weight: 32.5g
 - Capacity: 3mL
 - Connection: 510 thread
 - Drip tip: POM
 - Resistance: 0.2 - 0.25 Ohm (Juppi coil)
 - Replaceable Pyrex glass
 - Symmetric Air Flow

- Juppi Box specification**
- Height: 85mm
 - Length: 48mm
 - Width: 22mm
 - Weight: 135g

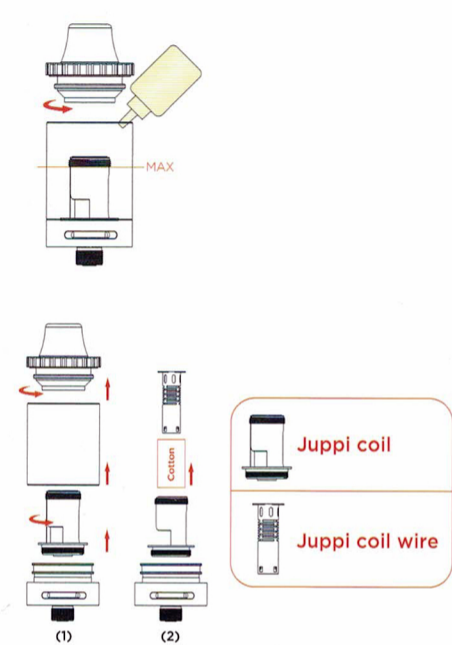
- Juppi Box feature**
- Material: Stainless Steel
 - Color: Black/White/Silver
 - Connection: Spring loaded 510
 - Output: 7-75W
 - Resistance: 0.1 - 2.5Ohm
 - Charging: Micro USB charge port, DC 5V/1000mAh(max)

Abstract
Juppi tank use the replaceable coil and end user may rewick the coil either.

Diagram



Juppi coil head installing and rewicking



- Change coil**
(1). Replacement Juppi coil
(2). Replacement Juppi coil wire (DIY)

OLED display:

NO.	Process	OLED Display	Function	Explanation
1.	When battery is switched off, press fire button 5 times within 2 seconds to switch on the battery.	Kanger Tech	Battery on / off	
2.	To select temperature control materials, switch on the JUPPI BOX, press 3 successive clicks on fire button, to shift to another mode, just press another 3 successive clicks.	500°F 0.150 75.0W Ni 0.150 75.0W Ti 500°F 0.150 75.0W SS316L 0.150 75.0W NC	Sequence of temperature control wire type: Ni: Pure Nickel Ti: Titanium SS316L: Stainless steel NC: Nichrome	Choose your preferred coil resistance type, which contains Ni: Nickel 200, Ti: Titanium, SS316L: Stainless steel and NC: NiChrome. Once coil wire is chosen, it will run in temperature control mode with the pre-set temperature value. It is reminded that user must choose the right coil wire and in corresponding mode for proper function.
3.	At temperature control of Ni 200 (pure Nickel), Ti (Titanium), SS316L (Stainless steel), NC(Nichrome) or you can adjust desired temperature.	500°F 0.150 75.0W Ni	For example of Ni mode, press up (+) or down (-) button to set the desired temperature of the coil. Temperature range from 100°C to 300°C and then 200°F to 600°F	Once set up the desired temperature, JUPPI BOX mod will cut off the output if the coil reaches your preset temperature
4.	Apart from the 4 temperature control modes, the final mode is full power wattage output, this is the last setting behind the temperature control selection of NC mode.	75.0w 0.490 0.00V	Temperature control off	Display the resistance value and wattage setting. At standby mode, voltage = 0.00V. Once press the fire button, it will display corresponding voltage irrespective of coil temperature.
5.	To reverse the OLED display, switch on JUPPI BOX, press up and down button together for 2 seconds.	75.0w 0.50 0.00V	Choose the best OLED display for the left or right hand holding	There are only two options.
6.	When the battery is switched on, press fire button 5 times within 2 seconds.	OFF	Battery in off mode	For long period storage
7.	In using Ni/Ti/SS316L/NC resistance wire, once changing the coil, JUPPI BOX will detect your coil value automatically	ATOMIZER YES #/ NO-	Use the up or down small button and to choose New coil: up (+) button Old coil: down (-) button	This is to calibrate the coil resistance for Ni 200, Ti, SS316L or NC coil, make sure the coil in the room temperature (the environment you vape) for best temperature control.
8.	When 18650 drained out	Check Battery	Check Battery	18650 cell needs to recharge
9.	Short protection	Low Resistance	Low Resistance	Some portion is short, check spring loaded connection or atomizer
10.	Open circuit	Check Atomizer	Check Atomizer	Poor connection of spring load or atomizer worn-out.
11.	Long time pressing	10S Over	Prevent over time firing	This prevent accidental pressing on firebutton
12.	High Temperature protection	Temp High	Prevent over heating of control board	In case successive vaping causes the control board over heating, it will disappear once cooled down

Operation:

- 5 speedy clicks to switch on/off the battery.
- After switched on, OLED displays "Kanger Tech" at standby mode.
- Press fire button 3 times, choose resistance wire, Ni, Ti, SS316L, NC or pure wattage output.
- For pure Ni, Ti, NC or SS316L resistance wire, you can set your desired coil temperature to fit your taste.
- For power output mode, set your desired working wattage that best fits you.
- Cell reverse protection, no power output when cell reversely in stalled.
- Press (+) and (-) together to choose OLED display orientation.
- Press fire button, (+) and (-) together can lock the up and down button once you have best setting.
- In case you change the coil or vape in other environment of pre-setting, you may need to calibrate the atomizer as new coil: New Coil(+), Old Coil (-) for best performance.
- If no display of calibration:
 - Screw off the coil.
 - Press the fire button till OLED displays "Check Atomizer".
 - Screw back the atomizer and press fire button again.

Caution

Juppi coil must not be "Dry Burned", user needs to ensure the Juppi coil is soaked with E-Juice before firing (input power). For new Juppi coil, fill the E-juice into the Juppi, wait for 30 seconds for the cotton to saturate with juice before firing.
The information contained in this manual is subject to change without notice.

Warnings:

- Do not charge the device outdoors or near water.
- Do not use this device for anything other than vaping.
- Disassemble the device will invalidate your warranty.
- Do not swallow the e-liquid.
- Do not look into the drip tip while vaping to prevent juice spit in eyes.
- Do not use the device while driving.
- Do not dispose battery to fire or use it in extreme temperature.
- This is not designed to be a smoking cessation device.
- Keep all components away from children and pets.
- Suitable temperature in using is 5-45 degree.
- Use the provided tank and battery as a kit and do not use with other tank or battery separately.
- This device is designed for adults. It should not be used by children under the age of their local smoking or vaping laws, women who are pregnant, or those suffering from illness that could be worsened by the use of this product.
- Switch off the device when put into your pocket to prevent accidental firing.
- If you have an adverse reaction in the use of this product, stop using it immediately and seek medical assistance.
- This device contains no user serviceable parts. It should be repaired by qualified personal only.
- Kanger takes no responsibility for damage to person or property through improper use of this product.
- Kanger will not warrant this product due to improper use or damage caused by the user.
- KangerTech will not be responsible for any damages or injuries caused by using a substandard battery. End users must certify their batteries before plugging them into a KangerTech device.